






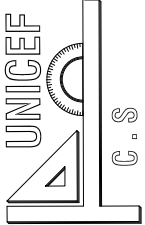
PROJECT NAME : Bala i Keran wa Munjan Secondary School
PROJECT EMPLOYER : UNITED NATIONS CHILDREN'S FUND
PREPARE BY : CONSTRUCTION SECTION

		PROJECT EMPLOYER	
		UNITED NATIONS CHILDREN'S FUND	
		construction section	
		Bala i Keran Wa Munjan Secondary School	
		All dimension are in cm	
TITLE :		SAYED HAFIZ SADAT	
DRAWING BY			
CHECKED BY			
APPROVED BY			
			
C . S			
SHEET No		1	
SCALE		AS SHOWN	
DATE		feb 2024	

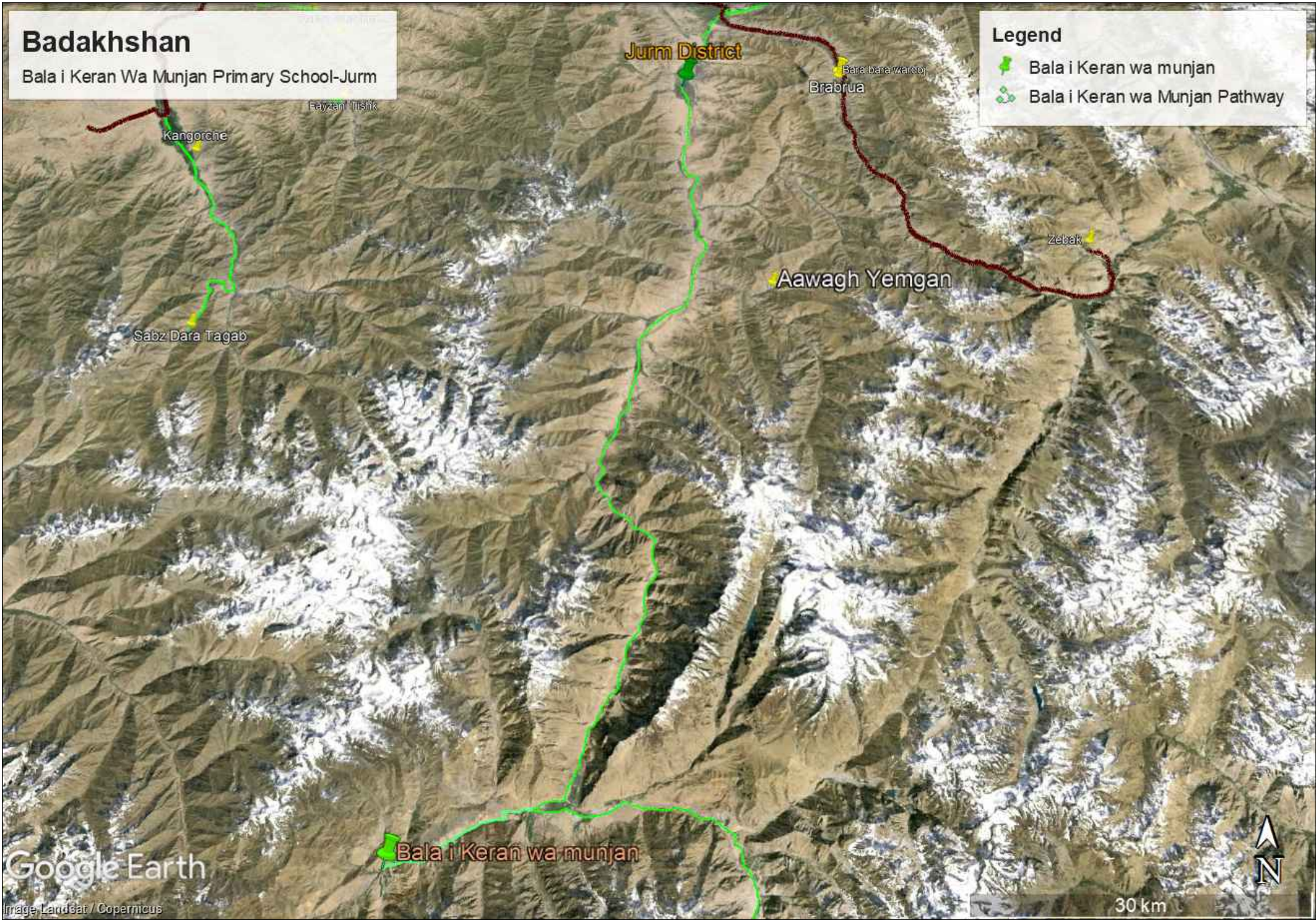
S.N	TABLE OF CONTENTS
A-1/8	TABLE OF CONTENT
A-2/8	GOOGLE MAP"ROAD MAP"
A-3/8	GOOGLE MAP"SITE LOCATION"
A-4/8	GENERAL SITE PLAN
A-5/8	EXISTING PLAN
A-6/8	PLANNED BOUNDARY WALL

	
PROJECT EMPLOYER	
UNITED NATIONS CHILDREN'S FUND	
construction section	
Bala i Keran Wa Munjan Secondary School	
All dimension are in cm	


TITLE :	
DRAWING BY	SAYED HAFIZ SADAT
CHECKED BY	
APPROVED BY	

	
SHEET No	2
SCALE	AS SHOWN
DATE	Jan. 2024

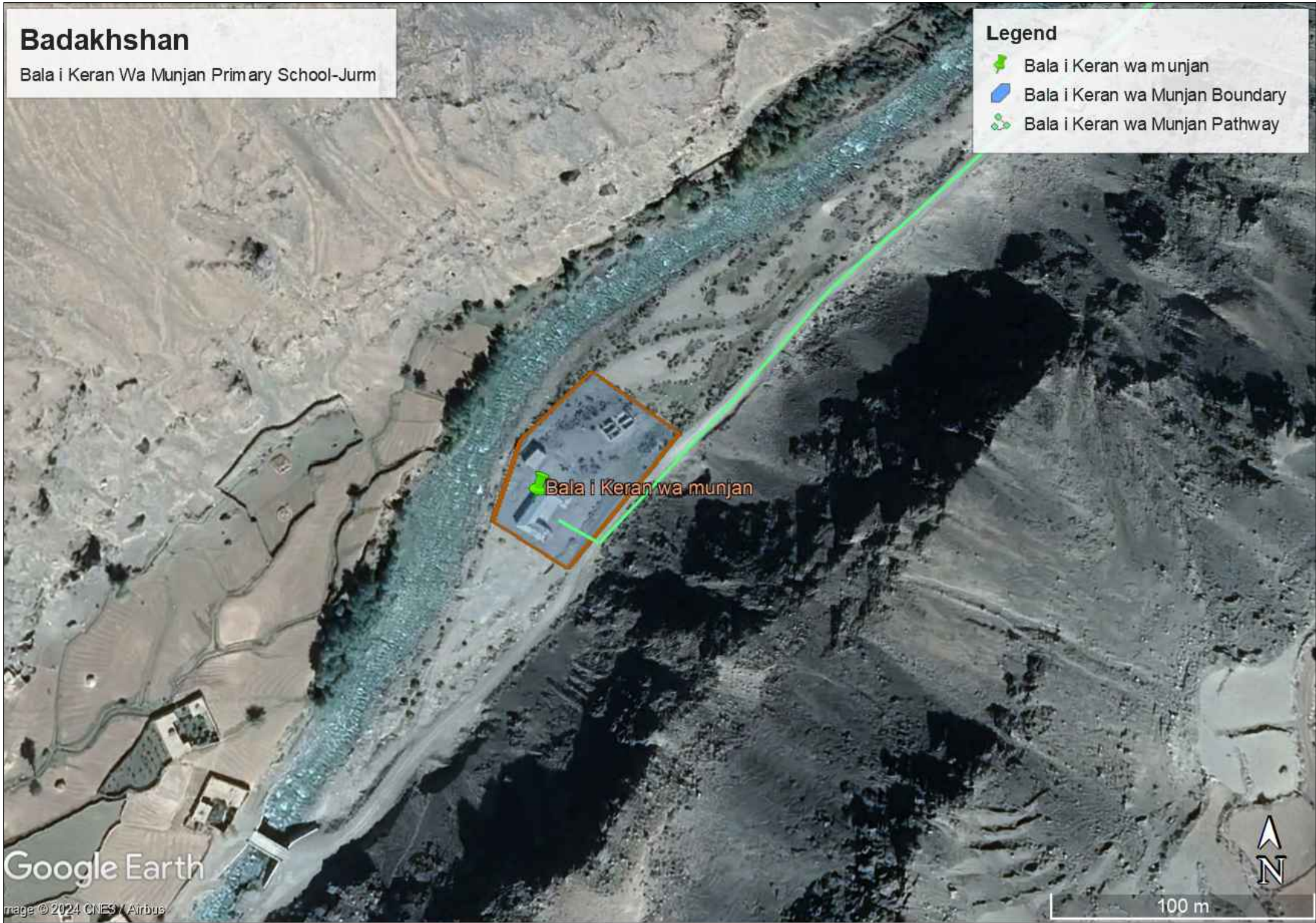
Bala i Keran Wa Munjan Secondary School




Pathway

	
PROJECT EMPLOYER	
UNITED NATIONS CHILDREN'S FUND	
construction section	
Bala i Keran Wa Munjan Secondary School	
All dimension are in cm	
TITLE :	
DRAWING BY	
SAYED HAFIZ SADAT	
CHECKED BY	
APPROVED BY	
UNICEF	
C.S	
SHEET No	
3	
SCALE	
AS SHOWN	
DATE	
Jan. 2024	

Bala i Keran Wa Munjan Secondary School



Pathway




PROJECT EMPLOYER
UNITED NATIONS CHILDREN'S FUND
construction section
Bala i Keran Wa Munjan Secondary School
All dimension are in cm

TITLE :

DRAWING BY
SAYED HAFIZ SADAT

CHECKED BY

APPROVED BY



C.S

SHEET No
1

SCALE
AS SHOWN

DATE
Jan. 2024

Bala i Keran Wa Munjan Secondary School

Mountains

River

75m

40m

Latrines

Old Classes

40m

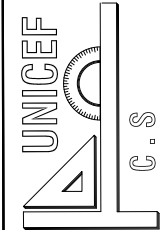
75m

Public Road

Public Road

Mountains

Site Plan



SCALE AS SHOWN

DATE Jan. 2024

SAYED HAFIZ SADAT

CHECKED BY

APPROVED BY

PROJECT EMPLOYER

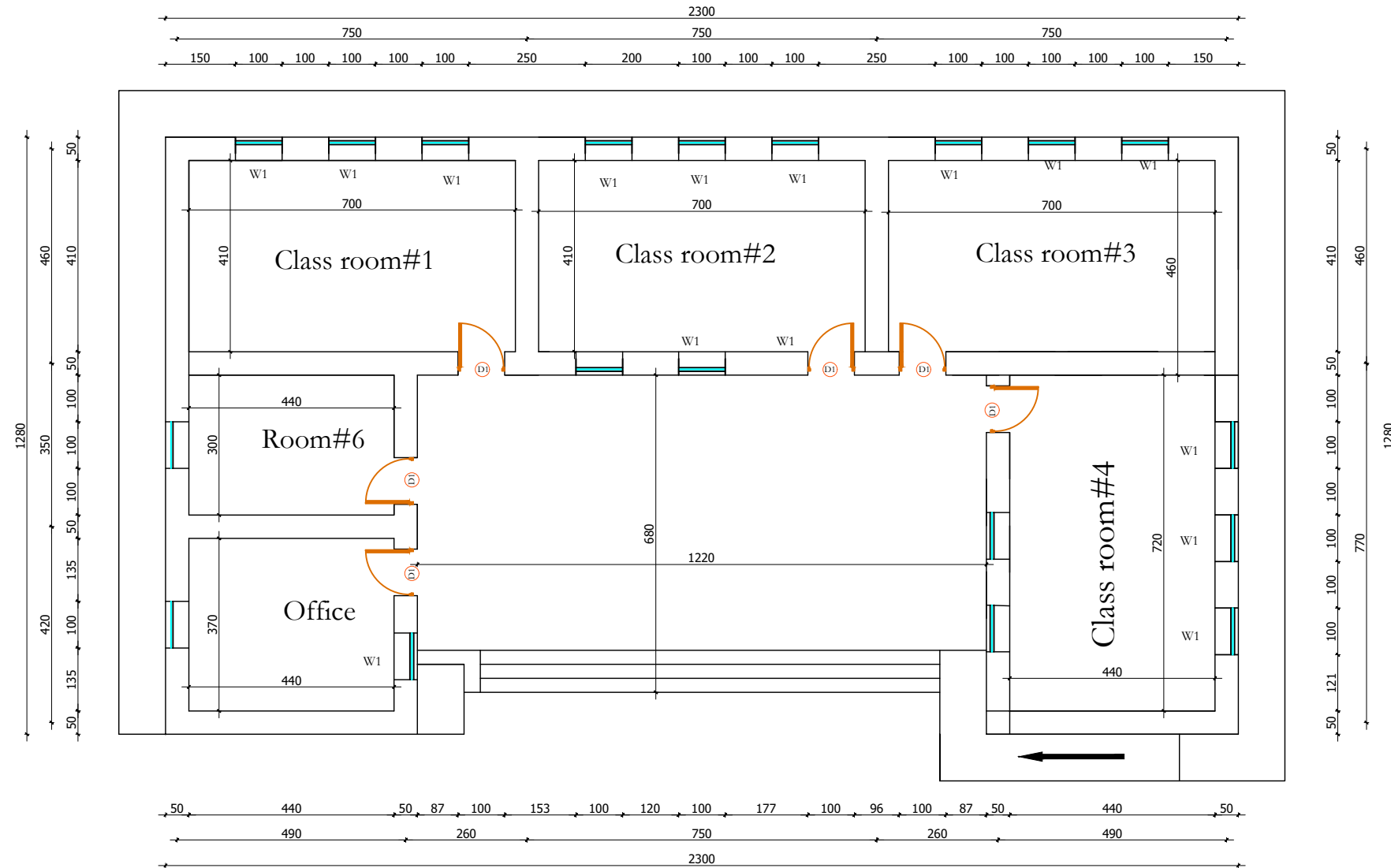
UNITED NATIONS CHILDREN'S FUND

construction section

Bala i Keran Wa Munjan Secondary School

All dimension are in cm

Existing Plan



D1	100 x270 cm
W1	120 x160 cm



UNICEF

C.S.

SHEET No

1

SCALE

AS SHOWN

DATE

Jan. 2024

TITLE :

DRAWING BY

SAYED HAFIZ SADAT

CHECKED BY

APPROVED BY


PROJECT EMPLOYER

UNITED NATIONS CHILDREN'S FUND

construction section

Bala i Keran Wa Munjan Secondary School

All dimension are in cm



Bala i Keran Wa Munjan Secondary School

The diagram is a site plan for the Bala i Keran Wa Munjan Secondary School. It features a large rectangular area defined by a 'Planned Boundary wall' with dimensions of 75m by 40m. Inside this boundary, there is an 'Existing Building' (labeled A) with a complex internal layout. To the right of the existing building are 'Latrines' and 'Old Classes'. A 'Planned Door' (labeled C) is located on the bottom-left corner of the boundary wall. A 'Planned Boundary wall L=195m' (labeled B) is shown as a dashed line extending from the bottom-right corner of the main boundary. A north arrow is located in the top right corner of the plan.

A	Existing Building
B	Planned Boudary wall L=195m
C	Planed Door

Planned Boundary wall