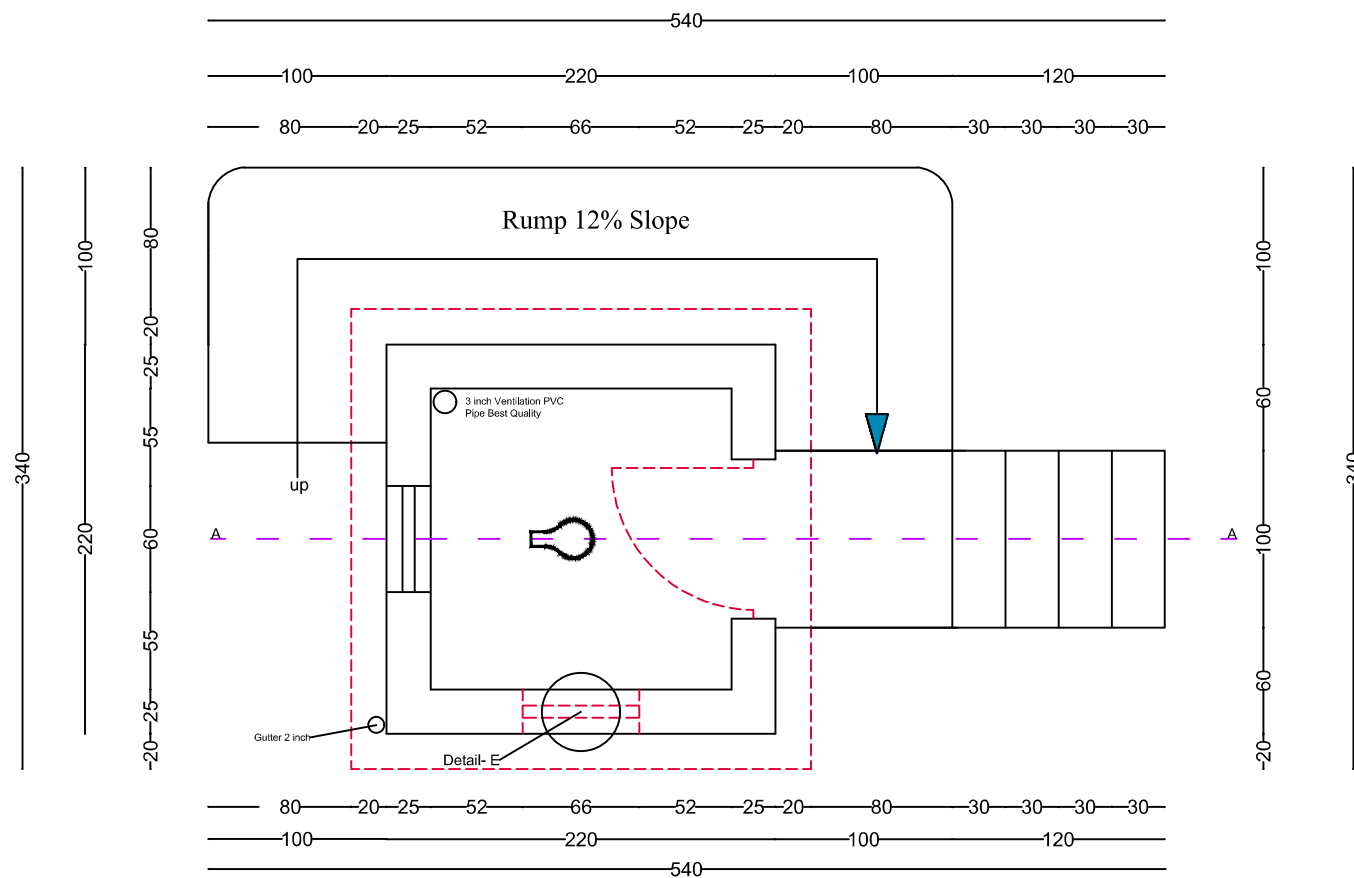
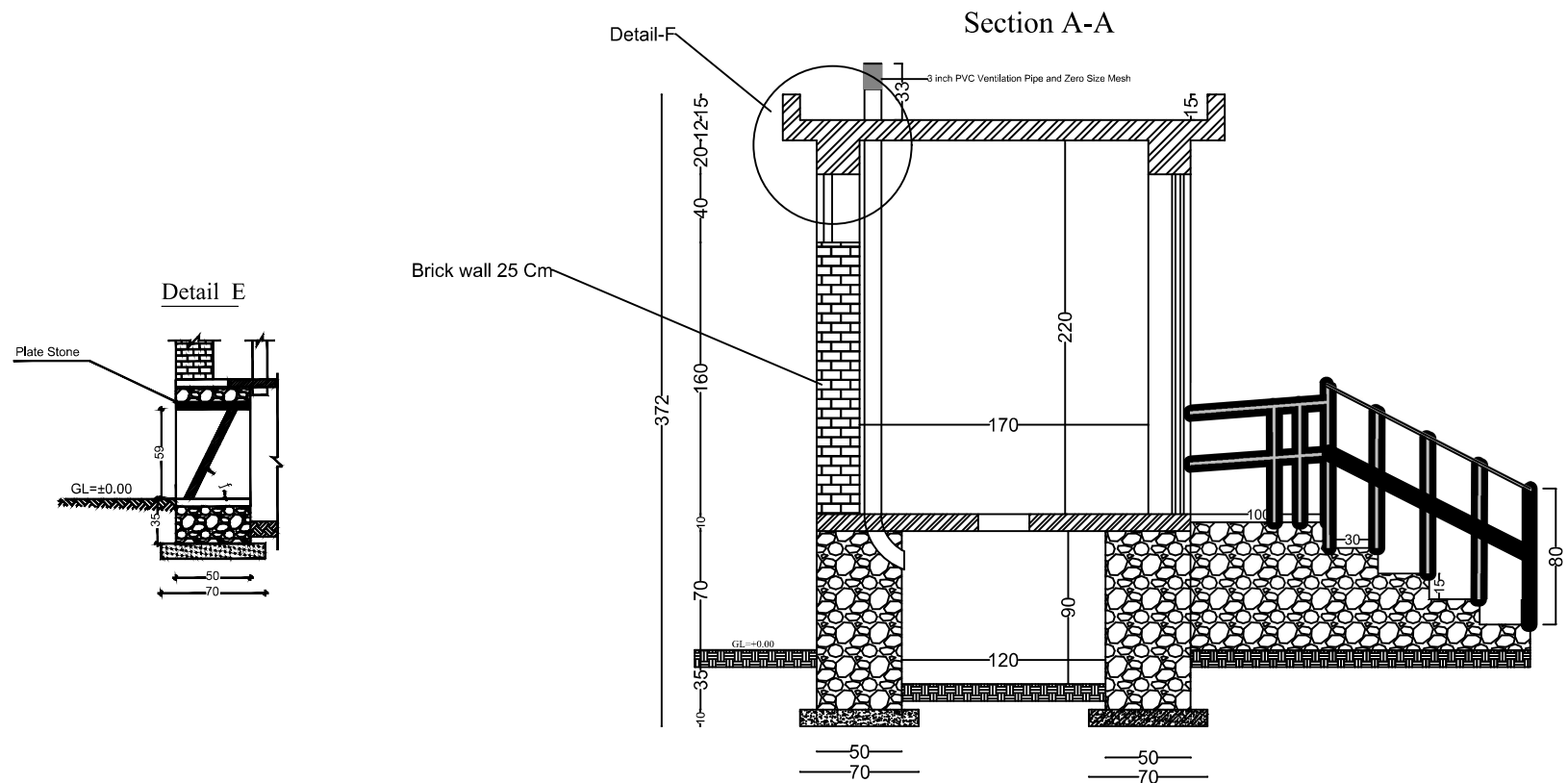


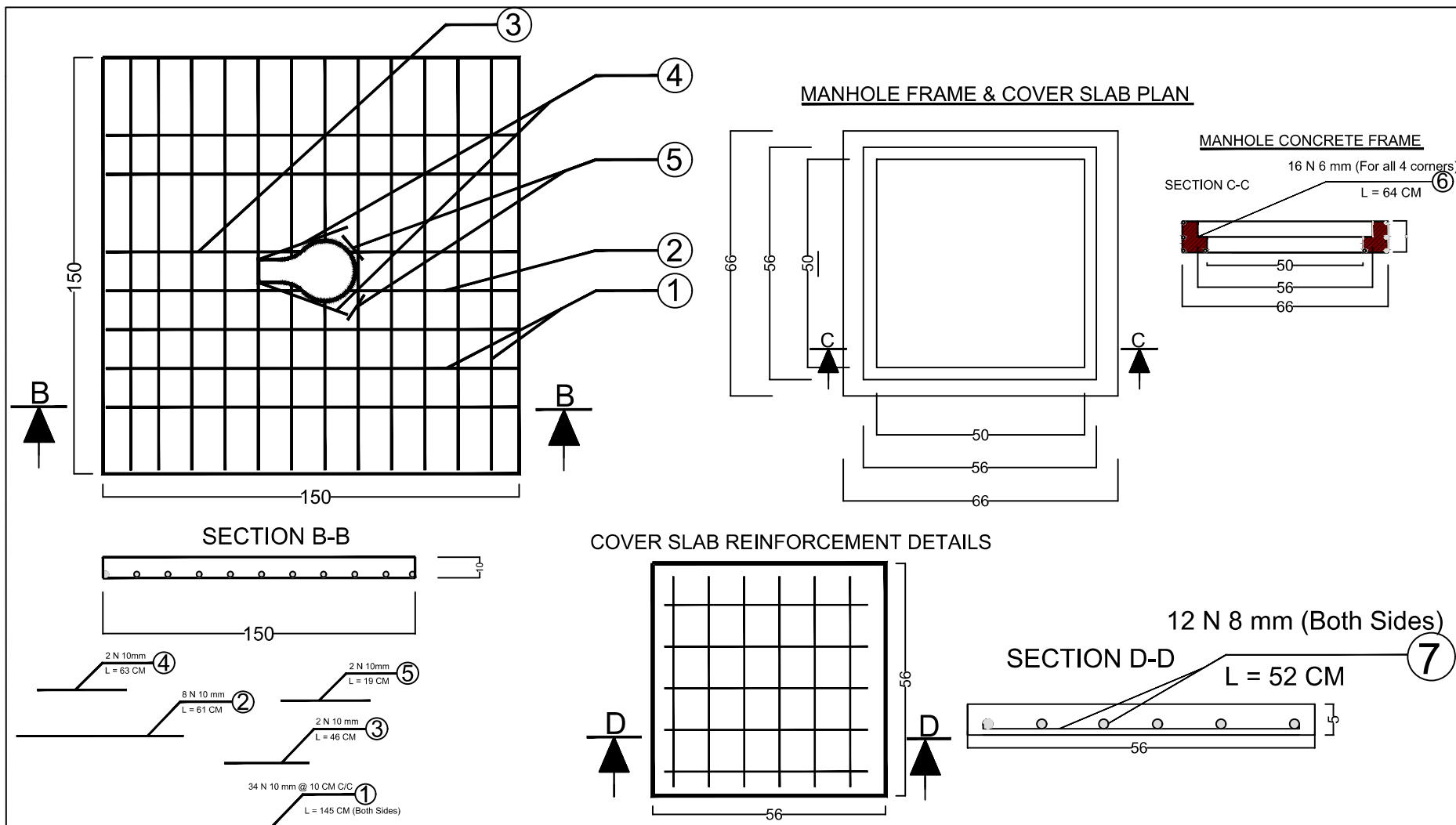
## Plan for Dry Latrine



	No	Surveyed by :	OAWCK Engineering Team	Organization for Afghan Women Capacity and Knowledge (OAWCK)	Scale:	N/A	Province:		Project name: WASH Initiative InLaghman, Jawzjan & Balkh Province
	1	Designed by:	OAWCK Engineering Team		Date:		Districts:	Proposed Districts	
	2	Drawn by:	OAWCK Engineering Team		Drawing No:		Villages	Concern Villages as per Contract	Drawing Title: Dry Latrine
	3	Approved by:	Haji M.Zaman Safi						

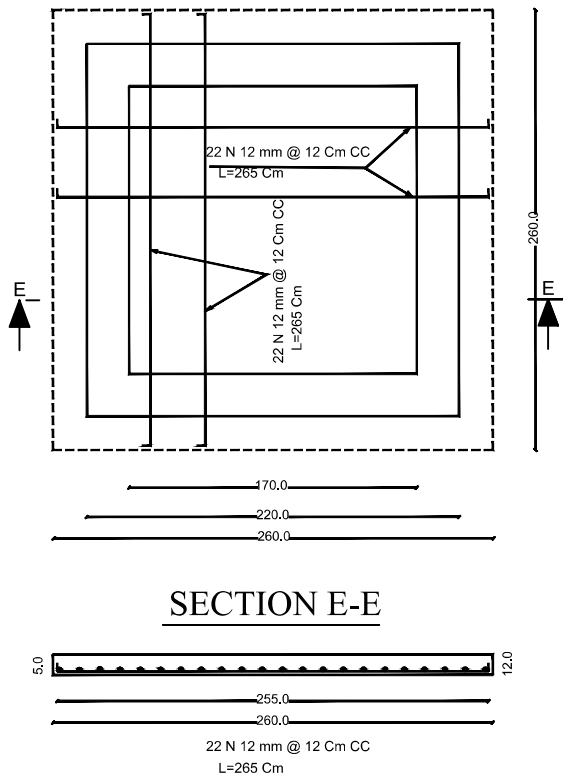


	No	Surveyed by :	OAWCK Engineering Team	Organization for Afghan Women Capacity and Knowledge (OAWCK)	Scale:	N/A	Province:		Project name: WASH Initiative InLaghman, Jawzjan & Balkh Province
	1	Designed by:	OAWCK Engineering Team		Date:		Districts:	Proposed Districts	
	2	Drawn by:	OAWCK Engineering Team		Drawing No:		Villages	Concern Villages as per Contract	Drawing Title: Dry Latrine
	3	Approved by:	Haji M.Zaman Safi						



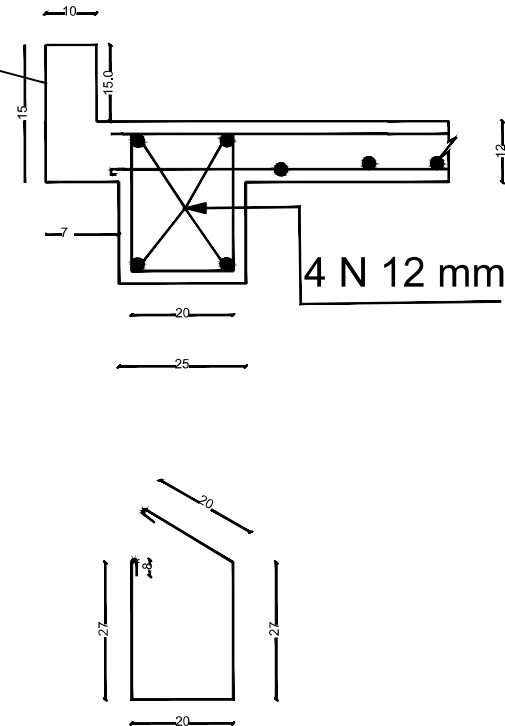
No	Surveyed by :	OAWCK Engineering Team	Organization for Afghan Women Capacity and Knowledge (OAWCK)	Scale:	N/A	Province:		Project name: WASH Initiative InLaghman, Jawzjan & Balkh Province
1	Designed by:	OAWCK Engineering Team		Date:		Districts:	Proposed Districts	
2	Drawn by:	OAWCK Engineering Team		Drawing No:		Villages:	Concern Villages as per Contract	Drawing Title: Dry Latrine
3	Approved by:	Haji M.Zaman Safi						

## Plan of Slab



## Detail F-F M 1:25

### Brick Masonry Parapet Wall



Note:

- 1: all Damnation by Centimeter
- 2: Brick: Shall be obtained from an approved source and of uniform color, size (7\*11\*22) cm, and shape. Bricks shall have smooth rectangular faces with sharp straight, right-angle edges. Maximum absorption shall not be more than 20 of its dry weight on immersion in water for 24 hours. Minimum crushing strength shall be 75 kgcm2ma .
- 3: Reinforcement:: Steel reinforcement ( Tashkent or khan Steel ) Shall be the correct diameter ,as shown on the Drawings
- 4: Mark of concretemortar for stone masonry M-120
- 5: Installation of Window (60cm X 40cm)
- 6: Installation 3" PVC normal type pipe for ventilation
- 7: Installation urine 2" GL pipe
- 8: Metallic door (200\*90) cm best quality
- 9: Gravel : The gravel used for every concrete part must be crashed, cleaned and have 10 to 25 mm diameter.
- 10: PCC for covering the floor for seating place (thick 10cm).
- 11: Mark of PCC concrete is (M-150).
- 12: Paint two layer Weather Sheet 100 according to the OAWCK Engineer Advice

No	Surveyed by :	OAWCK Engineering Team			Organization for Afghan Woman Capacity and Knowledge (OAWCK)	Scale:		Province:		Project name: WASH Initiative InLaghman, Jawzjan & Balkh Province
1	Designed by:	OAWCK Engineering Team				Date:		Districts:	Proposed Districts	
2	Drawn by:	OAWCK Engineering Team				Drawing No:		Villages:	Concern Villages as per Contract	Drawing Title: Dry Latrine
3	Approved by:	Haji M.Zaman Safi								