

Point Table				
Point #	Elevation	Latitude	Longitude	Description
1	2385	N 3827615	E 716035	RESERVOIR
2	2346	N 3827040	E 716184	Water point (well)



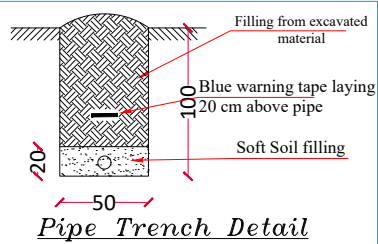
All dimension in cm otherwise stated

LEGEND

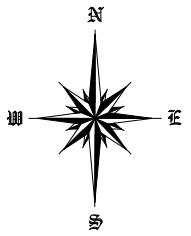
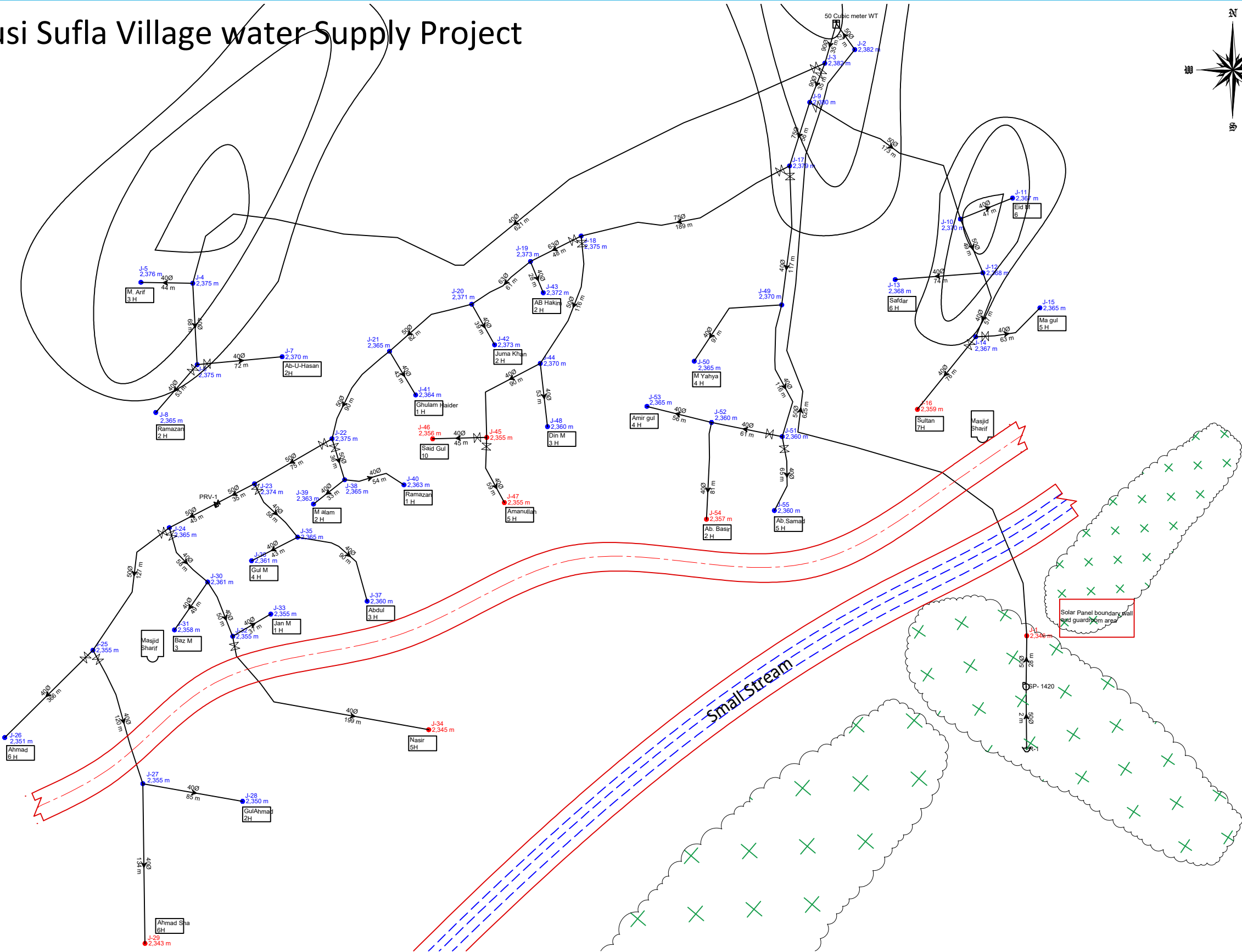
Propessed Well	
Maine line	
Distribution Line	
Reservoir Area	
Tertiary Road	
Village houses	
Agricultural Land	
Mosque	
Hill	
Control Valve	

Point Table				
Point #	Elevation	Latitude	Longitude	Description
1	2385	N 3827615	E 716035	RESERVOIR
2	2346	N 3827040	E 716184	WELL

Note:
Type of soil :#2 to #4
Population : 1803
House Number: 103 Houses , 2 Mosque,
Static water level :8m
Dynamic water level:25 m
Total depth :30m
Drilling type :Percussion 18".
As per existing dug wells observation and
community information, the groundwater
under 35 meters has salt, so we selected
deep for well 30 meters.



Qudusi Sufla Village water Supply Project



Islamic Relief Worldwide-SIDA
Food Security, WASH, and protection support to vulnerable families in Ghor- Afghanistan

Department WASH
Drawing Title Final Site Plan

All dimension in (m)
otherwise stated

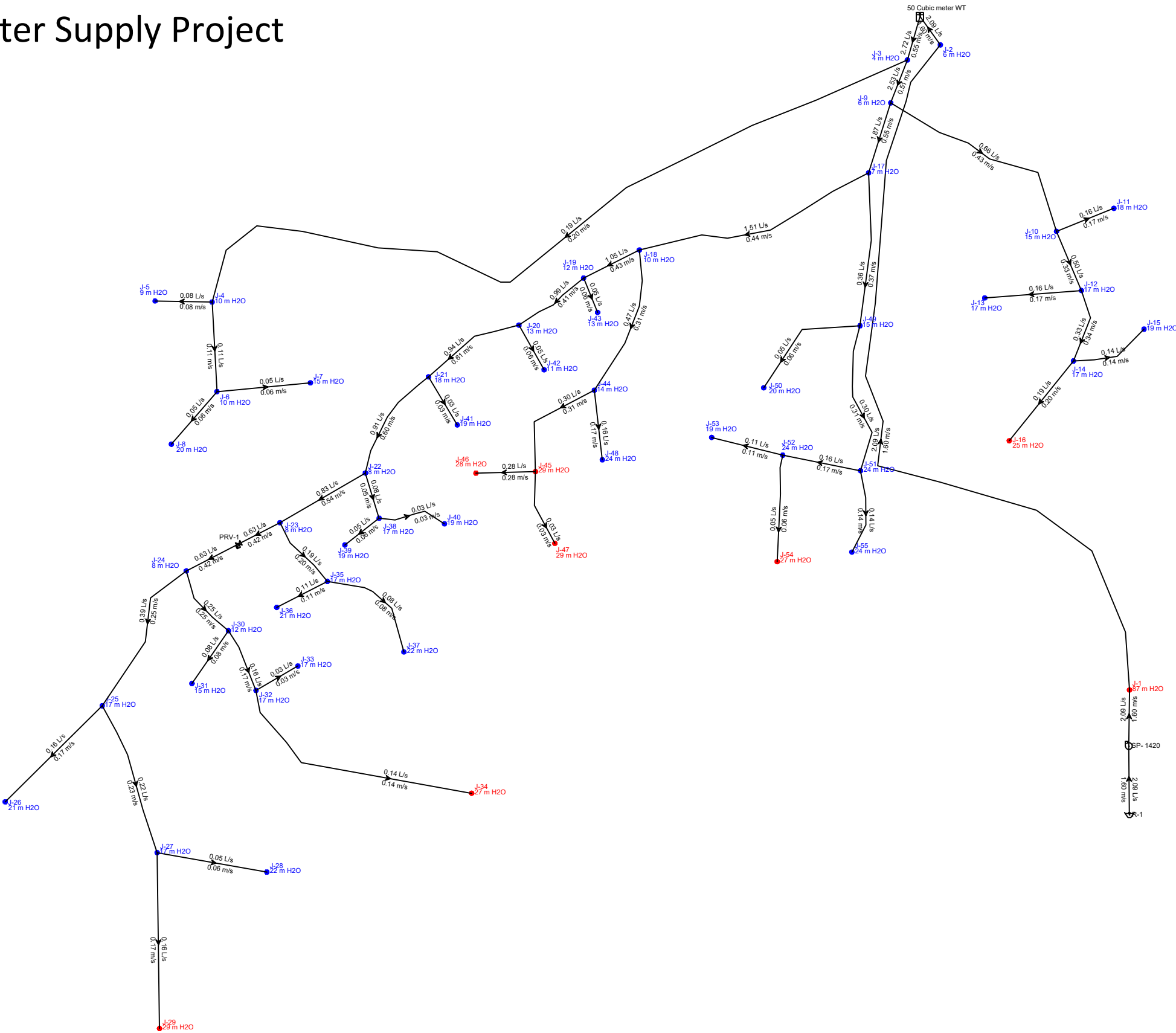
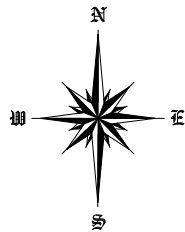
Surveyed by Eng. Neman "Sultani"
Drawing & designed by Abdul Majeed "Khamosh"
Review & check by Eng. Hikmatullah "Arifzai"
Approved by Eng. Shah Faisal


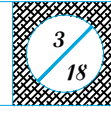

SHEET No. 2/18
30-Jul-2024

PROVINCE Ghor
VILLAGE Qudusi Sufla

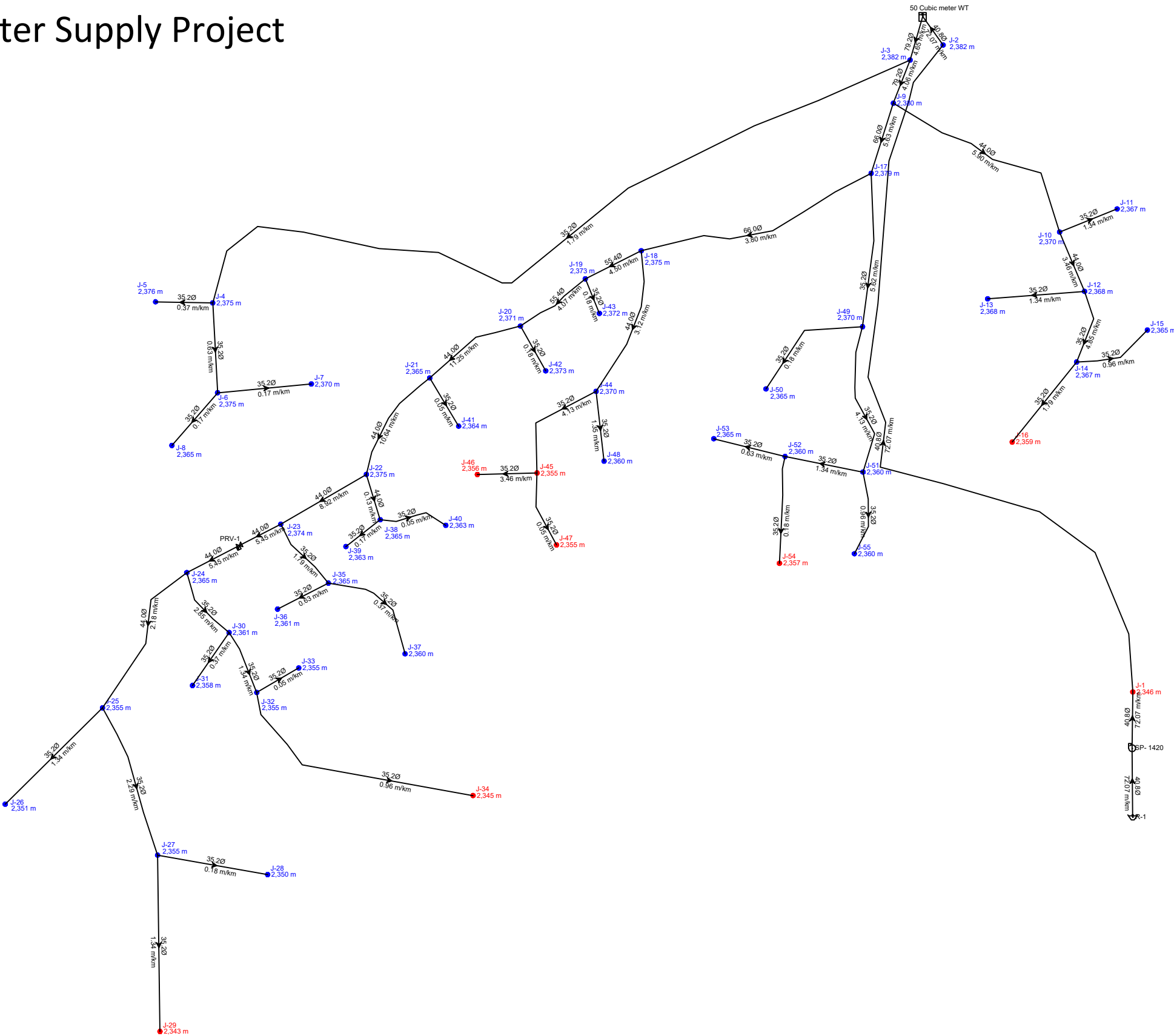
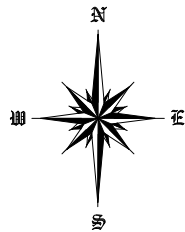
SIDA

Qudosu Sufla Village water Supply Project

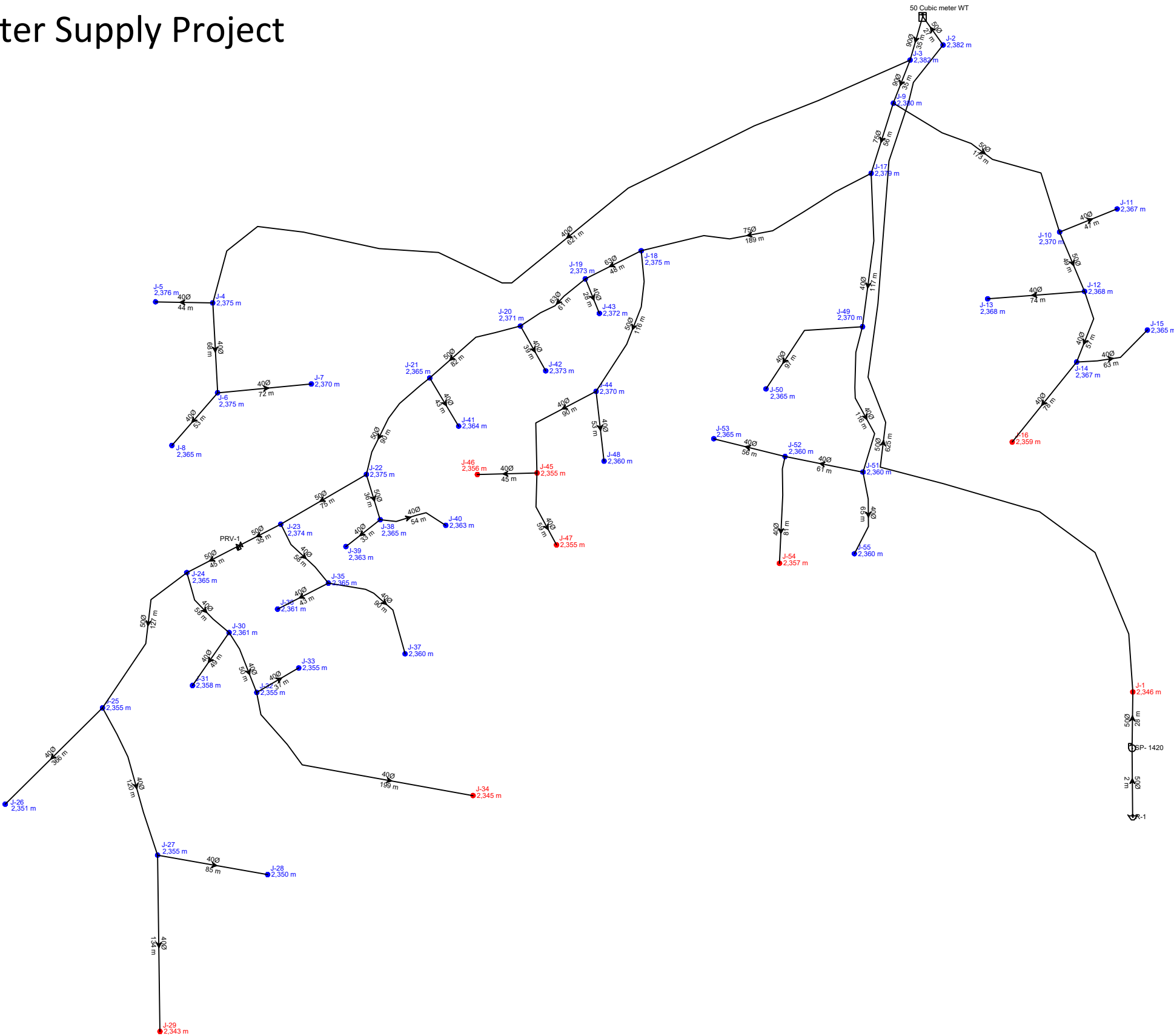
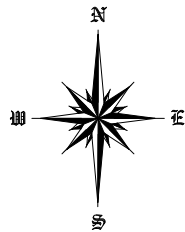




	Islamic Relief Worldwide-SIDA Food Security, WASH, and protection support to vulnerable families in Ghor- Afghanistan			Surveyed by	Eng. Neman "Sultani"	 30-Jul-2024	PROVINCE	Ghor	
	Department	WASH	All dimension in (m) otherwise stated	Drawing & designed by	Abdul Majeed "Khamosh"				
	Drawing Title	Node ID, Flow in (L/s), Velocity in (m/s), and Pressure in (mH2O)		Review & check by	Eng. Hikmatullah "Arifzai"		VILLAGE	Qudosu Sufla	
				Approved by	Eng. Shah Faisal				

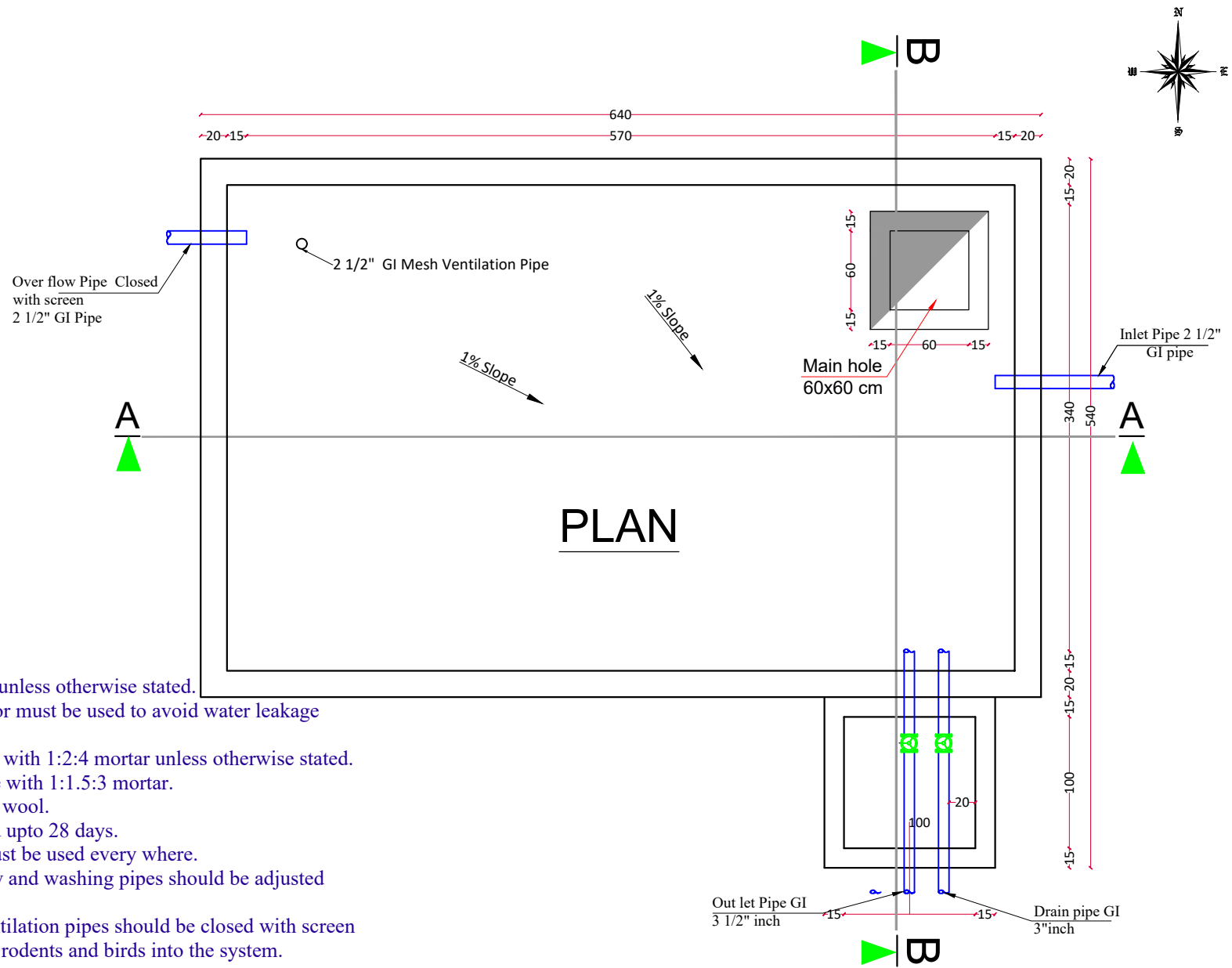
Qudusi Sufla Village water Supply Project



Qudusi Sufla Village water Supply Project



	<i>IRW</i>		Islamic Relief Worldwide-SIDA Food Security, WASH, and protection support to vulnerable families in Ghor- Afghanistan		Surveyed by	Eng. Neman "Sultani"	<div>SHEET NO.  30-Jul-2024</div>	PROVINCE	Ghor	<i>SIDA</i>	
			Department	WASH	All dimension in (m) otherwise stated	Drawing & designed by		Abdul Majeed "Khamosh"			
	Drawing Title		Node ID, Out Dia in (mm), Length in (m), and Elevation in (m)			Review & check by		Eng. Hikmatullah "Arifzai"	VILLAGE		Qudusi Sufla
						Approved by		Eng. Shah Faisal			



Note:

- 1- All dimensions are in cm unless otherwise stated.
- 2- During RCC work vibrator must be used to avoid water leakage from reservoir.
- 3- All PCC works should be with 1:2:4 mortar unless otherwise stated.
- 4- All RCC works should be with 1:1.5:3 mortar.
- 5- Isolation material is glass wool.
- 7- Curing must be continued upto 28 days.
- 8- Clear and Clean water must be used every where.
- 9- The inlet, outlet, overflow and washing pipes should be adjusted according to site condition.
- 10- End of overflow and Ventilation pipes should be closed with screen to avoid entrance of insects, rodents and birds into the system.



IRW

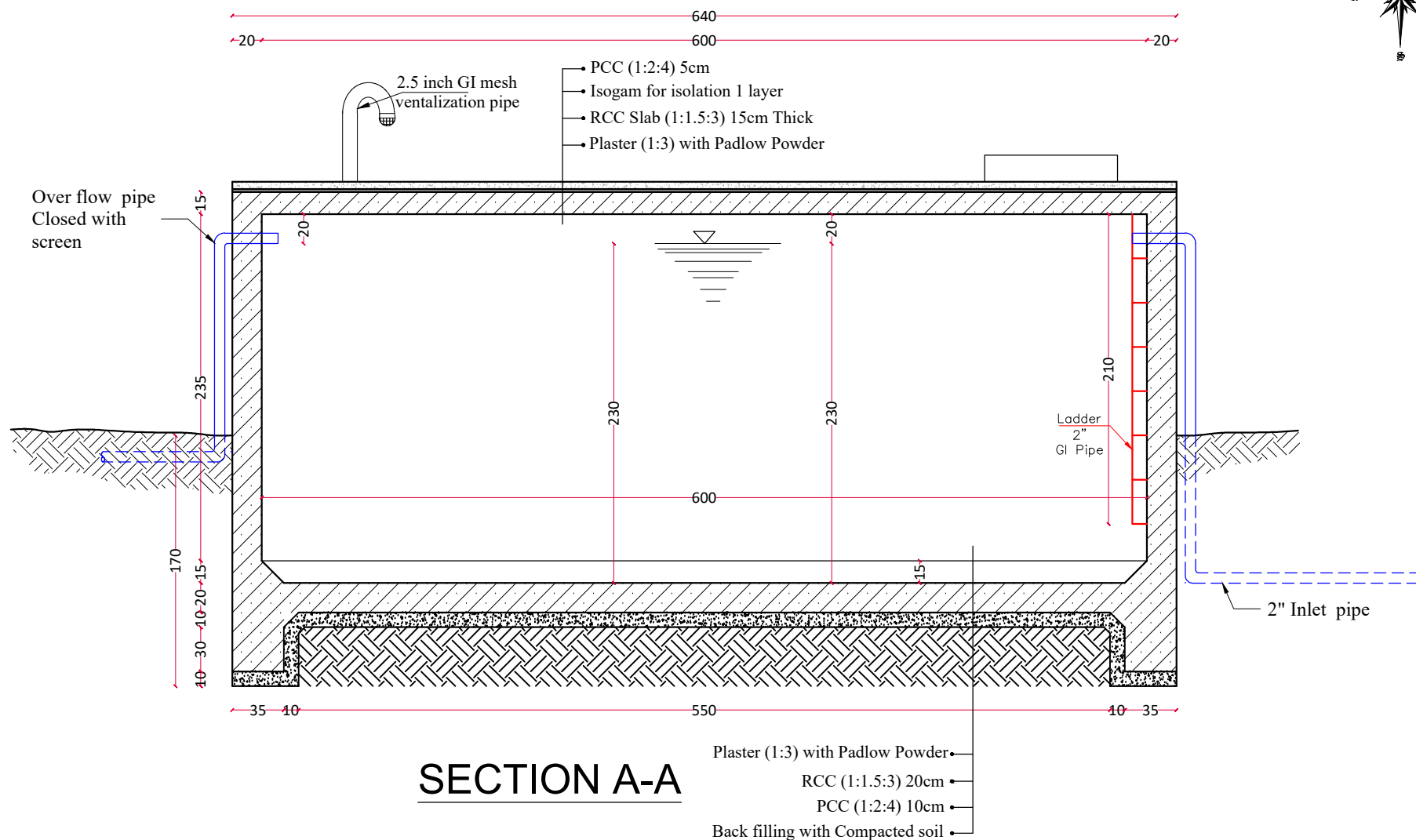
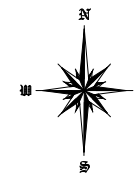
Islamic Relief Worldwide-SIDA Food Security, WASH, and protection support to vulnerable families in Ghor- Afghanistan		
Department	WASH	All dimension in cm otherwise stated
Drawing Title	50 Cubic Meter RCC Reservoir Plan	

Surveyed by	Eng. Neman "Sultani"
Drawing & designed by	Abdul Majeed Khamosh
Review & check by	Eng. Hikmatullah "Arifzai"
Approved by	Eng. Shah Faisal

SHEET NO.	6 18
30-July-2024	

PROVINCE	Ghor
VILLAGE	Qudosi Sufla

**SIDA
Project**



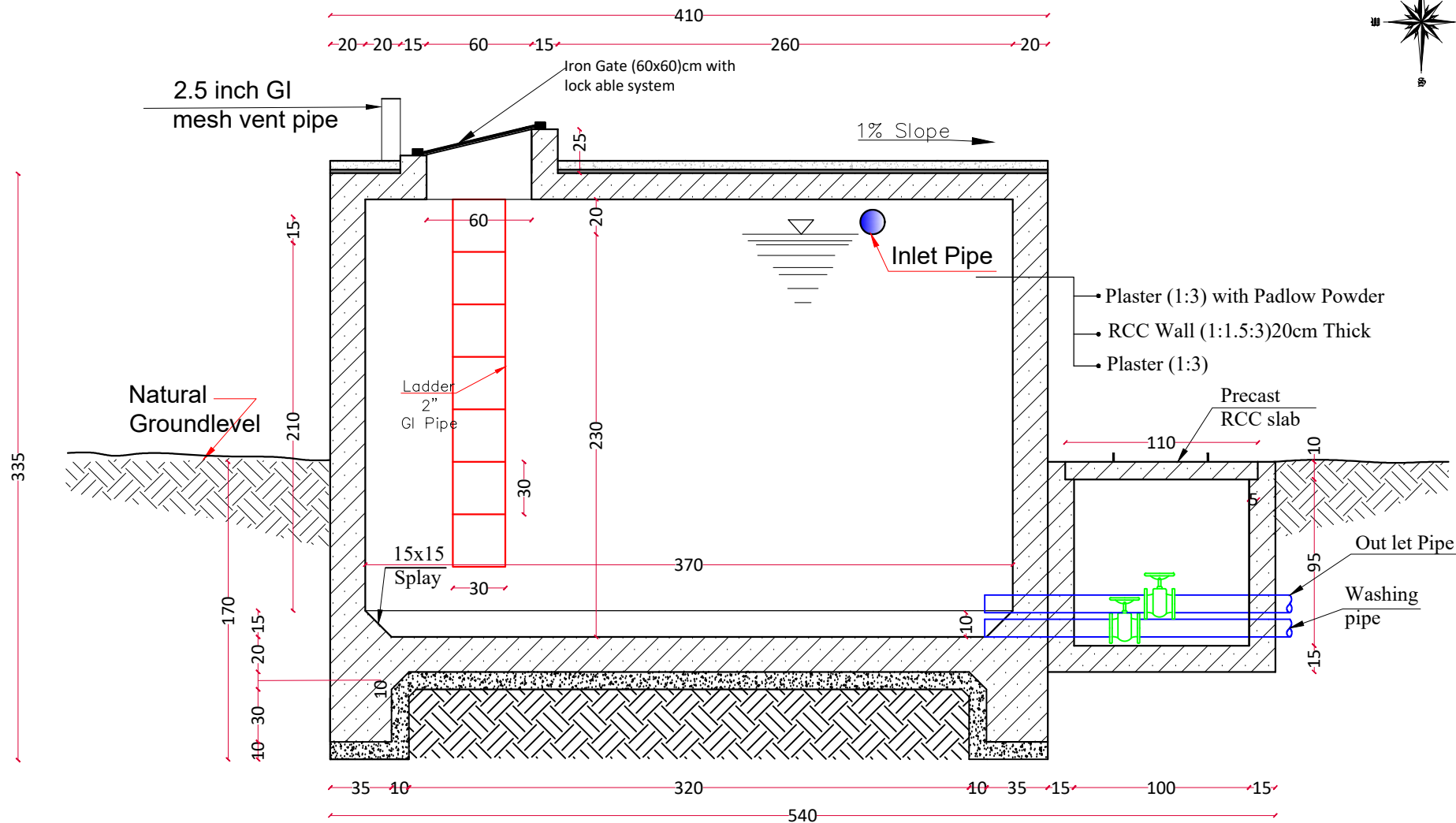
IRW

Islamic Relief Worldwide-SIDA Food Security, WASH, and protection support to vulnerable families in Ghor- Afghanistan		
Department	WASH	All dimension in cm otherwise stated
Drawing Title	Section A-A	

Surveyed by	Eng. Neman "Sultani"
Drawing & designed by	Abdul Majeed Khamosh
Review & check by	Eng. Hikmatullah "Arifzai"
Approved by	Eng. Shah Faisal

SHEET NO.	7 18	PROVINCE	Ghor	SIDA Project
		VILLAGE	Qudosi Sufia	

30-July-2024



SECTION B-B



IRW

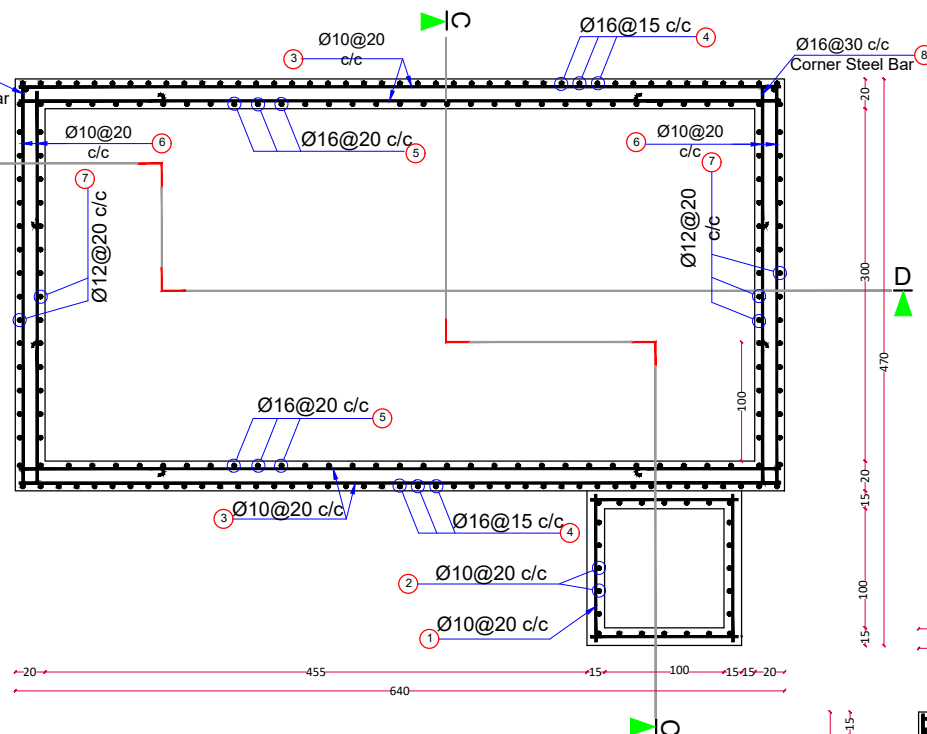
Islamic Relief Worldwide-SIDA Food Security, WASH, and protection support to vulnerable families in Ghor- Afghanistan		
Department	WASH	All dimension in cm otherwise stated
Drawing Title	Section B-B	

Surveyed by	Eng. Neman "Sultani"
Drawing & designed by	Abdul Majeed Khamosh
Review & check by	Eng. Hikmatullah "Arifzai"
Approved by	Eng. Shah Faisal

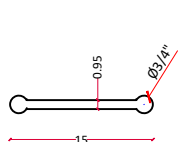
SHEET NO.	8/18
30-July-2024	

PROVINCE	Ghor
VILLAGE	Qudosi Sufla

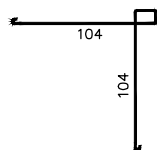
SIDA
Project



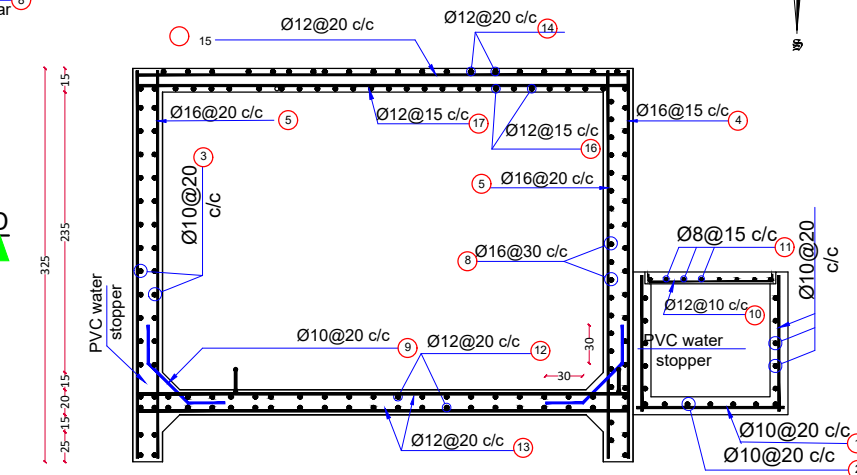
REINFORCEMENT PLAN



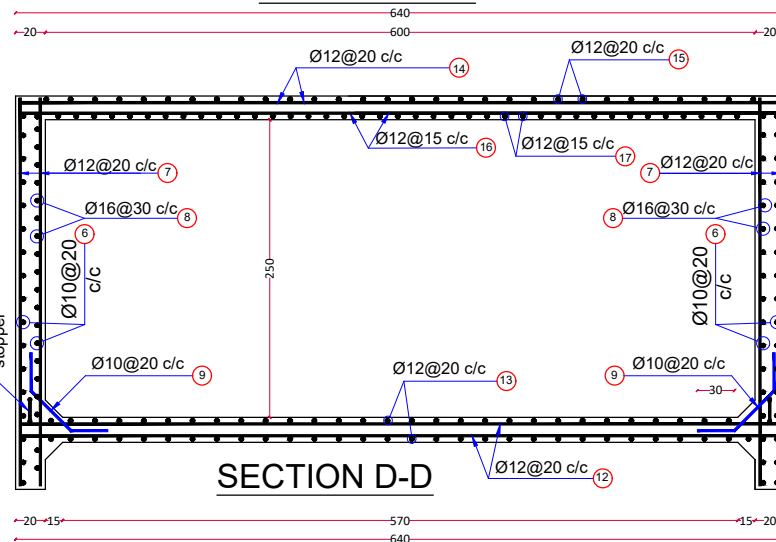
Detail of PVC water stopper



Corner Steel Bar Ø16 @30 c/c
L=250cm



SECTION C-C



SECTION D-D



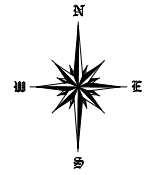
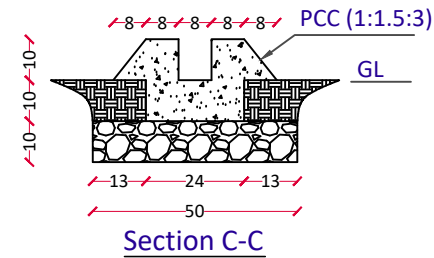
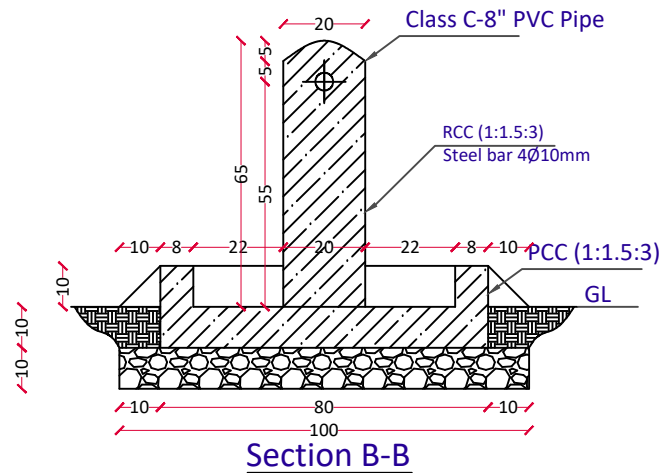
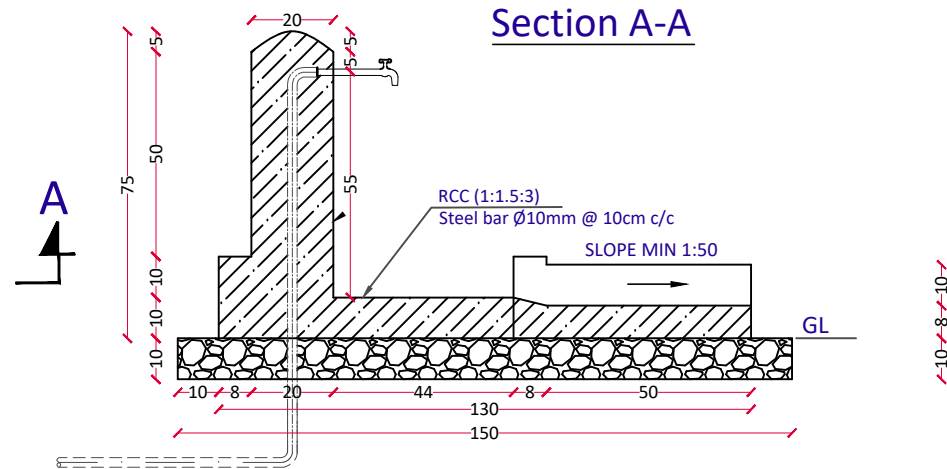
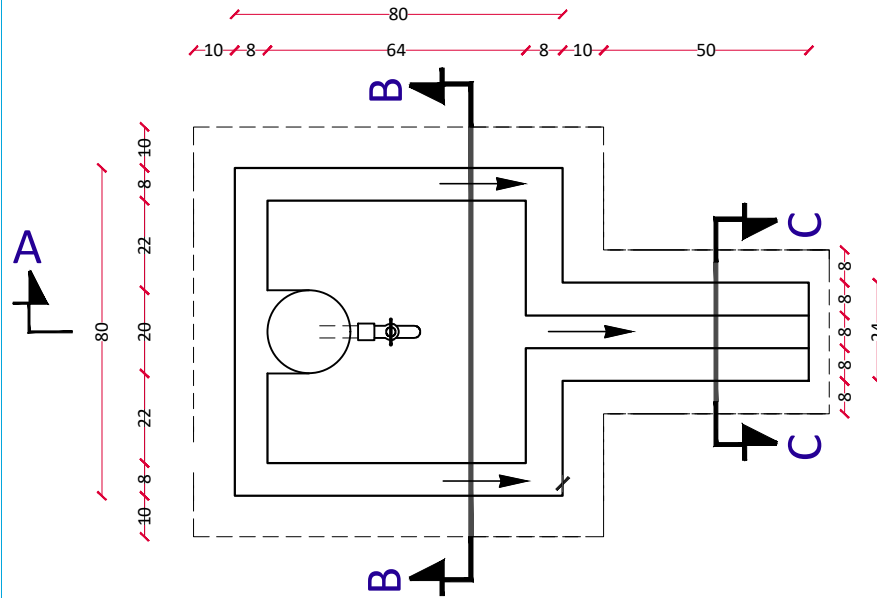
IRW

Islamic Relief Worldwide-SIDA Food Security, WASH, and protection support to vulnerable families in Ghor- Afghanistan		
Department	WASH	All dimension in cm otherwise stated
Drawing Title	Reservoir section and steel bar detail	

Surveyed by	Eng. Neman "Sultani"
Drawing & designed by	Abdul Majeed Khamosh
Review & check by	Eng. Hikmatullah "Arifzai"
Approved by	Eng. Shah Faisal

SHEET NO.	<div>9 18</div>	PROVINCE	Ghor	SIDA Project
		VILLAGE	Qudosi Sufla	
30-July-2024				

Stand Tap



IRW

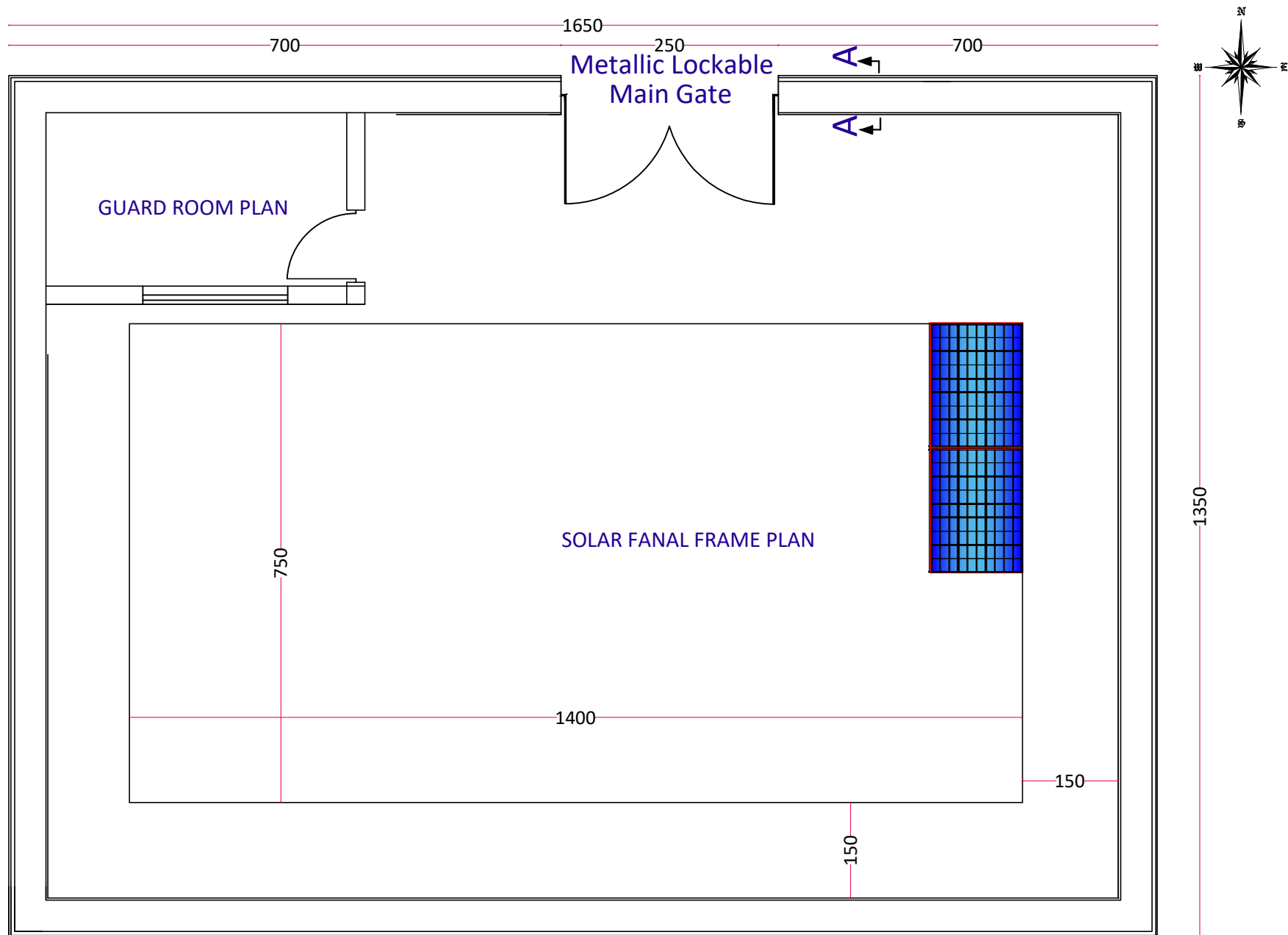
Islamic Relief Worldwide-SIDA Food Security, WASH, and protection support to vulnerable families in Ghor- Afghanistan		
Department	WASH	All dimension in cm otherwise stated
Drawing Title	House connection stand tape	

Surveyed by	Eng. Neman "Sultani"
Drawing & designed by	Abdul Majeed Khamosh
Review & check by	Eng. Hikmatullah "Arifzai"
Approved by	Eng. Shah Faisal

SHEET NO.	11/18
30-July-2024	

PROVINCE	Ghor
VILLAGE	Qudosi Sufla

SIDA
Project



IRW

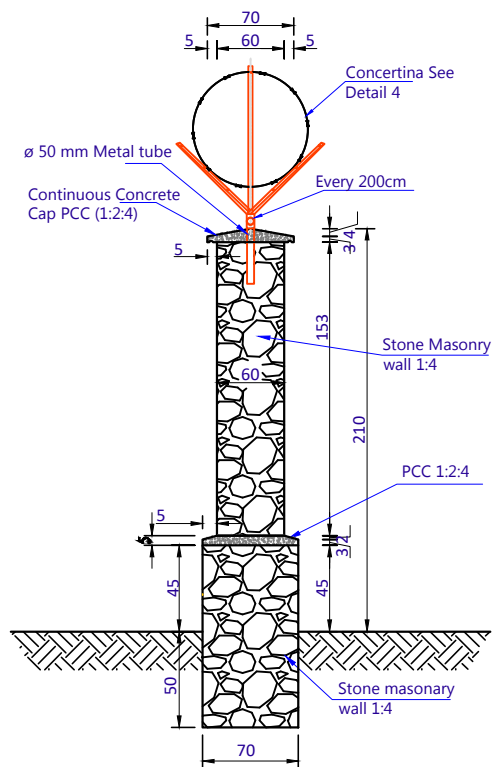
Islamic Relief Worldwide-SIDA Food Security, WASH, and protection support to vulnerable families in Ghor- Afghanistan		
Department	WASH	All dimension in cm otherwise stated
Drawing Title	Boundary wall and Guard room plan	

Surveyed by	Eng. Neman "Sultani"
Drawing & designed by	Abdul Majeed Khamosh
Review & check by	Eng. Hikmatullah "Arifzai"
Approved by	Eng. Shah Faisal

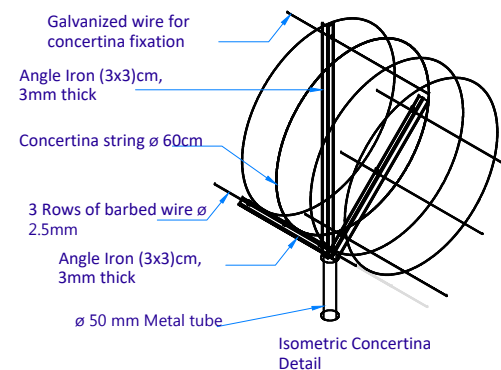
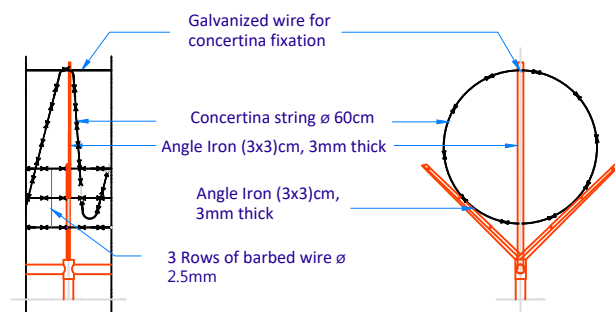
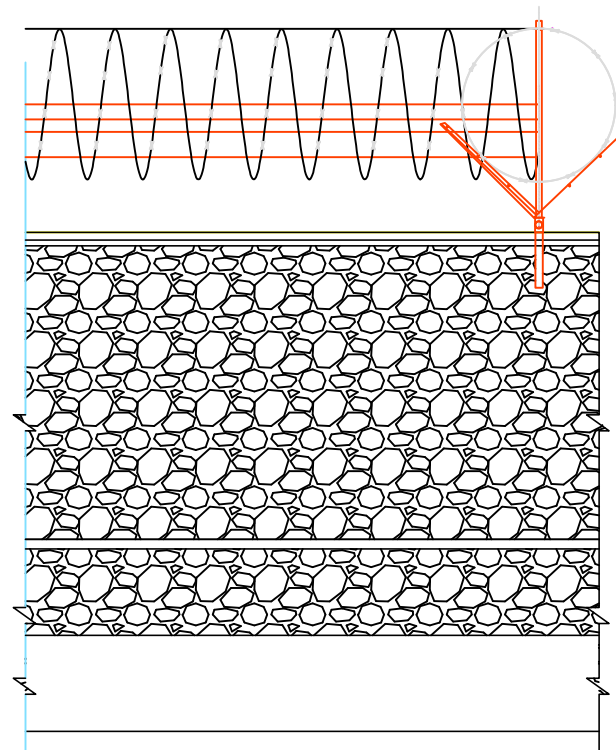
SHEET NO.	<div>12 18</div>
30-July-2024	

PROVINCE	Ghor
VILLAGE	Qudosai Sufla

**SIDA
Project**



Section A-A



Isometric Concertina Detail



IRW

Islamic Relief Worldwide-SIDA	
Food Security, WASH, and protection support to vulnerable families in Ghor- Afghanistan	
Department	WASH
Drawing Title	boundary section and barbed wire plan

All dimension in cm
otherwise stated

Surveyed by	Eng. Neman "Sultani"
Drawing & designed by	Abdul Majeed Khamosh
Review & check by	Eng. Hikmatullah "Arifzai"
Approved by	Eng. Shah Faisal

SHEET
NO.

13
18

30-July-2024

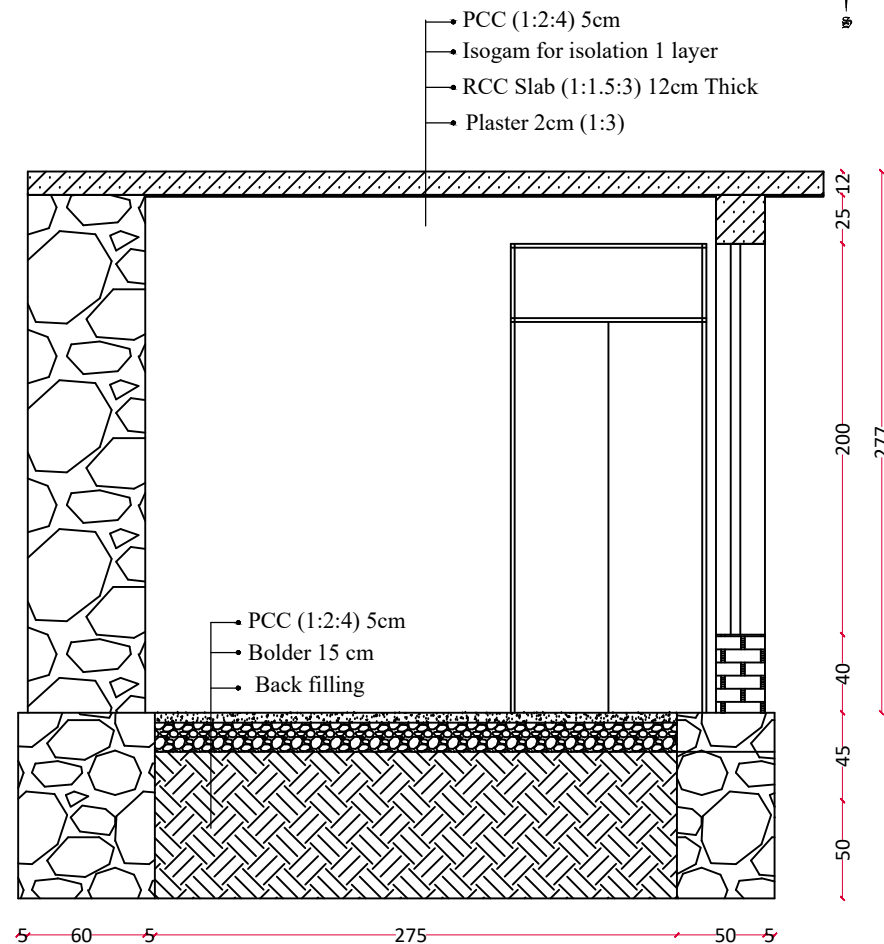
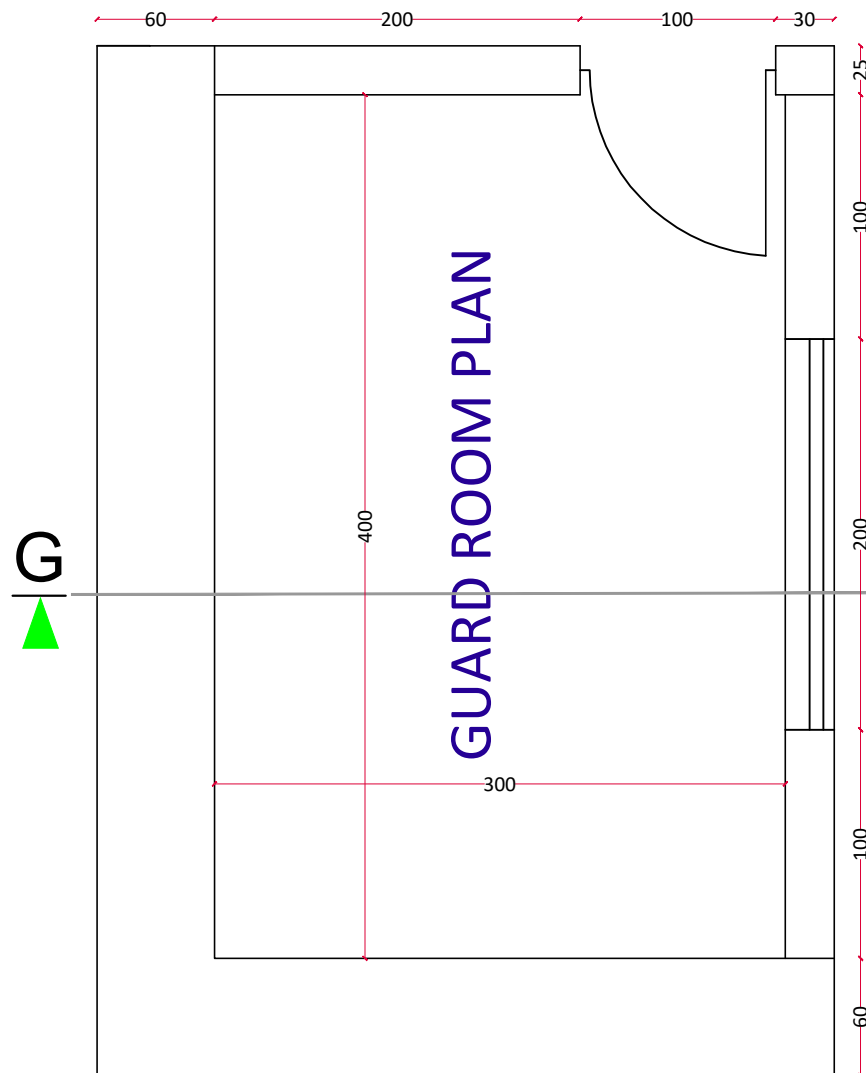
PROVINCE

Ghor

VILLAGE

Qudosi Sufia

SIDA
Project



IRW

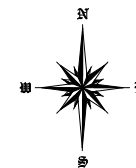
Islamic Relief Worldwide-SIDA Food Security, WASH, and protection support to vulnerable families in Ghor- Afghanistan		
Department	WASH	All dimension in cm otherwise stated
Drawing Title	Guard Room Plan	

Surveyed by	Eng. Neman "Sultani"
Drawing & designed by	Abdul Majeed Khamosh
Review & check by	Eng. Hikmatullah "Arifzai"
Approved by	Eng. Shah Faisal

SHEET NO.	14/18
30-July-2024	

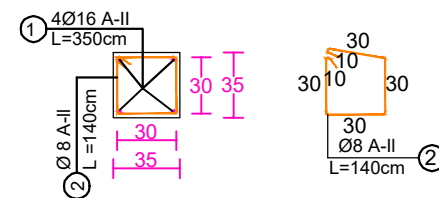
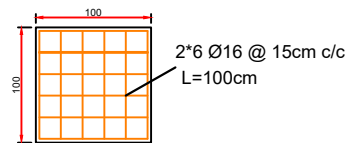
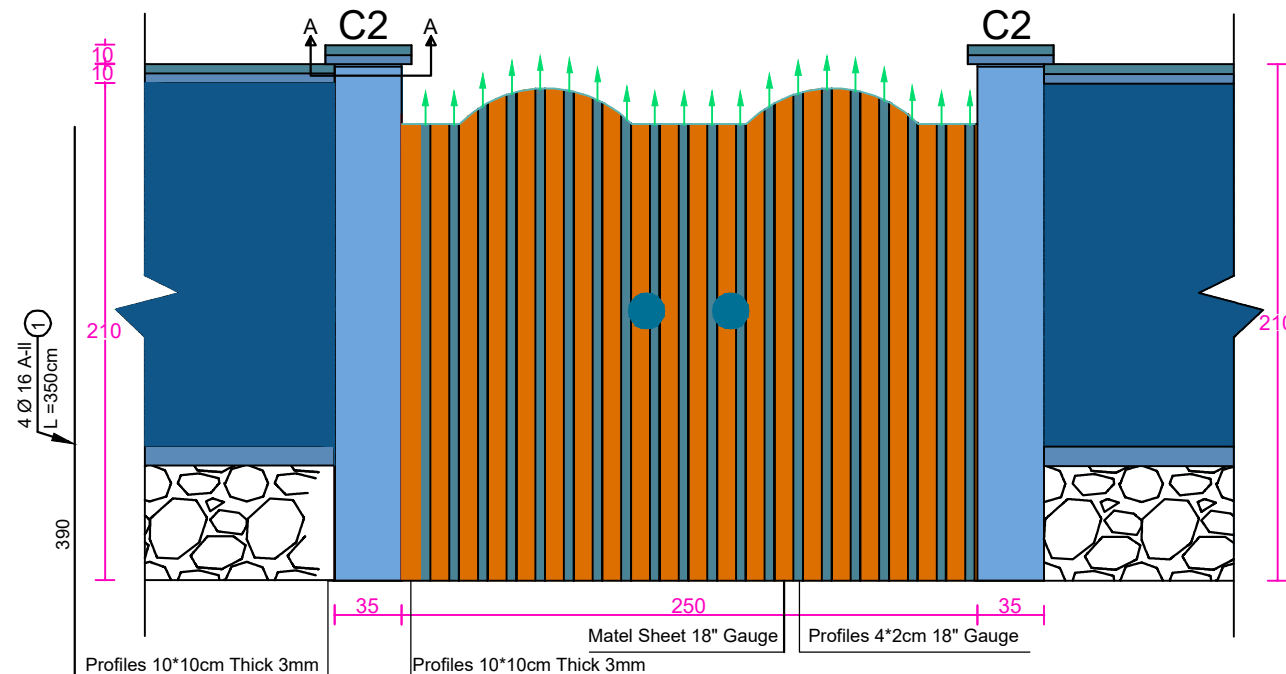
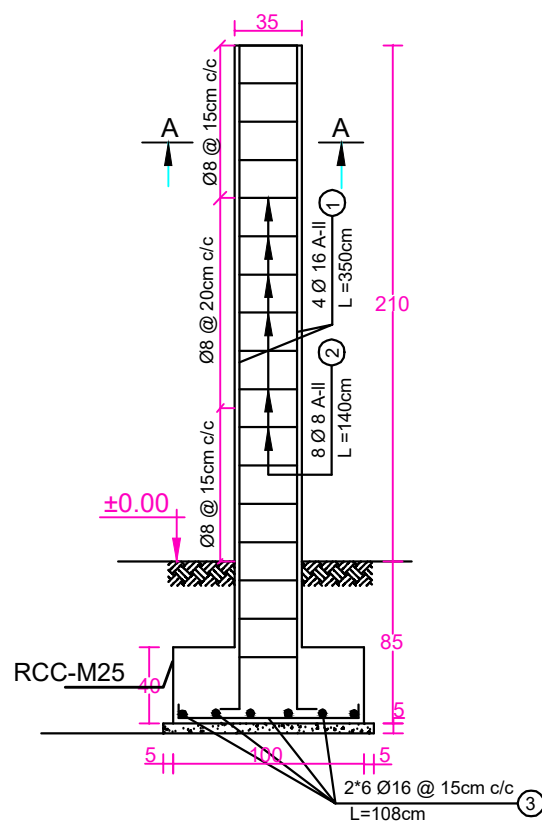
PROVINCE	Ghor
VILLAGE	Qudosi Sufia

SIDA
Project



Main Gate Front View

Column - C2 No=3



Footing for Main gate columns

Sec. A-A



IRW

Islamic Relief Worldwide-SIDA
Food Security, WASH, and protection support to vulnerable families in Ghor- Afghanistan

Department: WASH
Drawing Title: Metallic Gate front view , Section and detail

All dimension in cm
otherwise stated

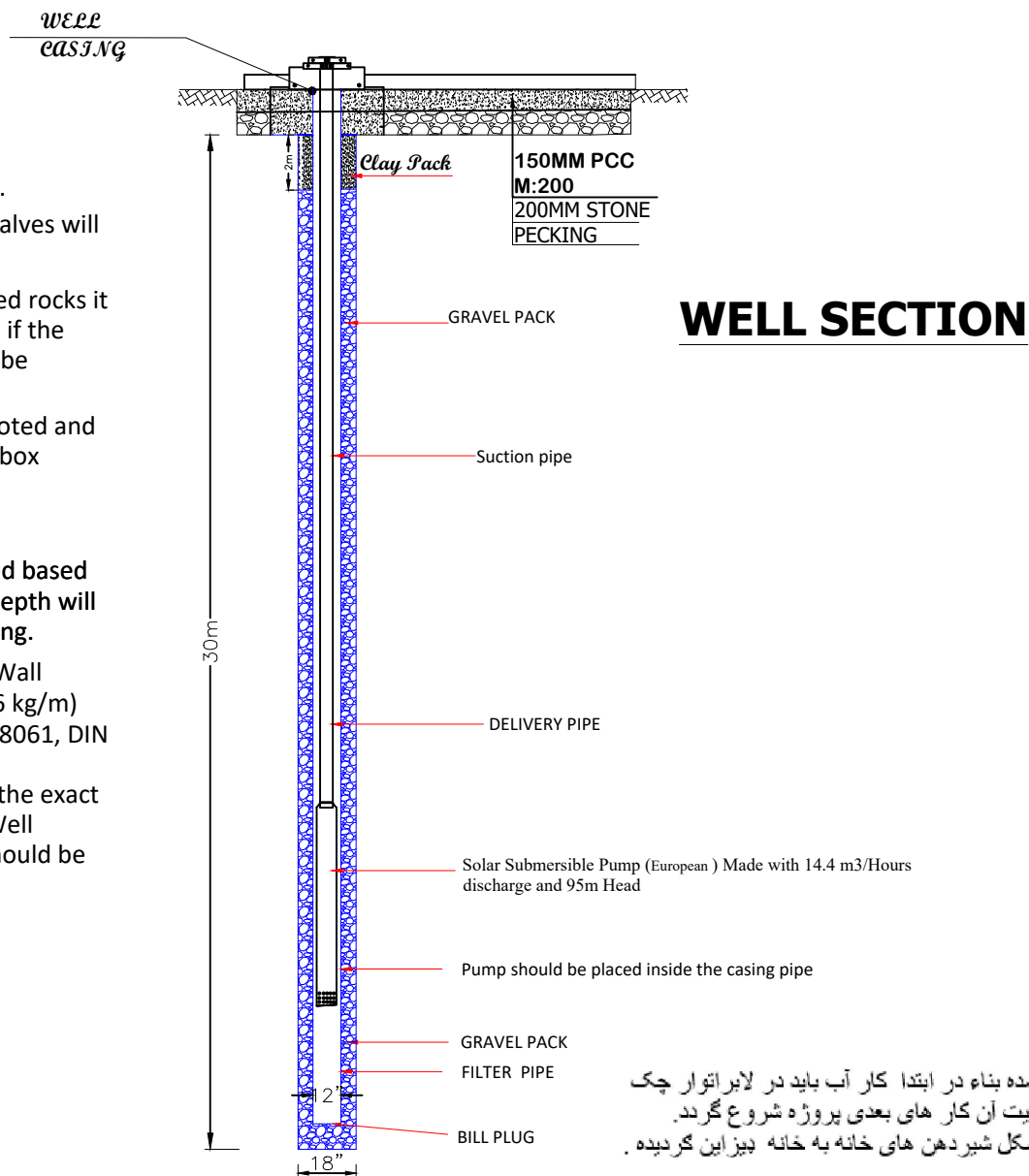
Surveyed by: Eng. Neman "Sultani"
Drawing & designed by: Abdul Majeed Khamosh
Review & check by: Eng. Hikmatullah "Arifzai"
Approved by: Eng. Shah Faisal

SHEET NO. 15/18
30-July-2024

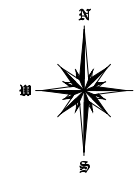
PROVINCE: Ghor
VILLAGE: Qudosi Sufla

SIDA Project

- 1-Well designed by WASH department.
- 2-The working pressure for pipes and valves will be 16 or 20 bar (290 PSI)
- 3- If the ground stratum are made of bed rocks it no need for installation of casing pipes. if the stratum are made of Loss soil it should be stablized by installation casing pipes.
- 4-Each drilled strata depth should be noted and soil sample should be kept in a sample box separately .
- 5-Pump test for 8 hours.
- 6-the depth of filter pipe has considered based on the previous experience . the true depth will be determined after well practical drilling.
- 7-Diameter=(12") inches, Class C, Min Wall Thickness (12.1) mm, Min weight (16.6 kg/m)
According to ASTM D1785 Sch.80, DIN 8061, DIN 8062, ASTM F480 Standards
- 8-the Size of Gravel Packing (3-6) mm, the exact size will be declared after boring and Well Hydrological calculations, the Gravel should be clean and technical acceptable

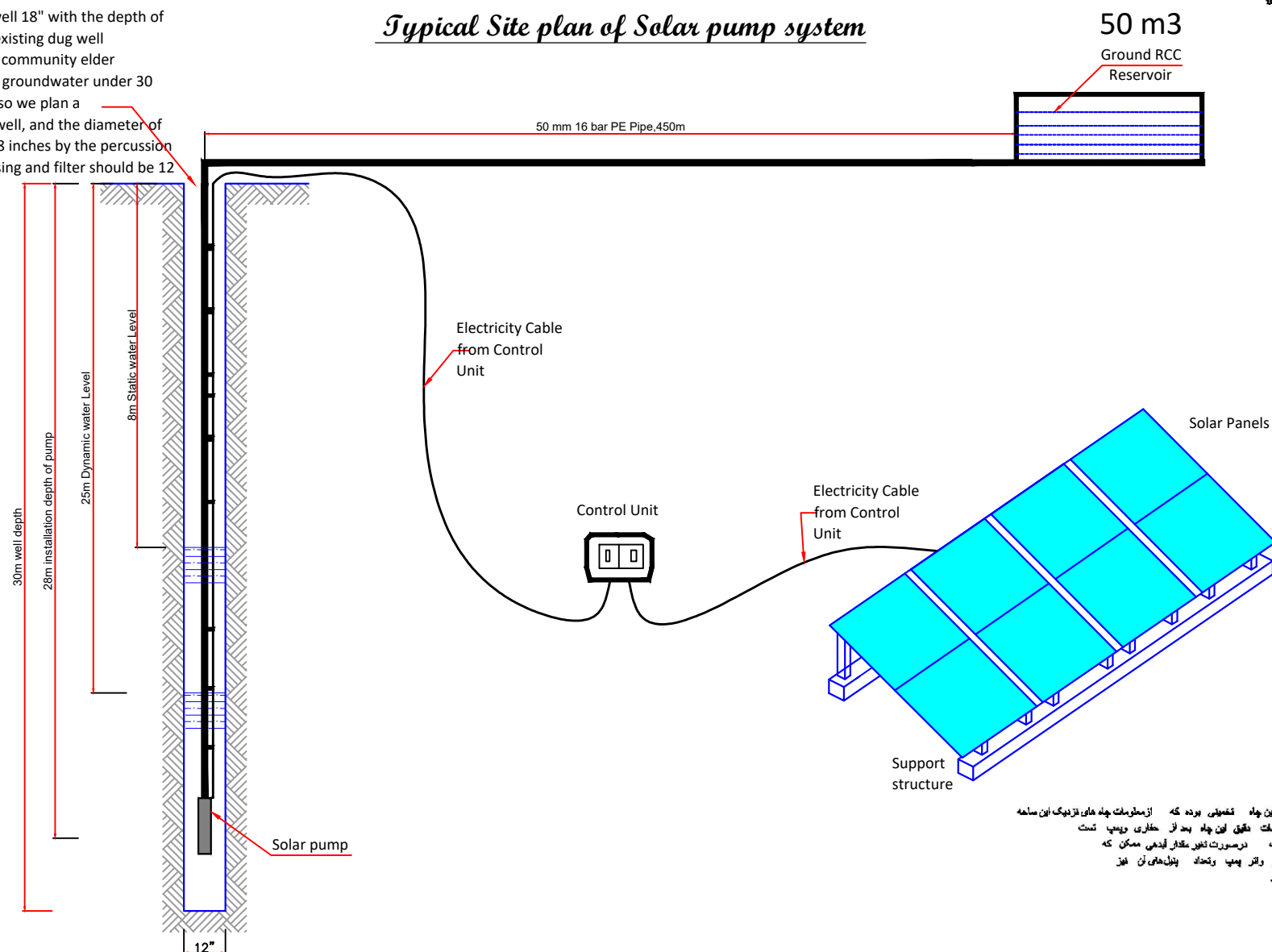


نوت:
از اینکه آب چاه در لایر اتوار تست نشده بقاء در ابتدا کار آب باید در لایر اتوار چک شود و بعد از حصول اطمینان از کیفیت آن کار های بعدی پروژه شروع گردد.
همچنان نظر به مشخصات شبکه به شکل شیر دهن های خانه به خانه بزر این گردیده



Typical Site plan of Solar pump system

New proposed well 18" with the depth of 30m as per the existing dug well observation and community elder information, the groundwater under 30 meters has salt, so we plan a 30-meter-deep well, and the diameter of digging will be 18 inches by the percussion machine; the casing and filter should be 12 inches. Class C



IRW

Islamic Relief Worldwide-SIDA
Food Security, WASH, and protection support to vulnerable families in Ghor- Afghanistan
Department WASH
Drawing Title TDH
All dimension in cm
otherwise stated

Surveyed by Eng. Neman "Sultani"
Drawing & designed by Abdul Majeed Khamosh
Review & check by Eng. Hikmatullah "Arifzai"
Approved by Eng. Shah Faisal

SHEET
NO.

17
18

PROVINCE

Ghor

VILLAGE

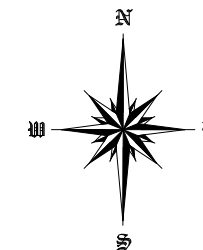
Qudosi Sufia

30-July-2024

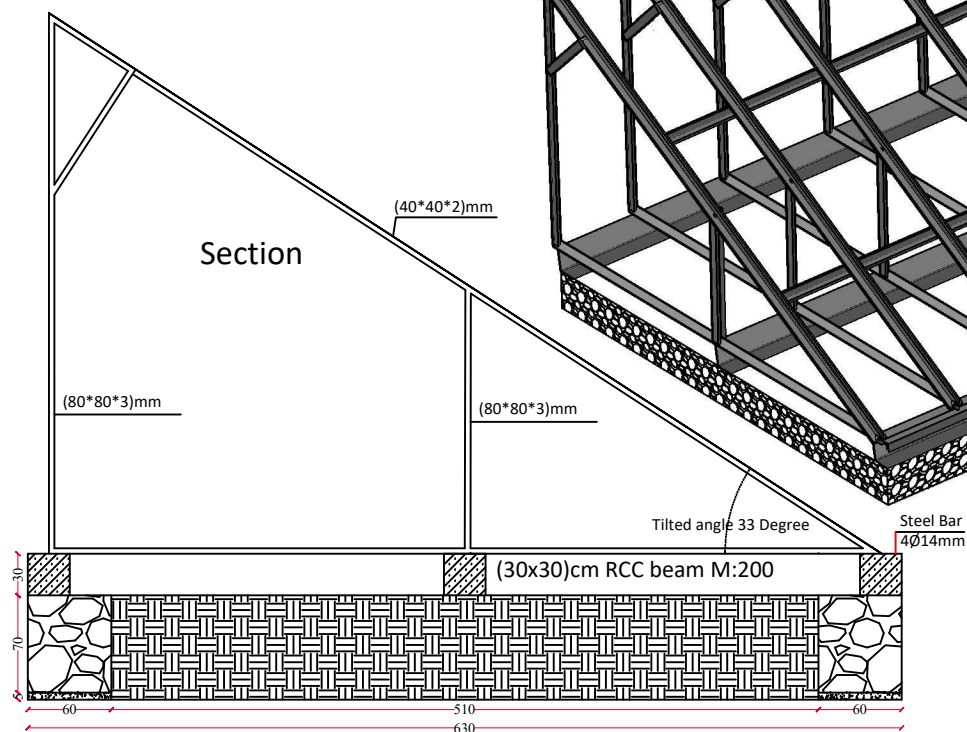
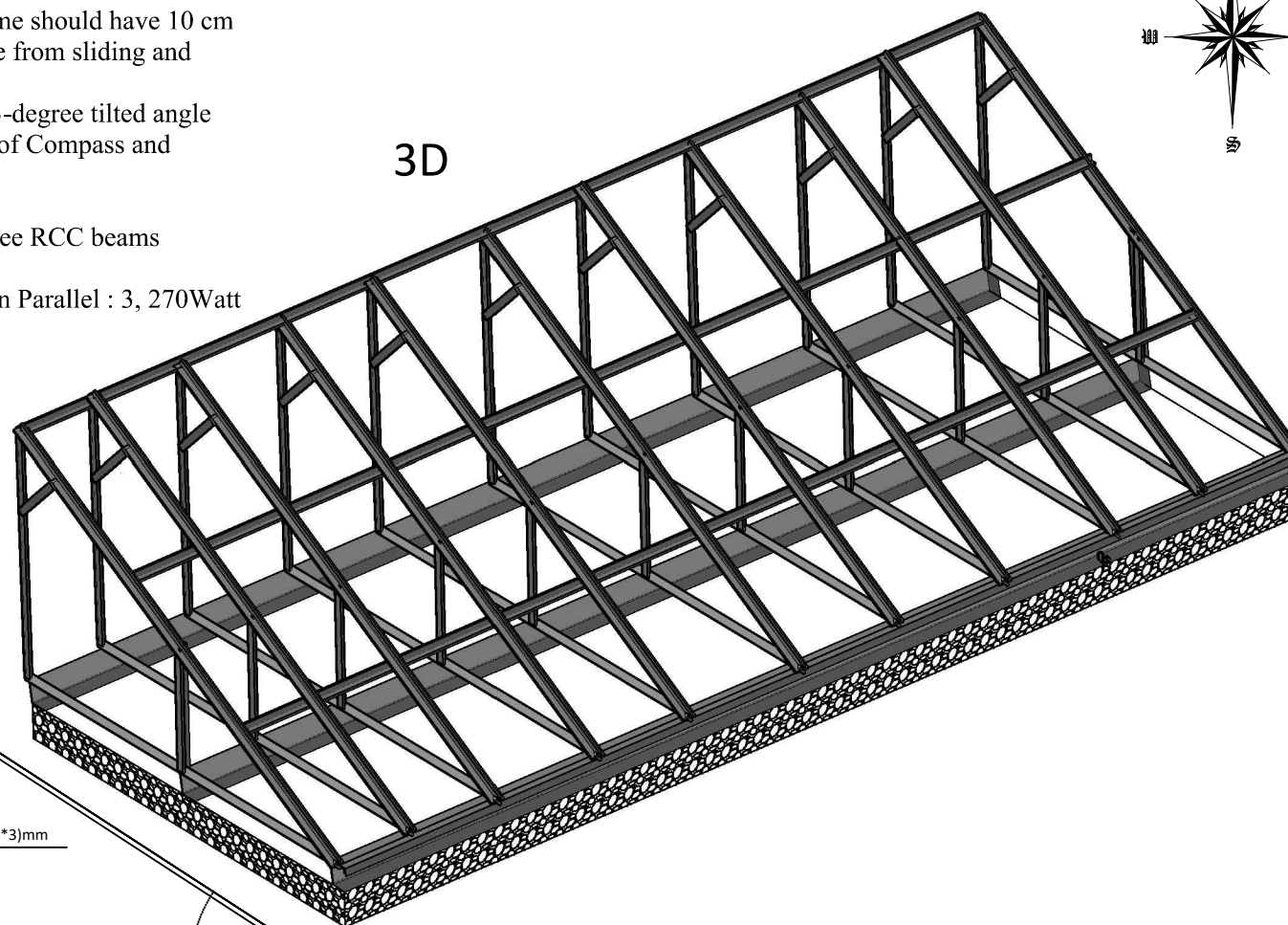
SIDA
Project

Qudosu Suflah Village water Supply Project

- 3- All solar panels should have 10 Number Nut&bold and between two solar panel vertical array frame should have 10 cm space for air vent to protect the solar frame from sliding and overturning.
- 4- the solar panel's frame should have a 33-degree tilted angle with the surface of the yard as instruction of Compass and Groundfos software's anp d product.
- 5- under the frame we have (30*30)cm three RCC beams according to the drawing
- 6- Number of solar modules in series: 10 in Parallel : 3, 270Watt



3D



IRW

Islamic Relief Worldwide-SIDA
Food Security, WASH, and protection support to vulnerable families in Ghor- Afghanistan

Department WASH
Drawing Title Solar Frame Plan And Section

All dimension in cm
otherwise stated

Surveyed by Eng. Neman "Sultani"
Drawing & designed by Abdul Majeed Khamosh
Review & check by Eng. Hikmatullah "Arifzai"
Approved by Eng. Shah Faisal

SHEET NO. 18/18
30-July-2024

PROVINCE Ghor
VILLAGE Qudosu Sufla

SIDA
Project