

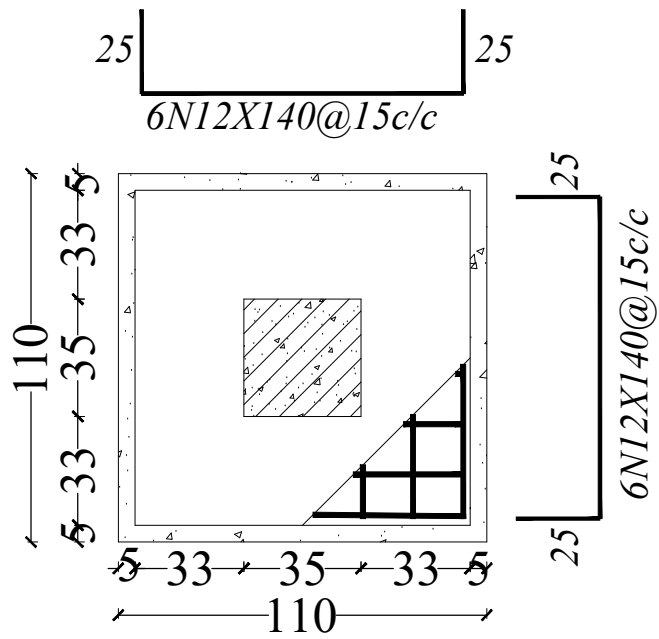
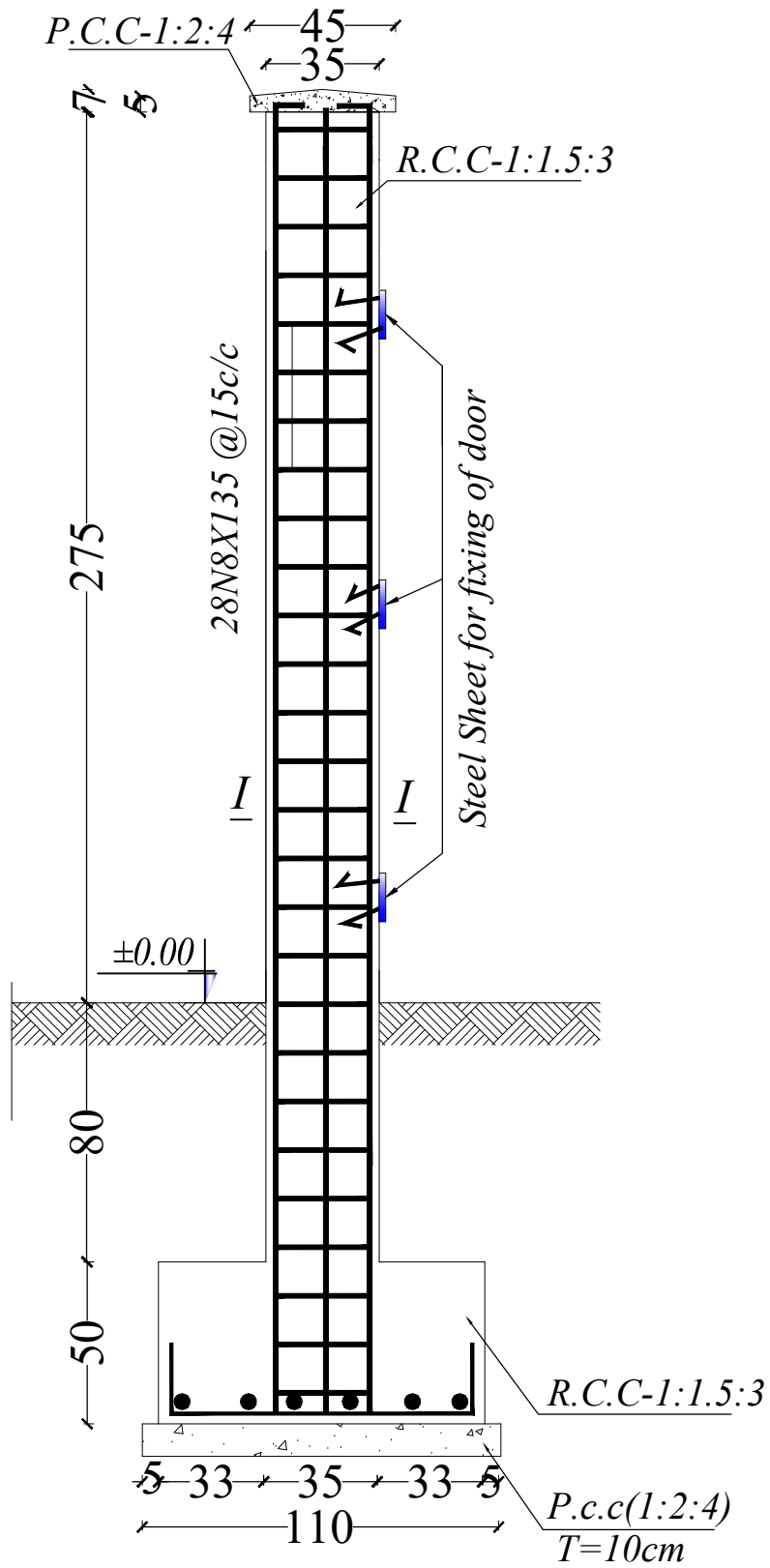
MINISTRY OF EDUCATION  
INFRASTRUCTURE SERVICE DEPARTMENT



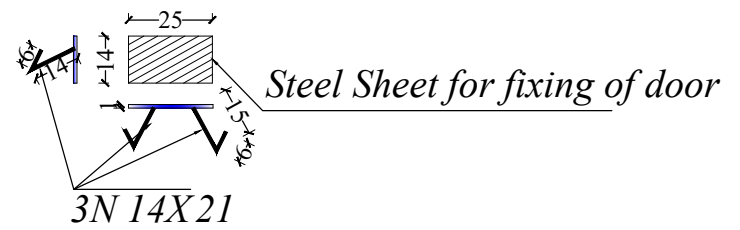
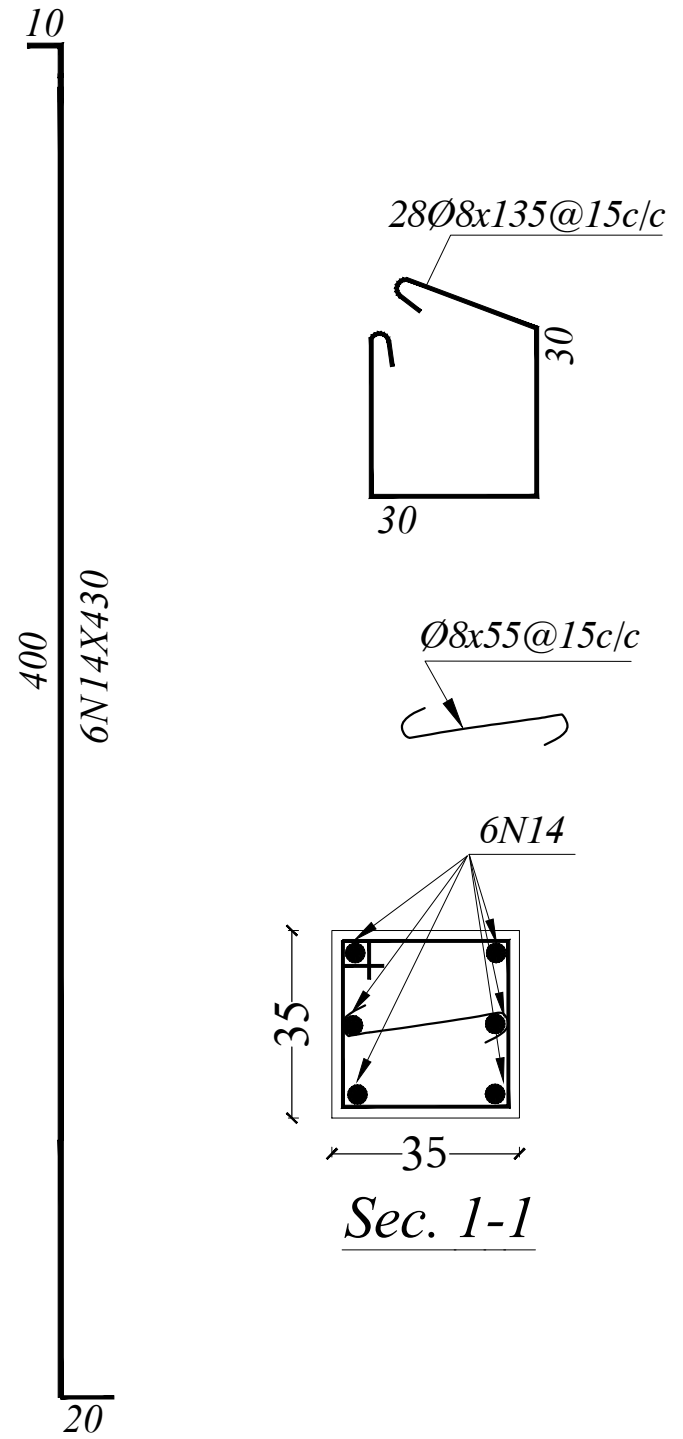
STANDARD WASH PACKAGE  
IN SCHOOL, AFGHANISTAN

Surveyed by	Sharifullah, Safiullah, Mahfooz	APPROVED BY		ARCHITECTURAL	PROJECT NAME	Shahid Musawi Stone masonry Boundary Wall
Drawing by	Sharifullah, Safiullah, Mahfooz	SCALE	AS SHOWN (A3)	1 3		
		DATE	Feb 2024			

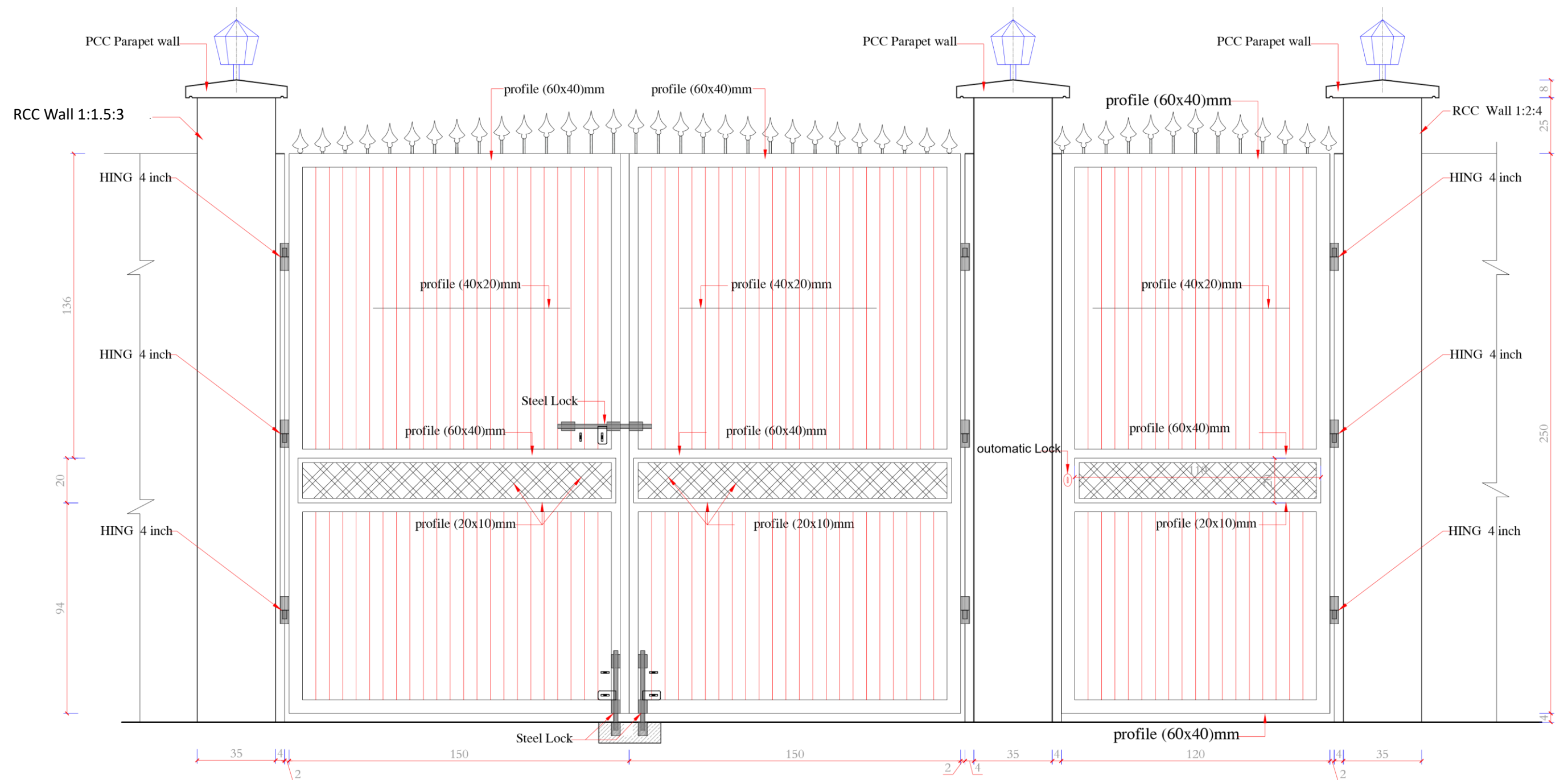
C-1 (No=3)



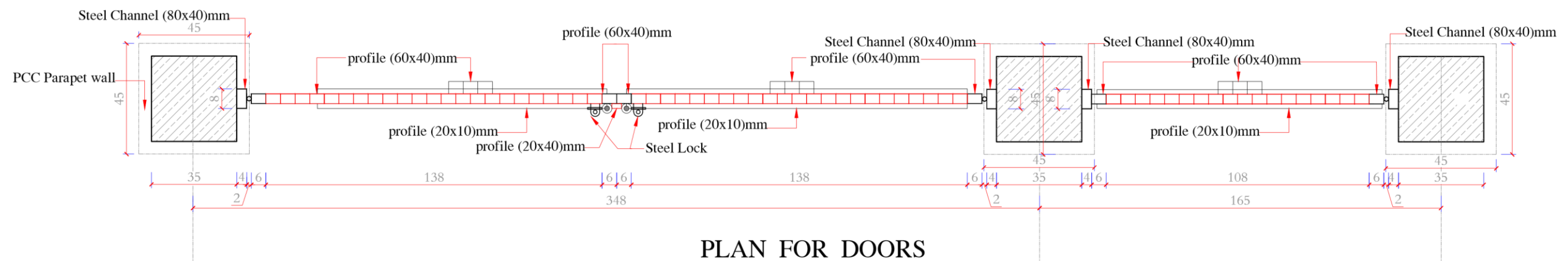
F-1  
No -3



*Note-All Diminsion in CM*



FRONT ELEVATION



PLAN FOR DOORS  
DOOR FOR CARS (300X250)cm  
DOOR FOR STUDENT (120X250)cm



MINISTRY OF EDUCATION  
DEPARTMENT OF CONSTRUCTION



STANDARD SCHOOL DESIGN  
IN AFGHANISTAN

ARCHITECT/DESIGN	KHALILULLAH Y Z	APPROVED: Doc/Moe	ENG AB MOMIN RAAD	DRAWING No	ARCHITECTURE
CHECKED BY	ENG S RASUOL AFGHANI	SCALE	AS SHOWN (A)3	SHEET No	1/2
TECH- APPROVED BY	ENG AB MATIN MAQOL	DATE	12.12.2012		

PROJECT NAME

MOE SCHOOLS DOOR

DRAWING TITLE

VIEW AND PLAN