




Project Name: AbiNaw Mixed Secondary School Assessment

Project Employer: UNITED NATIONS CHILDREN'S FUND

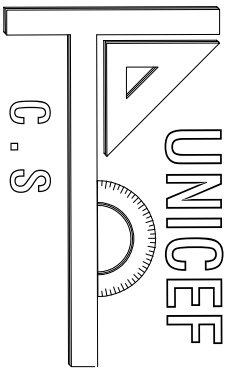
Prepared by: Construction Section

Drawing Sheets

Date: 05 FEB, 2024

<div><div><div>UNICEF</div><div>C . S</div></div><div><div>SHEET No</div><div>M-1/2</div></div><div><div>SCALE</div><div>AS SHOWN</div></div><div><div>DATE</div><div>JAN . 2024</div></div></div>	TITLE : Site Plan		PROJECT EMPLOYER UNITED NATIONS CHILDREN'S FUND		<div><div>unicef</div><div></div></div>
	DRAWING BY	Mohammad Ali Eltaf	construction section		
	CHECKED BY		Renovation of AbiNaw Mixed Secondary School		
	APPROVED BY		All dimension are in cm		





SHEET No M-1/2

SCALE AS SHOWN

DATE JAN . 2024

TTITLE : Floor Plan

DRAWING BY Mohammad Ali Eltaf

CHECKED BY

APPROVED BY

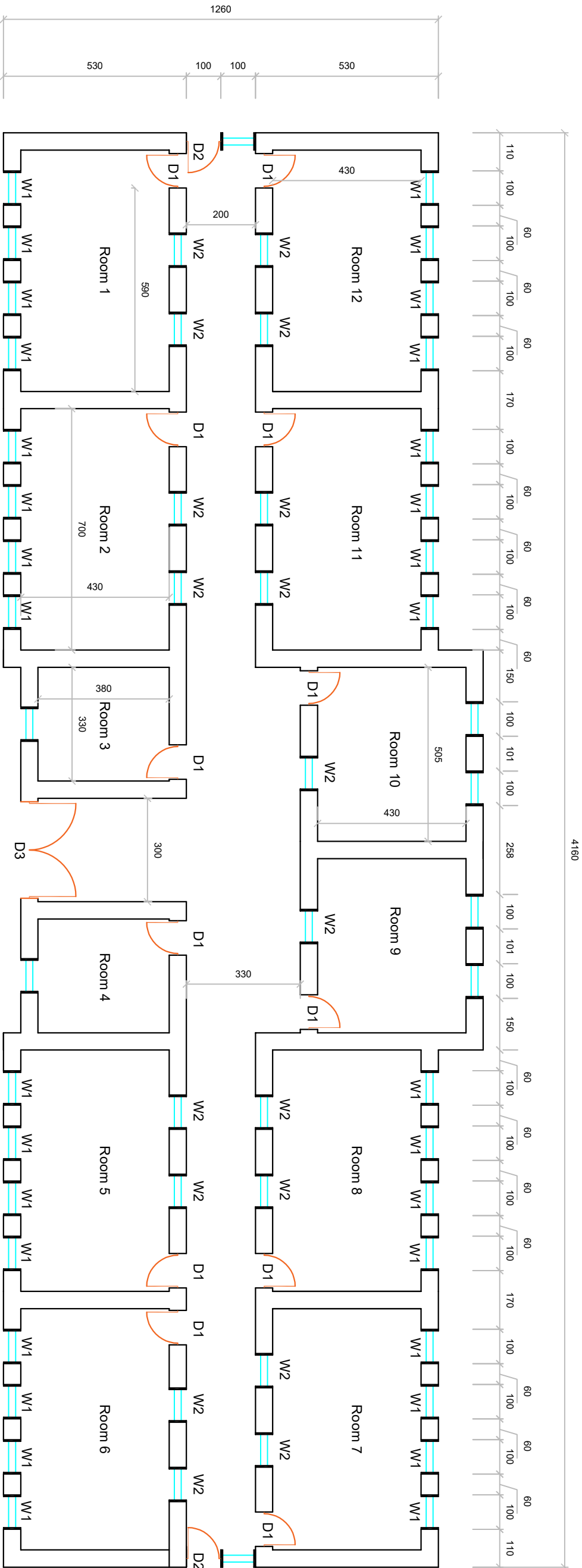
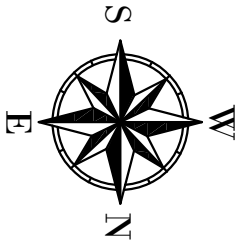
PROJECT EMPLOYER

UNITED NATIONS CHILDRENS FUND

construction section

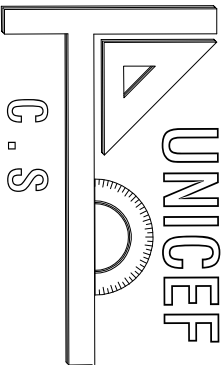
Renovation of Abinaw Mixed Secondary School

All dimension are in cm



Symbol	Size (cm)
W1	100x250
W2	120x72
D1	100X220
D2	110X220
D3	280X220





SHEET No	M-1/2
SCALE	AS SHOWN
DATE	JAN . 2024

TITLE : Damage Notation Plan

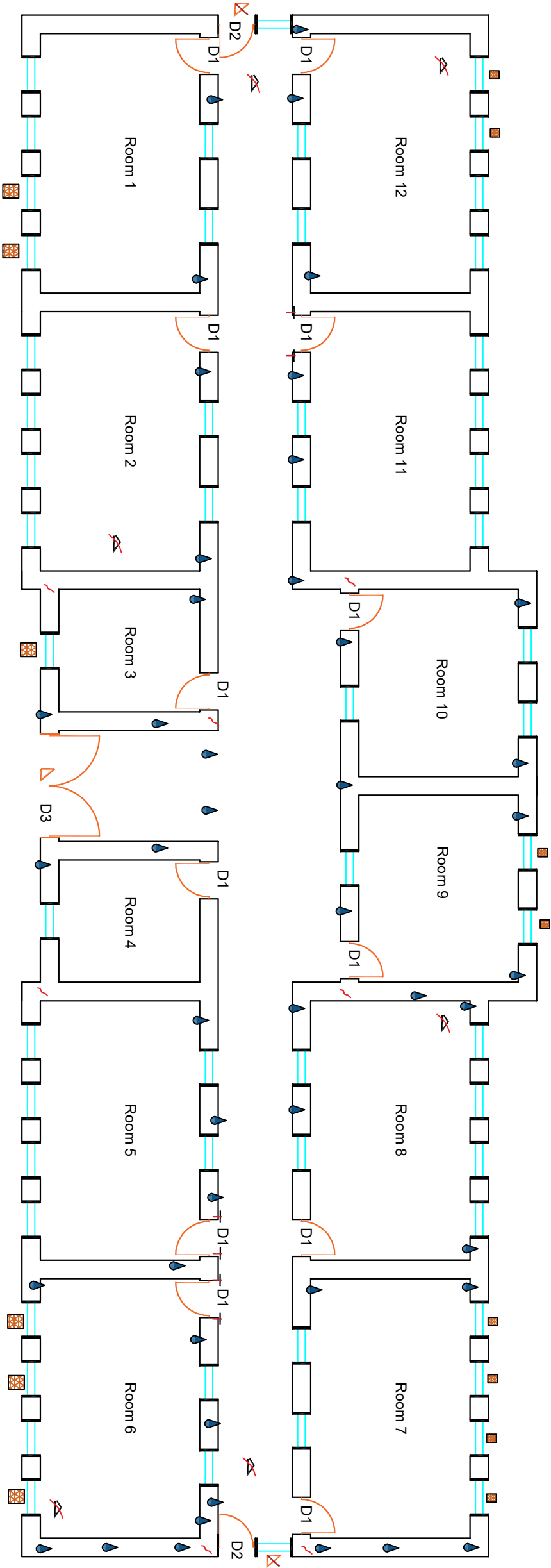
DRAWING BY	Mohammad Ali Eltaf
CHECKED BY	
APPROVED BY	

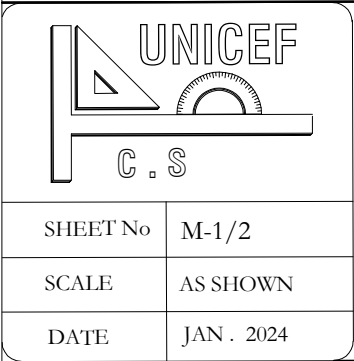
PROJECT EMPLOYER  
UNITED NATIONS CHILDREN'S FUND



construction section  
Renovation of Abinaw Mixed Secondary School  
All dimension are in cm

Damage Notation	
Sign	Description
	Broken Door
	Damaged Door
	Broken Window
	Moisture Prob
	St Crack
	Roof Spalling
	Spalling Plaster
	Ceiling Failure
	Floor Prob





TITLE : Site Plan	
DRAWING BY	Mohammad Ali Eltaf
CHECKED BY	
APPROVED BY	

Mohammad Ali Eltaf

\_\_\_\_\_

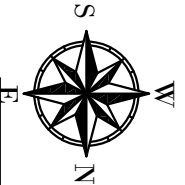
--

PROJECT EMPLOYER  
UNITED NATIONS CHILDREN'S FUND

construction section

Renovation of AbiNaw Mixed Secondary School

All dimension are in cm




## Boundary Wall

Abi Naw Mixed Secondary School

# School Garden

Primary road



C . S

SHEET No

M-1/2

SCALE

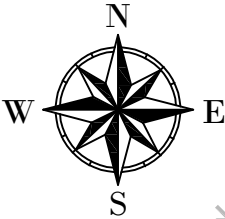
AS SHOWN

DATE

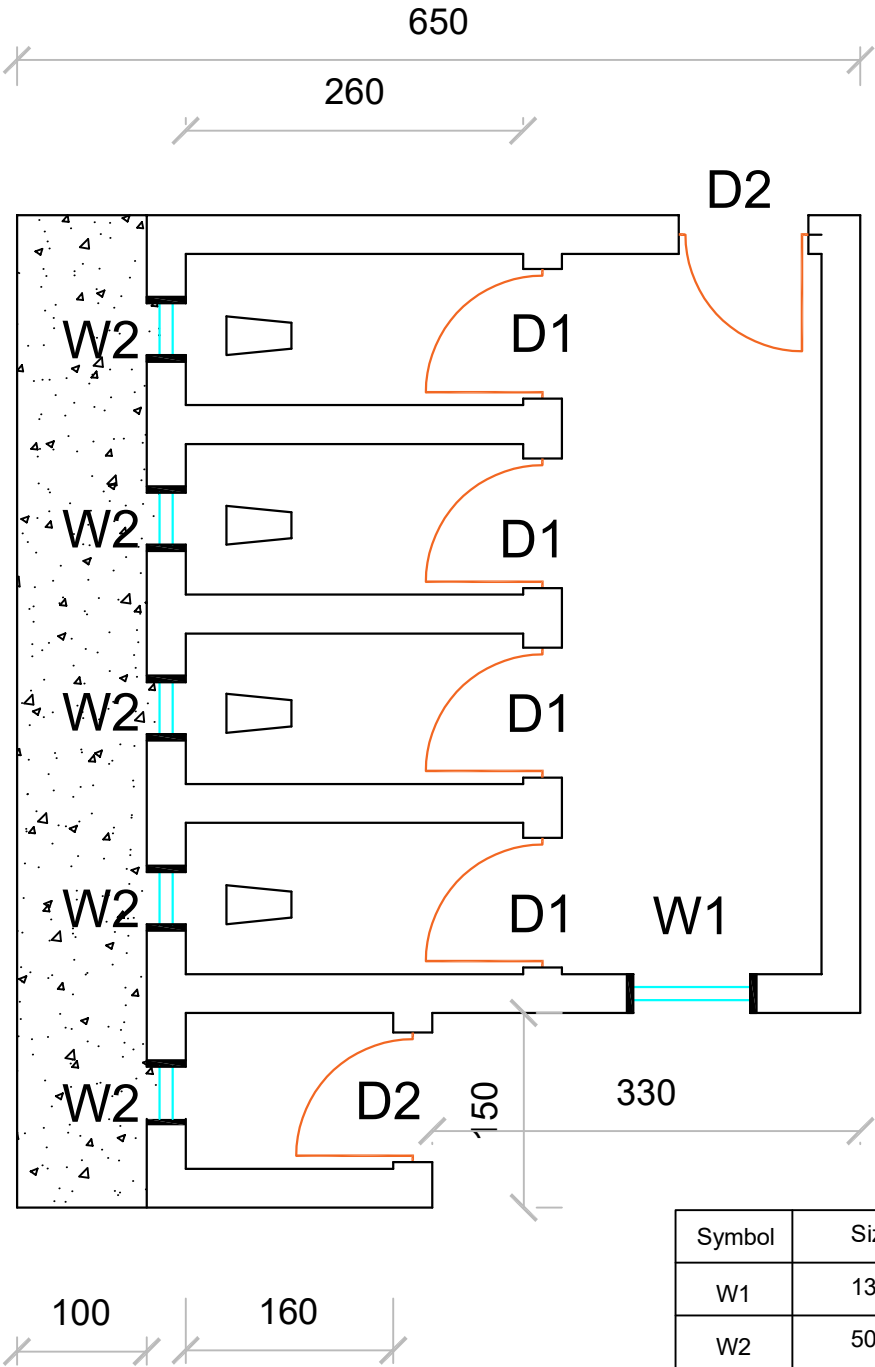
JAN . 2024

TITLE : Toilet Plan	
DRAWING BY	Mohammad Ali Eltaf
CHECKED BY	
APPROVED BY	

PROJECT EMPLOYER
UNITED NATIONS CHILDREN'S FUND
construction section
Renovation of AbiNaw Mixed Secondary School
All dimension are in cm



765



Symbol	Size (cm)
W1	130X170
W2	50X60
D1	70X220
D2	110X220

UNICEF

C.S

SHEET No

M-1/2

SCALE

AS SHOWN

DATE

FEB . 2024

TITLE : Doors and Windows Specifications

DRAWING BY

Mohammad Ali Eltaf

CHECKED BY

APPROVED BY

PROJECT EMPLOYER

UNITED NATIONS CHILDREN'S FUND

construction section

Renovation of AbiNaw Mixed Secondary School

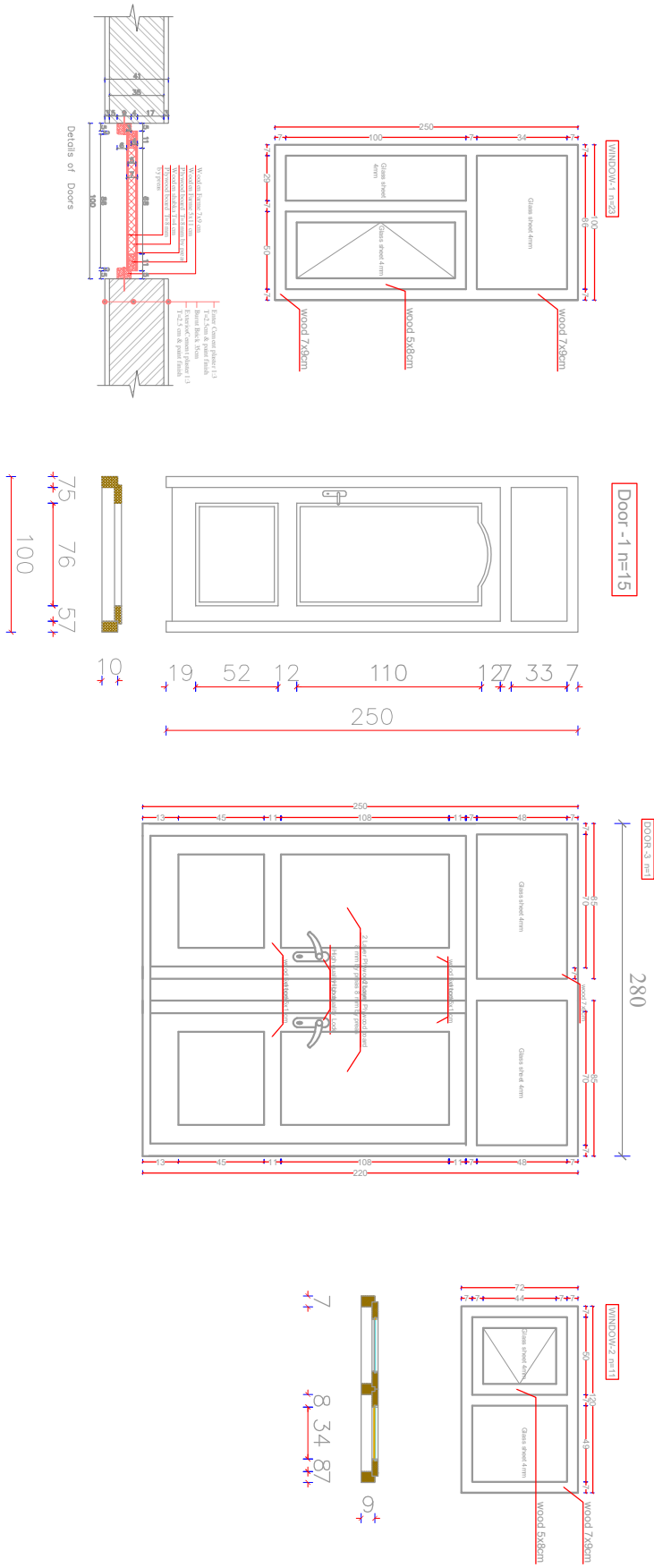
All dimension are in cm

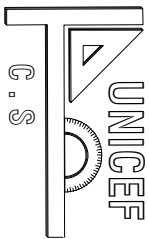
unicef



1

Details of Doors and Windows





TITLE : Roof details

DRAWING BY  
Mohammad Ali Elraf

CHECKED BY

APPROVED BY

SHEET No M-1/2

SCALE  
AS SHOWN

DATE  
Feb . 2024

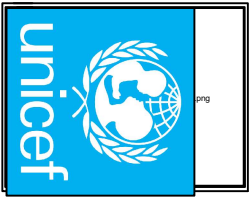
PROJECT EMPLOYER

UNITED NATIONS CHILDREN'S FUND

construction section

Renovation of Abinaw Mixed Secondary School

All dimension are in cm



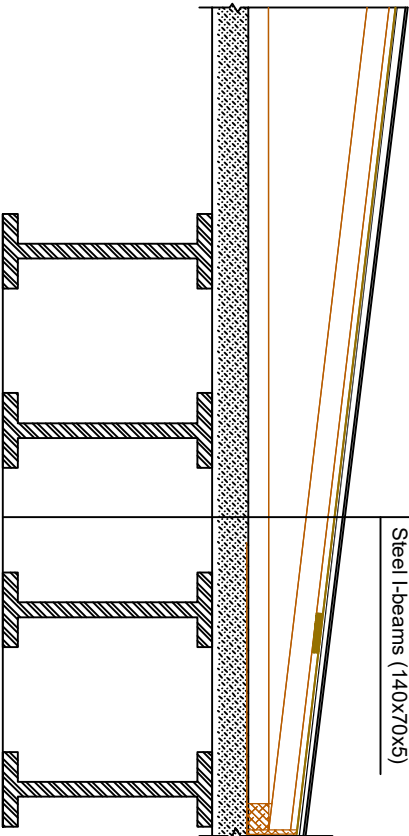
G.I. Sheet 24 Gauge

Wooden Truss

May layer (10 cm)

Wooden Boards (2 cm)

Steel I-beams (140x70x5)



Existed Roof Structure

ISOGAM (4mm)

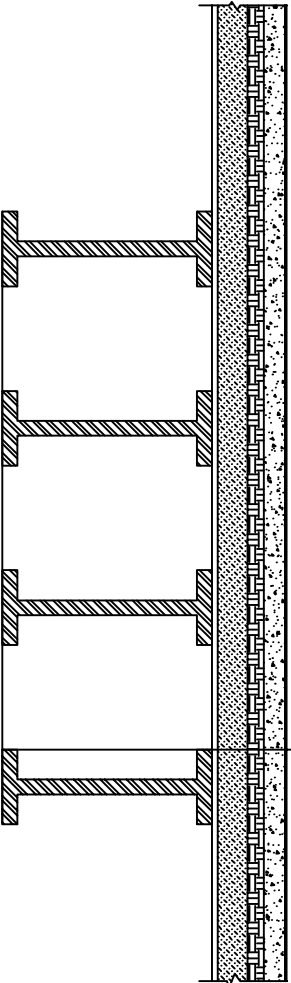
PCC (7 cm)

Soil (5cm)

Mud layer (10 cm)

Wooden Boards (2 cm)


Steel I-beams (140x70x5)



Details of Roof Structure

Proposed Roof Structure





SHEET No

M-1/2

SCALE

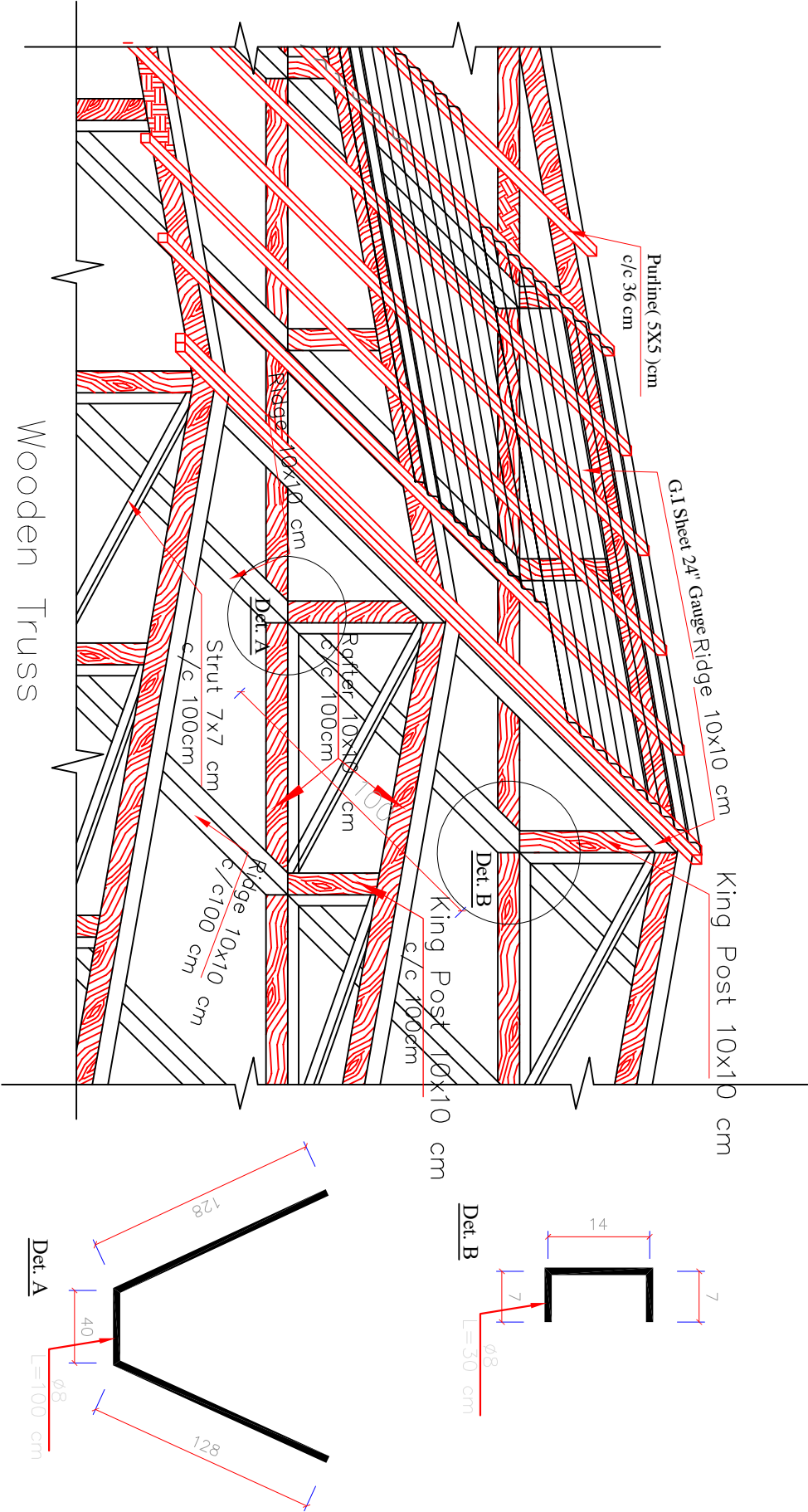
AS SHOWN

DATE

FEB . 2024

TITLE :    Wooden Truss Details	
DRAWING BY	Mohammad Ali Eltaf
CHECKED BY	
APPROVED BY	

PROJECT EMPLOYER
UNITED NATIONS CHILDREN'S FUND
construction section
Renovation of AbiNew Mixed Secondary School
All dimension are in cm





PROJECT EMPLOYER  
UNITED NATIONS CHILDREN'S FUND


construction section

Renovation of AbiNaw Mixed Secondary School

All dimension are in cm

TTITLE : Finish Floor Schedule

DRAWING BY	Mohammad Ali Eltaf
CHECKED BY	
APPROVED BY	



C . S

SHEET No	M-1/2
SCALE	AS SHOWN
DATE	FEB . 2024

ROOM FINISH SCHEDULE (AbiNaw Mixed Secondary School)										
	Wall		floor		ceiling		Windows and doors			Remark
Room #	Partial Plaster	Filling	3 coat painting	PCC	Filling	3 coat painting	adjustment	replacement	Glazing	Painting
1	7 SQM	Full Body (FB)	Full Body (FB)	Partially (3.01 SQM)	FB	FB	6 windows and 1 door	N/A	6 windows	6 windows and 1 door
2	7 SQM	FB	FB	Partially (3.01 SQM)	FB	FB	6 windows and 1 door	N/A	6 windows	6 windows and 1 door
3	4.5 SQM	FB	FB	Partially (1.25 SQM)	FB	FB	1 windows and 1 door	N/A	1 windows	1 windows and 1 door
4	4.5 SQM	FB	FB	Partially (1.25 SQM)	FB	FB	1 windows and 1 door	N/A	1 windows	1 windows and 1 door
5	4.9 SQM	FB	FB	Partially (3.01 SQM)	FB	FB	3 windows and 1 door	N/A	3 windows	3 windows and 1 door
6	4.9 SQM	FB	FB	Partially (3.01 SQM)	FB	FB	6 windows and 1 door	N/A	6 windows	6 windows and 1 door
7	7 SQM	FB	FB	Partially (3.01 SQM)	FB	FB	6 windows and 1 door	N/A	6 windows	6 windows and 1 door
8	7 SQM	FB	FB	Partially (3.01 SQM)	FB	FB	6 windows and 1 door	N/A	6 windows	6 windows and 1 door
9	1.23 SQM FB		FB	Partially (2.2 SQM)	FB	FB	3 windows and 1 door	N/A	3 windows	3 windows and 1 door
10	1.23 SQM FB		FB	Partially (2.2 SQM)	FB	FB	3 windows and 1 door	N/A	3 windows	3 windows and 1 door
11	7 SQM	FB	FB	Partially (3.01 SQM)	FB	FB	6 windows and 1 door	N/A	6 windows	6 windows and 1 door
12	7 SQM	FB	FB	Partially (3.01 SQM)	FB	FB	6 windows and 1 door	N/A	6 windows	6 windows and 1 door