



Project Name: Lokar Girls Secondary School Assessment

Project Employer: UNITED NATIONS CHILDREN'S
FUND

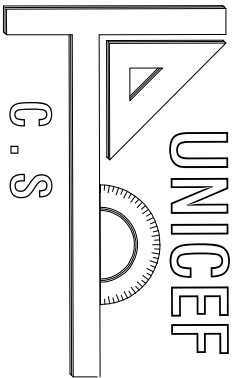
Prepared by: Construction Section

Drawing Sheets

Date: 01 February, 2024



Site Plan



SHEET No

M-1/2

SCALE

AS SHOWN

DATE

Feb . 2024

TITLE : Floor Plan

DRAWING BY

Mohammad Ali Eltaf

CHECKED BY

APPROVED BY

PROJECT EMPLOYER

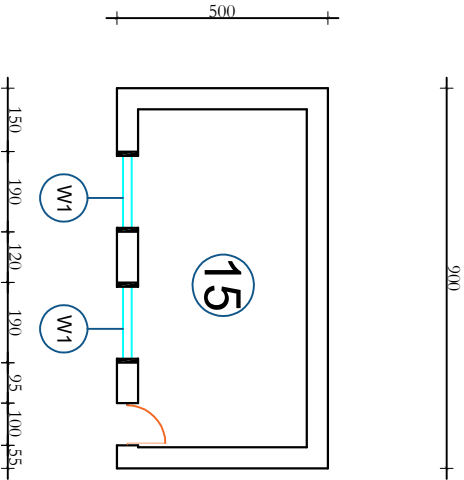
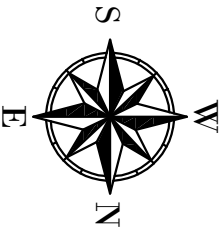
UNITED NATIONS CHILDREN'S FUND

construction section

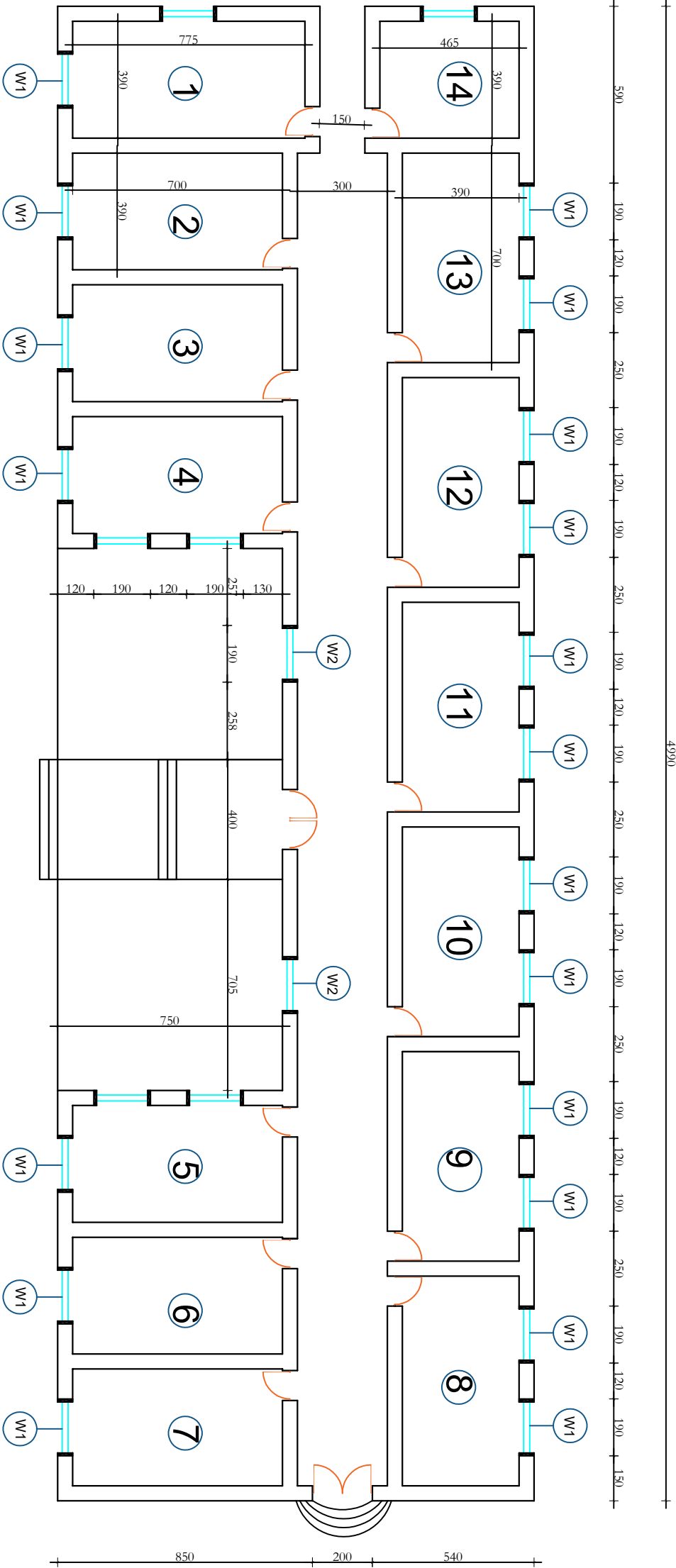
Renovation of Lokar Girls Secondary School

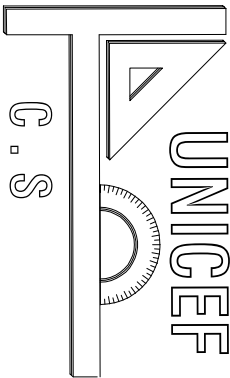
All dimension are in cm

C:\Users\MIR AFGHAN\Downloads\images.png



Door/Window	#	Sizes
D1	8	100 x250 cm
D2	1	150 x250 cm
D3	1	200 x250 cm
W1	25	190 x200 cm
W2	10	250 X200 cm
H		314 cm





SHEET No

M-1/2

SCALE

AS SHOWN

DATE

Feb . 2024

TITLE : Damage Notation Plan

DRAWING BY

Mohammad Ali Eltaf

CHECKED BY

APPROVED BY

PROJECT EMPLOYER

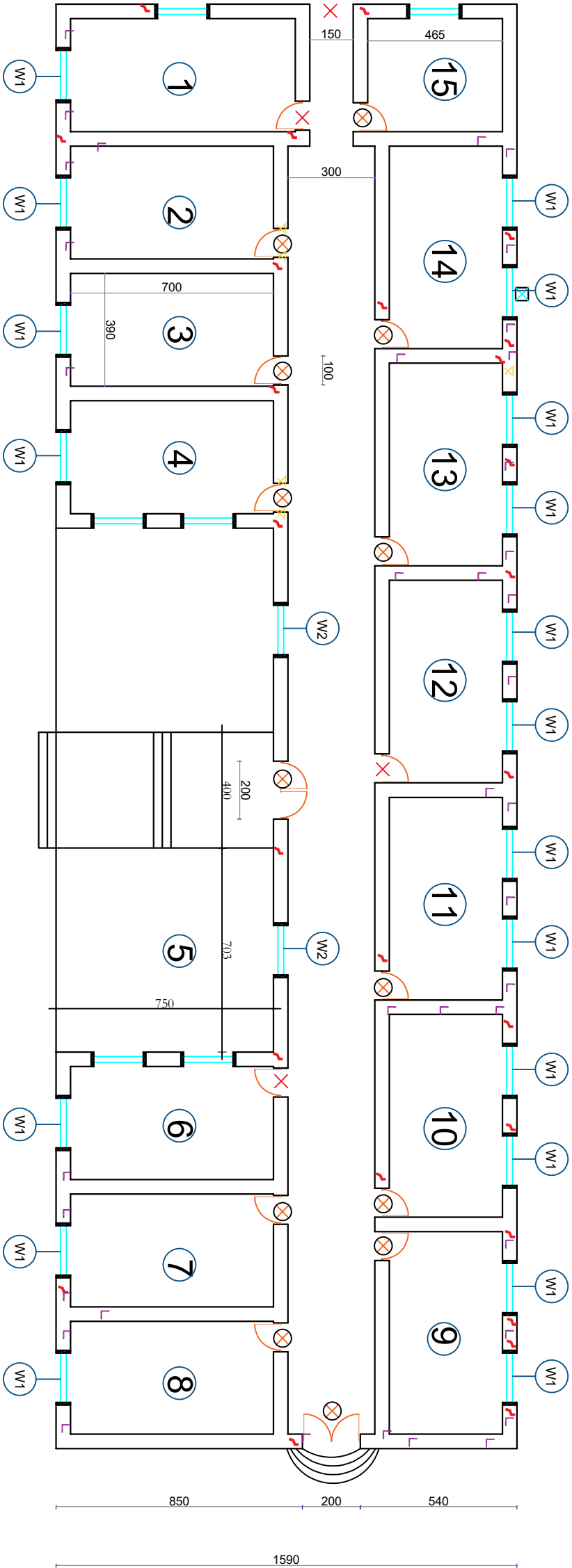
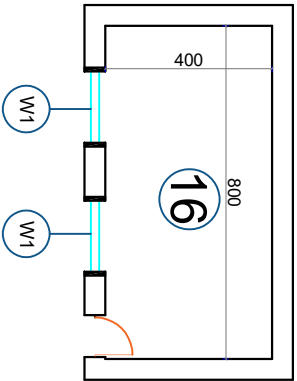
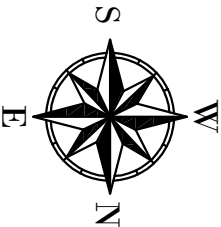
UNITED NATIONS CHILDREN'S FUND

construction section

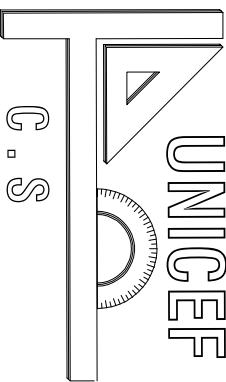
Renovation of Lokar Girls Secondary School

All dimension are in cm

C:\Users\MIR AFGHAN\Downloads\images.png



Damage Legend	
Sign	Description
	No Door
	Damaged Door
	Broken glasses
	Structural Crack
	Moisture Problem
	Plaster Problem



C. S

SHEET No

M-1/2

SCALE

AS SHOWN

DATE

Feb . 2024

TITLE : Layout Plan

DRAWING BY

Mohammad Ali Eltaf

CHECKED BY

APPROVED BY


PROJECT EMPLOYER

UNITED NATIONS CHILDREN'S FUND

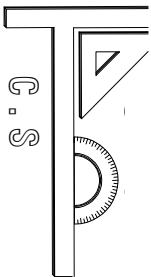
construction section

Renovation of Lokar Girls Secondary School

All dimension are in cm



Legend	
#	Description
01	Latrine
02	Main Side Door
03	Main Building
04	Flowerpot
05	Main door
06	Staircase
07	Administration
08	Laboratory
09	Main Side Door
10	Book Store



UNITED NATIONS CHILDREN'S FUND

DRAWING BY
Mohammad Ali Elraf

CHECKED BY

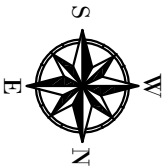
APPROVED BY

UNITED NATIONS CHILDREN'S FUND
construction section

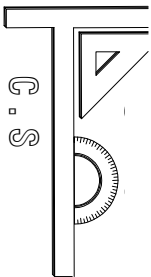
Renovation of Lokar Girls Secondary School

All dimension are in cm

SHEET No		M-1/2
SCALE		AS SHOWN
DATE		Feb . 2024
DRAWING BY		Mohammad Ali Elraf
CHECKED BY		
APPROVED BY		



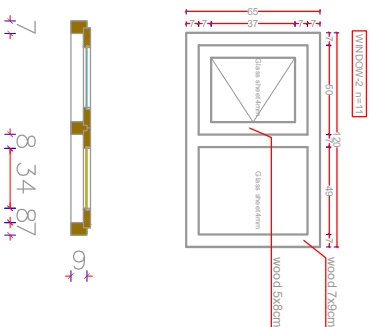
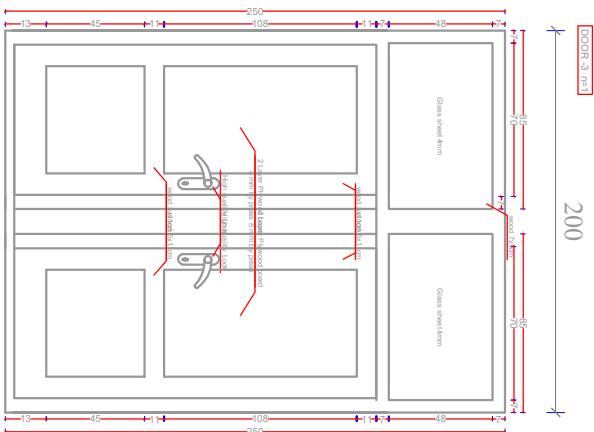
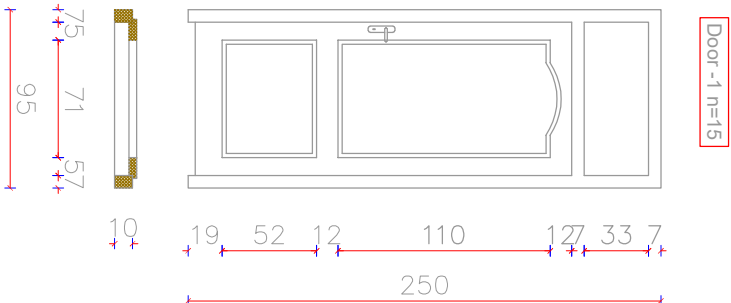
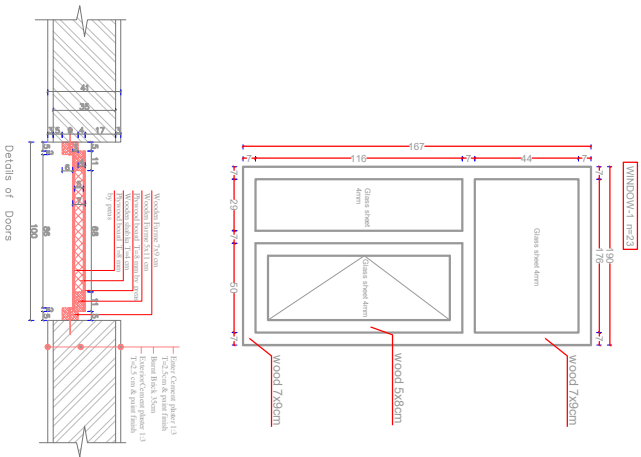
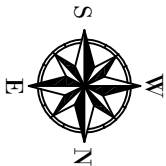
ROOM FINISH SCHEDULE (Lokar Girls Secondary School)										
Floor#	Wall			floor	ceiling	Windows and doors		Remark		
Room #	Partial Plaster	Filling	3 coat painting	PCC	Filling	3 coat painting	adjustment	replacement Glazing	2 windows and 0 door	
1	13.7 SQM	Full Body (FB)	Full Body (FB)	Partially (0.9 SQM)	FB	FB	2 windows and 0 door	1 door	2 windows and 1 door	
2	12.8 SQM FB		FB	Partially (0.81 SQM)	FB	FB	1 windows and 1 door	N/A	1 windows and 1 door	
3	12.8 SQM FB		FB	Partially (0.81 SQM)	FB	FB	1 windows and 1 door	N/A	3 windows and 1 door	
4	12.8 SQM FB		FB	Partially (0.81 SQM)	FB	FB	3 windows and 1 door	N/A	3 windows and 1 door	
5	12.8 SQM FB		FB	Partially (0.81 SQM)	FB	FB	3 windows and 1 door	N/A	1 windows and 0 door	
6	12.8 SQM FB		FB	Partially (0.81 SQM)	FB	FB	1 windows and 0 door	1 door	1 windows and 1 door	
7	12.8 SQM FB		FB	Partially (0.81 SQM)	FB	FB	1 windows and 1 door	N/A	2 windows and 1 door	
8	15.7 SQM FB		FB	Partially (0.81 SQM)	FB	FB	2 windows and 1 door	N/A	2 windows and 1 door	
9	15.7 SQM FB		FB	Partially (0.81 SQM)	FB	FB	2 windows and 1 door	N/A	2 windows and 1 door	
10	15.7 SQM FB		FB	Partially (0.81 SQM)	FB	FB	2 windows and 1 door	N/A	2 windows and 1 door	
11	15.7 SQM FB		FB	Partially (0.81 SQM)	FB	FB	2 windows and 1 door	N/A	2 windows and 1 door	
12	15.7 SQM FB		FB	Partially (0.81 SQM)	FB	FB	2 window and 1 door	N/A	2 window and 1 door	
13	15.7 SQM FB		FB	Partially (0.81 SQM)	FB	FB	2 window and 1 door	N/A	2 window and 1 door	
14	13.4 SQM FB		FB	Partially (0.54 SQM)	FB	FB	1 window and 1 door	N/A	1 window and 1 door	
15	0 SQM	-	-	0	0	0	0	0	0	

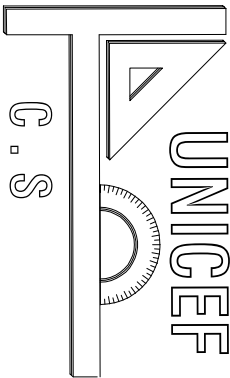


SHEET No		M-1/2
SCALE		AS SHOWN
DATE		Feb . 2024

DRAWING BY		Mohammad Ali Elraf
CHECKED BY		
APPROVED BY		

UNITED NATIONS CHILDREN'S FUND	
construction section	
Renovation of Lokar Girls Secondary School	
All dimension are in cm	





SHEET No	M-1/2
SCALE	AS SHOWN
DATE	Feb . 2024

TTITLE : Site Plan

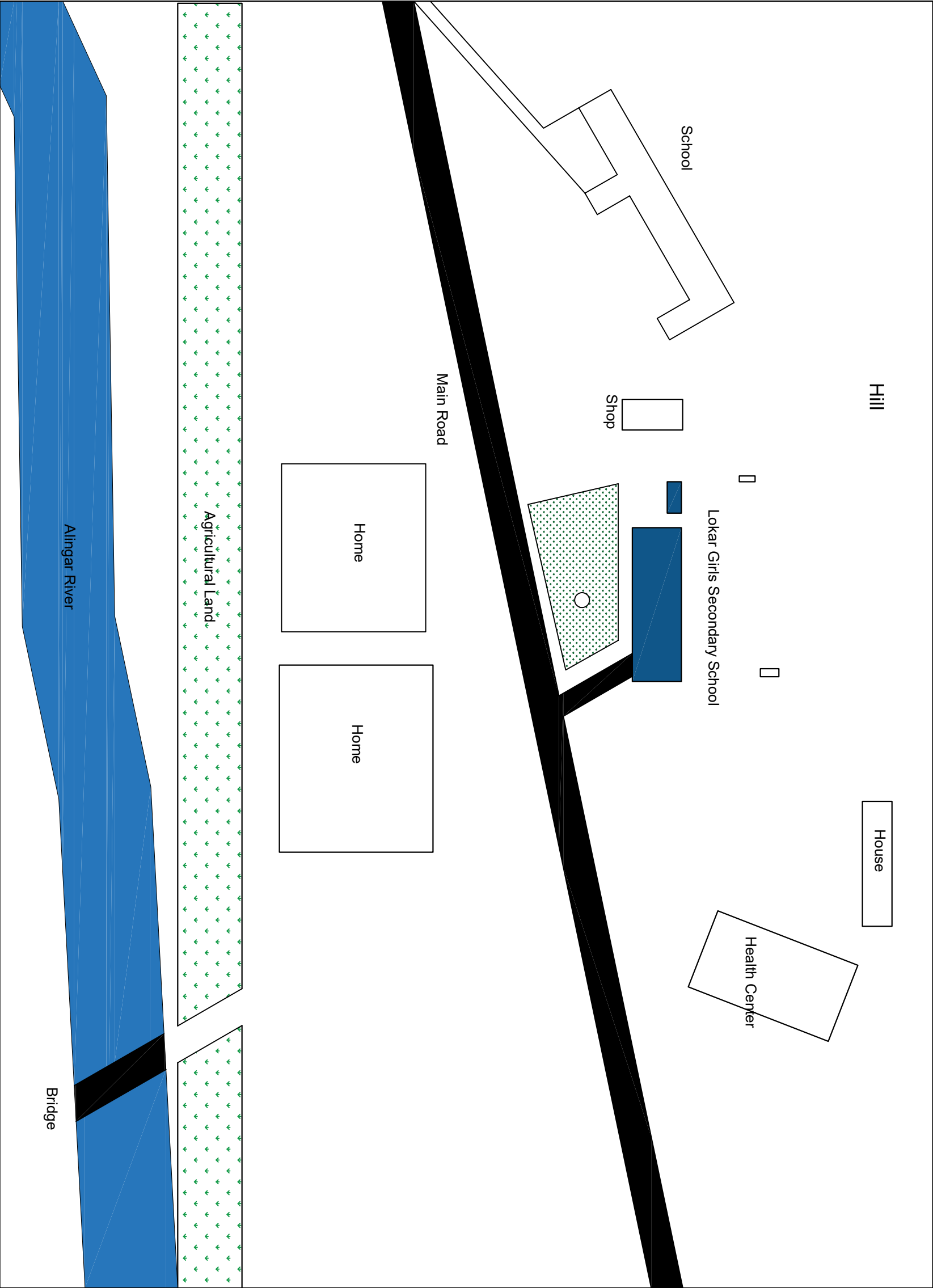
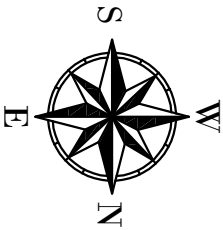
DRAWING BY	Mohammad Ali Eltaf
CHECKED BY	
APPROVED BY	

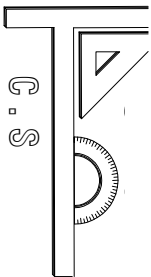
PROJECT EMPLOYER
UNITED NATIONS CHILDREN'S FUND

construction section

Renovation of Lokar Girls Secondary School

All dimension are in cm





THESE DAYS ARE OPENING UP

DRAWING BY

Mohammad Ali Eltaf

SHEET No M-1/2

CHECKED BY

SCALE AS SHOWN

UNITED NATIONS CHILDREN'S FUND
construction section
Renovation of Lokar Girls Secondary School

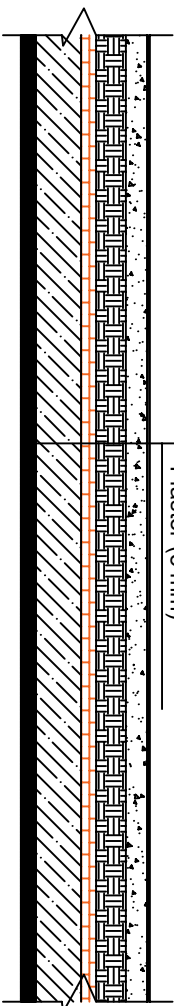
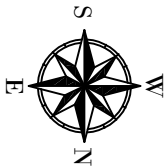
Renovation of Lokar Girls Secondary School

DATE	Feb. 2024
------	-----------

APPROVED BY

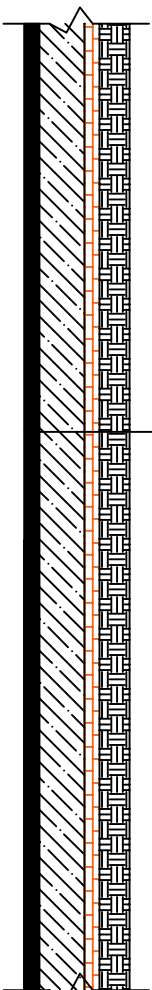
All dimension are in cm

C:\Users\MIR AFGHAN\Downloads\images.png



Proposed Roof Layers

ISOGAM (4mm)
PCC (7 cm)
Mud layer (10 cm)
Burnt Bricks (5 cm)
RCC Slab (15 cm)
Plaster (5 mm)

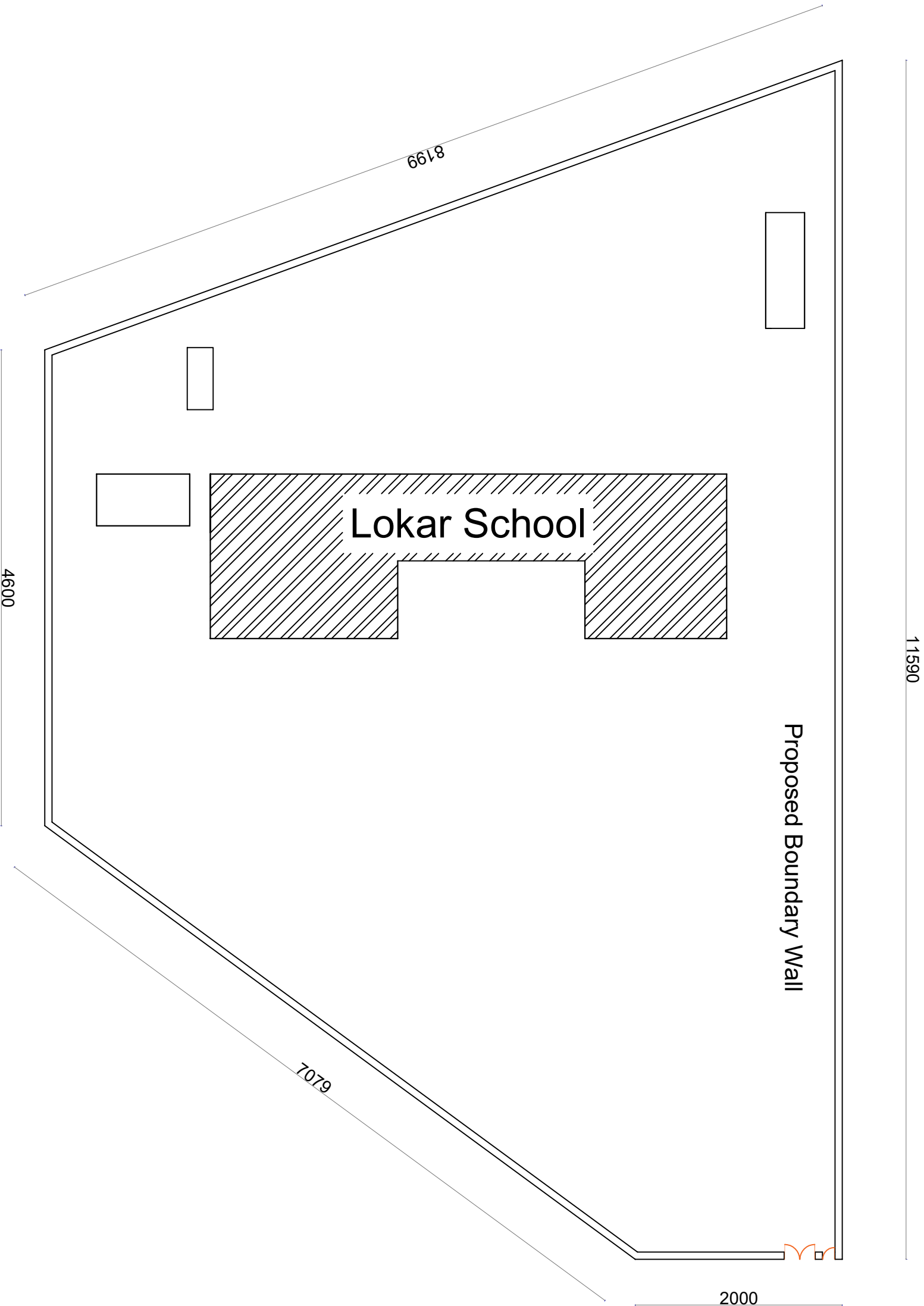
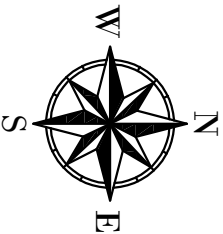


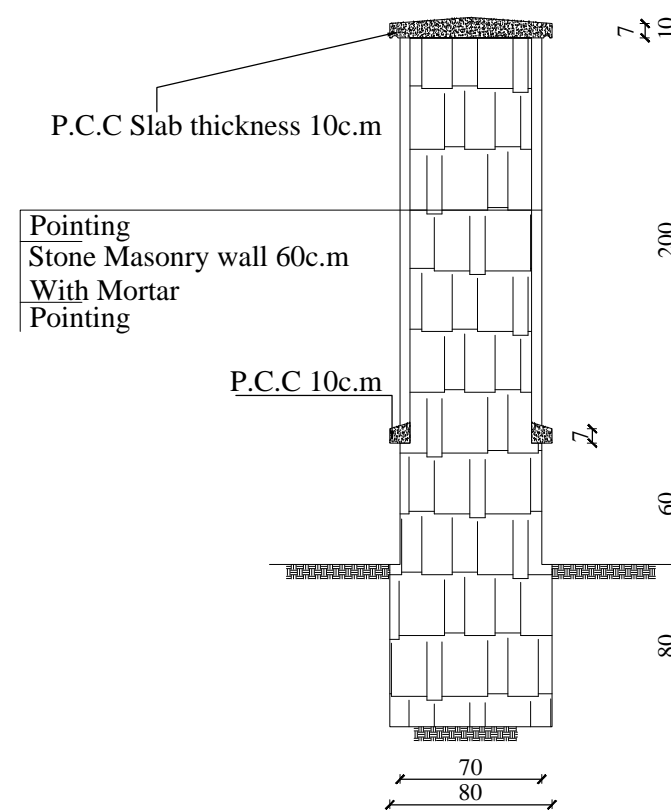
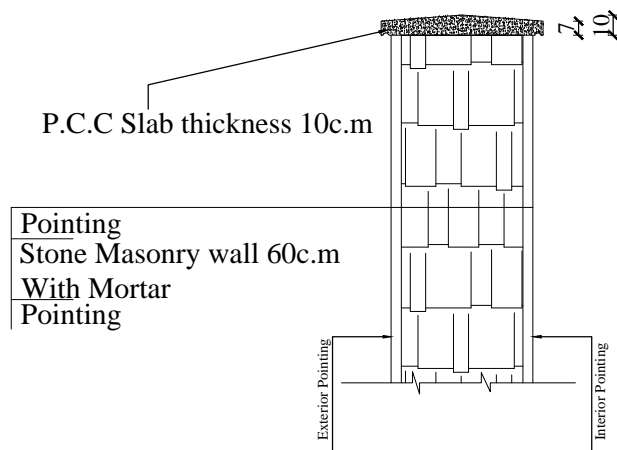
Existing Roof Layers

<div><div><div>UNICEF</div><div>C . S</div></div></div>		
SHEET No	M-1/2	
SCALE	AS SHOWN	
DATE	Feb . 2024	

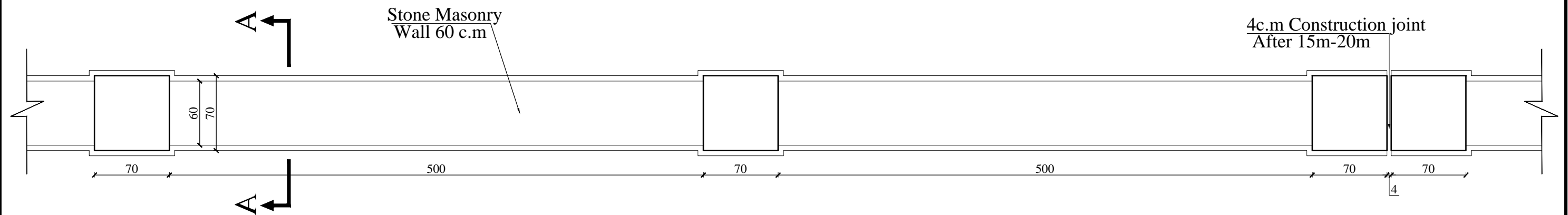
TITLE : Proposed Boundary Wall	
DRAWING BY	Mohammad Ali Eltaf
CHECKED BY	
APPROVED BY	

PROJECT EMPLOYER	
UNITED NATIONS CHILDREN'S FUND	
construction section	
Renovation of Lokar Girls Secondary School	
All dimension are in cm	





Section A-A



L=.....



MINISTRY OF EDUCATION
DEPARTMENT OF CONSTRUCTION



STANDARD SCHOOL DESIGN
IN AFGHANISTAN

ARCHITECT/DESIGN	AH.MAIWAND.M	APPROVED-DOC/MOE	ENG.AB.MOMEN "RAAD"
CHECKED BY	ENG.SAID.RASOOL "AFGHANI"	SCALE	AS SHOWN (A3)
TECH- APPROVED BY	ENG.AB.MATIN MAQOL	DATE	5.12.2012

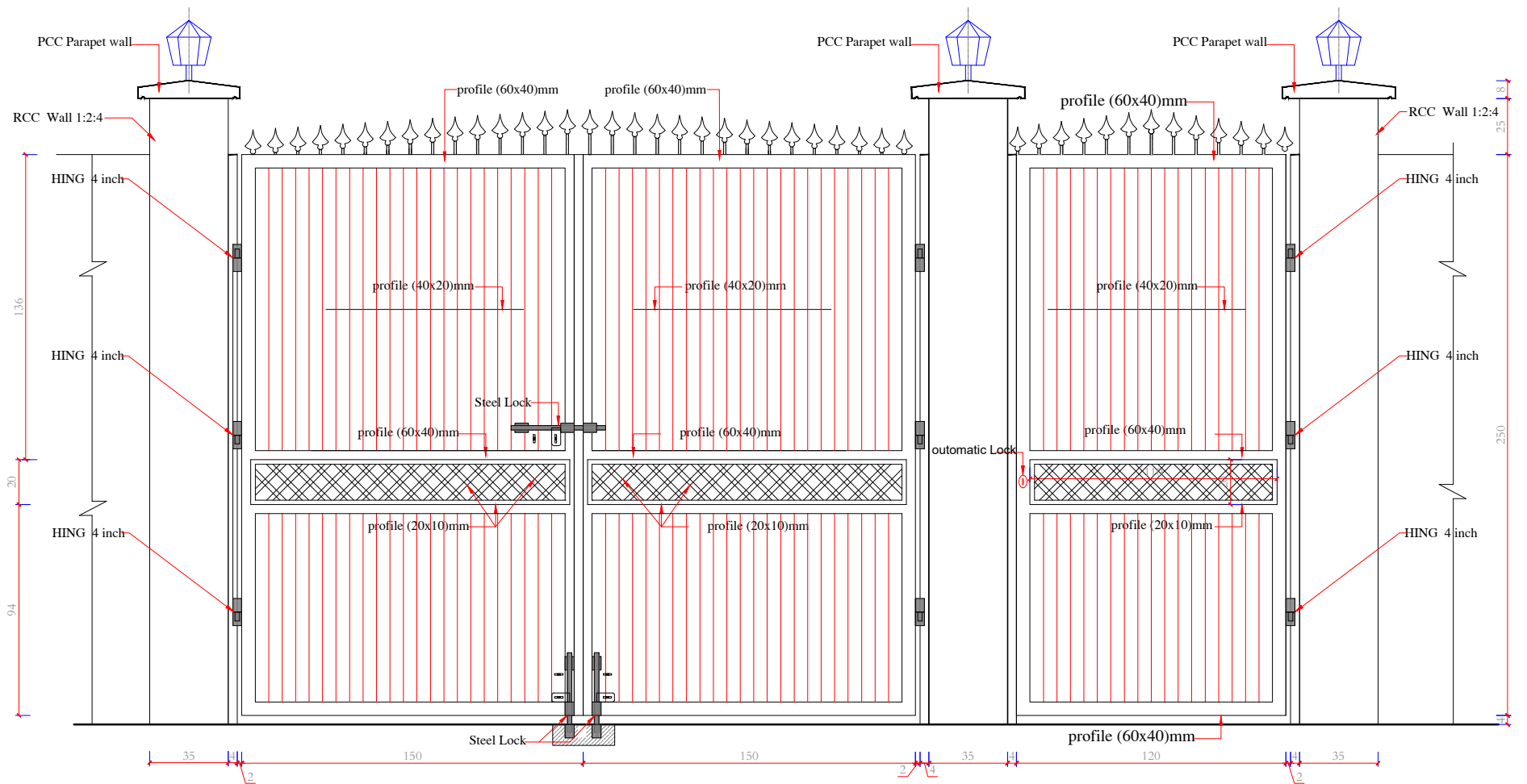
DRAWING NO	ARCHITECTURAL
SHEET NO	1 1

PROJECT NAME

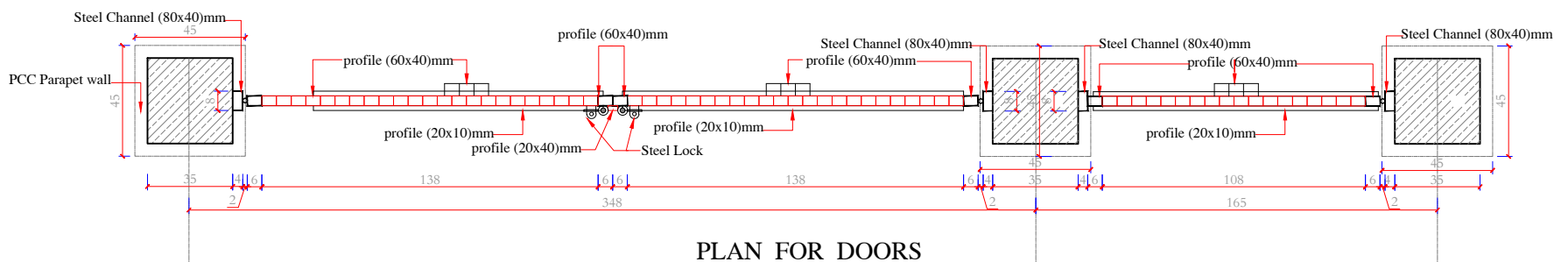
DRAWING TITLE

STONE BOUNDARY WALL

PLAN, SECTION & ELEVATION



FRONT ELEVATION



PLAN FOR DOORS
DOOR FOR CARS (300X250)cm
DOOR FOR STUDENT (120X250)cm



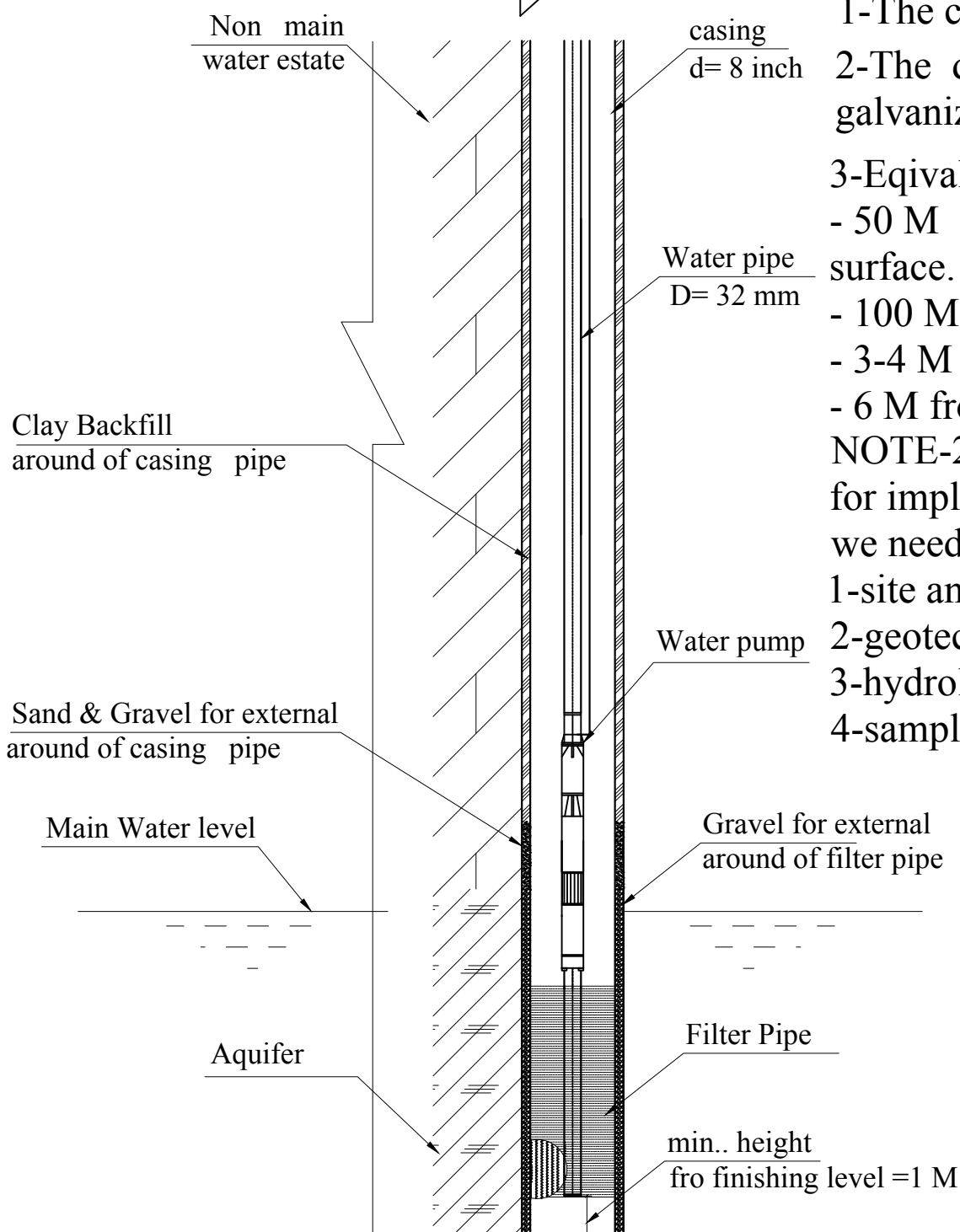
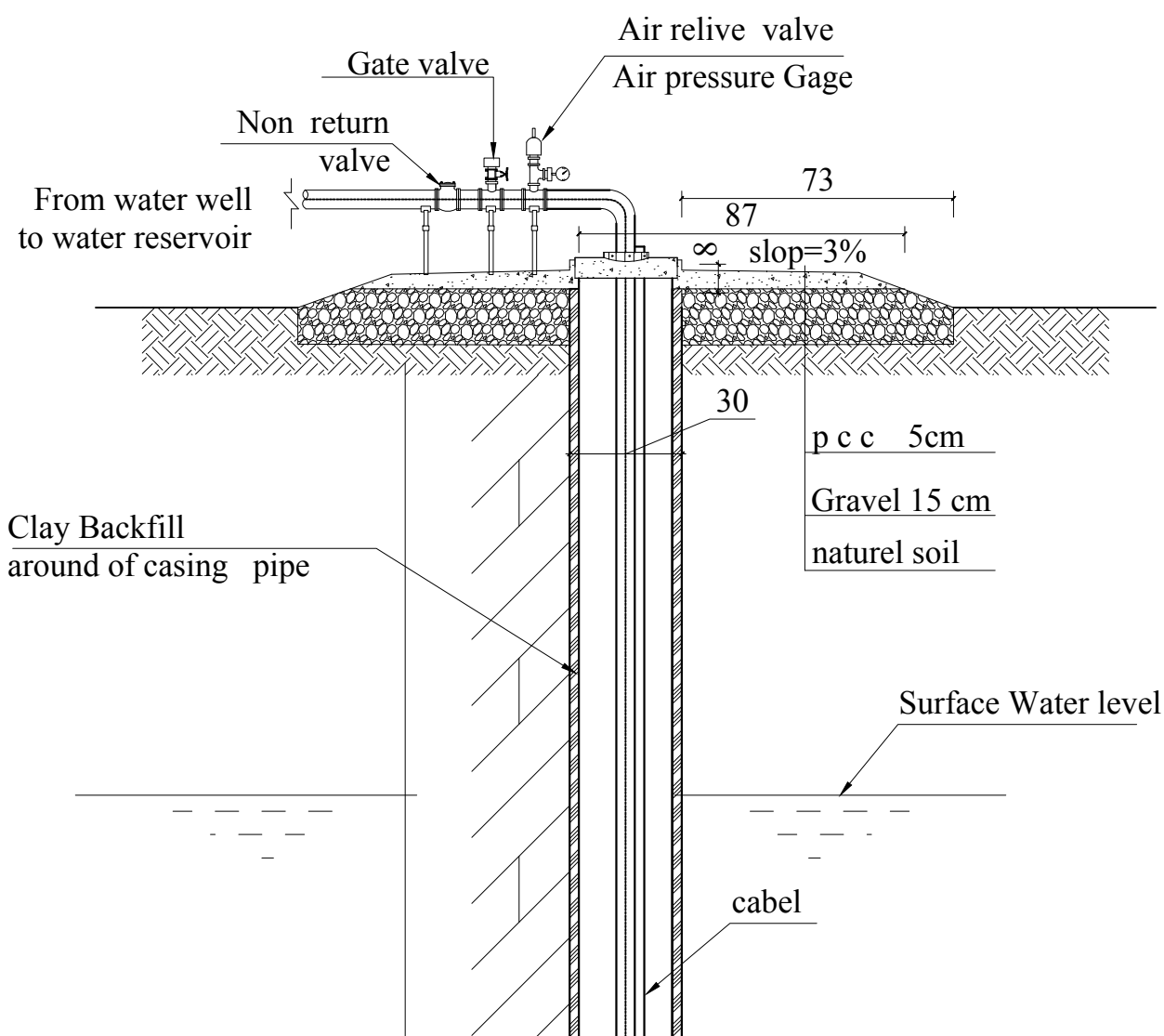
MINISTRY OF EDUCATION
DEPARTMENT OF CONTRACTION



STANDARD SCHOOL DESIGN
IN AFGHANISTAN

ARCHITECT/DESIGN	KHALILULLAH Y.Z	APPROVED/Doc/Moe	ENG.AB.MOMIN RAAD	DRAWING No	ARCHITECTURE
CHECKED BY	ENG.S.RASUOL AFGHANI	SCALE	AS SHOWN (A/S)	SHEET No	
TECH- APPROVED BY	ENG.AB.MATIN MAQOM	DATE	12.12.2012		

PROJECT NAME	MOE SCHOOLS DOOR
DRAWING TITLE	VIEW AND PLAN



- 1-The casing material will be PVC Steel pipe
 - 2-The delivery pipe material will be PVC or galvanized Steel
 - 3-Equivalent imperial distances the well must be :
 - 50 M from sewage effluent discharge the ground surface.
 - 100 M -from a sewage lagoon.
 - 3-4 M from existing buildings.
 - 6 M from the road and public highway.
- NOTE-2:
for implementation & accomplishment of project ,
we need to the following investigation to be done :
- 1-site and environmental investigations.
 - 2-geotechnical investigation.
 - 3-hydrological investigation.
 - 4-sampling.

DRILL WELL.



Ministry of Rural
Rehabilitation and
Development
WatSIP

Ministry of Education
Department of
construction



STANDARD SCHOOL
DESIGN
IN AFGHANISTAN

WATER SUPPLY /
DESIGN

Eng. Habibullah
CHECKED BY
ENG. M. RAHIM

REVIEWED BY
CHECKED BY
APPROVED BY

MOE/ISD
MOE/ISD
MOE/ISD

SHEET NO.
AS SHOWN (A3)
DATE: May 2020

WATER SUPPLY
PROJECT NAME
PROJECT TYPE & DRAWING
TITLE

PROJECT NAME
PROJECT TYPE & DRAWING
TITLE

DRILL WELL.
12 Inch X 100 meter bore well