




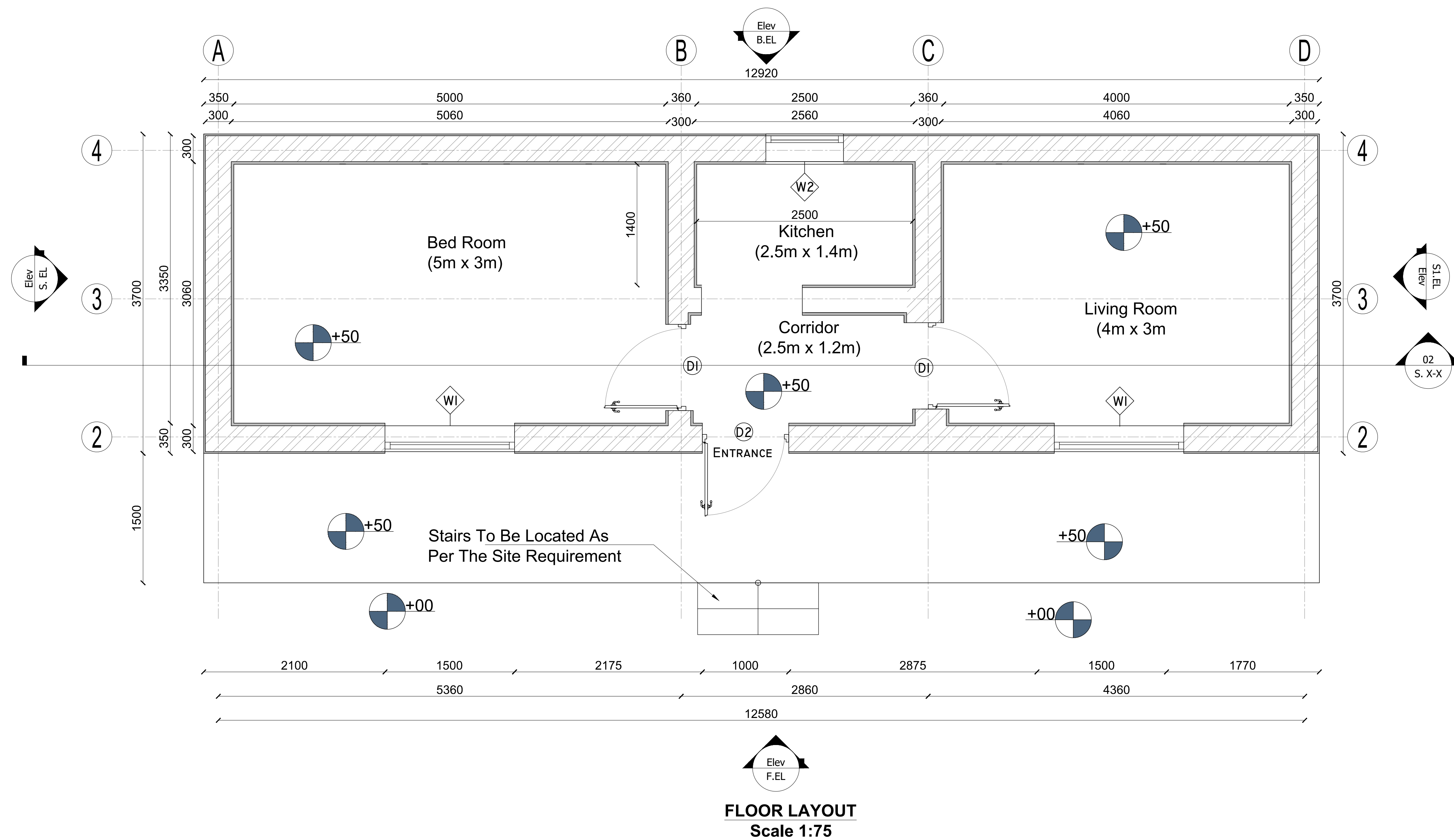
United Nations High Commissioner for Refugees

TWO ROOMED SHELTER Design Package for Herat Office (Farah Province)

2024 DESIGNS

Osewe D.

| | | | | | | | | |
|---|------------------|--------------------|--|-----|----------------------------|------------|---|---|
|  United Nations High Commissioner for Refugees | Dwg Modified By: | Field Office Herat | | No. | Submission Description: | Date: | AVERAGE SIZED FAMILY SHELTER PERMANENT SHELTER | Sheet Reference Number A-000 |
| | Checked By: | Field Office Herat | | | Modification | 15/01/2024 | | |
| | | | | | | | | |
| | Approved by: | | | | | | | |
| | | | | | | | Permanent Shelter Drawings | |



United Nations High Commissioner for Refugees

| | | |
|------------------|--------------------|--|
| Dwg Modified By: | Field Office Herat | |
| Checked By: | Field Office Herat | |
| Approved by: | | |

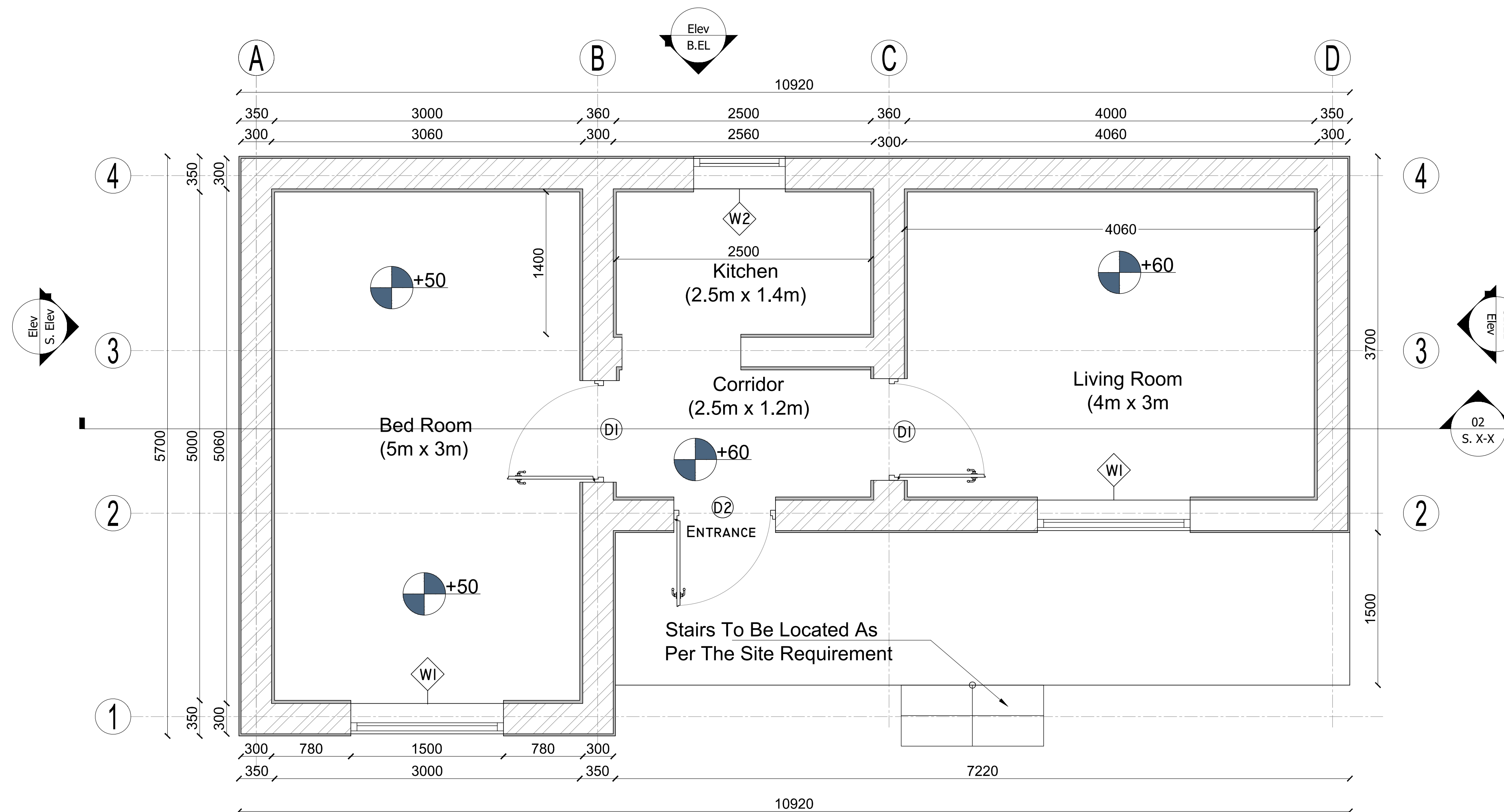
| No. | Submission Description: | Date: |
|-----|-------------------------|------------|
| | Modification | 15/01/2024 |
| | | |
| | | |
| | | |
| | | |

AVERAGE SIZED FAMILY SHELTER
PERMANENT SHELTER

Permanent Shelter Farah Drawings

Sheet
Reference
Number

A-101



FLOOR LAYOUT
Scale 1:75



United Nations High Commissioner for Refugees

| | | |
|------------------|--------------------|--|
| Dwg Modified By: | Field Office Herat | |
| Checked By: | Field Office Herat | |
| Approved by: | | |

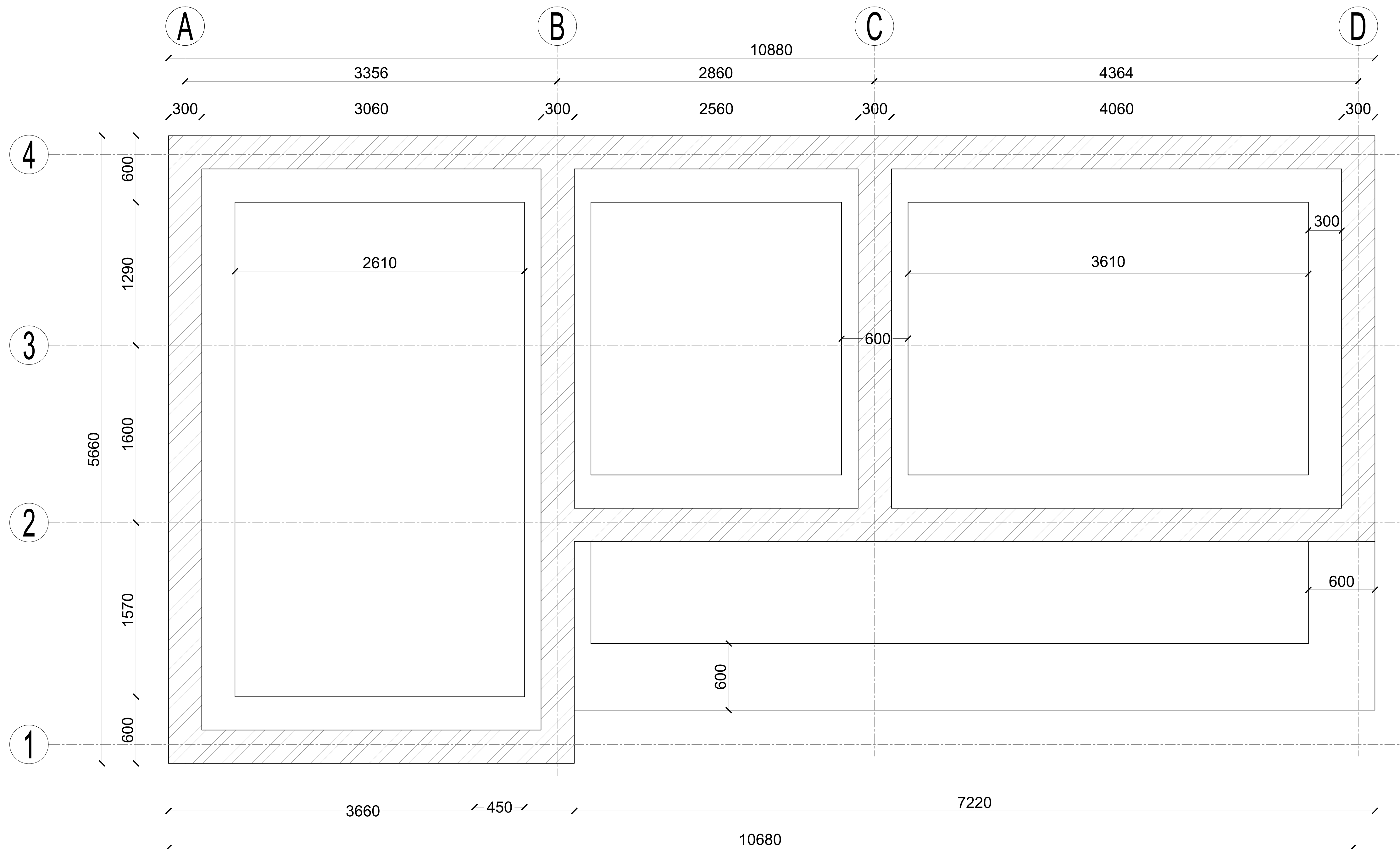
| No. | Submission Description: | Date: |
|-----|-------------------------|------------|
| | Modification | 15/01/2024 |
| | | |
| | | |
| | | |
| | | |

AVERAGE SIZED FAMILY SHELTER
PERMANENT SHELTER

Permanent Shelter Farah Drawings

Sheet
Reference
Number

A-101B



FOUNDATION LAYOUT
Scale 1:75



United Nations High Commissioner for
Refugees

| | | |
|------------------|--------------------|--|
| Dwg Modified By: | Field Office Herat | |
| Checked By: | Field Office Herat | |
| Approved by: | | |

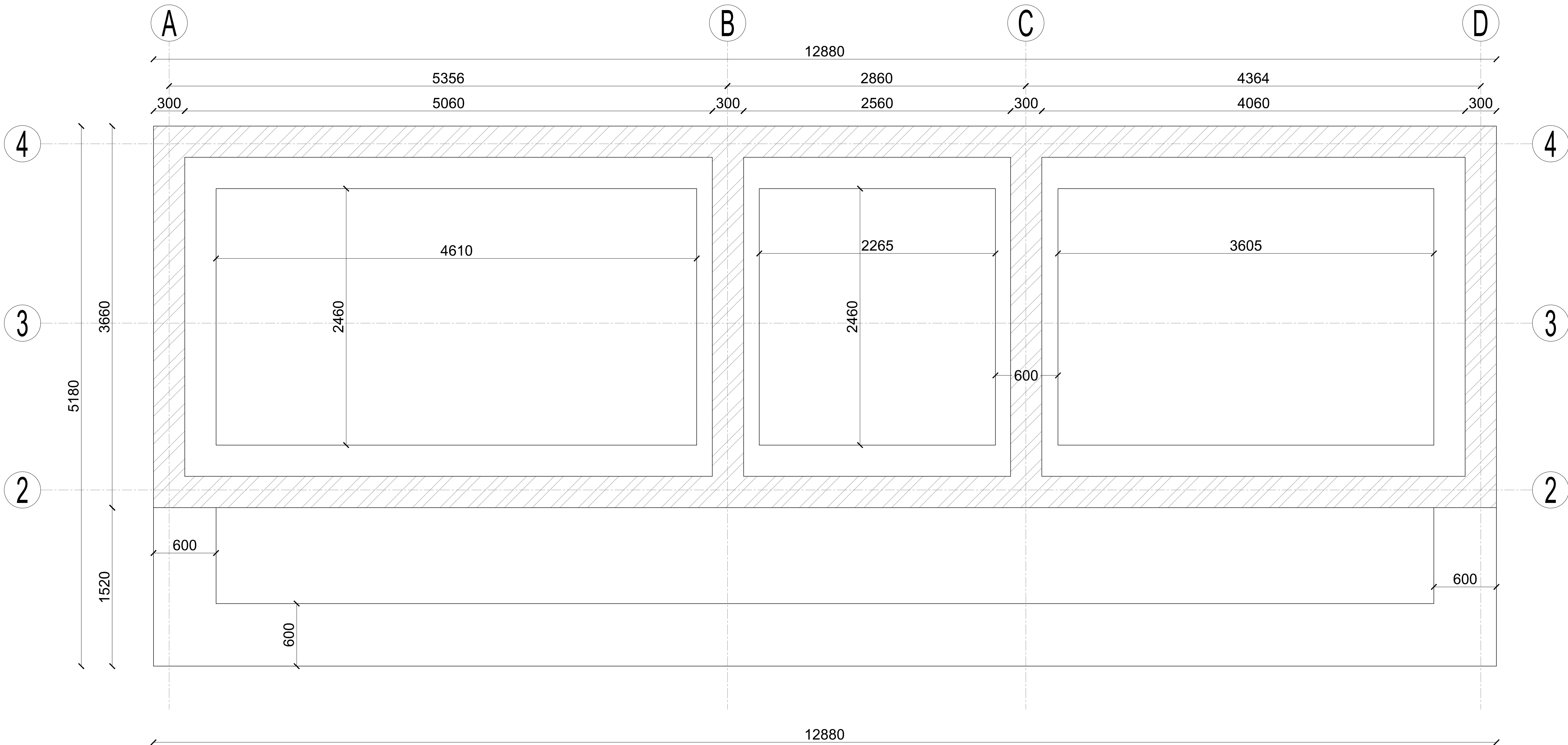
| | | |
|-----|-------------------------|------------|
| No. | Submission Description: | Date: |
| | Modification | 15/01/2024 |
| | | |
| | | |
| | | |
| | | |

AVERAGE SIZED FAMILY SHELTER
PERMANENT SHELTER

Permanent Shelter Farah Drawings

Sheet
Reference
Number

A-102



FOUNDATION LAYOUT
Scale 1:75



United Nations High Commissioner for
Refugees

| | | |
|------------------|--------------------|--|
| Dwg Modified By: | Field Office Herat | |
| Checked By: | Field Office Herat | |
| Approved by: | | |

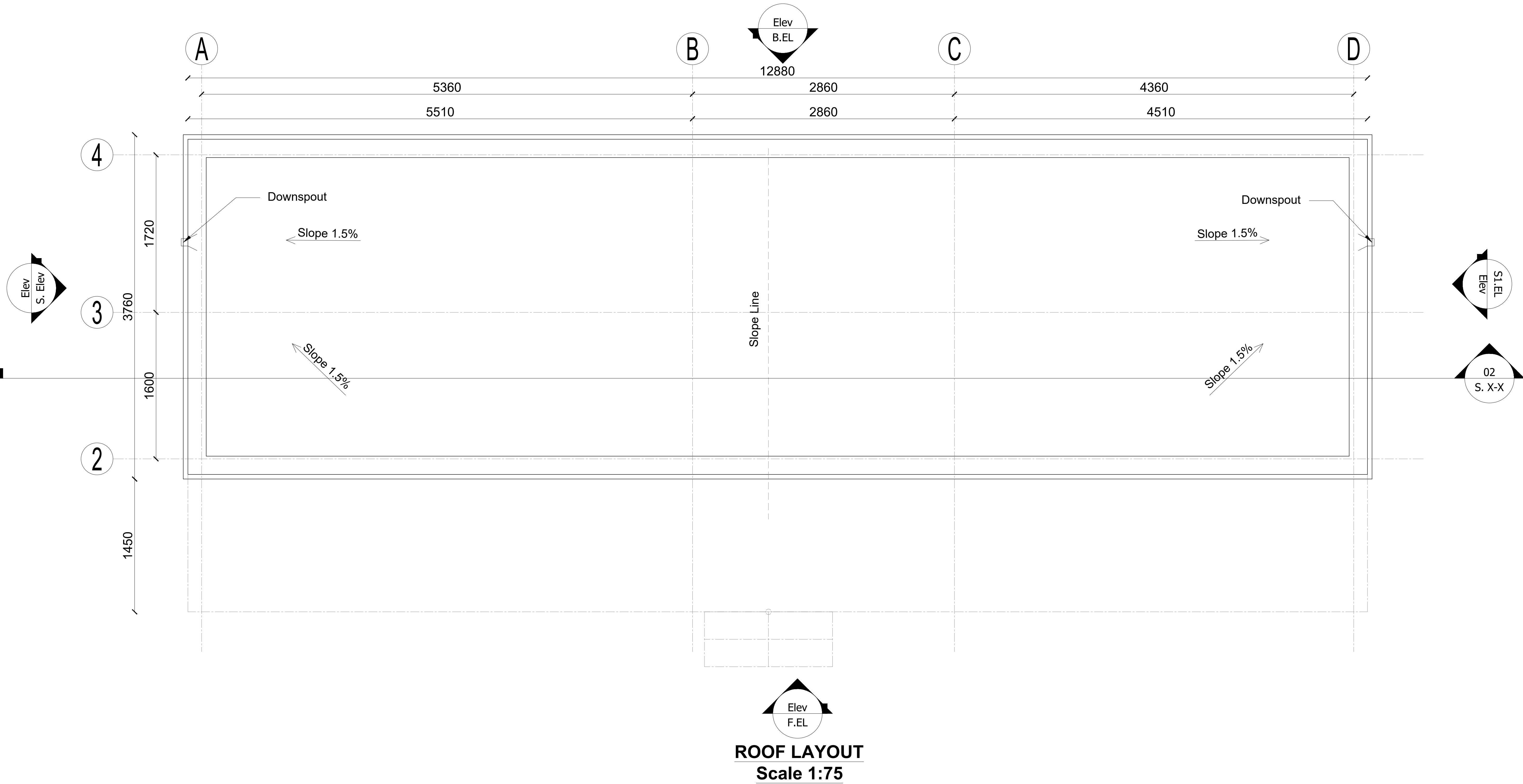
| | | |
|-----|-------------------------|------------|
| No. | Submission Description: | Date: |
| | Modification | 15/01/2024 |
| | | |
| | | |
| | | |
| | | |

AVERAGE SIZED FAMILY SHELTER
PERMANENT SHELTER

Permanent Shelter Farah Drawings

Sheet
Reference
Number

A-102B



United Nations High Commissioner for Refugees

| | | |
|------------------|--------------------|--|
| Dwg Modified By: | Field Office Herat | |
| Checked By: | Field Office Herat | |
| Approved by: | | |

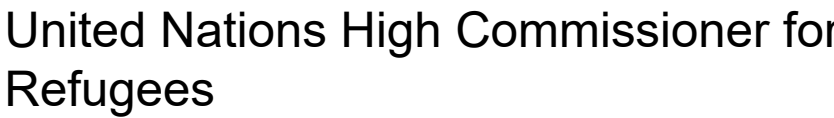
| | | |
|-----|-------------------------|------------|
| No. | Submission Description: | Date: |
| | Modification | 15/01/2024 |
| | | |
| | | |
| | | |
| | | |
| | | |

AVERAGE SIZED FAMILY SHELTER
PERMANENT SHELTER

Permanent Shelter Farah Drawings

Sheet
Reference
Number

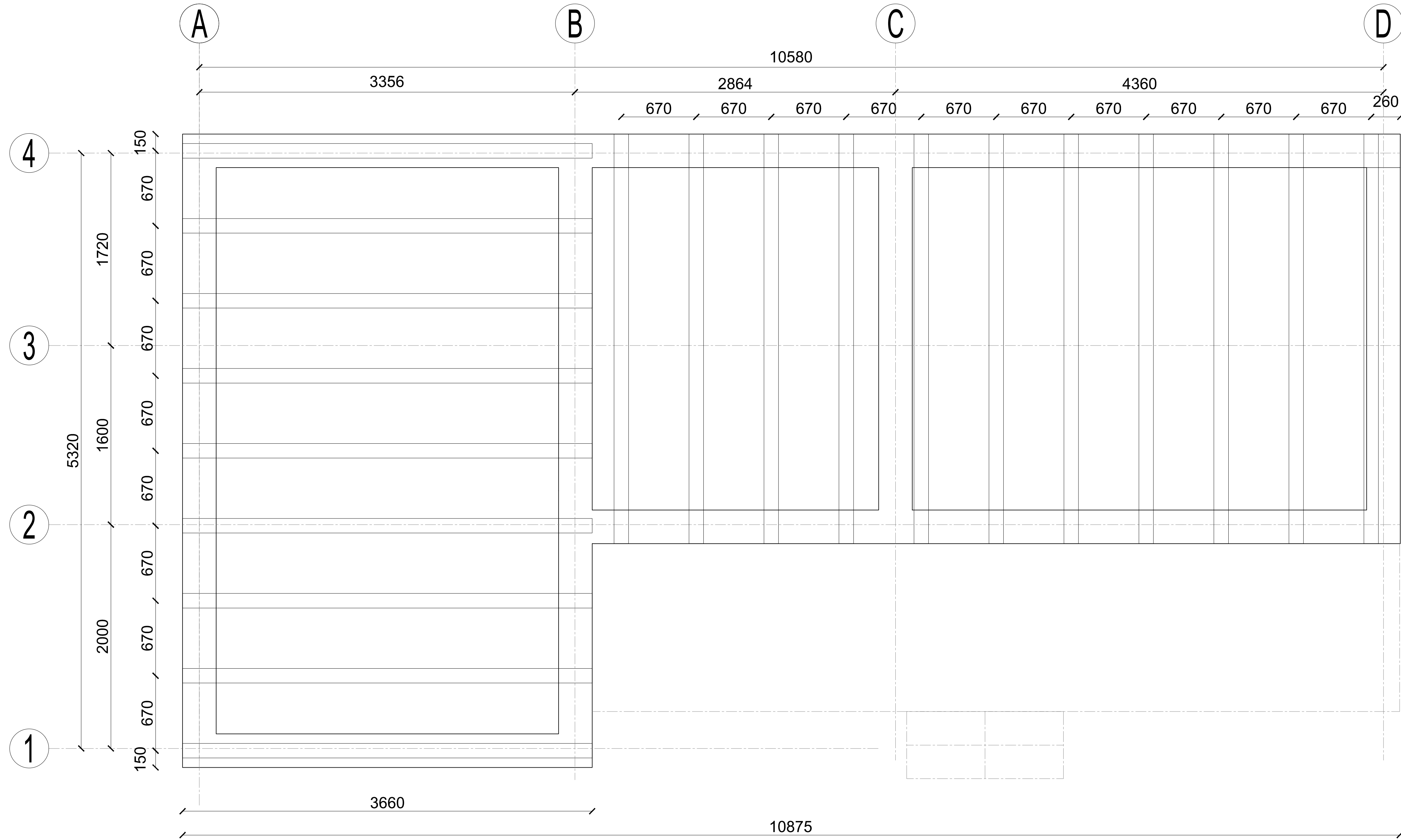
A-103



Approved by:

Permanent Shelter Farah Drawings

Δ-103B



ROOF LAYOUT
Scale 1:75



United Nations High Commissioner for Refugees

| | | |
|------------------|--------------------|--|
| Dwg Modified By: | Field Office Herat | |
| Checked By: | Field Office Herat | |
| Approved by: | | |

| No. | Submission Description: | Date: |
|-----|-------------------------|------------|
| | Modification | 15/01/2024 |
| | | |
| | | |
| | | |
| | | |
| | | |

AVERAGE SIZED FAMILY SHELTER
PERMANENT SHELTER

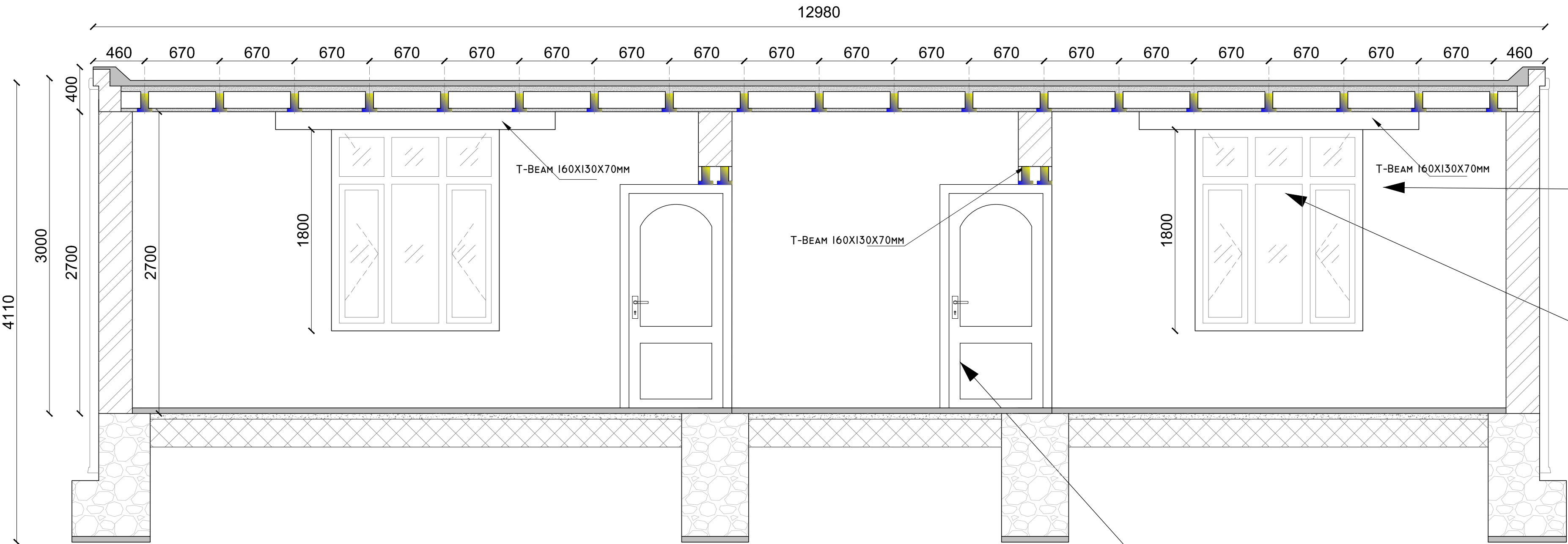
Permanent Shelter Farah Drawings

Sheet
Reference
Number

A-103C

Roof slab Details

600x200x150 mm hollow block supported by 160x130x70mm concrete T beam spaced at 670mm c/c in good 0.12 cm quality plastic sheet. Completed with mud straw plaster finish of 50 cm



Foundation Details

Monolithic finished floor of PCC on 10cm compacted soil, on 20cm hardcore filling. 30x200x150 hollow block walling is supported by random rubble stone masonry foundation of depth to be determined on site, 60cm wide foundation

300mm thick hollow block of 300x150x150mm in all external walling with 1:6 cement sand mortar joint, plastered, internal wall include mud gypsum plaster

Coated stainless steel casement window with clear glass of 4mm thickness

Coated stainless steel casement door with clear glass of 4mm thickness

SECTIONAL DETAILS
Scale 1:75



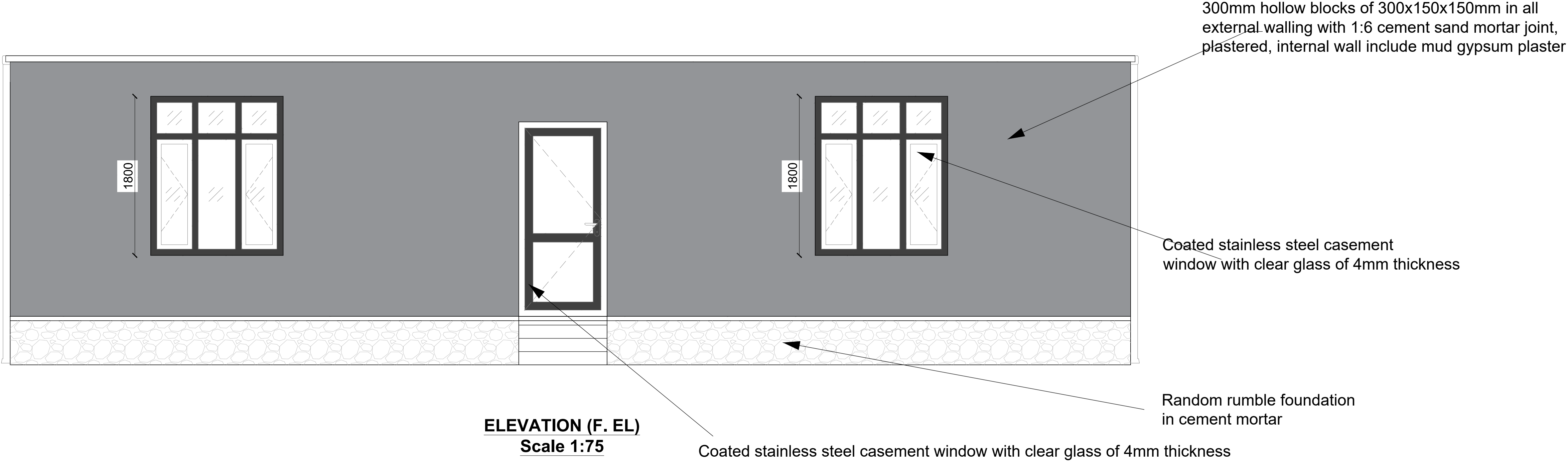
United Nations High Commissioner for Refugees

| | | |
|------------------|--------------------|--|
| Dwg Modified By: | Field Office Herat | |
| Checked By: | Field Office Herat | |
| Approved by: | | |

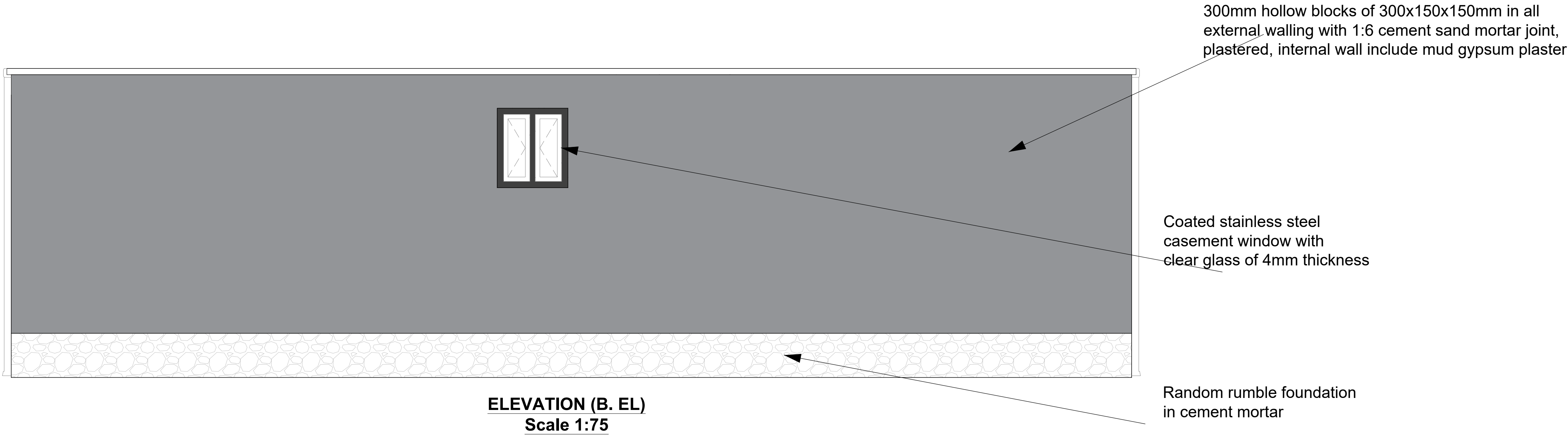
| | | |
|-----|-------------------------|------------|
| No. | Submission Description: | Date: |
| | Modification | 15/01/2024 |
| | | |
| | | |
| | | |
| | | |

| |
|---|
| AVERAGE SIZED FAMILY SHELTER PERMANENT SHELTER |
| Permanent Shelter Farah Drawings |

| |
|------------------------|
| Sheet Reference Number |
| A-104 |



01 | ELEVATION DETAILS



01 | ELEVATION DETAILS



United Nations High Commissioner for Refugees

| | | |
|------------------|--------------------|--|
| Dwg Modified By: | Field Office Herat | |
| Checked By: | Field Office Herat | |
| Approved by: | | |

| No. | Submission Description: | Date: |
|-----|-------------------------|------------|
| | Modification | 15/01/2024 |
| | | |
| | | |
| | | |
| | | |
| | | |

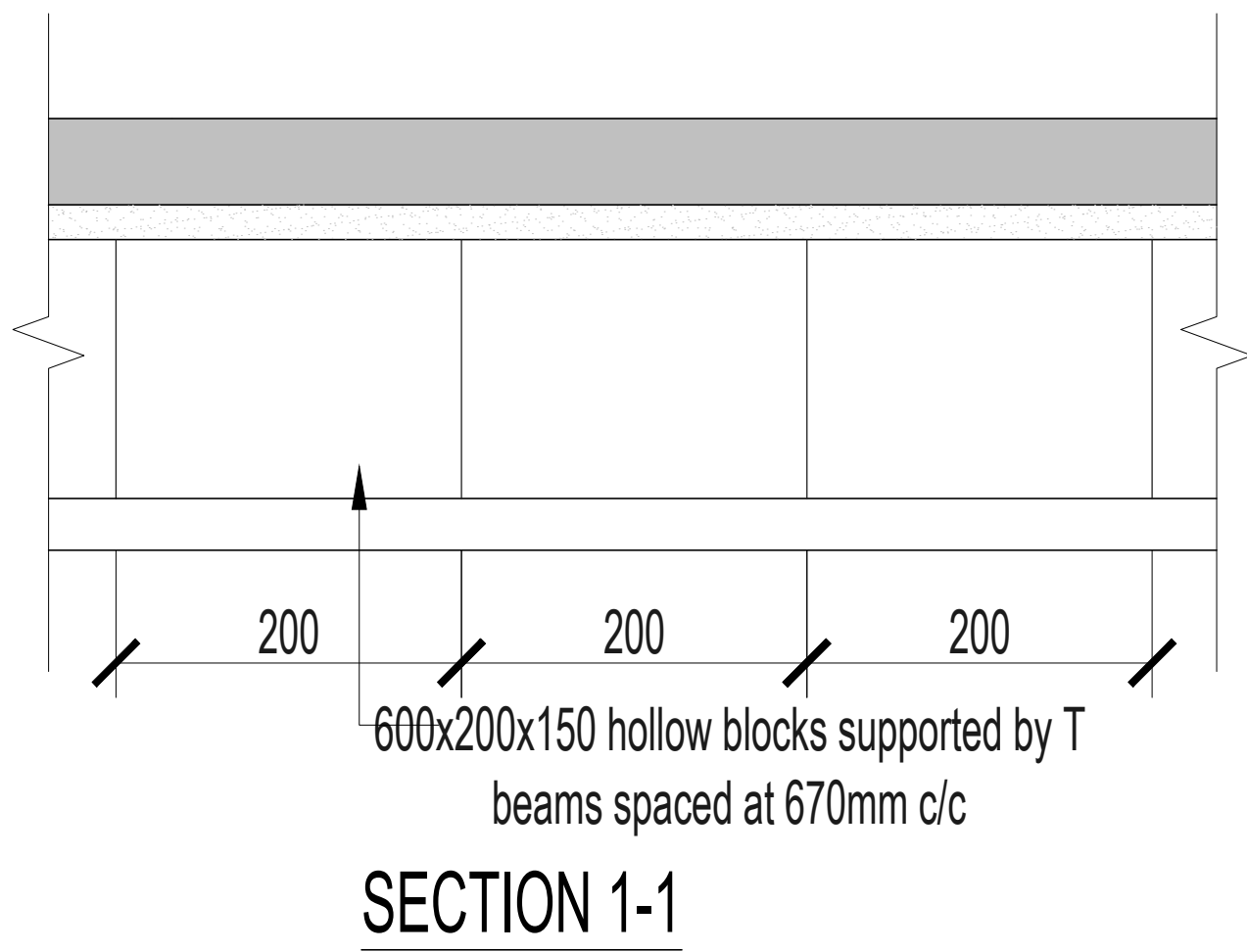
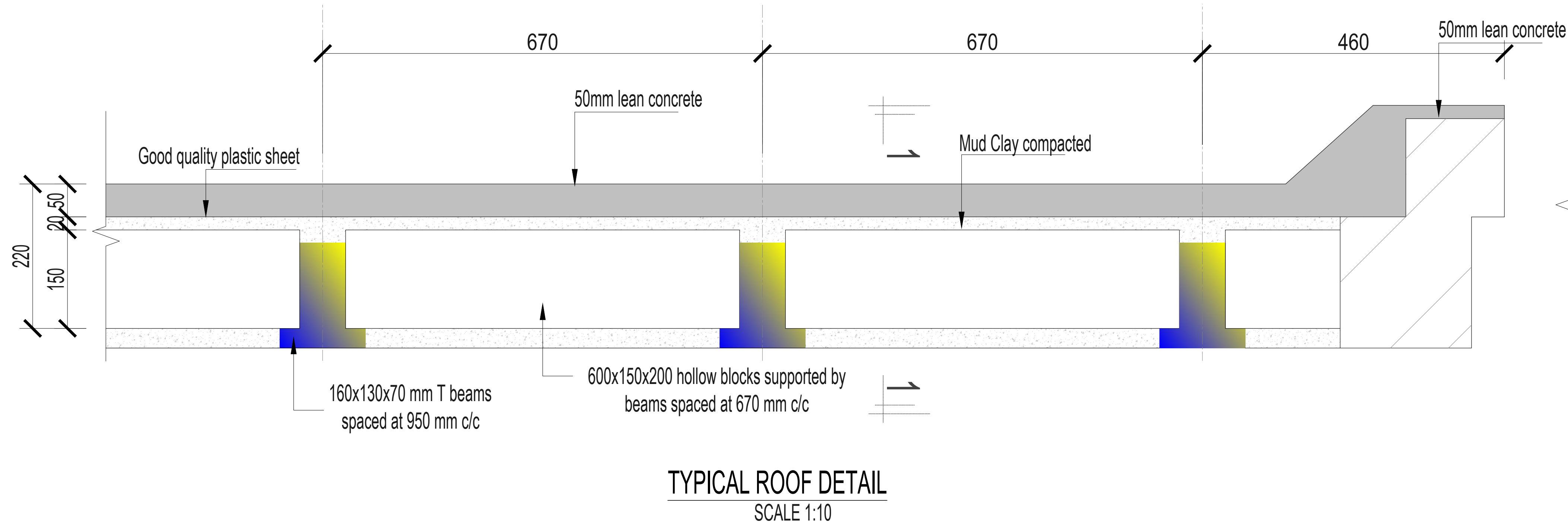
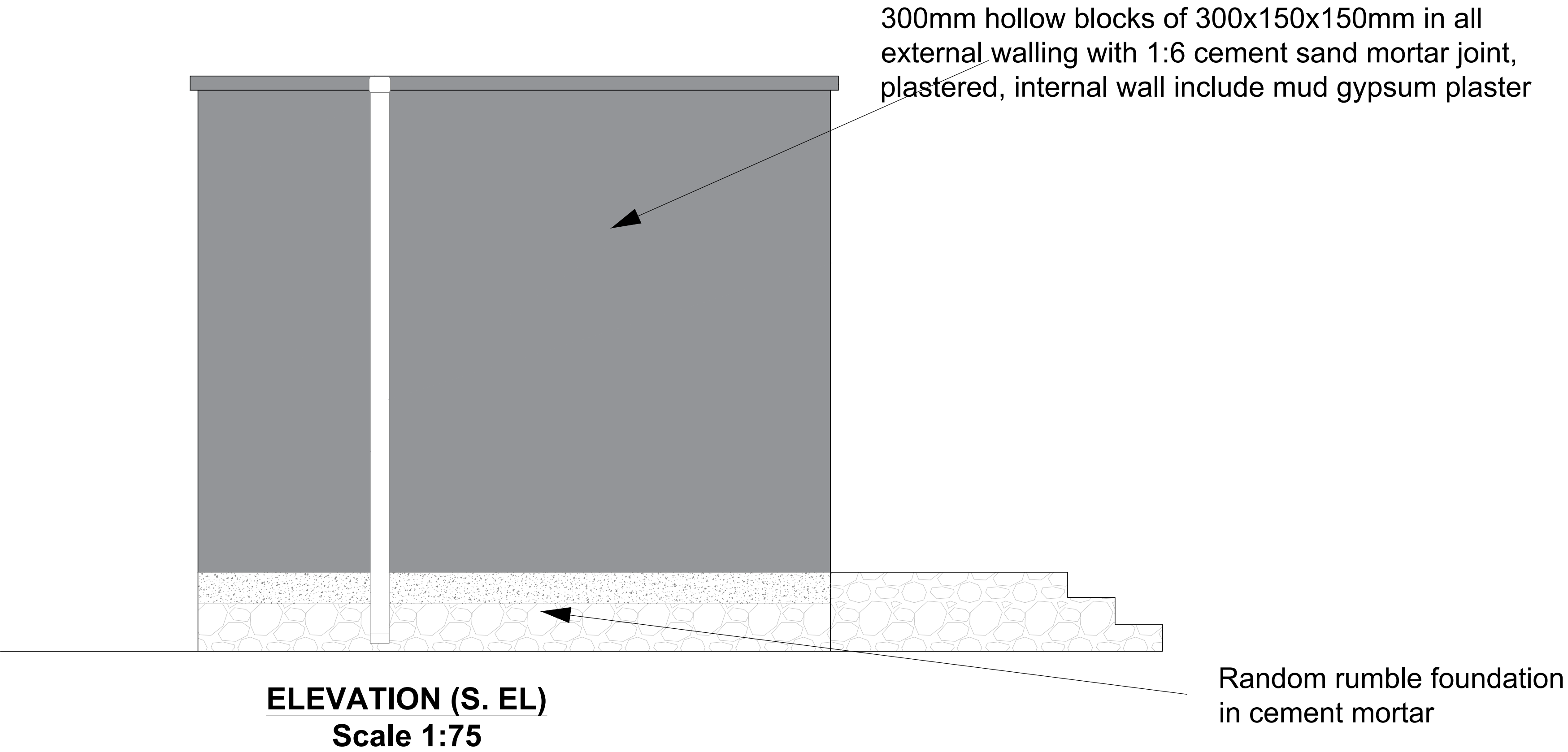
AVERAGE SIZED FAMILY SHELTER
PERMANENT SHELTER

Permanent Shelter Farah Drawings

Sheet
Reference
Number

A-106

ELEVATION DETAILS



ROOF SECTIONS



United Nations High Commissioner for Refugees

| | | |
|------------------|--------------------|--|
| Dwg Modified By: | Field Office Herat | |
| Checked By: | Field Office Herat | |
| Approved by: | | |

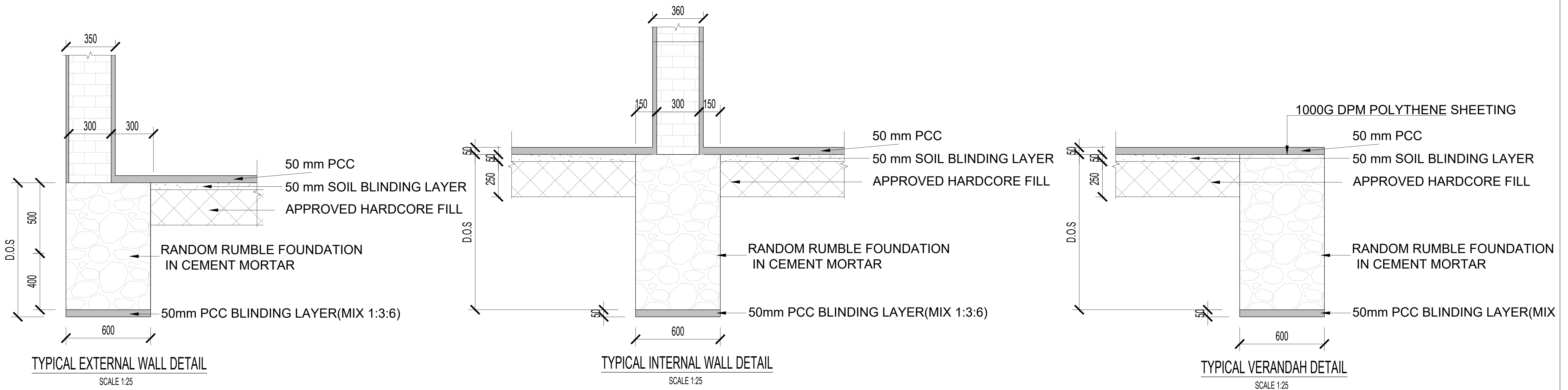
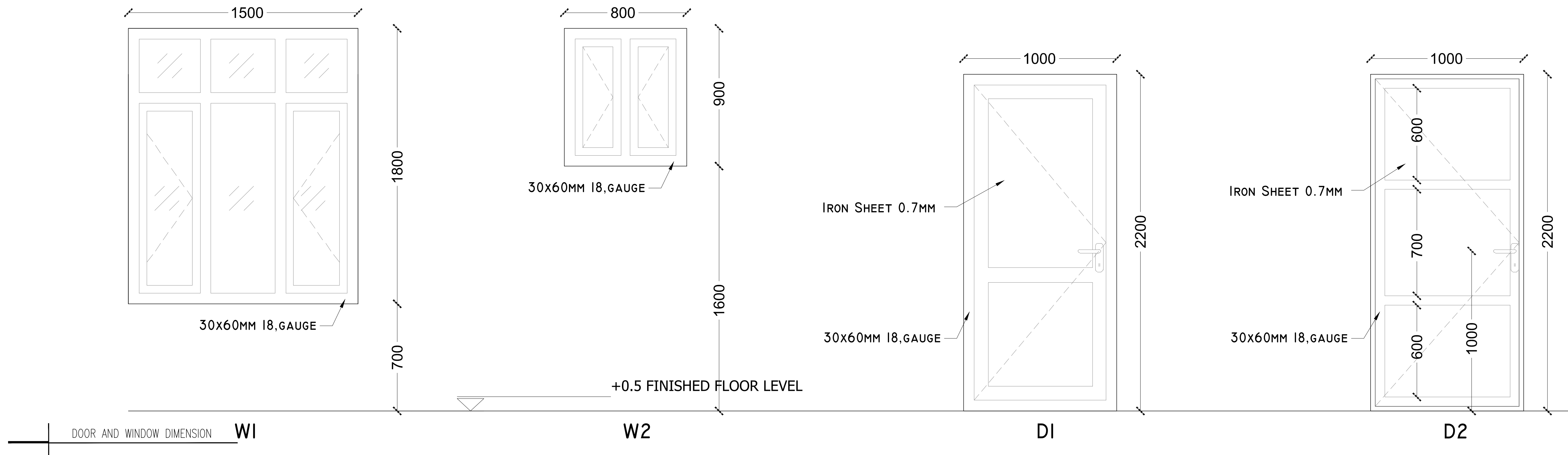
| No. | Submission Description: | Date: |
|-----|-------------------------|------------|
| | Modification | 15/01/2024 |
| | | |
| | | |
| | | |
| | | |
| | | |

AVERAGE SIZED FAMILY SHELTER
PERMANENT SHELTER

Permanent Shelter Farah Drawings

Sheet
Reference
Number

A-106/7



United Nations High Commissioner for Refugees

| | | |
|------------------|--------------------|--|
| Dwg Modified By: | Field Office Herat | |
| Checked By: | Field Office Herat | |
| Approved by: | | |

| No. | Submission Description: | Date: |
|-----|-------------------------|------------|
| | Modification | 15/01/2024 |
| | | |
| | | |
| | | |
| | | |

AVERAGE SIZED FAMILY SHELTER
PERMANENT SHELTER

Permanent Shelter Farah Drawings

Sheet
Reference
Number

A-105