




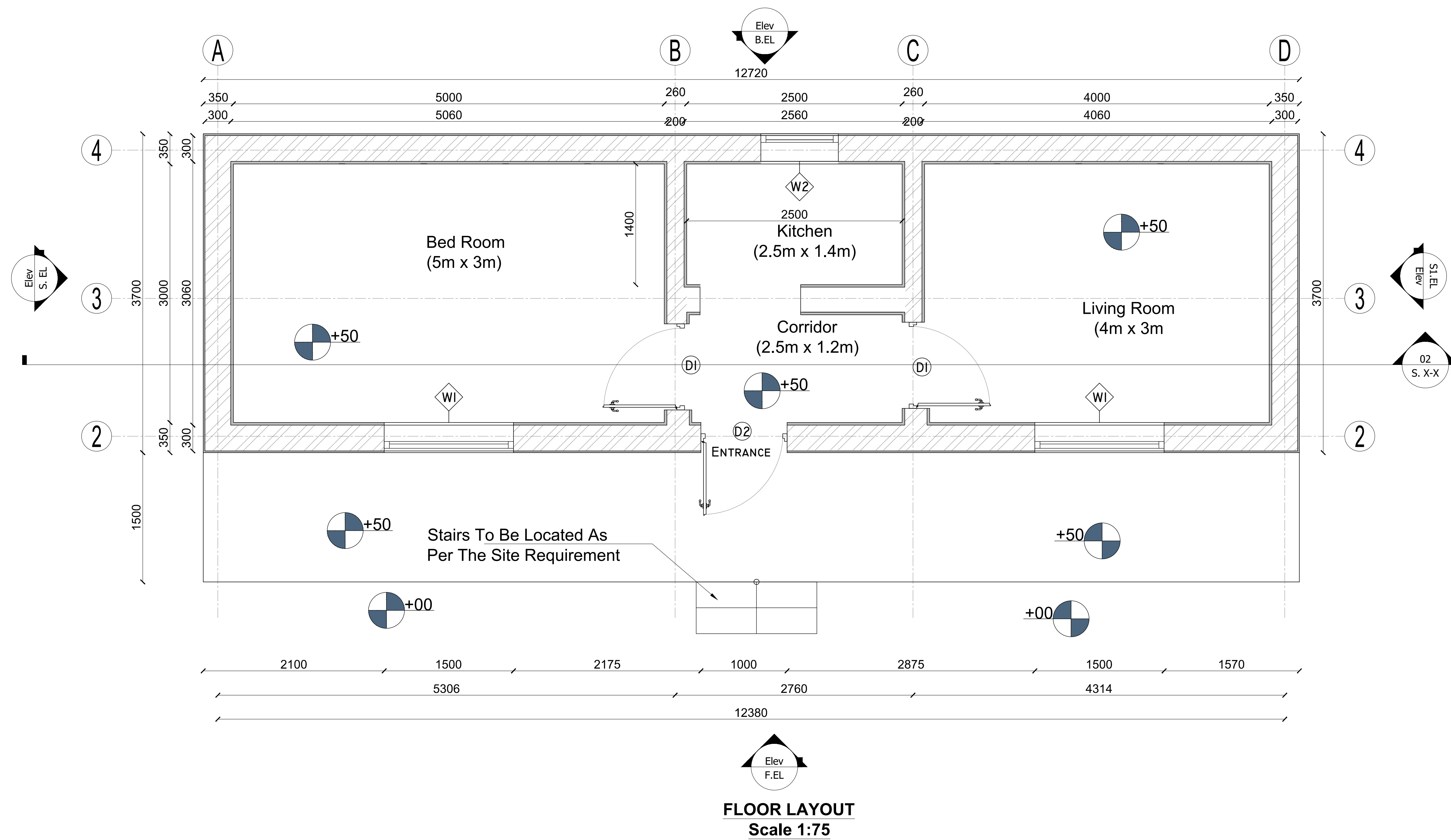
# United Nations High Commissioner for Refugees

## TWO ROOMED SHELTER Design Package for Herat Office (Herat Province)

2024 DESIGNS

Osewe D.

 United Nations High Commissioner for Refugees	Dwg Modified By:	Field Office Herat		No.	Submission Description:	Date:
	Checked By:	Field Office Herat			Modification	15/01/2024
	Approved by:					
				AVERAGE SIZED FAMILY SHELTER PERMANENT SHELTER		Sheet Reference Number
				Permanent Shelter Drawings		A-000



United Nations High Commissioner for Refugees

Dwg Modified By:	Field Office Herat	
Checked By:	Field Office Herat	
Approved by:		

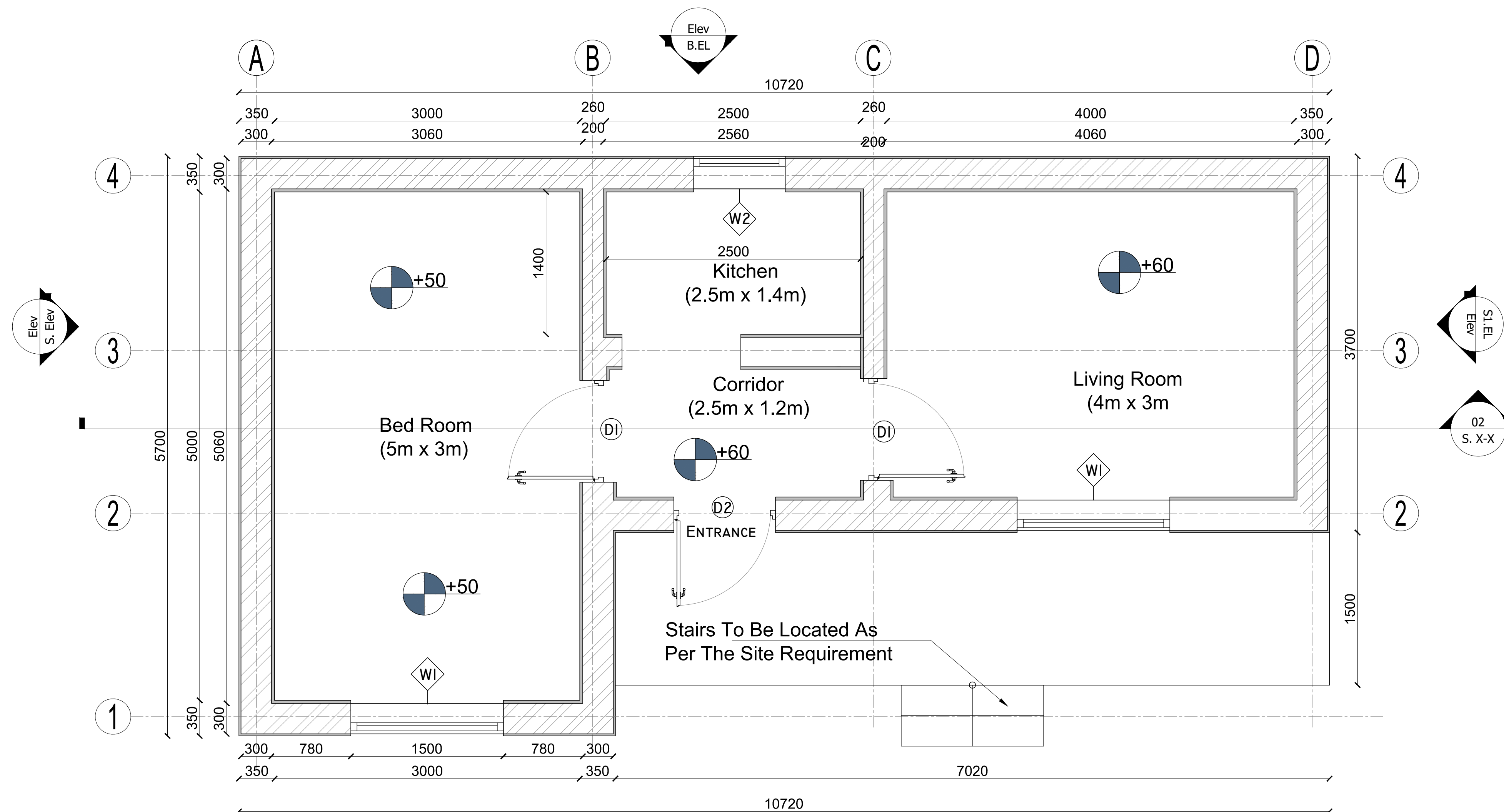
No.	Submission Description:	Date:
	Modification	15/01/2024

AVERAGE SIZED FAMILY SHELTER  
PERMANENT SHELTER

Permanent Shelter Drawings

Sheet  
Reference  
Number

A-101



**FLOOR LAYOUT**  
**Scale 1:75**



United Nations High Commissioner for Refugees

Dwg Modified By:	Field Office Herat	
Checked By:	Field Office Herat	
Approved by:		

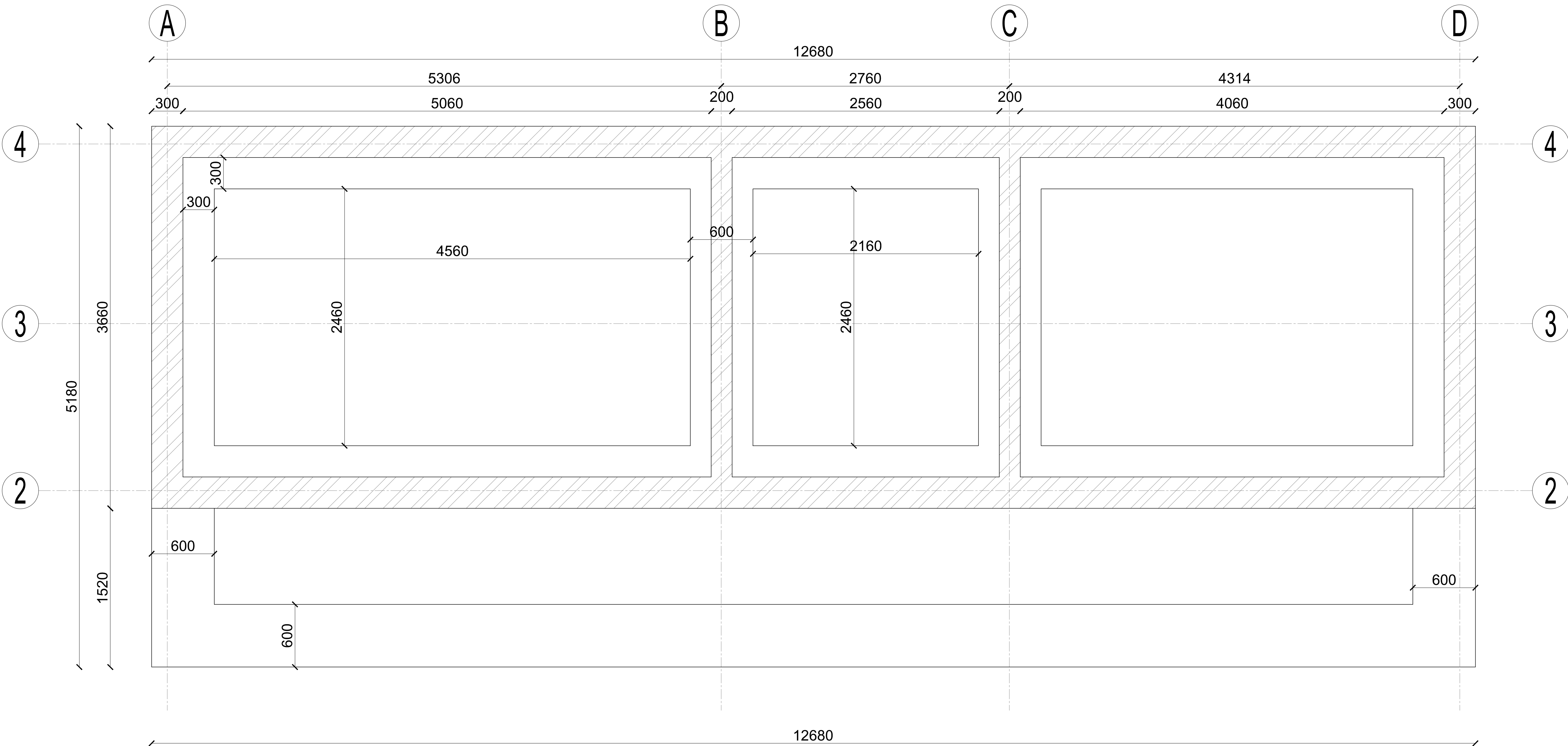
No.	Submission Description:	Date:
	Modification	15/01/2024

AVERAGE SIZED FAMILY SHELTER  
PERMANENT SHELTER

Permanent Shelter Drawings

Sheet  
Reference  
Number

A-101B



**FOUNDATION LAYOUT**  
**Scale 1:75**



United Nations High Commissioner for  
Refugees

Dwg Modified By:	Field Office Herat	
Checked By:	Field Office Herat	
Approved by:		

No.	Submission Description:	Date:
	Modification	15/01/2024

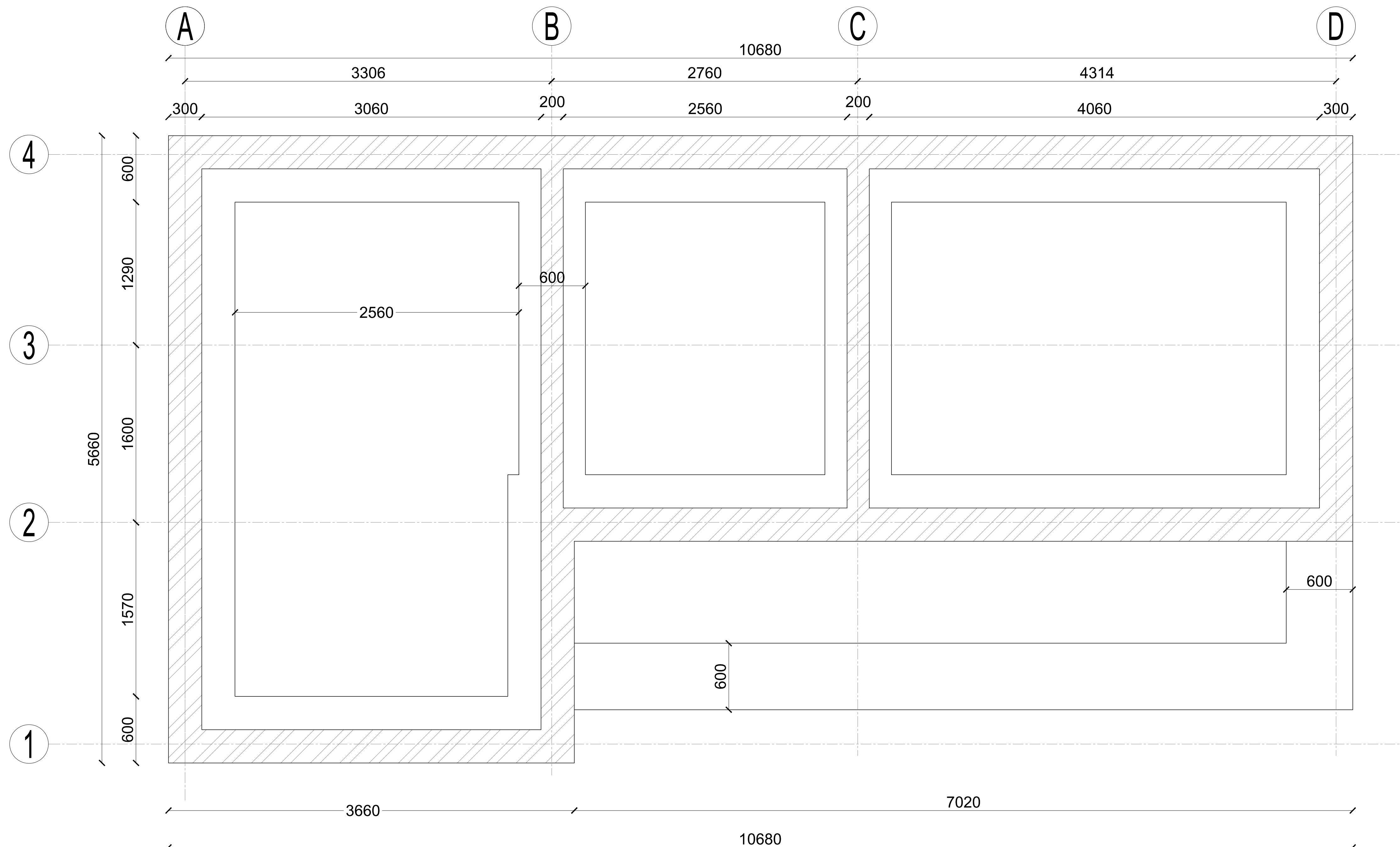
AVERAGE SIZED FAMILY SHELTER  
PERMANENT SHELTER

Permanent Shelter Drawings

Sheet  
Reference  
Number

A-102B





**FOUNDATION LAYOUT**  
**Scale 1:75**



United Nations High Commissioner for  
Refugees

Dwg Modified By: Field Office Herat

Checked By: Field Office Herat

Approved by:

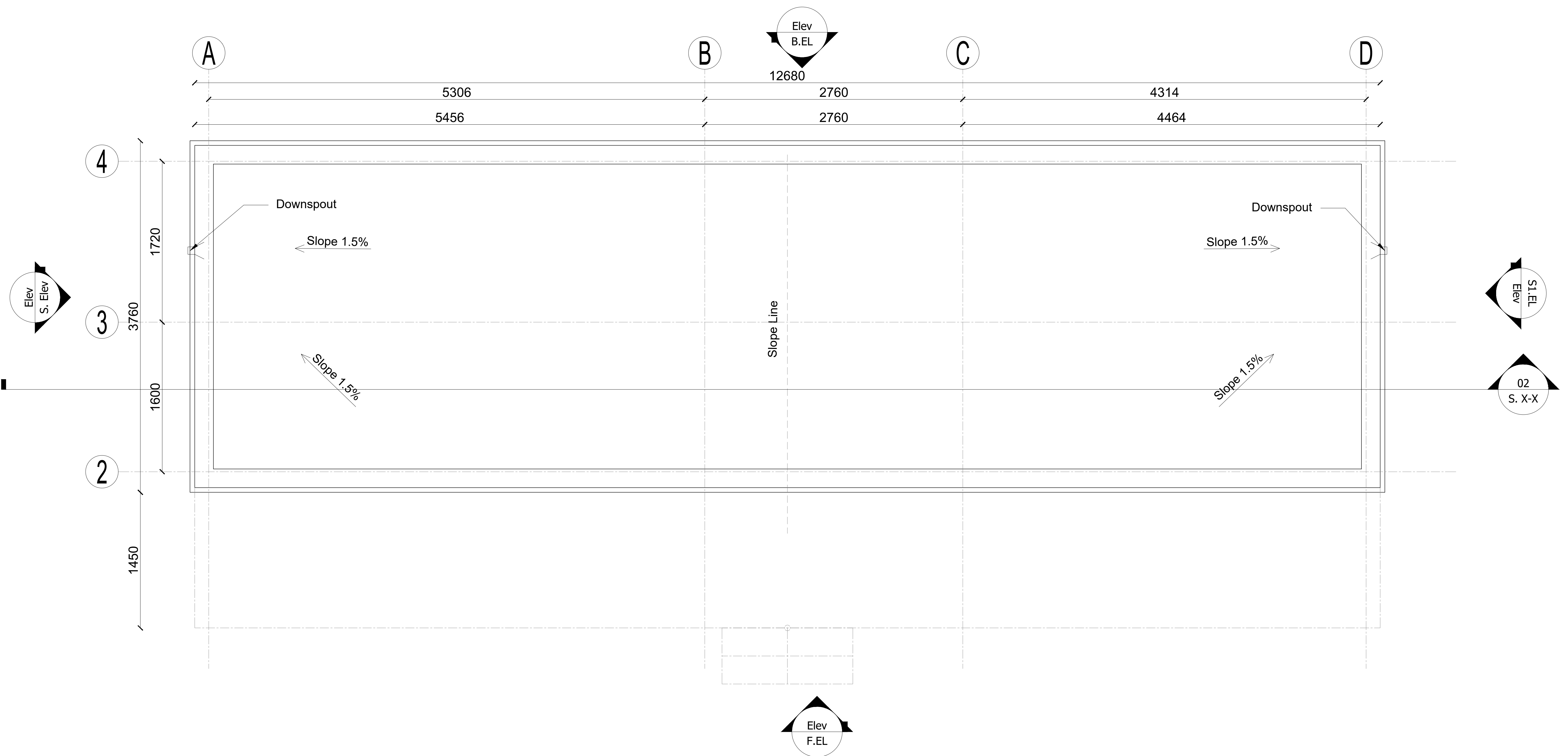
No.	Submission Description:	Date:
	Modification	15/01/2024

AVERAGE SIZED FAMILY SHELTER  
PERMANENT SHELTER

Permanent Shelter Drawings

Sheet  
Reference  
Number

A-102



**ROOF LAYOUT**  
**Scale 1:75**



United Nations High Commissioner for Refugees

Dwg Modified By:	Field Office Herat	
Checked By:	Field Office Herat	
Approved by:		

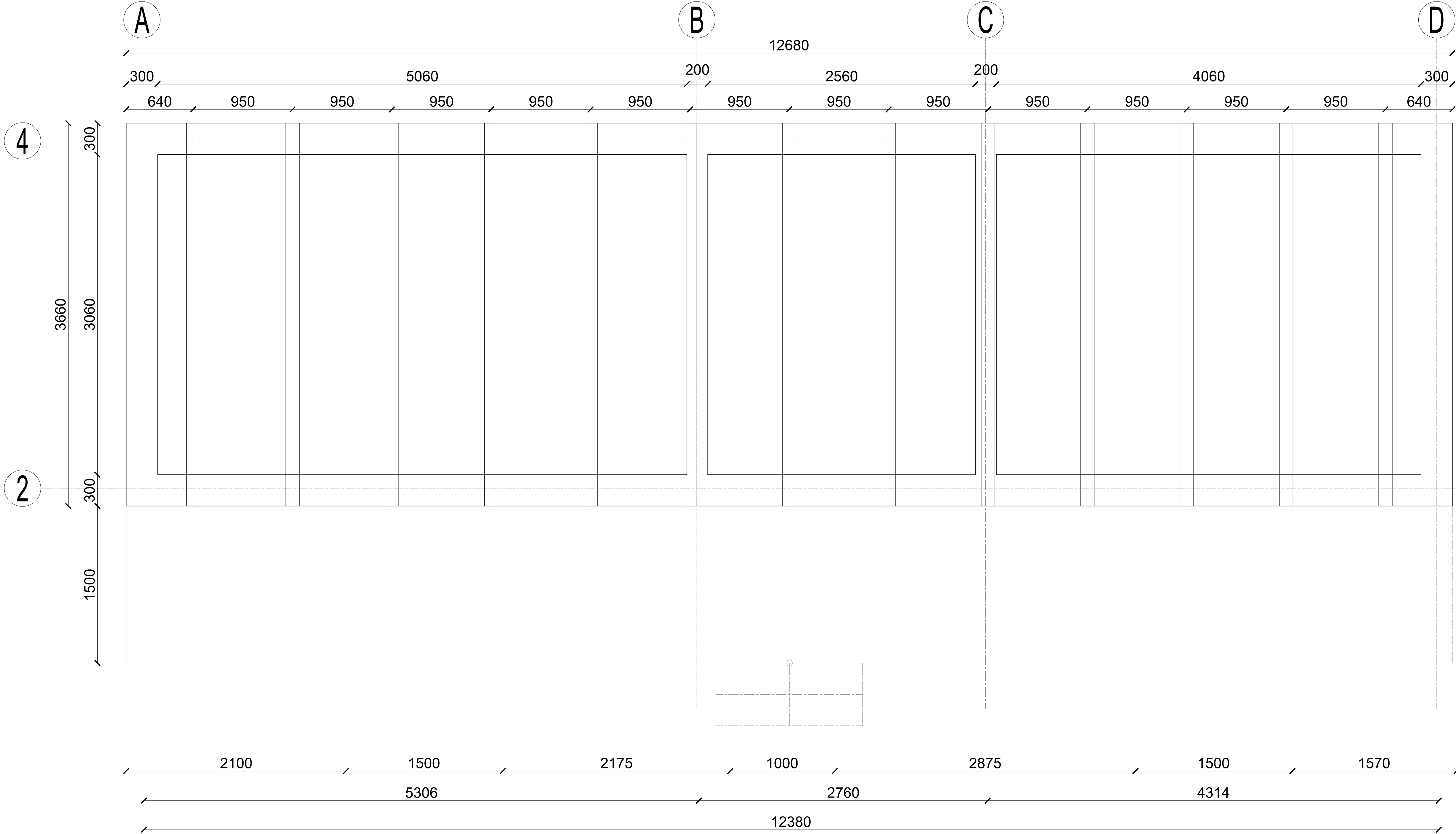
No.	Submission Description:	Date:
	Modification	15/01/2024

AVERAGE SIZED FAMILY SHELTER  
PERMANENT SHELTER

Permanent Shelter Drawings

Sheet  
Reference  
Number

A-103



ROOF LAYOUT  
Scale 1:75



United Nations High Commissioner for Refugees

Dwg Modified By:		
Checked By:		
Approved by:		

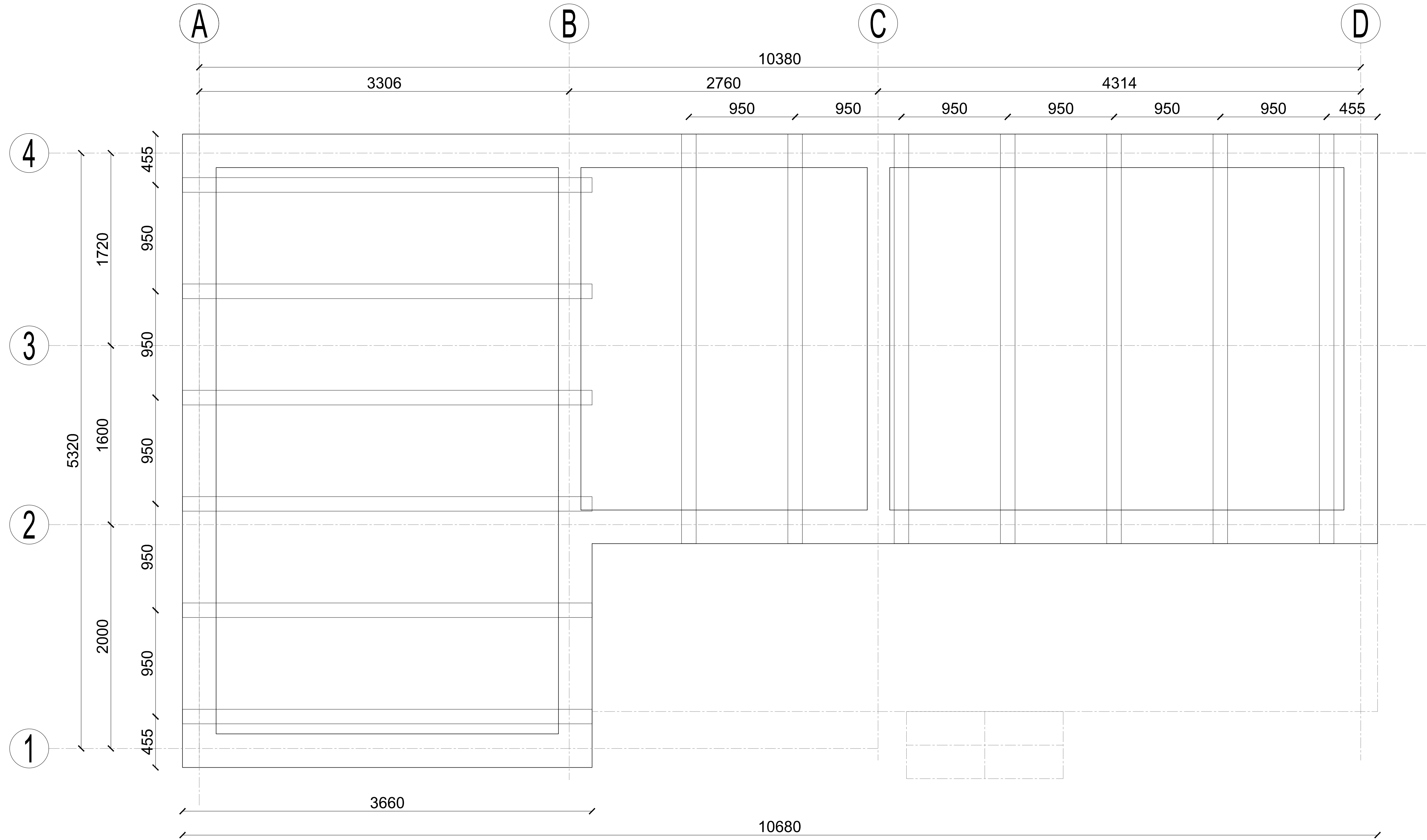
No.	Submission Description:	Date:
	Modification	15/01/2024

AVERAGE SIZED FAMILY SHELTER  
PERMANENT SHELTER

Permanent Shelter Drawings

Sheet  
Reference  
Number

A-103B



**ROOF LAYOUT**  
**Scale 1:75**



United Nations High Commissioner for Refugees

Dwg Modified By:

Checked By:

Approved by:

No.	Submission Description:	Date:
	Modification	

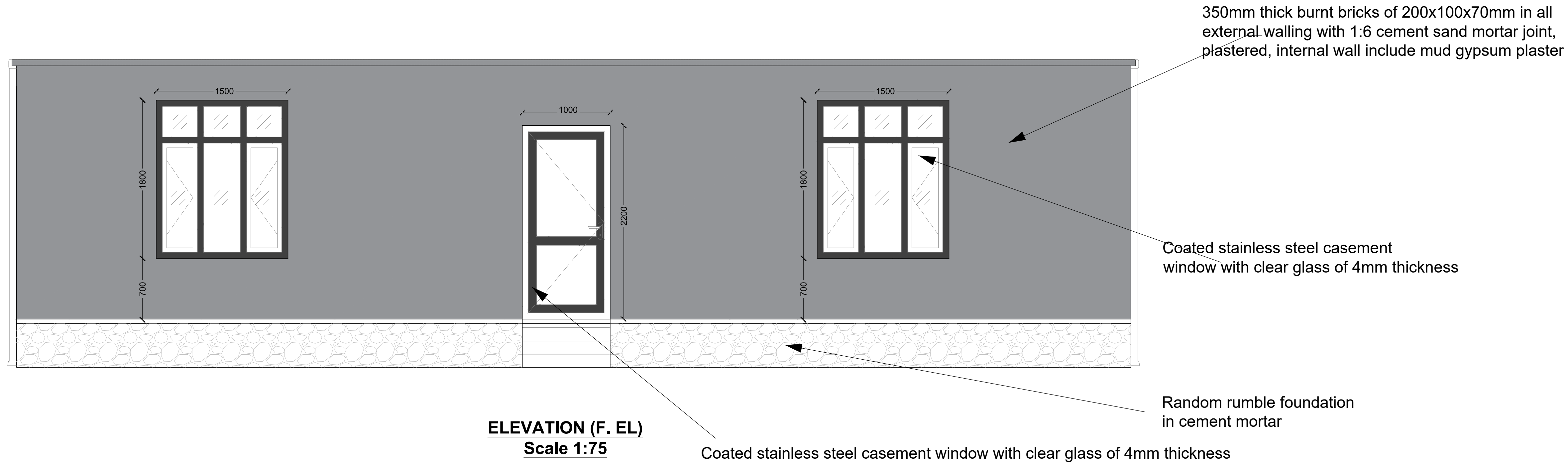
AVERAGE SIZED FAMILY SHELTER  
PERMANENT SHELTER

Permanent Shelter Drawings

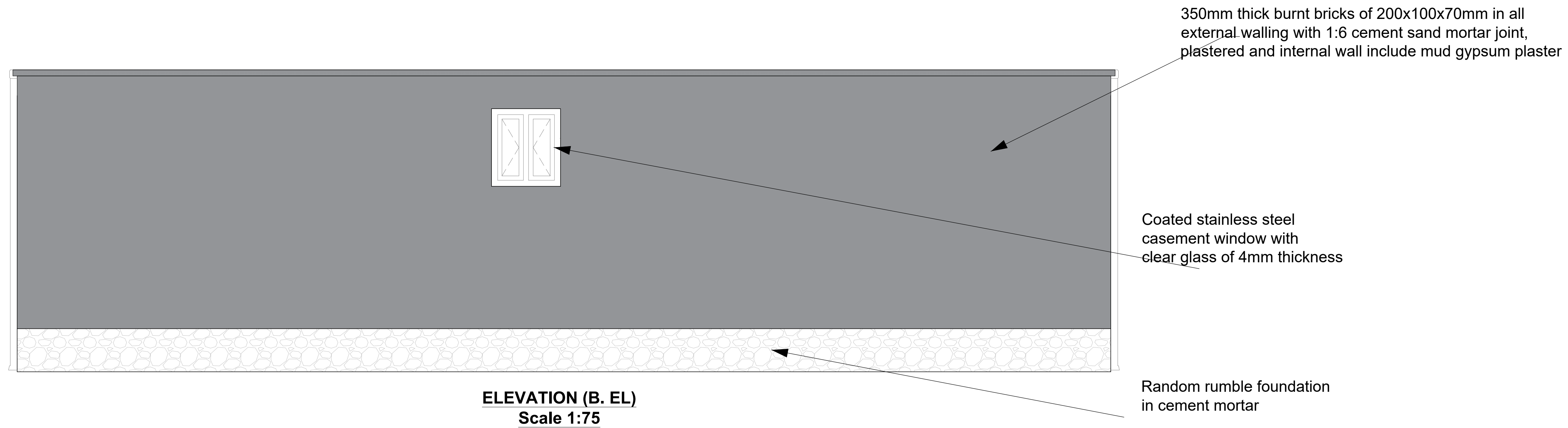
Sheet  
Reference  
Number

A-103C





01 | ELEVATION DETAILS



01 | ELEVATION DETAILS



United Nations High Commissioner for Refugees

Dwg Modified By:	Field Office Herat	
Checked By:	Field Office Herat	
Approved by:		

No.	Submission Description:	Date:
	Modification	15/01/2024

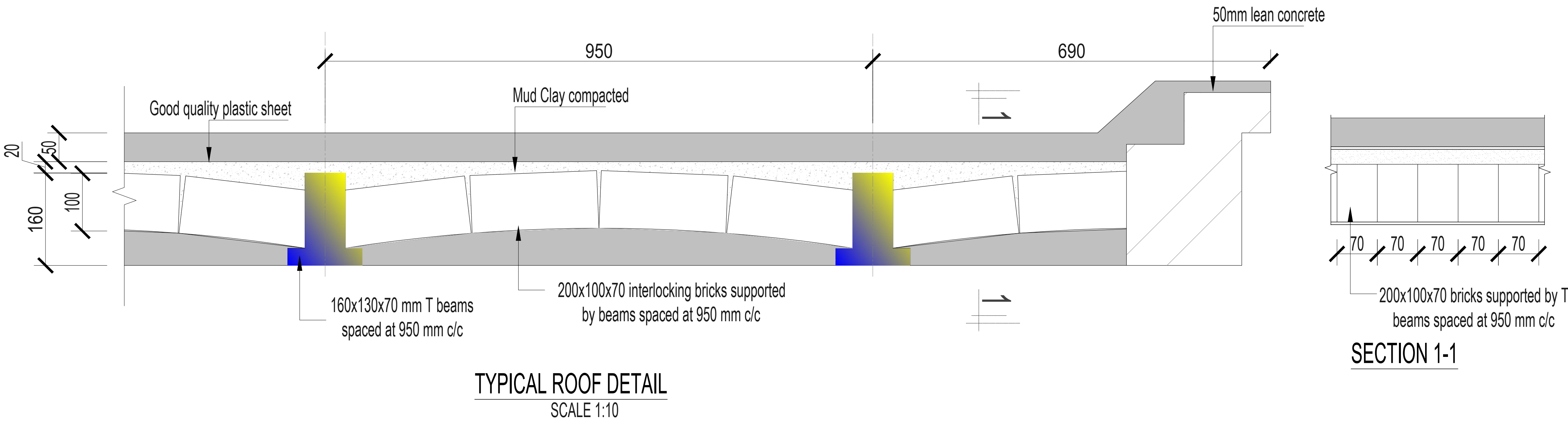
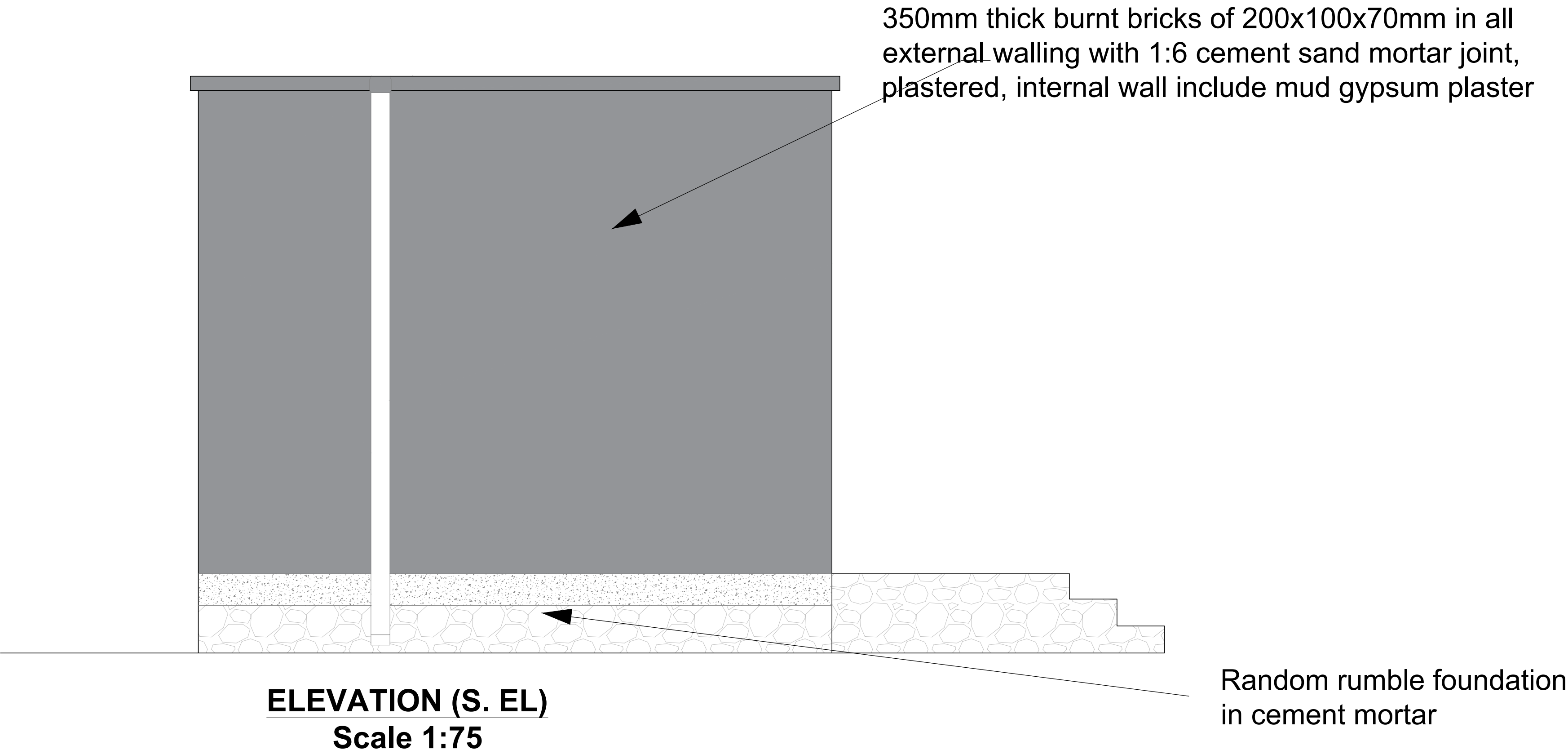
AVERAGE SIZED FAMILY SHELTER  
PERMANENT SHELTER

Permanent Shelter Drawings

Sheet  
Reference  
Number

A-106

ELEVATION DETAILS



ROOF SECTIONS



United Nations High Commissioner for Refugees

Dwg Modified By:	Field Office Herat	
Checked By:	Field Office Herat	
Approved by:		

No.	Submission Description:	Date:
	Modification	15/01/2024

AVERAGE SIZED FAMILY SHELTER  
PERMANENT SHELTER

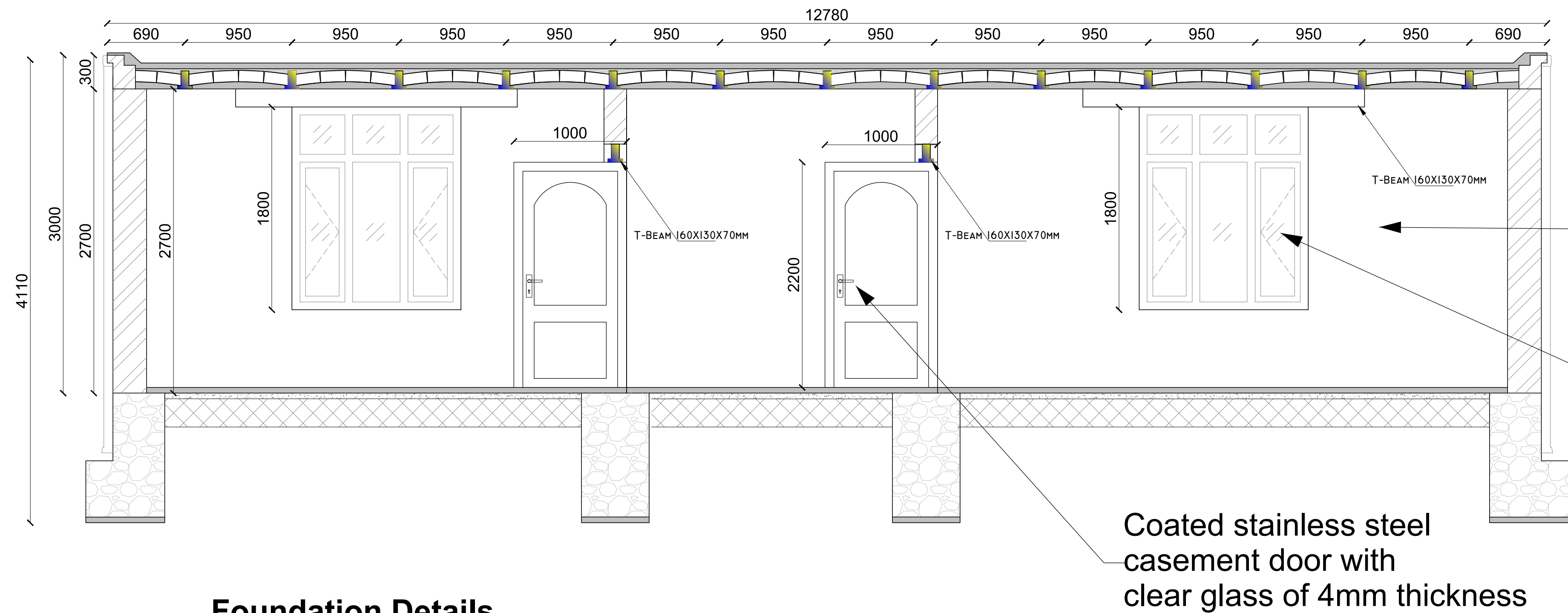
Permanent Shelter Drawings

Sheet  
Reference  
Number

A-106/7

Roof slab Details

200x100x70 mm burnt bricks supported by 160x130x70mm concrete T beam spaced at 950mm c/c in whole roof area with 130x300cm rush matting, good 0.12 cm quality plastic sheet. Completed with mud straw plaster finish of 50 cm



300mm thick burnt bricks of 200x100x70mm in all external walling with 1:6 cement sand mortar joint, plastered, internal wall include mud gypsum plaster

Coated stainless steel casement window with clear glass of 4mm thickness

Coated stainless steel casement door with clear glass of 4mm thickness

Foundation Details

Monolithic finished floor of PCC on 10cm compacted soil, on 20cm hardcore filling. 32cm brick walling is supported by random rubble stone masonry foundation of depth to be determined on site, 60cm wide foundation

SECTIONAL DETAILS  
Scale 1:75



United Nations High Commissioner for Refugees

Dwg Modified By:		
Checked By:		
Approved by:		

No.	Submission Description:	Date:
	Modification	15/01/2024

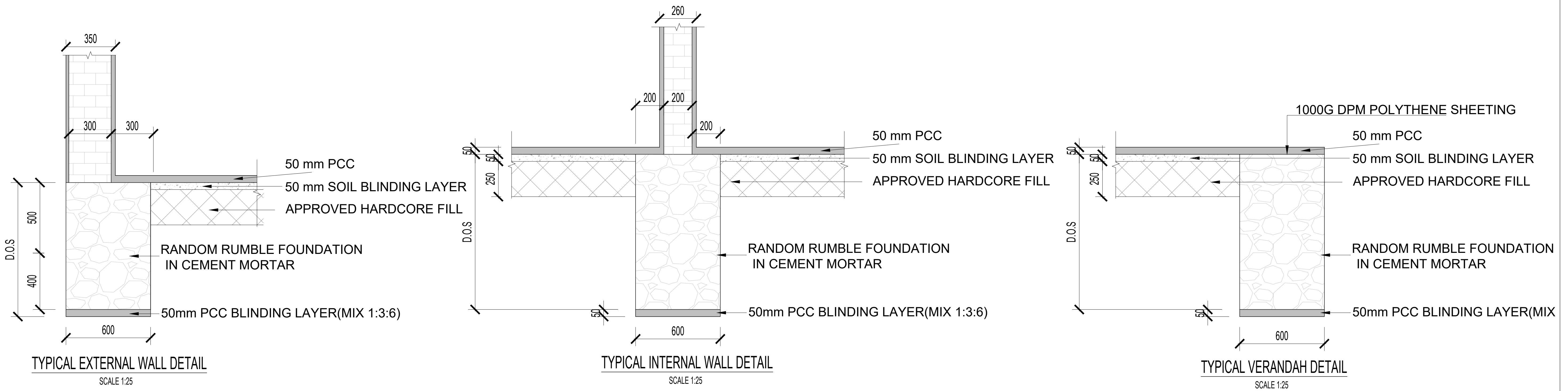
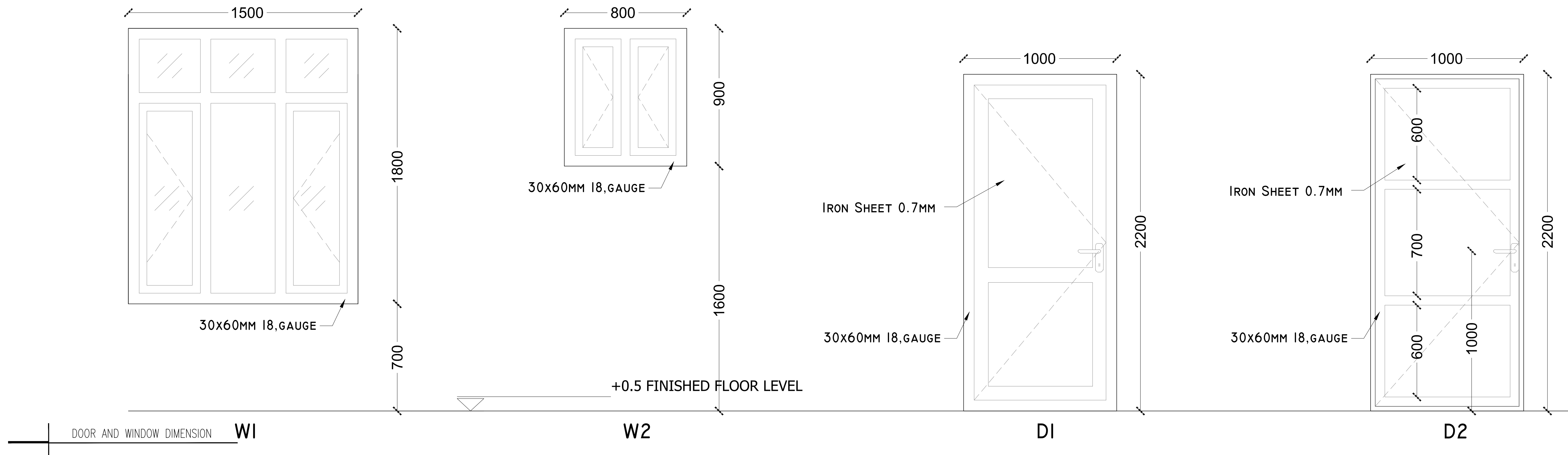
AVERAGE SIZED FAMILY SHELTER  
PERMANENT SHELTER

Permanent Shelter Drawings

Sheet  
Reference  
Number

A-104





United Nations High Commissioner for Refugees

Dwg Modified By:		
Checked By:		
Approved by:		

No.	Submission Description:	Date:
	Modification	15/01/2024

AVERAGE SIZED FAMILY SHELTER  
PERMANENT SHELTER

Permanent Shelter Drawings

Sheet  
Reference  
Number

A-105