

Construction of two story building maternity ward in the existing CHC of Dasht-e-Archi district PARR

Project Code:.....



TECHNICAL DRAWING SUB OFFICE MAZAR



United Nation High
Commissioner for
Refugees

People Action For
change organization
PACo



SURVEYED BY	PACO SURVEY TEAM	Sub- project Name	Construction of two story building maternity ward in the existing CHC of Dasht-e-Archi district PARR	DESIGNED SUBMITTAL		SCALE 1:100
DESIGN BY	PACO DESIGN TEAM	Section Name	Cover	SUBMITTAL DESCRIPTION	Project Info.	PAPER SIZE A-3
DRAWING BY	PACO DESIGN TEAM	Project Code		DATE	19-DEC-2023	SHEET REFERENCE NO MODEL OF PAGE 1
CHECKED BY	PACO DESIGN TEAM	Drawing Title	Cover page			
APPROVED BY	UNHCR					

TECHNICAL PAKEAGE OF DASHT-E-ARCHI TWO STORY MATERNITY BUILDING WITH COMPONENTS OF KUNDUZ PROVINCE

INDEX SHEET

	DECRPTIONS	PAGES/SHEETS	REMARKS
Annex A	Agreement of Kunduz DoPH on construction of Kunduz Maternity building with Translation		
Annex B	Feasibility Study Report Kunduz Maternity Building		
Annex C	Concept Note on Construction of Maternity Building inside CHC of Dasht-e-Archi Kunduz province PARR		
Annex D	Land Document of Kunduz DoPH on Construction of maternity building with Translation		
Annex E	Latter of Kunduz DoPH Agreement on current design with Translation		
Annex F	Project Technical Specifications		
Annex G	Project BoQ		
Annex H	Project Check List		
Annex I	Technical Drawings		
	Project information	1	
	Project Google Earth plan	1	
	Two story building Architecture	9	
	Two story building Structure	13	
	Two story building Electrical	9	
	Two story building Plumbing	4	
	Two story building heating system	2	
	Septic Tank Architecture and Structure	1	
	Water Tank Architecture and structure	1	
	LPG and Oxygen room	1	
	Central heating unit (CHU)room	1	
	Solar System	2	



United Nation High
Commissioner for
Refugees

People Action For
change organization
PACo



SURVEYED BY	PACO SURVEY TEAM
DESIGN BY	PACO DESIGN TEAM
DRAWING BY	PACO DESIGN TEAM
CHECKED BY	PACO DESIGN TEAM
APPROVED BY	UNHCR

Sub- project Name	Dashti Archi CHC Maternity two story building with components.
Section Name	Cover
Project Code	
Drawing Title	Caver page

DESIGNED SUBMITTAL	
SUBMITTAL DESCRIPTION	Project Info.
DATE	19-DEC-2023

SCALE
1:100

PAPER SIZE A-3

SHEET REFERENCE NO
MODEL OF PAGE 2

GE-Plan

Dashti Archi CHC Maternity two story building with components..

Legend

-  kondoz BHC
-  Konduz Datsh-i-Arch CHC



United Nation High
Commissioner for
Refugees

People Action For
change organization
PACo



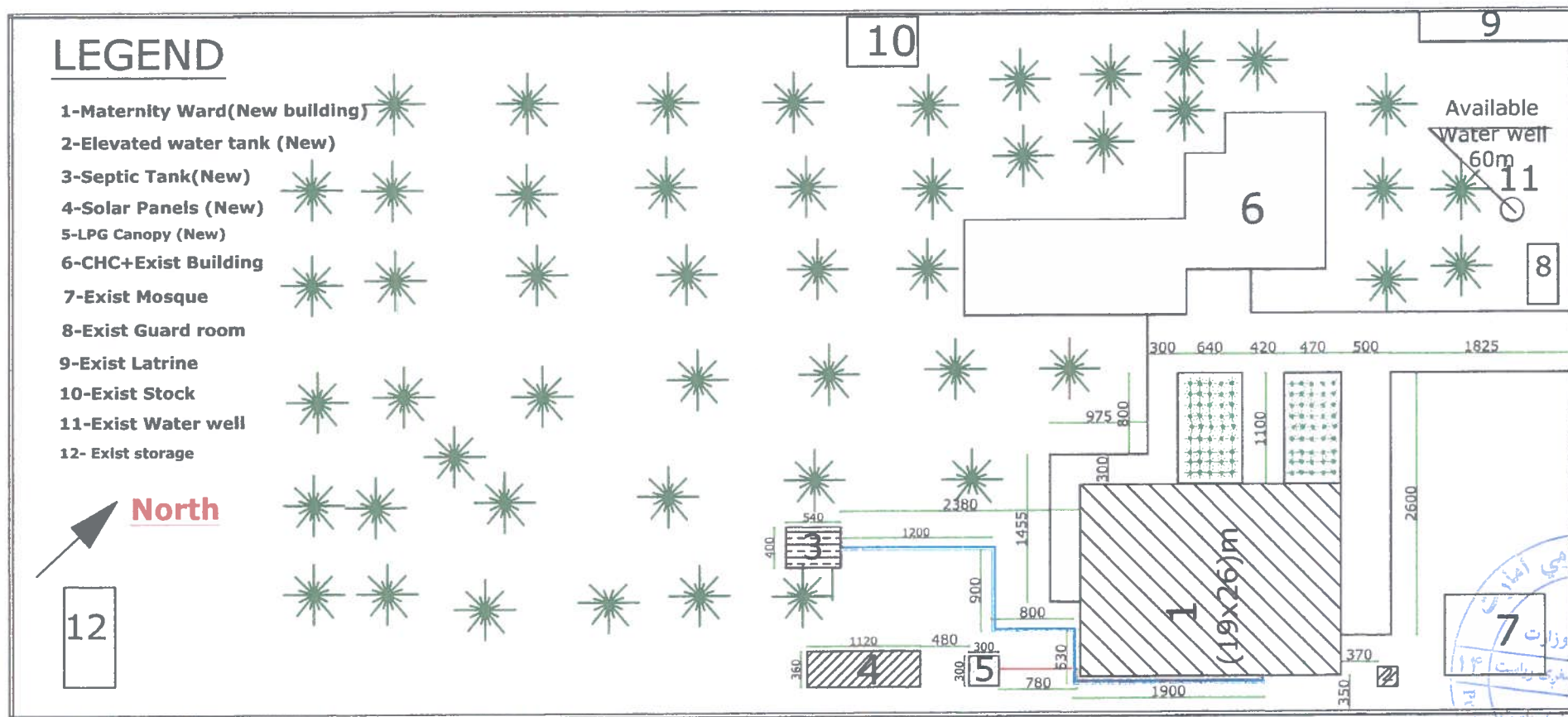
SURVEYED BY	PACO SURVEY TEAM
DESIGN BY	PACO DESIGN TEAM
DRAWING BY	PACO DESIGN TEAM
CHECKED BY	PACO DESIGN TEAM
APPROVED BY	UNHCR

Sub- project Name	Construction of two story building maternity ward in the existing CHC of Dasht-e-Archi district PARR
Section Name	Cover
Project Code	
Drawing Title	Google Earth site plan

DESIGNED SUBMITTAL	
SUBMITTAL DESCRIPTION	Project Location
DATE	19-DEC-2023

SCALE	1:100
PAPER SIZE A-3	
SHEET REFERENCE NO	
MODEL OF PAGE 2	

Dasht-e-Archi CHC Maternity two story building with components.



United Nation High
Commissioner for
Refugees
People Action For Change
organization
PACO



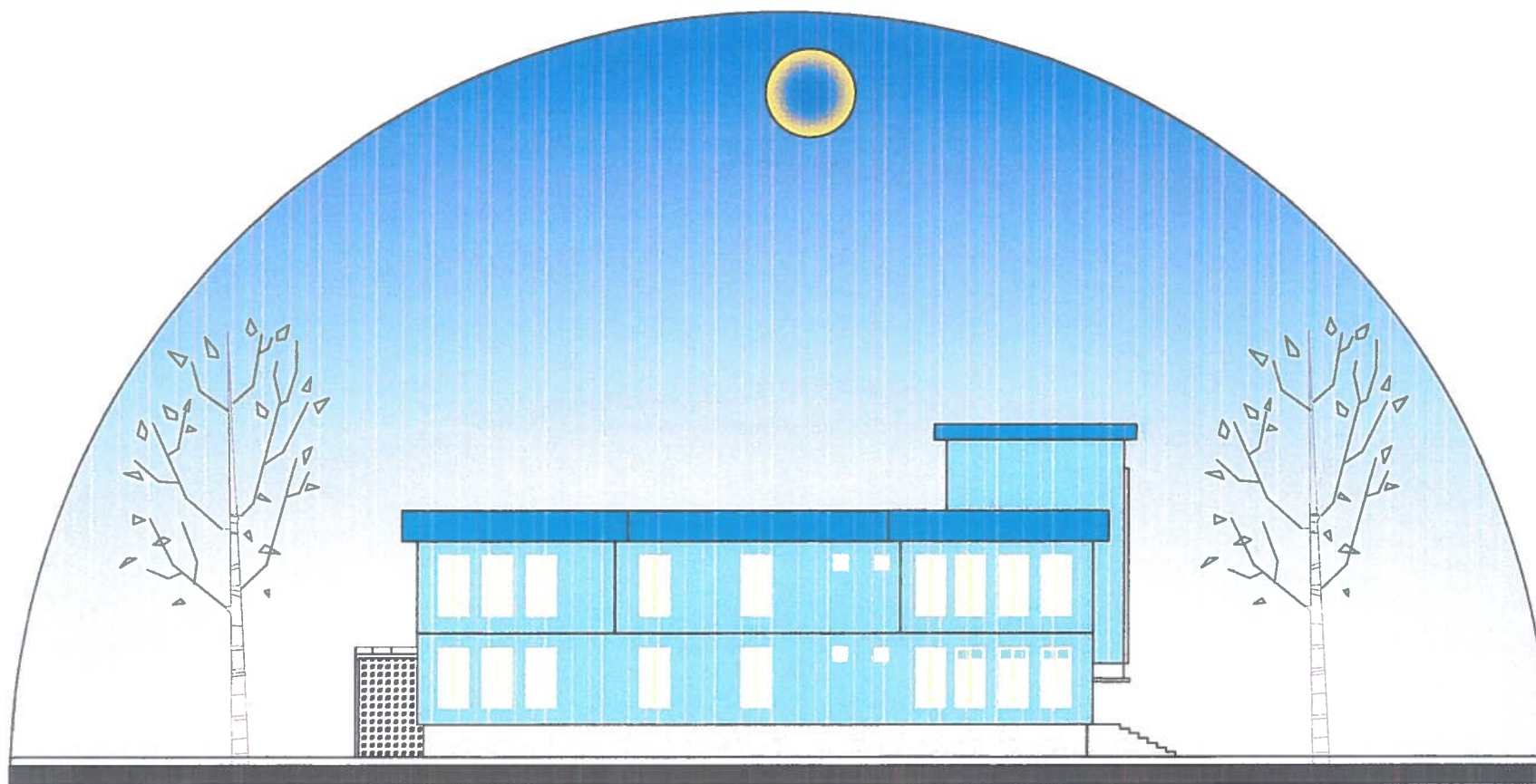
SURVEYED BY	PACO SURVEY TEAM
DESIGN BY	PACO DESIGN TEAM
DRAWING BY	PACO DESIGN TEAM
CHECKED BY	PACO DESIGN TEAM
APPROVED BY	UNHCR

Sub- project Name	Construction of two story building maternity ward in the existing CHC of Dasht-e-Archi district PARR
Section Name	General site plan
Project Code	
Drawing Title	Site Plan

DESIGNED SUBMITTAL	
SUBMITTAL DESCRIPTION	Architecture
DATE	19-DEC-20123

SCALE	1:100
PAPER SIZE	A-3
SHEET REFERENCE NO	MODEL OF PAGE 5





BACK ELEVATION



United Nation High
Commissioner
for Refugees
People Action For
Change organization
PACO

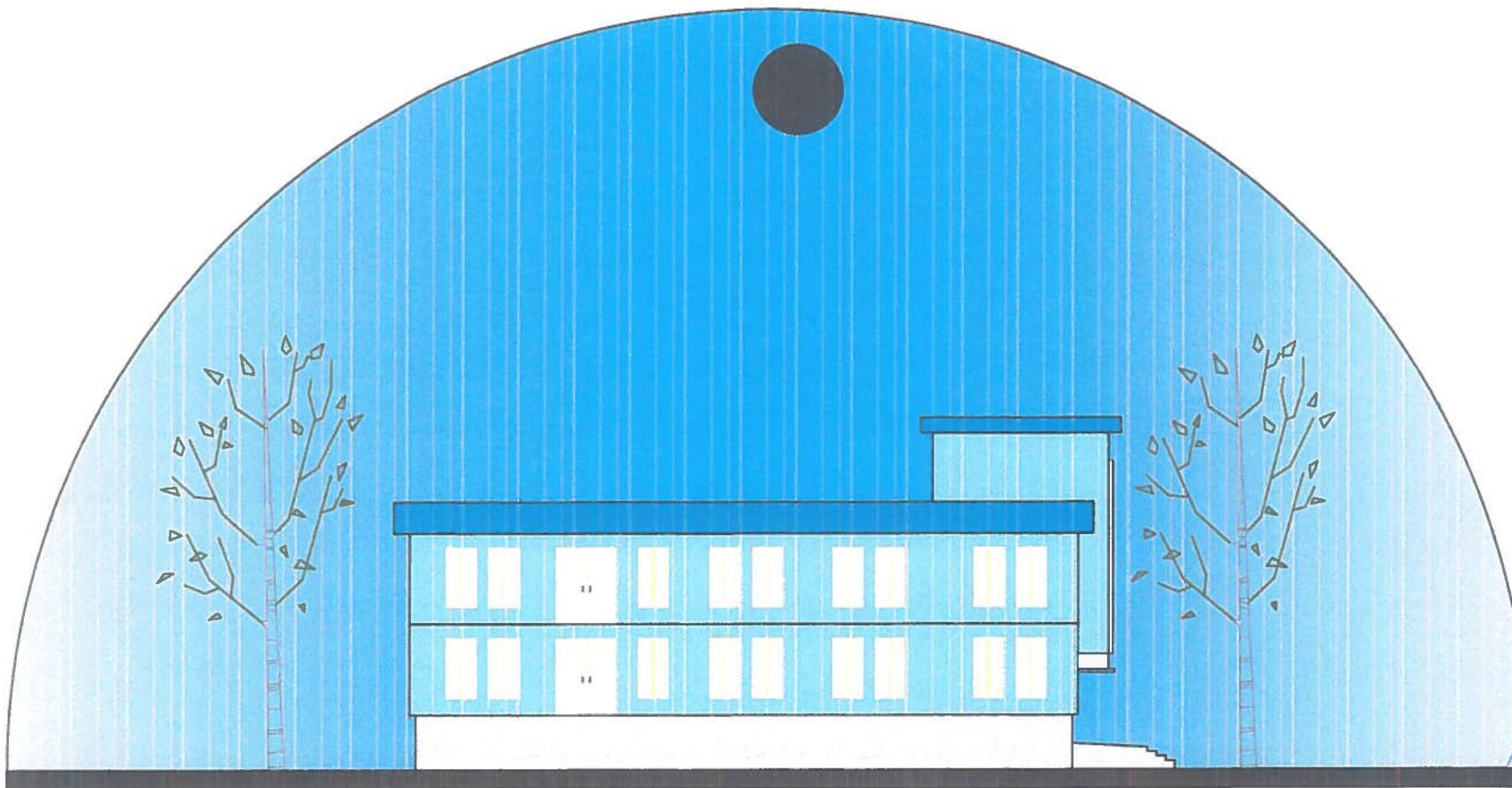


SURVEYED BY	PACO SURVEY TEAM
DESIGN BY	PACO DESIGN TEAM
DRAWING BY	PACO DESIGN TEAM
CHECKED BY	PACO DESIGN TEAM
APPROVED BY	UNHCR

Sub- project Name	Construction of two story building maternity ward in the existing CHC of Dasht-e-Archi district PARR
Section Name	Elevation
Project Code	
Drawing Title	Back side elevation

DESIGNED SUBMITTAL	
SUBMITTAL DESCRIPTION	Architecture
DATE	19-DEC-20123

SCALE 1:100
PAPER SIZE A-3
SHEET REFERENCE NO MODEL OF PAGE 9



FRONT ELEVATION

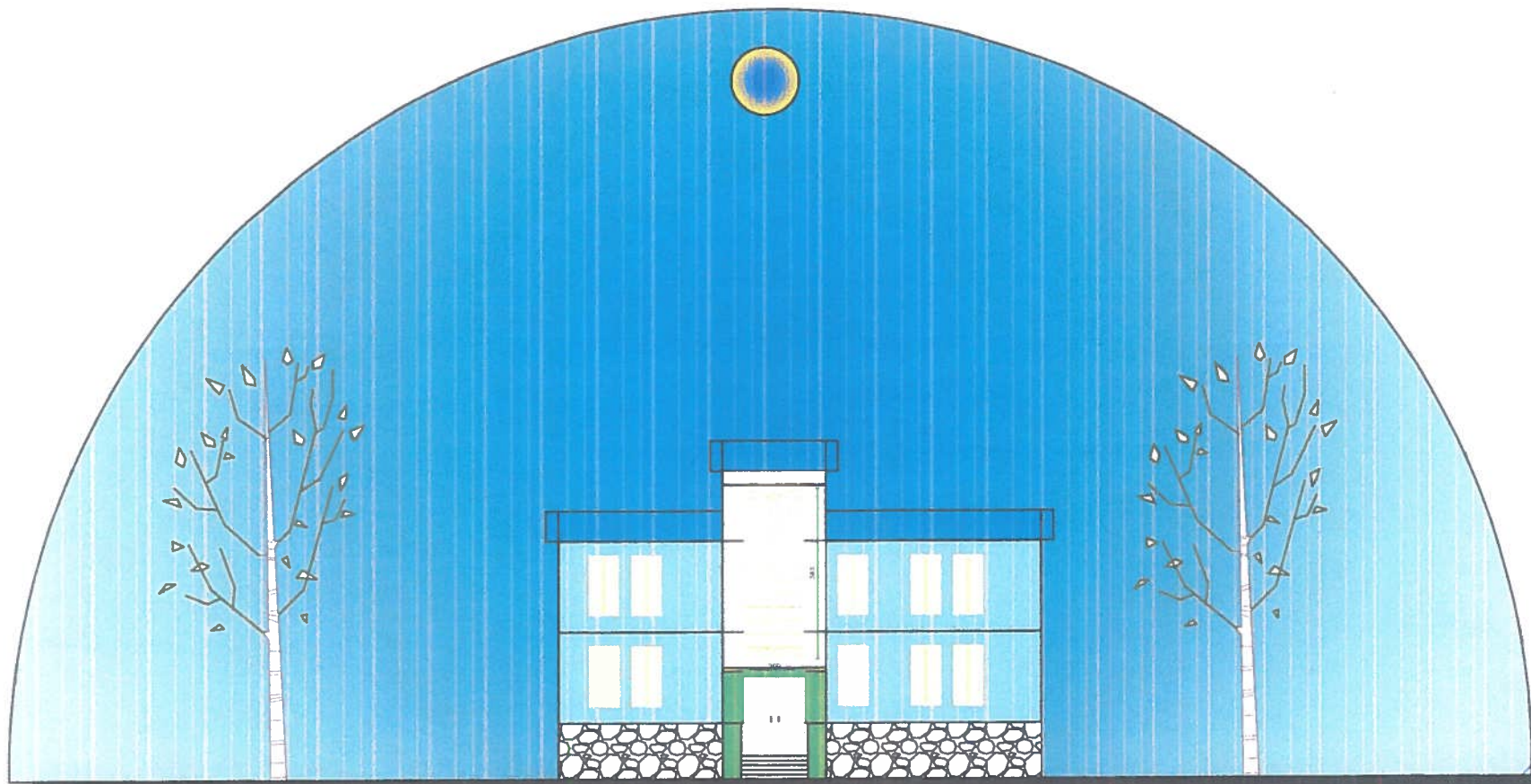


United Nation High
Commissioner
for Refugees

People Action For
Change organization
PACO



SURVEYED BY	PACO SURVEY TEAM	Sub- project Name	Construction of two story building maternity ward in the existing CHC of Dasht-e-Archi district PARR	DESIGNED SUBMITTAL		SCALE 1:100
DESIGN BY	PACO DESIGN TEAM	Section Name	Elevation	SUBMITTAL DESCRIPTION	Architecture	PAPER SIZE A-3
DRAWING BY	PACO DESIGN TEAM	Project Code		DATE	19-DEC-20123	SHEET REFERENCE NO MODEL OF PAGE 8
CHECKED BY	PACO DESIGN TEAM	Drawing Title	Front Elevation			
APPROVED BY	UNHCR					



SIDE ELEVATION



United Nation High
Commissioner
for Refugees
People Action For
Change organization
PACO

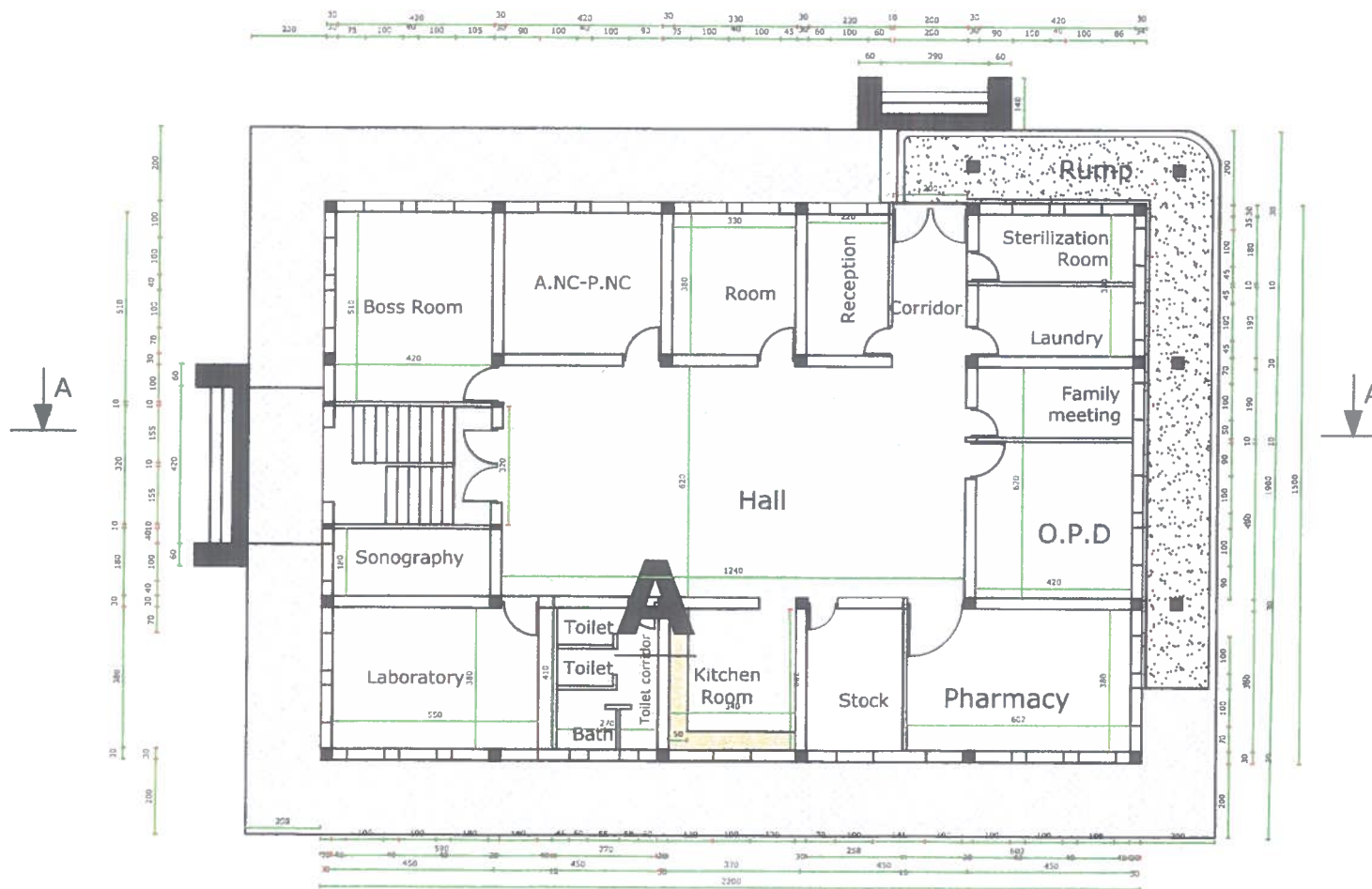


SURVEYED BY	PACO SURVEY TEAM
DESIGN BY	PACO DESIGN TEAM
DRAWING BY	PACO DESIGN TEAM
CHECKED BY	PACO DESIGN TEAM
APPROVED BY	UNHCR

Sub- project Name	Construction of two story building maternity ward in the existing CHC of Dasht-e-Archl district PARR
Section Name	Elevation
Project Code	
Drawing Title	Front side Elevation

DESIGNED SUBMITTAL	
SUBMITTAL DESCRIPTION	Architecture
DATE	19-DEC-20123

SCALE
1:100
PAPER SIZE A-3
SHEET REFERENCE NO
MODEL OF PAGE 10



FIRST FLOOR PLAN



United Nation High
Commissioner
for Refugees
People Action For
Change organization
PACO



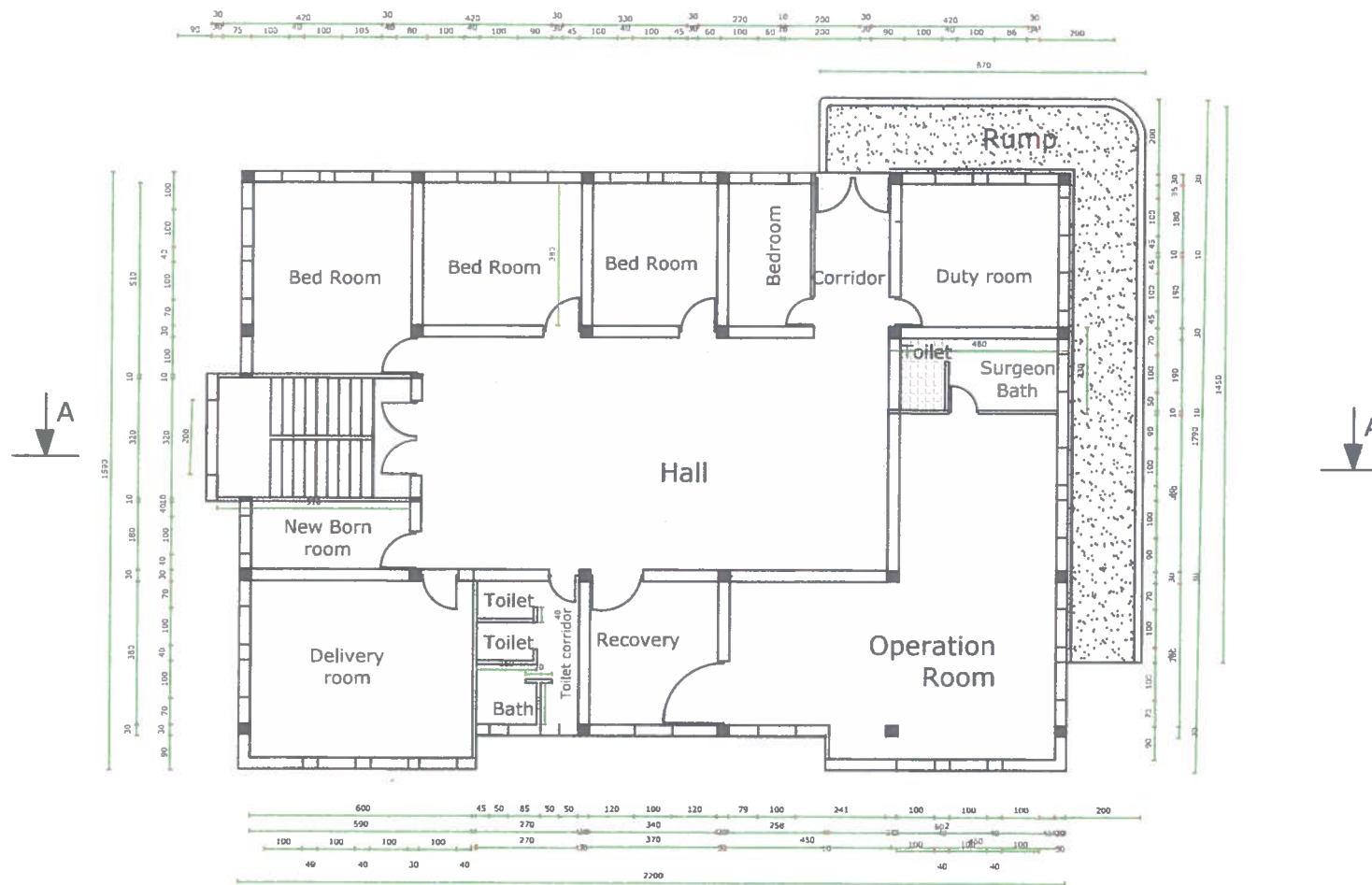
SURVEYED BY	PACO SURVEY TEAM
DESIGN BY	PACO DESIGN TEAM
DRAWING BY	PACO DESIGN TEAM
CHECKED BY	PACO DESIGN TEAM
APPROVED BY	UNHCR

Sub- project Name	Construction of two story building maternity ward in the existing CHC of Dasht-e-Archi district PARR
Section Name	Plan
Project Code	
Drawing Title	First floor Plan

DESIGNED SUBMITTAL	
SUBMITTAL DESCRIPTION	Architecture
DATE	19-DEC-20123

SCALE
1:100
PAPER SIZE A-3
SHEET REFERENCE NO
MODEL OF PAGE 6





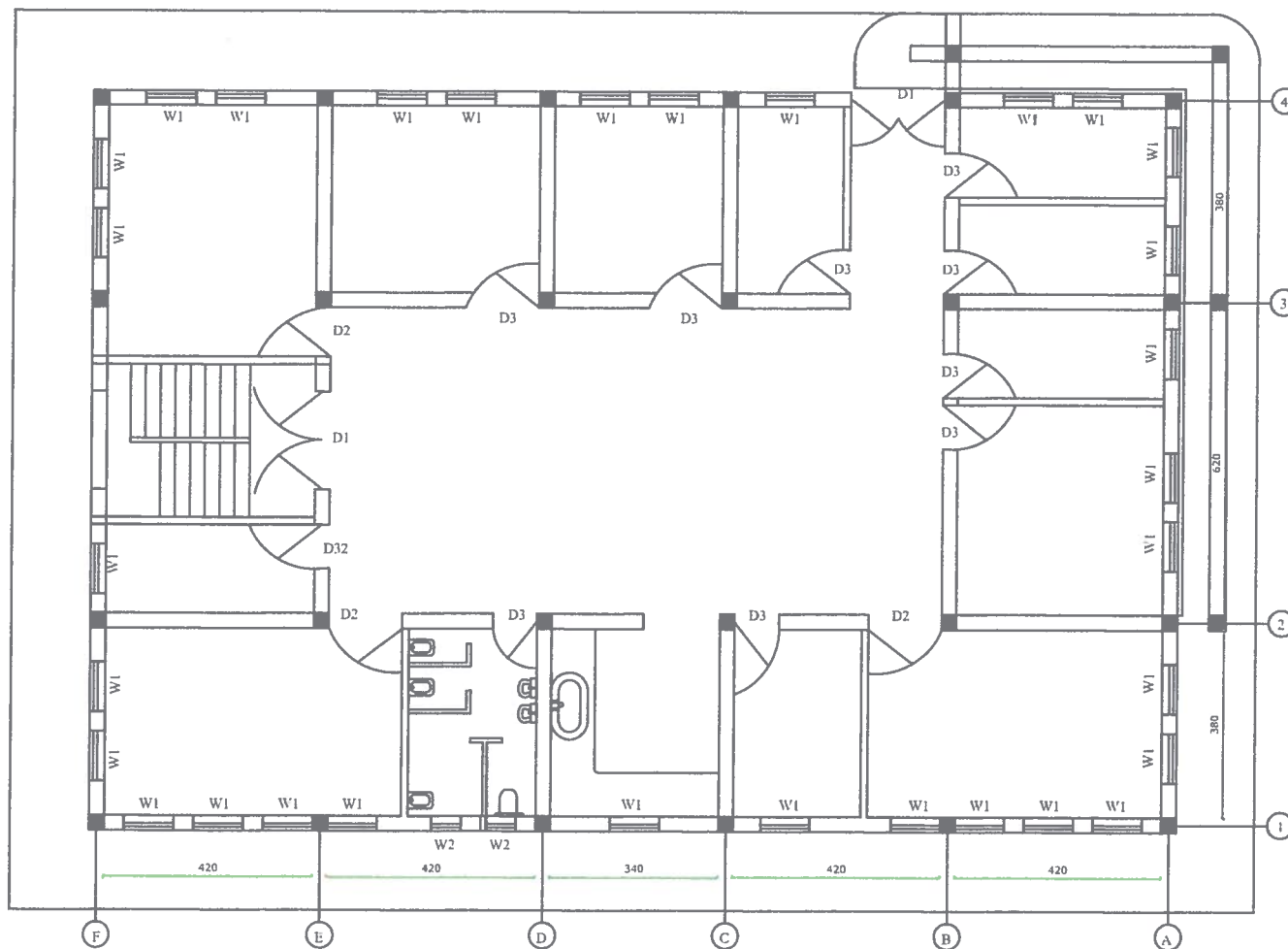
SECOND FLOOR PLAN



United Nation High
Commissioner
for Refugees
People Action For
Change organization
PACO



SURVEYED BY	PACO SURVEY TEAM	Sub- project Name	Construction of two story building maternity ward in the existing CHC of Dasht-e-Archi district PARR	DESIGNED SUBMITTAL		SCALE 1:100
DESIGN BY	PACO DESIGN TEAM	Section Name	Plan	SUBMITTAL DESCRIPTION	Architecture	PAPER SIZE A-3
DRAWING BY	PACO DESIGN TEAM	Project Code		DATE	19-DEC-20123	SHEET REFERENCE NO MODEL OF PAGE 7
CHECKED BY	PACO DESIGN TEAM	Drawing Title	Second floor Plan			
APPROVED BY	UNHCR					



WINDOWS & DOORS LOCATION



United Nation High
Commissioner
for Refugees
People Action For
Change organization
PACO



SURVEYED BY	PACO SURVEY TEAM
DESIGN BY	PACO DESIGN TEAM
DRAWING BY	PACO DESIGN TEAM
CHECKED BY	PACO DESIGN TEAM
APPROVED BY	UNHCR

Sub- project Name	Construction of two story building maternity ward in the existing CHC of Dasht-e-Archi district PARR
Section Name	W and D location
Project Code	
Drawing Title	windows and doors location

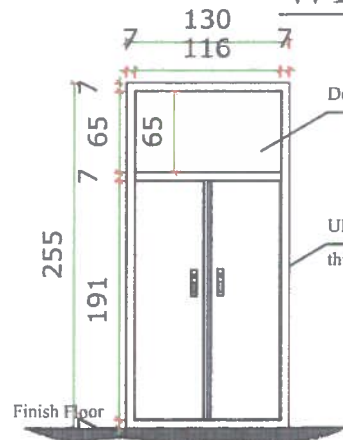
DESIGNED SUBMITTAL	
SUBMITTAL DESCRIPTION	Architecture
DATE	19-DEC-20123

SCALE
1:100

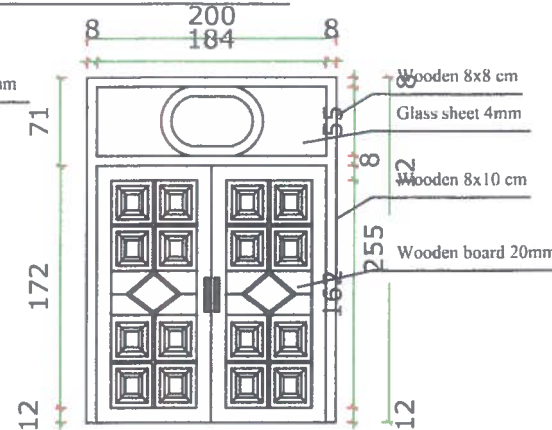
PAPER SIZE A-3

SHEET REFERENCE NO
MODEL OF PAGE 12

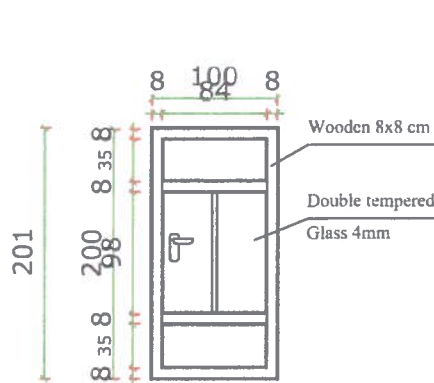
WINDOWS & DOORS



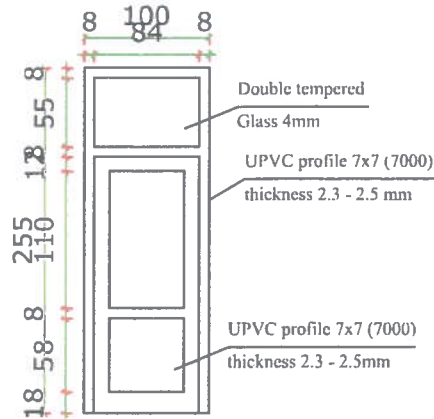
Door 2, n = 6



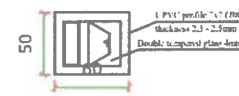
Door 1, n = 5



Window 1, n = 62



Door 3, n = 20



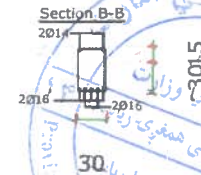
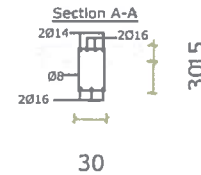
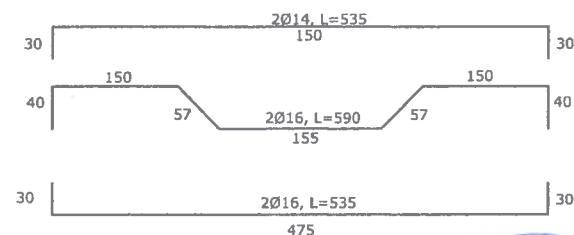
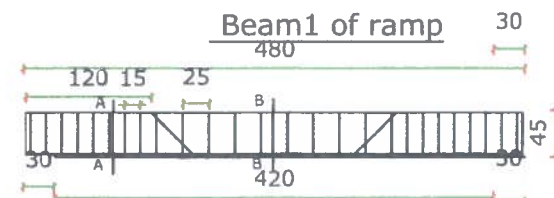
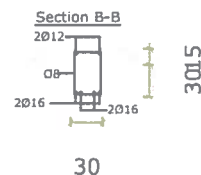
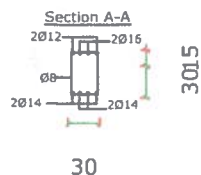
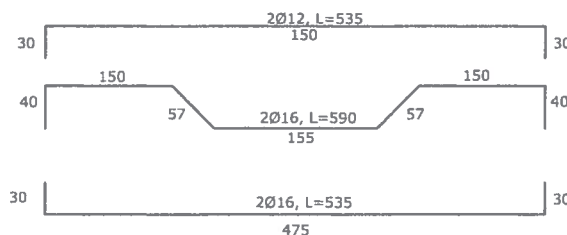
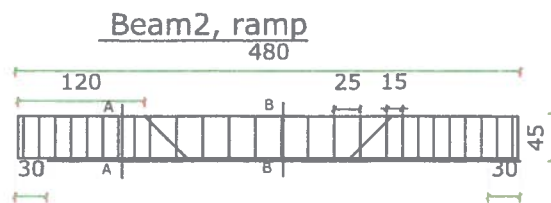
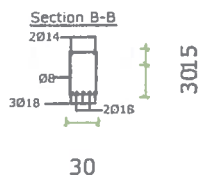
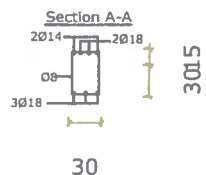
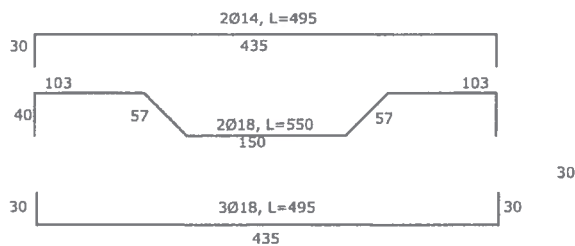
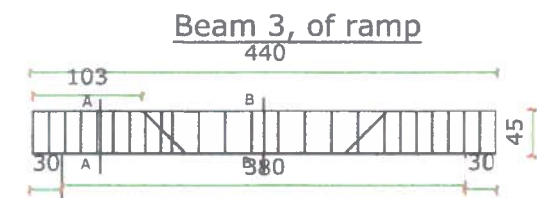
Window 2, n = 4



United Nation High
Commissioner
for Refugees
People Action for
Change organization
PACO



SURVEYED BY	PACO SURVEY TEAM	Sub- project Name	Construction of two story building maternity ward in the existing CHC of Dasht-e-Archi district PARR	DESIGNED SUBMITTAL		SCALE 1:100
DESIGN BY	PACO DESIGN TEAM	Section Name	Detailing	SUBMITTAL DESCRIPTION	Architecture	PAPER SIZE A-3
DRAWING BY	PACO DESIGN TEAM	Project Code		DATE	19-DEC-20123	SHEET REFERENCE NO MODEL OF PAGE 13
CHECKED BY	PACO DESIGN TEAM	Drawing Title	windows and doors detailing			
APPROVED BY	UNHCR					



Reinforcement cover 2.5 cm and Mark of Concrete is 250kg/cm²



United Nation High
Commissioner
for Refugees
People Action For
Change organization
PACO

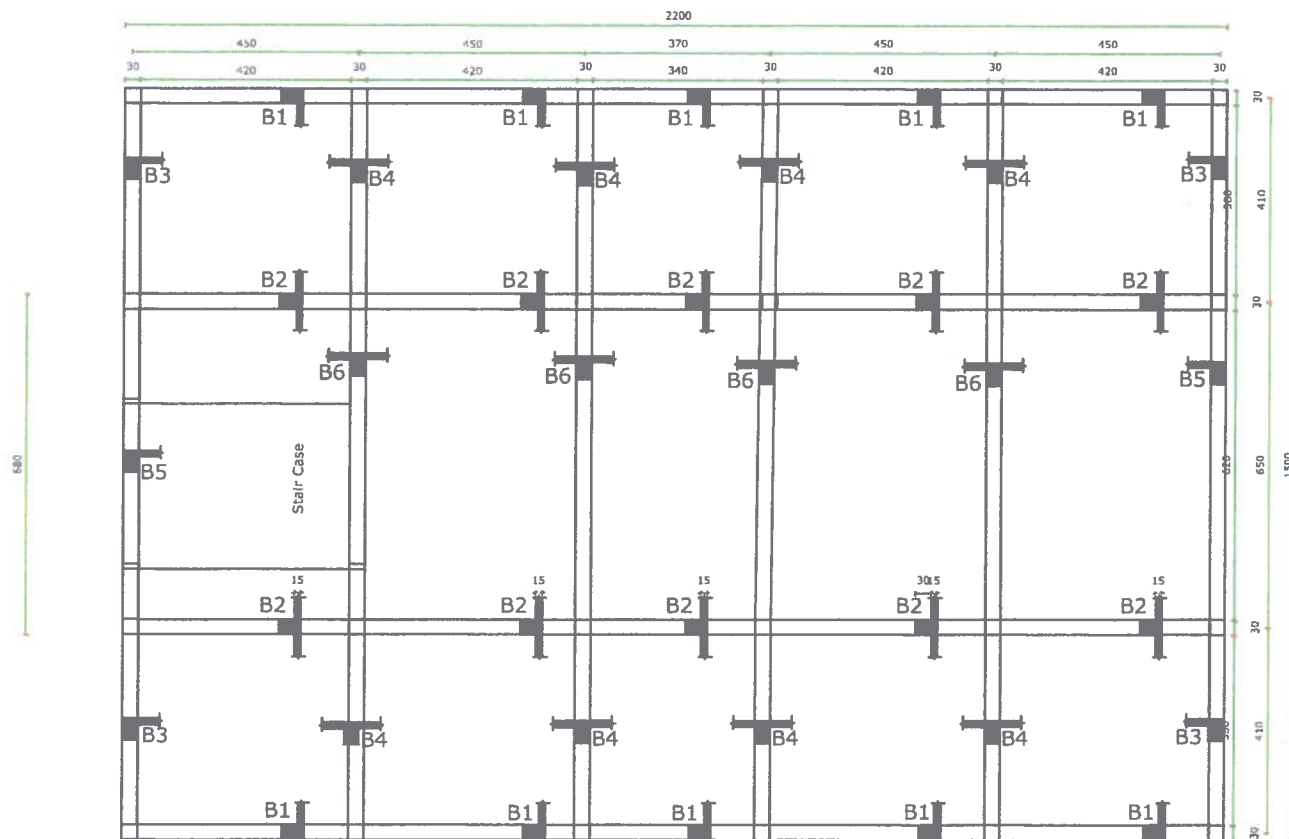


SURVEYED BY	PACO SURVEY TEAM
DESIGN BY	PACO DESIGN TEAM
DRAWING BY	PACO DESIGN TEAM
CHECKED BY	PACO DESIGN TEAM
APPROVED BY	UNHCR

Sub- project Name	Construction of two story building maternity ward in the existing CHC of Dasht-e-Archi district PARR
Section Name	Reinforcement
Project Code	
Drawing Title	Beam Reinforcement

DESIGNED SUBMITTAL	
SUBMITTAL DESCRIPTION	Beam Reinforcement
DATE	19-DEC-20123

SCALE 1:100
PAPER SIZE A-3
SHEET REFERENCE NO MODEL OF PAGE 16



PLAN OF BEAMS

Mark of concrete 250kg/cm²



United Nation High
Commissioner
for Refugees

People Action For
Change organization
PACO



SURVEYED BY	PACO SURVEY TEAM
DESIGN BY	PACO DESIGN TEAM
DRAWING BY	PACO DESIGN TEAM
CHECKED BY	PACO DESIGN TEAM
APPROVED BY	UNHCR

Sub- project Name	Construction of two story building maternity ward in the existing CHC of Dasht-e-Archi district PARR
Section Name	Shuttering
Project Code	
Drawing Title	Plan of Beam

DESIGNED SUBMITTAL

SUBMITTAL DESCRIPTION Structure

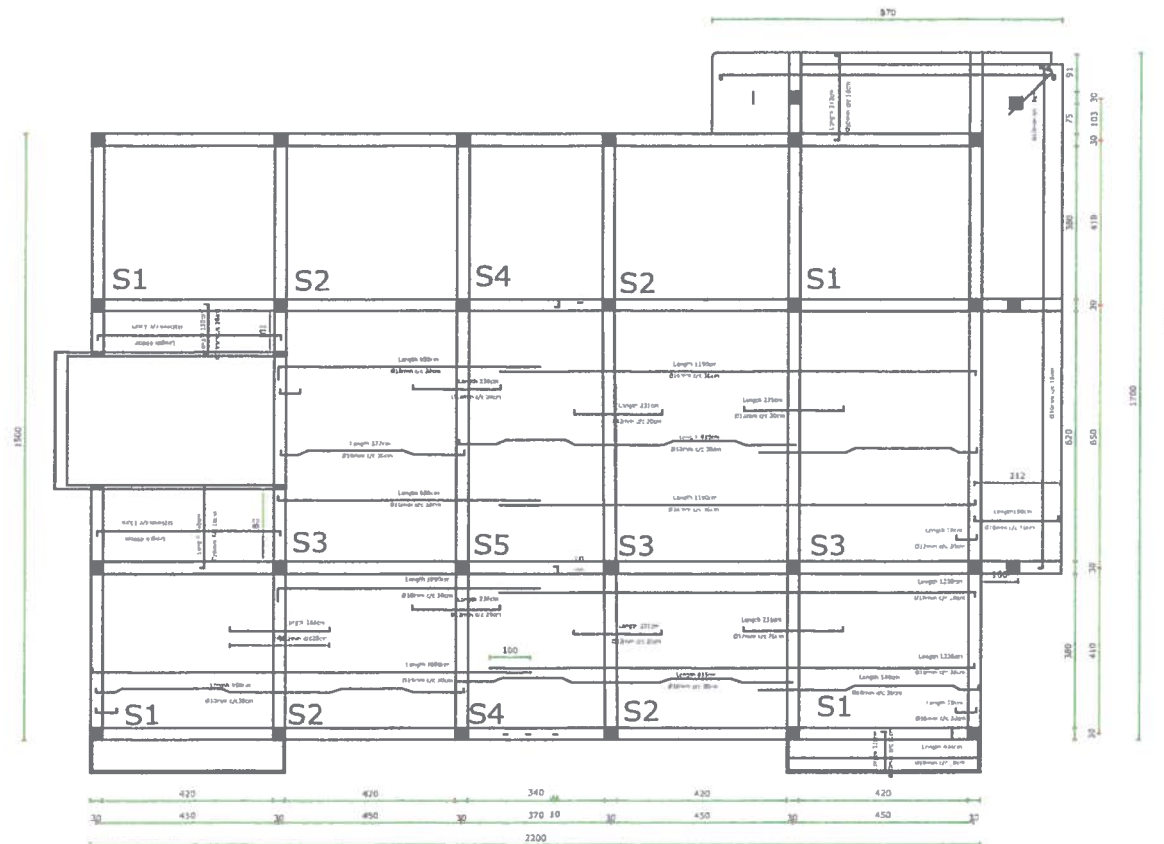
DATE

19-DEC-20123

SCALE
1:100

PAPER SIZE A-3

SHEET REFERENCE NO
MODEL OF PAGE 15



Second Long side Reinforcement of slab

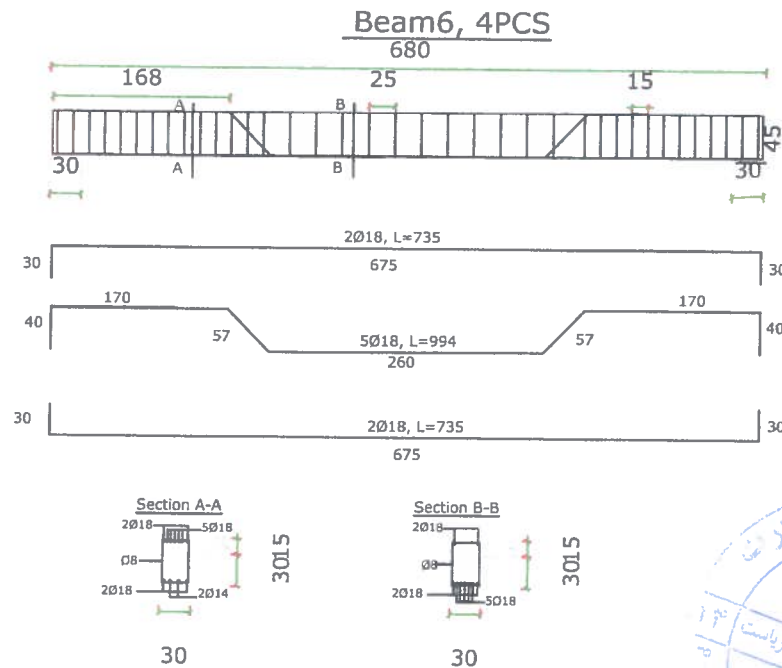
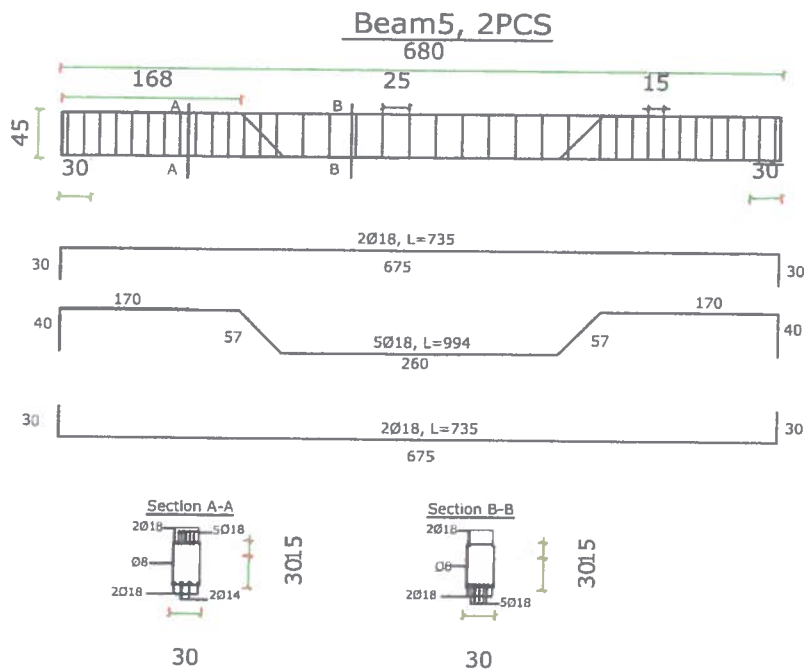
Reinforcement cover 2.5 cm and Mark of Concrete is 250kg/cm²



United Nation High
Commissioner
for Refugees
People Action For
Change organization
PACO



SURVEYED BY	PACO SURVEY TEAM	Sub- project Name	Construction of two story building maternity ward in the existing CHC of Dasht-e-Archi district PARR	DESIGNED SUBMITTAL		SCALE 1:100
DESIGN BY	PACO DESIGN TEAM	Section Name	Reinforcement	SUBMITTAL DESCRIPTION	Structure	PAPER SIZE A-3
DRAWING BY	PACO DESIGN TEAM	Project Code		DATE	19-DEC-20123	SHEET REFERENCE NO MODEL OF PAGE 17
CHECKED BY	PACO DESIGN TEAM	Drawing Title	Long side reinforcement of slab			
APPROVED BY	UNHCR					



Reinforcement cover 2.5 cm and Mark of Concrete is 250kg/cm²



United Nation High
Commissioner
for Refugees
People Action For
Change organization
PACO



SURVEYED BY	PACO SURVEY TEAM
DESIGN BY	PACO DESIGN TEAM
DRAWING BY	PACO DESIGN TEAM
CHECKED BY	PACO DESIGN TEAM
APPROVED BY	UNHCR

Sub- project Name	Construction of two story building maternity ward in the existing CHC of Dasht-e-Archi district PARR
Section Name	Reinforcement
Project Code	
Drawing Title	Beam Reinforcement

DESIGNED SUBMITTAL	
SUBMITTAL DESCRIPTION	Structure
DATE	19-DEC-20123

SCALE 1:100
PAPER SIZE A-3
SHEET REFERENCE NO MODEL OF PAGE 18

Technical drawing of a stepped shaft with three views: front, top, and side.

Front View: Shows a shaft with a total length of 410 mm, a diameter of 20 mm, and a total height of 45 mm. It has a central section of 103 mm diameter and two end sections of 30 mm diameter. The shaft is divided into sections by points A and B.

Top View: Shows the shaft's profile with a total length of 495 mm and a central section of 435 mm. The shaft has a total height of 30 mm and a central section of 103 mm diameter.

Side View: Shows the shaft's profile with a total length of 550 mm and a central section of 150 mm. The shaft has a total height of 30 mm and a central section of 103 mm diameter.

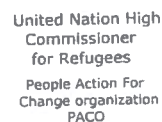
Technical drawing of a mechanical part showing three views: front, top, and side.

Front View: A rectangle with a width of 103 and a height of 45. It features a central section with a width of 410 and a height of 30. The top view shows a rectangular base with a width of 103 and a length of 495. It has a central section with a width of 435 and a height of 30. The side view shows a profile with a total width of 103 and a total height of 45. It features a central section with a width of 410 and a height of 30. The drawing includes dimension lines and labels for various features.

Top View: A rectangle with a width of 103 and a length of 495. It features a central section with a width of 435 and a height of 30. The side view shows a profile with a total width of 103 and a total height of 45. It features a central section with a width of 410 and a height of 30. The drawing includes dimension lines and labels for various features.

Side View: A profile with a total width of 103 and a total height of 45. It features a central section with a width of 410 and a height of 30. The drawing includes dimension lines and labels for various features.

Technical drawing of a 3015 bearing. The drawing shows a cross-section of the bearing with the following dimensions: 2016 (outer diameter), Ø8 (inner diameter), 2016 (width), 3016 (inner diameter of the inner ring), and 3015 (overall width).



Sub- project Name	Construction of two story building maternity ward in the existing CHC of <u>Dasht-e-Archi district PARR</u>
Section Name	Reinforcement
Project Code	
Drawing Title	Beam Reinforcement

SCALE 1:100

PAPER SIZE A-3

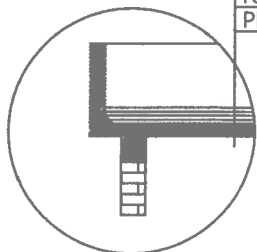
SHEET REFERENCE NO
MODEL OF PAGE 19

SCALE 1:100

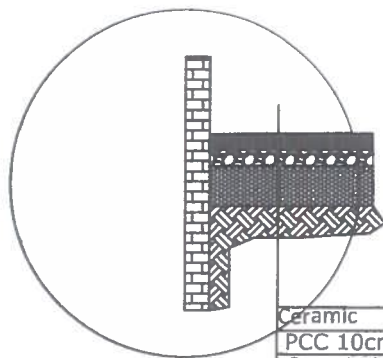
PAPER SIZE A-3

SHEET REFERENCE NO
MODEL OF PAGE 19

Mosaic
PCC 5cm
Isogam 2 layer
PCC 5cm
Pieces of burnt brick 10cm
RCC 15cm
Plaster 2.5cm

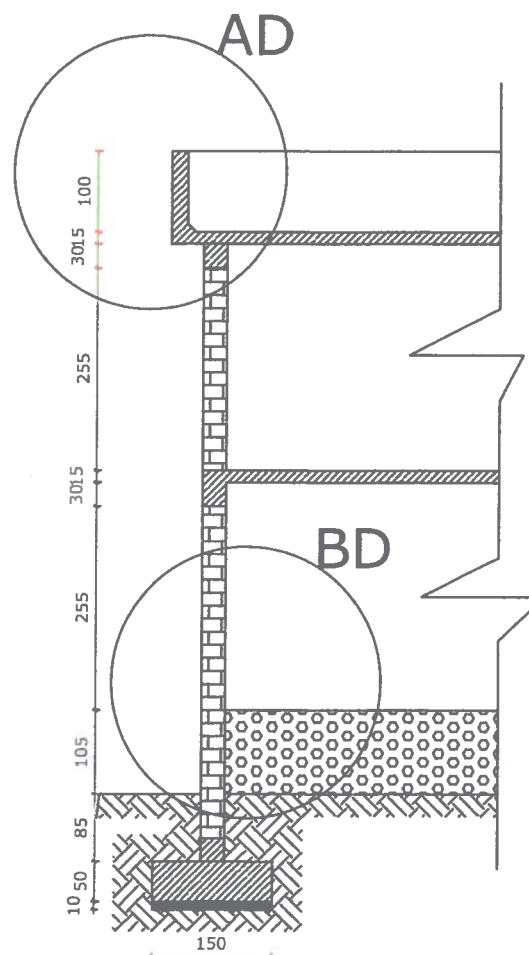


AD



Ceramic
PCC 10cm
Gravel 20cm
Compacted soil
Natural soil

BD



Section of Wall



United Nation High
Commissioner
for Refugees
People Action For
Change organization
PACO

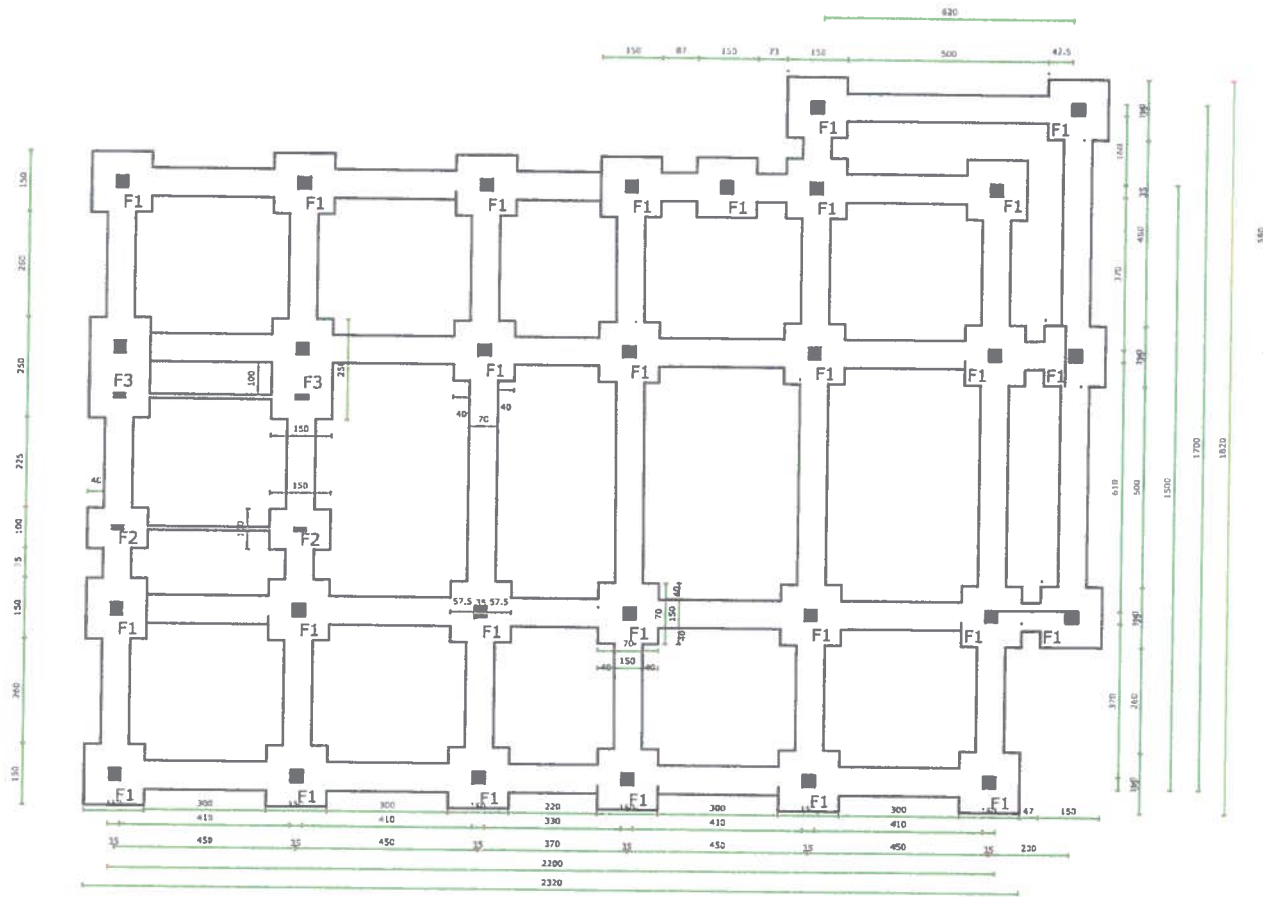


SURVEYED BY	PACO SURVEY TEAM
DESIGN BY	PACO DESIGN TEAM
DRAWING BY	PACO DESIGN TEAM
CHECKED BY	PACO DESIGN TEAM
APPROVED BY	UNHCR

Sub- project Name	Dashti Archi CHC Maternity two story building with components.
Section Name	Detail section
Project Code	
Drawing Title	Wall cross section and details

DESIGNED SUBMITTAL	
SUBMITTAL DESCRIPTION	Structure
DATE	19-DEC-20123

SCALE 1:100
PAPER SIZE A-3
SHEET REFERENCE NO MODEL OF PAGE 20



FOUNDATION PLAN (footing and stone masonry)

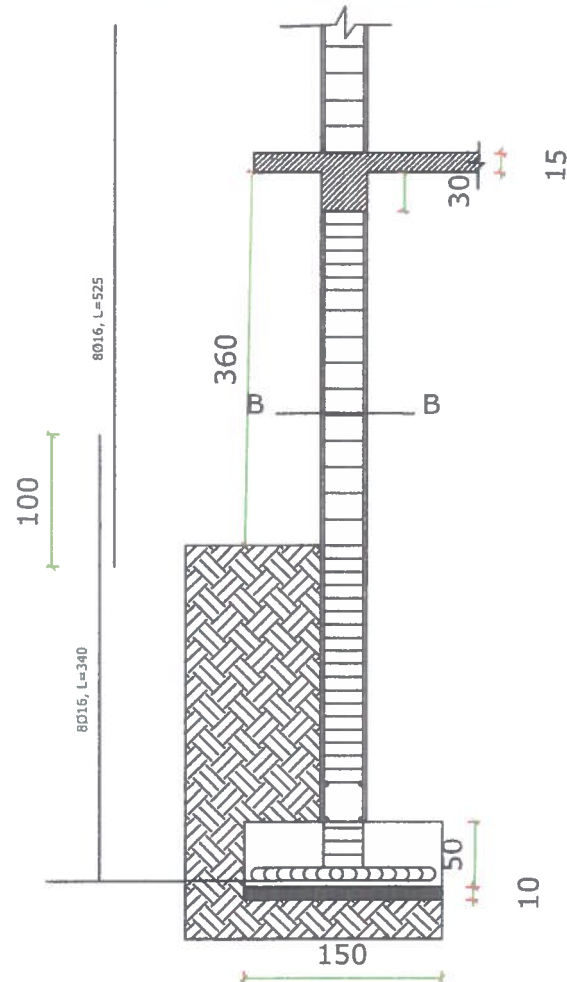
Reinforcement cover 2.5 cm and Mark of Concrete is 250kg/cm²



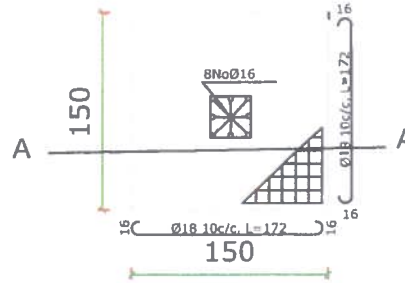
United Nation High
Commissioner
for Refugees
People Action For
Change organization
PACO



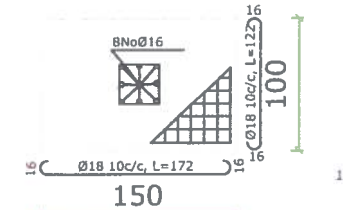
SURVEYED BY	PACO SURVEY TEAM	Sub- project Name	Construction of two story building maternity ward In the existing CHC of Dast-e-Archi district PARR	DESIGNED SUBMITTAL		SCALE 1:100
DESIGN BY	PACO DESIGN TEAM	Section Name	Foundation	SUBMITTAL DESCRIPTION	Structure	PAPER SIZE A-3
DRAWING BY	PACO DESIGN TEAM	Project Code		DATE	19-DEC-20123	SHEET REFERENCE NO MODEL OF PAGE 21
CHECKED BY	PACO DESIGN TEAM	Drawing Title	Foundation Plan			
APPROVED BY	UNHCR					



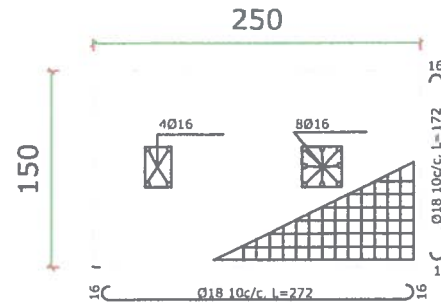
Section A-A



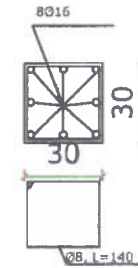
F1, 27 PCS



F2, 2 PCS



F3, 2 PCS



Section B-B



United Nation High
Commissioner
for Refugees
People Action For
Change organization
PACO



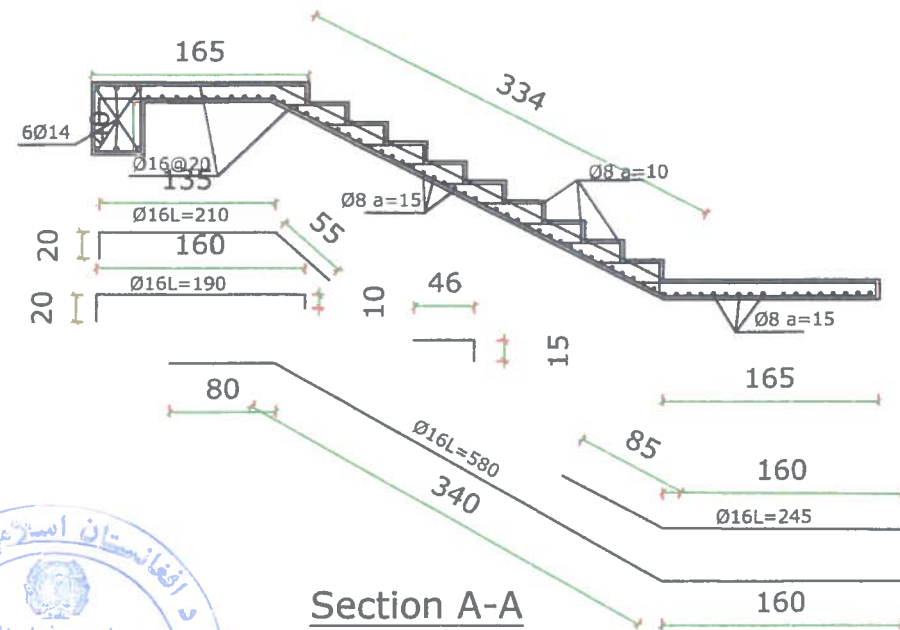
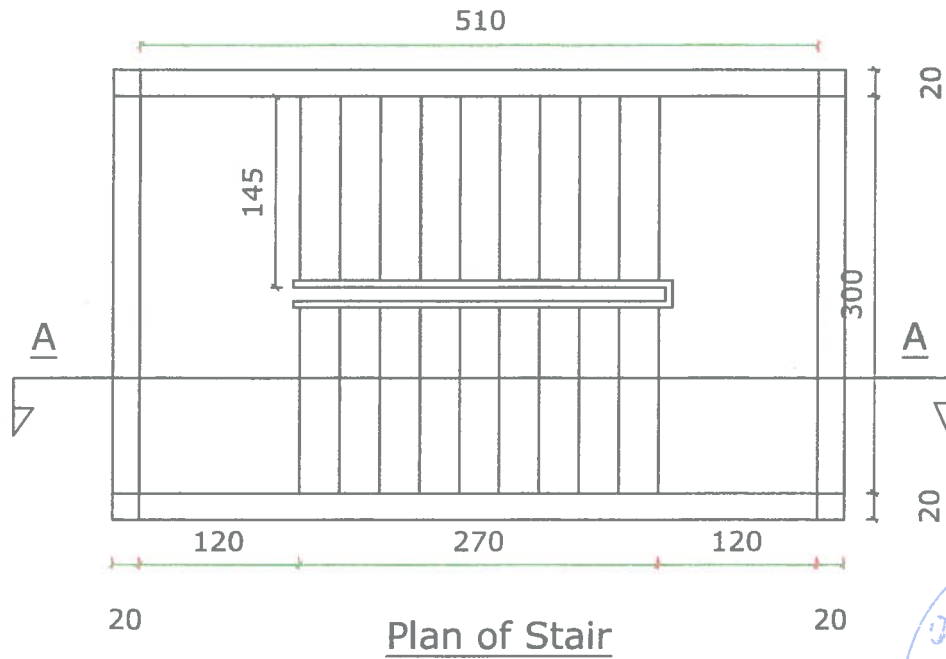
SURVEYED BY	PACO SURVEY TEAM
DESIGN BY	PACO DESIGN TEAM
DRAWING BY	PACO DESIGN TEAM
CHECKED BY	PACO DESIGN TEAM
APPROVED BY	UNHCR

Sub- project Name	Construction of two story building maternity ward in the existing CHC of Dasht-e-Archi district PARR
Section Name	Reinforcement
Project Code	
Drawing Title	Columns an foundation Reinforcement

DESIGNED SUBMITTAL	
SUBMITTAL DESCRIPTION	Structure
DATE	19-DEC-20123

SCALE 1:100
PAPER SIZE A-3
SHEET REFERENCE NO MODEL OF PAGE 22

STAIR REINFORCEMENT



United Nation High
Commissioner
for Refugees
People Action For
Change organization
PACO



SURVEYED BY	PACO SURVEY TEAM
DESIGN BY	PACO DESIGN TEAM
DRAWING BY	PACO DESIGN TEAM
CHECKED BY	PACO DESIGN TEAM
APPROVED BY	UNHCR

Sub- project Name	Construction of two story building maternity ward in the existing CHC of Dasht-e-Archi district PARR
Section Name	Reinforcement
Project Code	
Drawing Title	Stair Reinforcement

DESIGNED SUBMITTAL	
SUBMITTAL DESCRIPTION	Structure
DATE	19-DEC-20123

SCALE 1:100
PAPER SIZE A-3
SHEET REFERENCE NO MODEL OF PAGE 23

SLAB REINFORCEMENT TABLE

SLAB		BOTTOM REINF..		TOP REINF..		TOP construction Bars	BATTOM construction Bars
		Straight Bars	Bent up Bars	Right support	Left support		
S1	Long	Ø10@30cm c/c	Ø10@30cm c/c	Ø12@20cm c/c	Ø12@20cm c/c	Ø10@20cm c/c	Ø10@20cm c/c
	Short	Ø10@30cm c/c	Ø10@30cm c/c	Ø12@20cm c/c	Ø12@20cm c/c	Ø10@20cm c/c	Ø10@20cm c/c
S2	Long	Ø10@30cm c/c	Ø10@30cm c/c	Ø12@20cm c/c	Ø12@20cm c/c	Ø10@20cm c/c	Ø10@20cm c/c
	Short	Ø10@30cm c/c	Ø10@30cm c/c	Ø12@20cm c/c	Ø12@20cm c/c	Ø10@20cm c/c	Ø10@20cm c/c
S3	Long	Ø10@30cm c/c	Ø10@30cm c/c	Ø12@20cm c/c	Ø12@20cm c/c	Ø10@20cm c/c	Ø10@20cm c/c
	Short	Ø10@30cm c/c	Ø10@30cm c/c	Ø12@20cm c/c	Ø12@20cm c/c	Ø10@20cm c/c	Ø10@20cm c/c
S4	Long	Ø10@30cm c/c	Ø10@30cm c/c	Ø12@20cm c/c	Ø12@20cm c/c	Ø10@20cm c/c	Ø10@20cm c/c
	Short	Ø10@30cm c/c	Ø10@30cm c/c	Ø12@20cm c/c	Ø12@20cm c/c	Ø10@20cm c/c	Ø10@20cm c/c
S5	Long	Ø10@30cm c/c	Ø10@30cm c/c	Ø12@20cm c/c	Ø12@20cm c/c	Ø10@20cm c/c	Ø10@20cm c/c
	Short	Ø10@30cm c/c	Ø10@30cm c/c	Ø12@20cm c/c	Ø12@20cm c/c	Ø10@20cm c/c	Ø10@20cm c/c
S6	Long	Ø10@30cm c/c	Ø10@30cm c/c	Ø12@20cm c/c	Ø12@20cm c/c	Ø10@20cm c/c	Ø10@20cm c/c
	Short	Ø10@30cm c/c	Ø10@30cm c/c	Ø12@20cm c/c	Ø12@20cm c/c	Ø10@20cm c/c	Ø10@20cm c/c



United Nation High
Commissioner
for Refugees

People Action For
Change organization
PACO



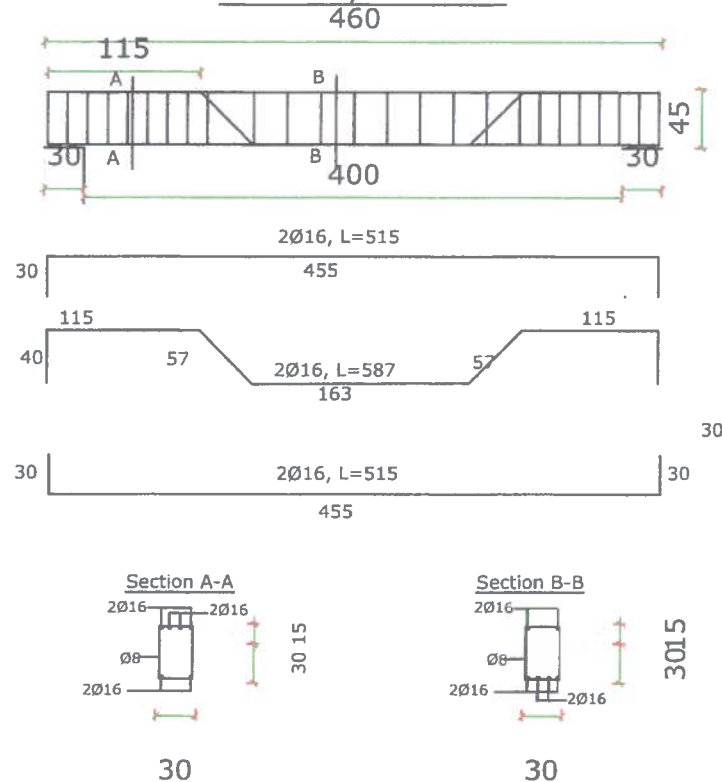
SURVEYED BY	PACO SURVEY TEAM
DESIGN BY	PACO DESIGN TEAM
DRAWING BY	PACO DESIGN TEAM
CHECKED BY	PACO DESIGN TEAM
APPROVED BY	UNHCR

Sub- project Name	Construction of two story building maternity ward in the existing CHC of Dasht-e-Archi district PARR
Section Name	Reinforcement
Project Code	
Drawing Title	Slabs Reinforcement

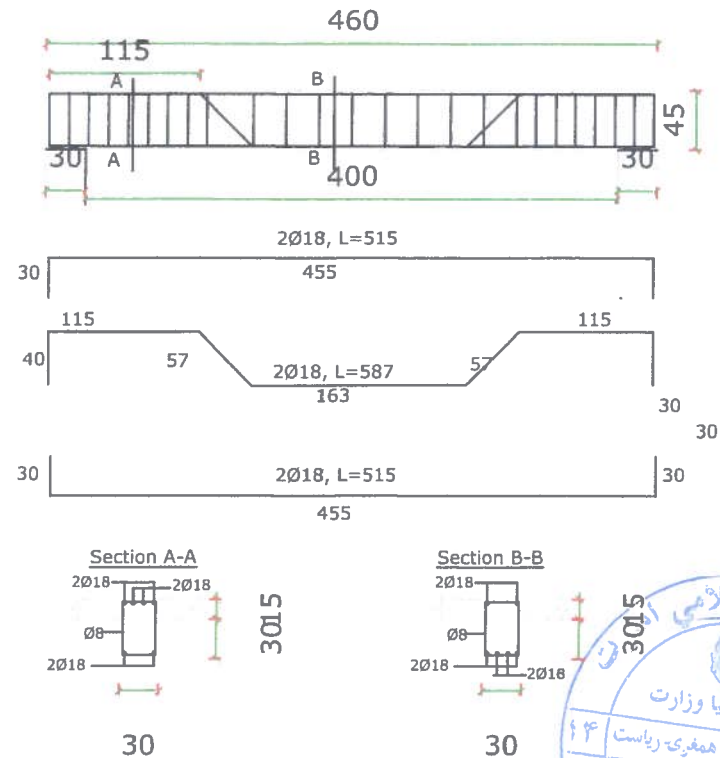
DESIGNED SUBMITTAL	
SUBMITTAL DESCRIPTION	Structure
DATE	19-DEC-20123

SCALE 1:100
PAPER SIZE A-3
SHEET REFERENCE NO MODEL OF PAGE 24

Beam1, 10 PCS



Beam2, 10 PCS



Reinforcement cover 2.5 cm and Mark of Concrete is 250kg/cm²



United Nation High
Commissioner
for Refugees

People Action For
Change organization
PACO



SURVEYED BY	PACO SURVEY TEAM	Sub- project Name	Construction of two story building maternity ward in the existing CHC of Dasht-e-Archi district PARR	DESIGNED SUBMITTAL		SCALE 1:100
DESIGN BY	PACO DESIGN TEAM	Section Name	Reinforcement	SUBMITTAL DESCRIPTION	Structure	PAPER SIZE A-3
DRAWING BY	PACO DESIGN TEAM	Project Code		DATE	19-DEC-20123	SHEET REFERENCE NO MODEL OF PAGE 25
CHECKED BY	PACO DESIGN TEAM	Drawing Title	Beam Reinforcement			
APPROVED BY	UNHCR					

GENERAL INSTRUCTION

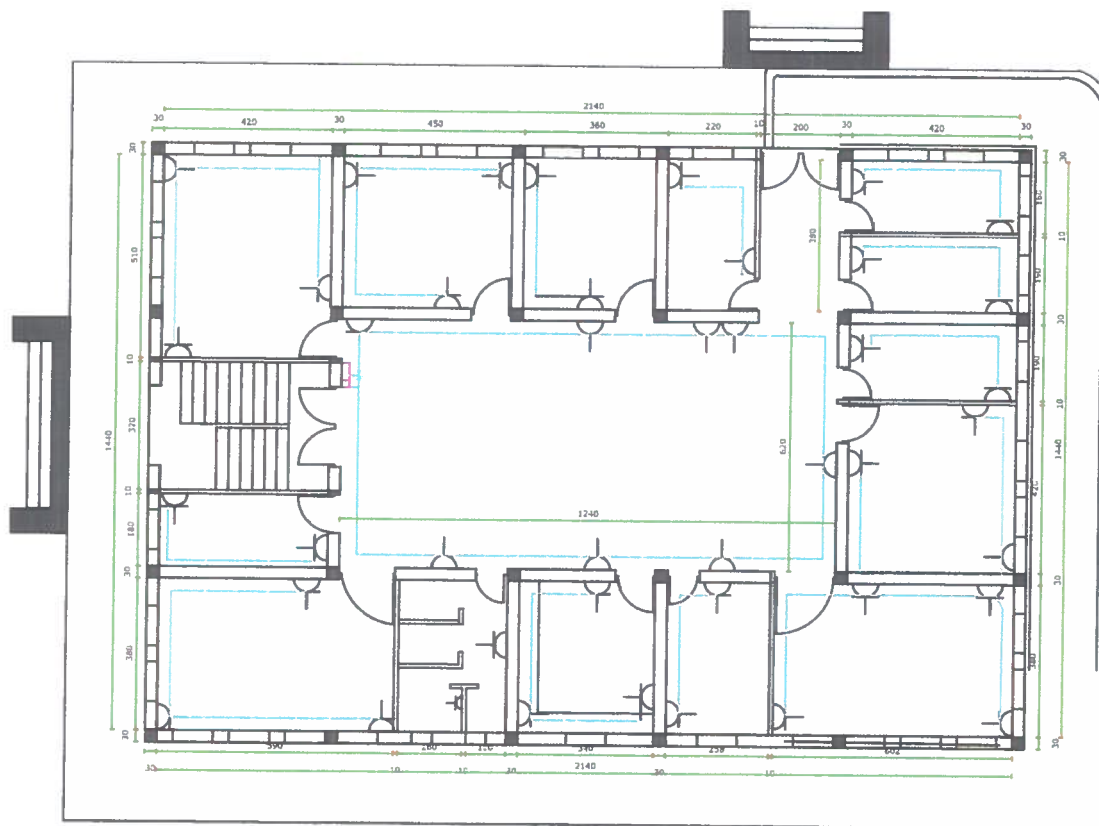
- 1- All PCC under foundation to have cement sand and aggregate . Ratio 1:2:4
- 2-Sand or fine Aggregate shall be free from salt, alkali, calcium sulphate or vegetable and it shall not contain more than 0.5% by weight of clay.
- 3- coarse aggregate shall consist of crushed gravel and the maximum size of aggregate is 20mm
- 4- concrete is poured and vibrate in such away to form a solid compacted concrete.
- 5- the concrete is to be cured for 14 days and shuttering removed after 21 days.
- 6- RCC should have cylinder strength $F_c' = 3\text{ksi} (211\text{kg/cm}^2)$ strength of other concretes are shown in the drawings in terms of proportioning by volume.
- 7- steel bars should have yield strength $f_y = 40\text{ksi} (2800\text{kg/cm}^2)$. All main bars are deformed bars and secondary bars plain mild steel bars.



United Nation High
Commissioner
for Refugees
People Action For
Change organization
PACO



SURVEYED BY	PACO SURVEY TEAM	Sub- project Name	Construction of two story building maternity ward in the existing CHC of Dasht-e-Archi district PARR	DESIGNED SUBMITTAL		SCALE 1:100
DESIGN BY	PACO DESIGN TEAM	Section Name	Structure General Notes	SUBMITTAL DESCRIPTION	Structure	PAPER SIZE A-3
DRAWING BY	PACO DESIGN TEAM	Project Code		DATE	19-DEC-20123	SHEET REFERENCE NO MODEL OF PAGE 26
CHECKED BY	PACO DESIGN TEAM	Drawing Title	Instruction			
APPROVED BY	UNHCR					



FIRST FLOOR POWER PLAN

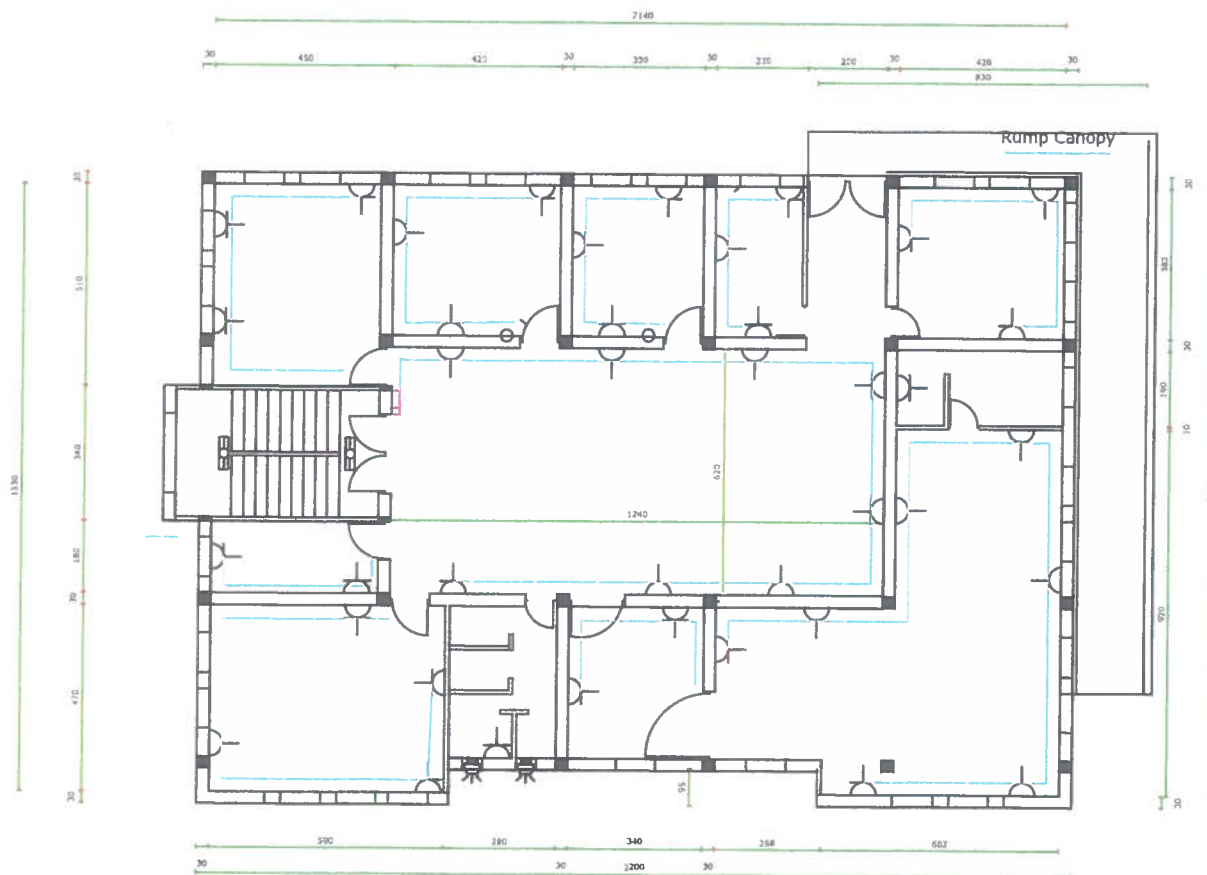


United Nation High
Commissioner
for Refugees

People Action For
Change organization
PACO



SURVEYED BY	PACO SURVEY TEAM	Sub- project Name	Construction of two story building maternity ward in the existing CHC of Dasht-e-Archi district PARR	DESIGNED SUBMITTAL		SCALE
DESIGN BY	PACO DESIGN TEAM	Section Name	Receptacles and switches plan	SUBMITTAL DESCRIPTION	Electrical	1:100
DRAWING BY	PACO DESIGN TEAM	Project Code		DATE	19-DEC-20123	PAPER SIZE A-3
CHECKED BY	PACO DESIGN TEAM	Drawing Title	First floor Power Plan			SHEET REFERENCE NO MODEL OF PAGE 27
APPROVED BY	UNHCR					



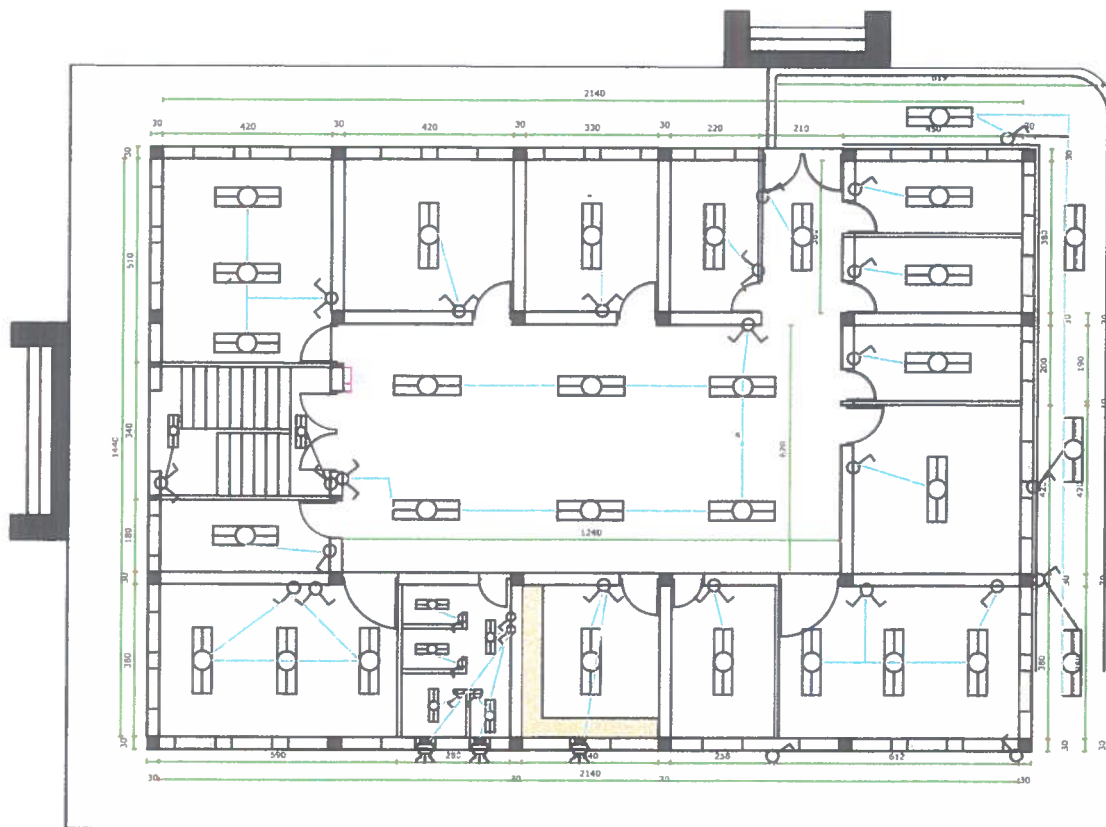
SECOND FLOOR POWER PLAN



United Nation High
Commissioner
for Refugees
People Action For
Change organization
PACO



SURVEYED BY	PACO SURVEY TEAM	Sub- project Name	Construction of two story building maternity ward in the existing CHC of Dasht-e-Archi district PARR	DESIGNED SUBMITTAL		SCALE 1:100
DESIGN BY	PACO DESIGN TEAM	Section Name	Receptacles and switches	SUBMITTAL DESCRIPTION	Electrical	PAPER SIZE A-3
DRAWING BY	PACO DESIGN TEAM	Project Code		DATE	19-DEC-20123	SHEET REFERENCE NO MODEL OF PAGE 28
CHECKED BY	PACO DESIGN TEAM	Drawing Title	Second floor Power Plan			
APPROVED BY	UNHCR					



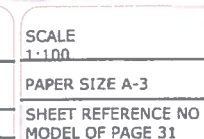
FIRST FLOOR LIGHTING PLAN

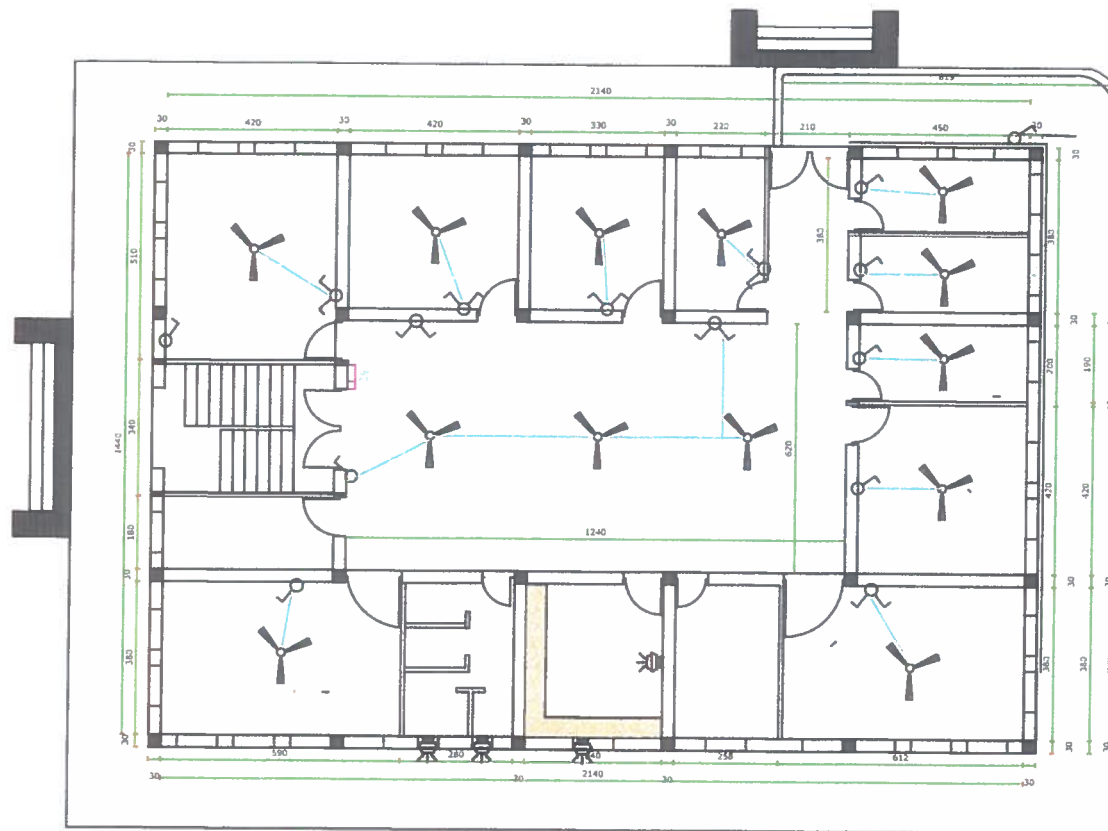


United Nation High
Commissioner
for Refugees
People Action For
Change organization
PACO



SURVEYED BY	PACO SURVEY TEAM	Sub- project Name	Construction of two story building maternity ward in the existing CHC of Dasht-e-Archi district PARR	DESIGNED SUBMITTAL		SCALE	1:100
DESIGN BY	PACO DESIGN TEAM	Section Name	Lighting	SUBMITTAL DESCRIPTION	Electrical	PAPER SIZE	A-3
DRAWING BY	PACO DESIGN TEAM	Project Code		DATE	19-DEC-20123	SHEET REFERENCE	NO
CHECKED BY	PACO DESIGN TEAM	Drawing Title	First floor lighting Plan			MODEL OF	PAGE 30
APPROVED BY	UNHCR						





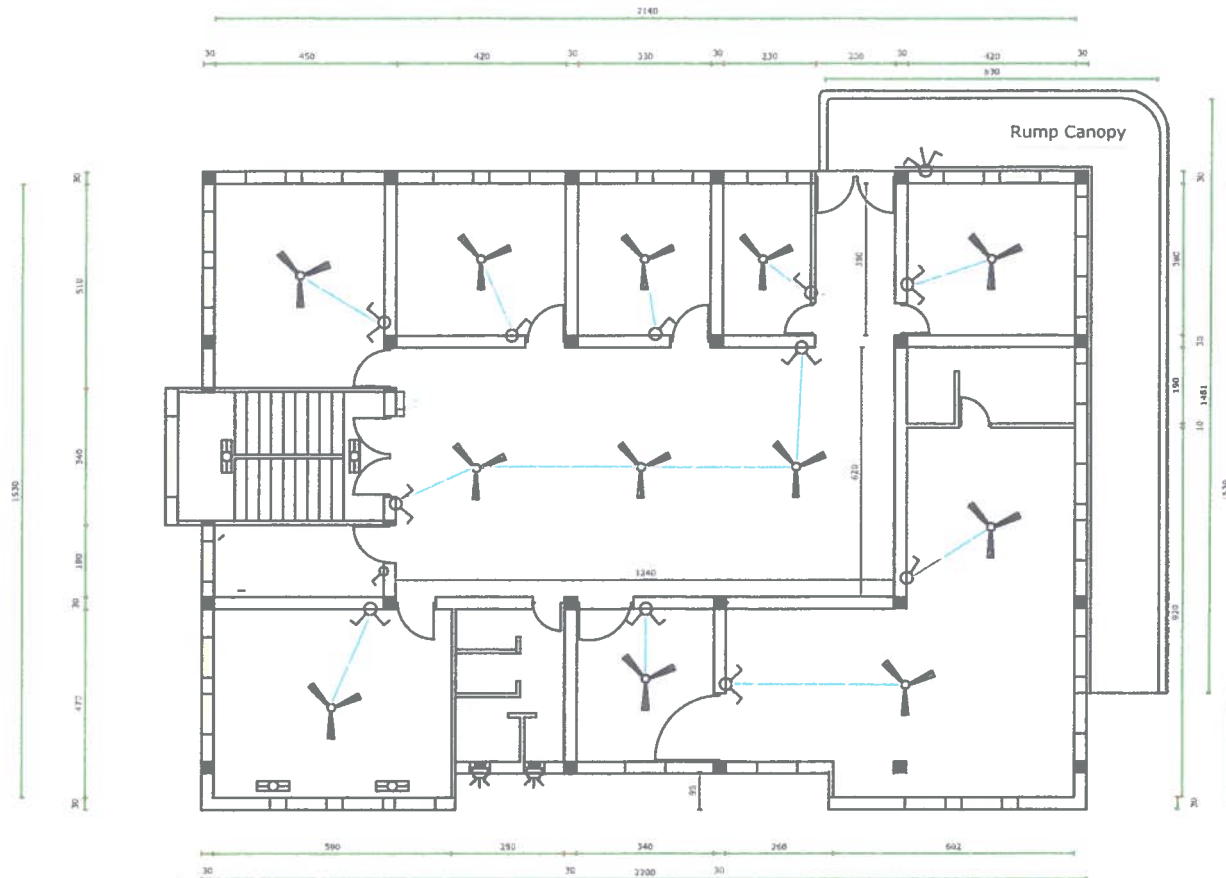
FIRST FLOOR COOLING PLAN



United Nation High
Commissioner
for Refugees
People Action For
Change organization
PACO



SURVEYED BY	PACO SURVEY TEAM	Sub- project Name	Construction of two story building maternity ward in the existing CHC of Dasht-e-Archi district PARR	DESIGNED SUBMITTAL		SCALE
DESIGN BY	PACO DESIGN TEAM	Section Name	Lighting	SUBMITTAL DESCRIPTION	Electrical	1:100
DRAWING BY	PACO DESIGN TEAM	Project Code		DATE	19-DEC-20123	PAPER SIZE A-3
CHECKED BY	PACO DESIGN TEAM	Drawing Title	First floor lighting Plan			SHEET REFERENCE NO
APPROVED BY	UNHCR					MODEL OF PAGE 32



SECOND FLOOR COOLING PLAN



United Nation High
Commissioner
for Refugees
People Action For
Change organization
PACO



SURVEYED BY	PACO SURVEY TEAM
DESIGN BY	PACO DESIGN TEAM
DRAWING BY	PACO DESIGN TEAM
CHECKED BY	PACO DESIGN TEAM
APPROVED BY	UNHCR

Sub- project Name	Construction of two story building maternity ward in the existing CHC of Dasht-e-Archi district PARR
Section Name	Lighting
Project Code	
Drawing Title	Second floor lighting Plan

DESIGNED SUBMITTAL	
SUBMITTAL DESCRIPTION	Electrical
DATE	19-DEC-20123

SCALE	1:100
PAPER SIZE	A-3
SHEET REFERENCE NO	MODEL OF PAGE 33

NOTES.

1. Height of socket 450 mm & switch 1300 mm from floor.
2. All electrical cable P.V.C conduit are underground 100mm.
3. Electrical Panel level is 1800 mm the highest.
4. The ground Resistance shall not exceed 25 OHMS Per NEC 250.56.
5. All receptacles in wet and damp location shall be water prove type.
6. All wire 1x2.5 mm² & 1x4mm² in the PVC conduit are under the plaster.
7. PVC conduit exposed in 50 degrees ambient temperature shall schedule 80.
8. All connection (from one bulb to other) have Plastic joint caliper.
9. Ceiling PVC joint box should install for all bulbs which drawing.
10. Use three colors wire Brown for phase, Blue for neutral and Green Yellow stripe for ground.

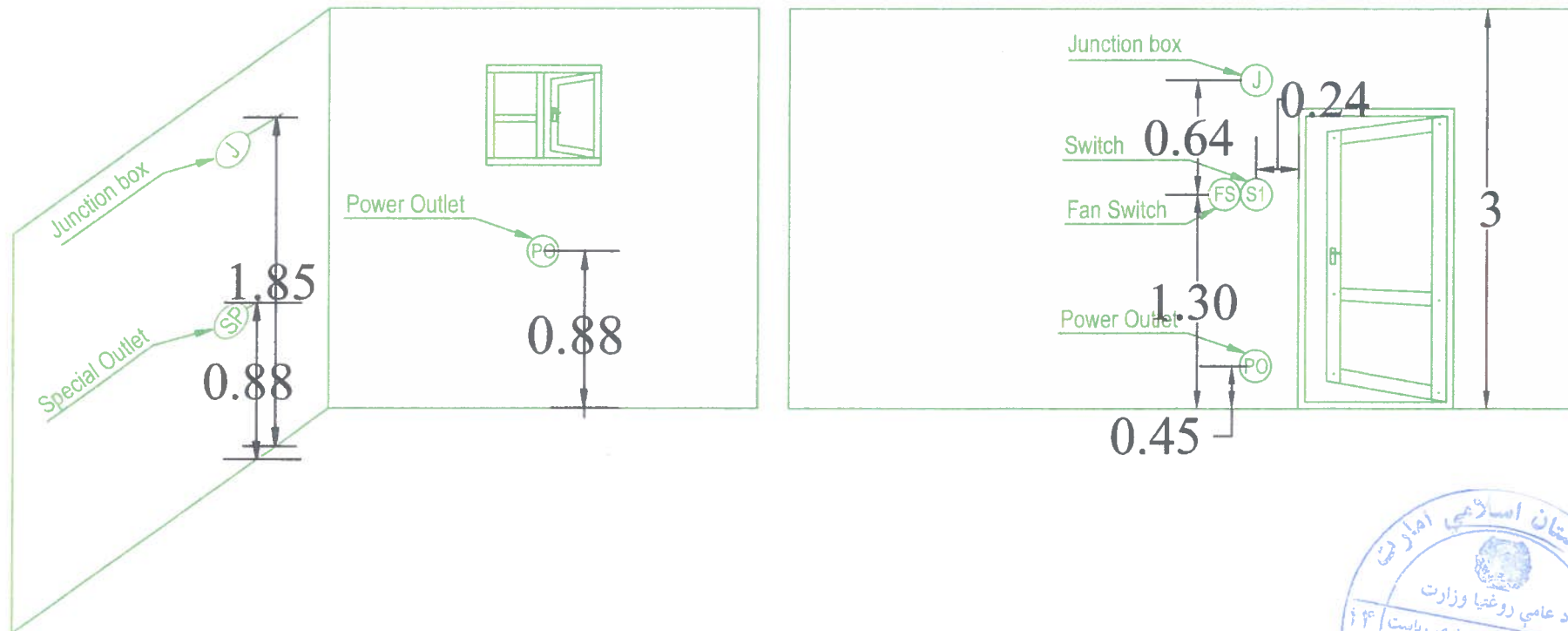


United Nation High
Commissioner
for Refugees
People Action For
Change organization
PACO



SURVEYED BY	PACO SURVEY TEAM	Sub- project Name	Construction of two story building maternity ward in the existing CHC of Dasht-e-Archi district PARR	DESIGNED SUBMITTAL		SCALE 1:100
DESIGN BY	PACO DESIGN TEAM	Section Name	Electrical General Notes	SUBMITTAL DESCRIPTION	Electrical	PAPER SIZE A-3
DRAWING BY	PACO DESIGN TEAM	Project Code		DATE	19-DEC-20123	SHEET REFERENCE NO MODEL OF PAGE 34
CHECKED BY	PACO DESIGN TEAM	Drawing Title	Electrical			
APPROVED BY	UNHCR					

OUTLET INSTALLATION DETAIL



United Nation High
Commissioner
for Refugees

People Action For
Change organization
PACO



SURVEYED BY	PACO SURVEY TEAM
DESIGN BY	PACO DESIGN TEAM
DRAWING BY	PACO DESIGN TEAM
CHECKED BY	PACO DESIGN TEAM
APPROVED BY	UNHCR

Sub- project Name	Construction of two story building maternity ward in the existing CHC of Dasht-e-Archi district PARR
Section Name	Electrical Diagram
Project Code	
Drawing Title	Electrical out let installation





















DESIGNED SUBMITTAL	
SUBMITTAL DESCRIPTION	Electrical
DATE	19-DEC-20123

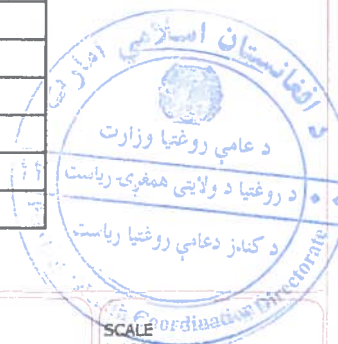
SCALE 1:100

PAPER SIZE A-3

SHEET REFERENCE NO
MODEL OF PAGE 35

LEGENDS AND DETAILS TABLE

SIGNS	DESCRIPTION	UNIT	PIECES
	PANEL BOARD WITH 1X50 AMP MAIN CB 2X16 AMP CB+RCBO 10X20A CB+RCBO	NO	2
	Fuse Box 30cmX30cm	NO	2
	PVC CONDUIT 1 INCH	M	200
	PVC CONDUIT 3 INCH	M	35
	MAIN DISTRIBUTION PANEL COMPLETE WITH 100 AMP MAIN CB AND 2X40, 1X50 AMP(CB) AUTOMATION FUSE.	NO	2
	PVC JOINT BOX	NO	63
	Exhaust Fan	NO	4
	ELECTRICAL COPPER WIRE 1X2.5mm ² FOR LIGHTING	M	1150
	ELECTRICAL COPPER WIRE 1X4mm ² FOR SOCKETS	M	250
	ELECTRICAL COPPER WIRE 1(3X16mm ²) FROM MAIN PANEL TO DISTRIBUTION PANEL	M	120
	ELECTRICAL COPPER WIRE 1X25mm ² FOR GROUNDING	M	45
	ELECTRICAL COPPER WIRE 1(2X25mm ²) FOR MAIN LINE	M	50
	PVC CONDUIT 2 INCH FOR 1(3X16) MM CABLE	M	15
	TWO POLE SWITCH UNDER PLASTER 10 AMP, 1PH	NO	15
	One Way Switch 10 A	NO	38
	Ordinary receptacles 16A/220V	NO	78
	Two Way Switch 10 A	NO	22
	FLUORESCENT LIGHT FIXTURE 2X36W, 50Hz, 220V	NO	71
	FLUORESCENT LIGHT FIXTURE 1X40W, 50Hz, 220V	NO	14
	GROUNDING ROD 3M LENGTH, Ø20MM	NO	4



United Nation High
Commissioner
for Refugees

People Action For
Change organization
PACO



SURVEYED BY	PACO SURVEY TEAM
DESIGN BY	PACO DESIGN TEAM
DRAWING BY	PACO DESIGN TEAM
CHECKED BY	PACO DESIGN TEAM
APPROVED BY	UNHCR

Sub- project Name	Construction of two story building maternity ward in the existing CHC of Dasht-e-Archi district PARR
Section Name	Electrical Legend
Project Code	
Drawing Title	Electrical

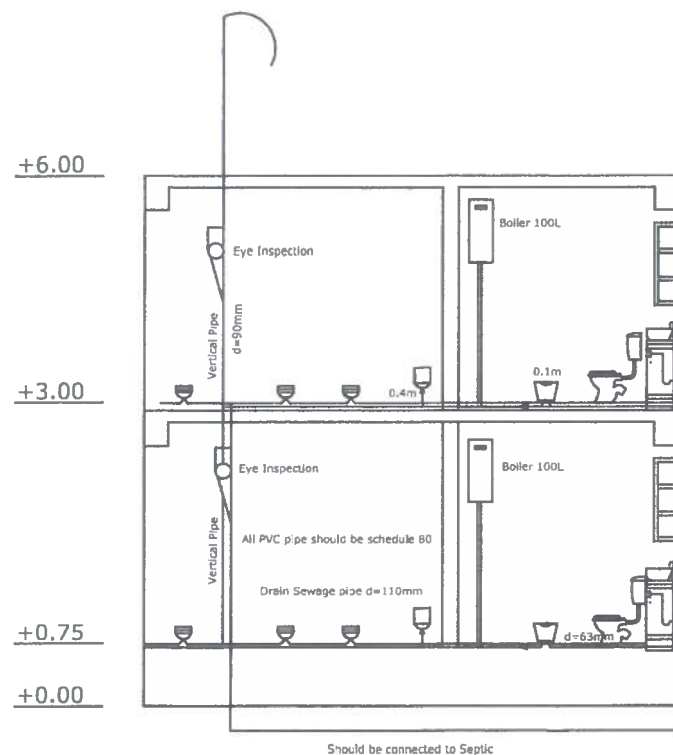
DESIGNED SUBMITTAL	
SUBMITTAL DESCRIPTION	Electrical
DATE	19-DEC-20123

SCALE
1:100

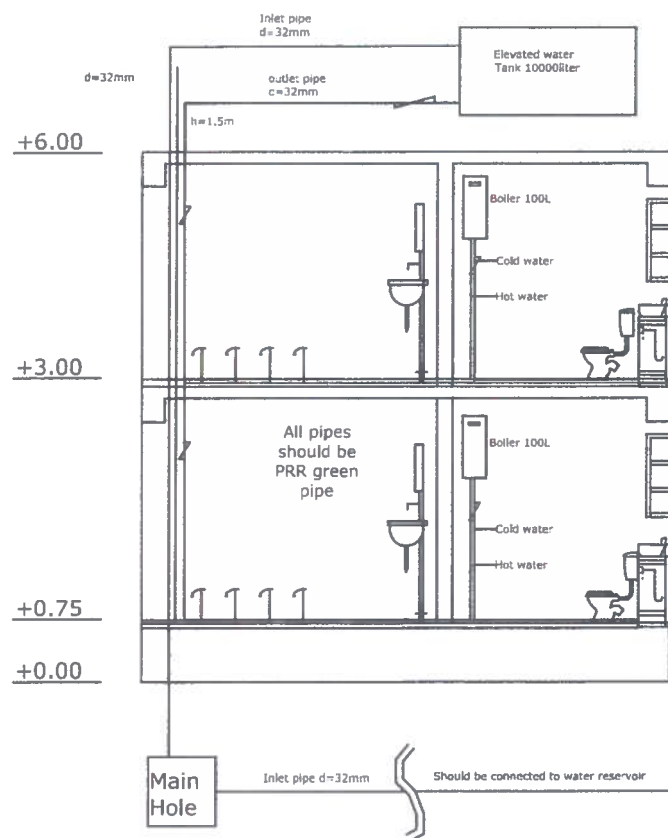
PAPER SIZE A-3

SHEET REFERENCE NO
MODEL OF PAGE 36

CANALIZATION DIAGRAM



WATER SUPPLY DIAGRAM



LEGEND	
	WC SINK
	TAB
	Eastern water closet
	Floor drain
	WC sink
	Bras valve
	Reduce
	Wash Basin
	Elbow
	WC Section



United Nation High
Commissioner
for Refugees

People Action For
Change organization
PACO



SURVEYED BY	PACO SURVEY TEAM
DESIGN BY	PACO DESIGN TEAM
DRAWING BY	PACO DESIGN TEAM
CHECKED BY	PACO DESIGN TEAM
APPROVED BY	UNHCR

Sub- project Name	Construction of two story building maternity ward in the existing CHC of Dasht-e-Archi district PARR
Section Name	Water supply and canalization Diagram
Project Code	
Drawing Title	Plumbing Diagram

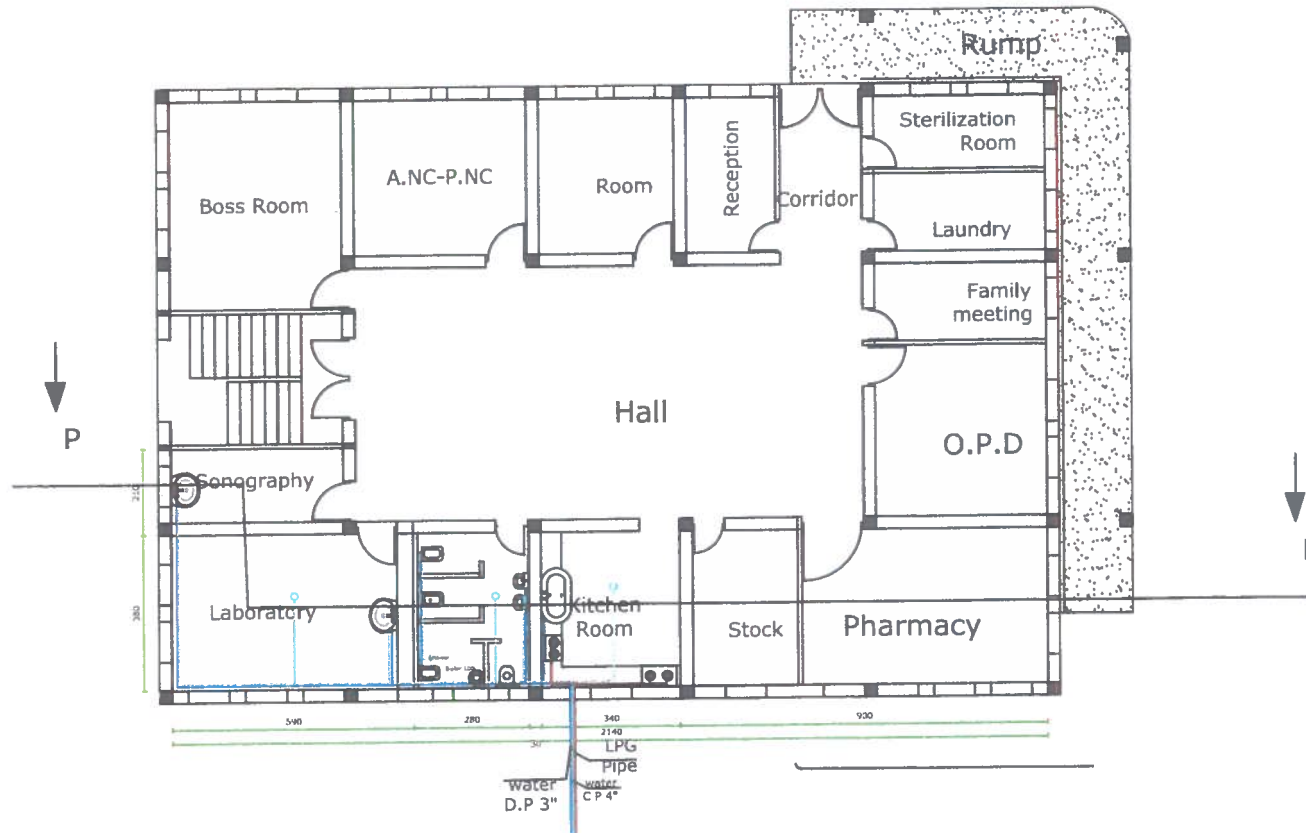
DESIGNED SUBMITTAL	
SUBMITTAL DESCRIPTION	Plumbing
DATE	19-DEC-20123

SCALE 1:100

PAPER SIZE A-3

SHEET REFERENCE NO
MODEL OF PAGE 37





LEGEND	
	WC SINK
	Hand Wash
	Eastern water closet
	Dish wash sink
	Sewerage pipe
	Water pipe
	LPG pipe
	Water Boiler
	Toilet

FIRST FLOOR PLUMBING PLAN



United Nation High
Commissioner
for Refugees
People Action For
Change organization
PACO

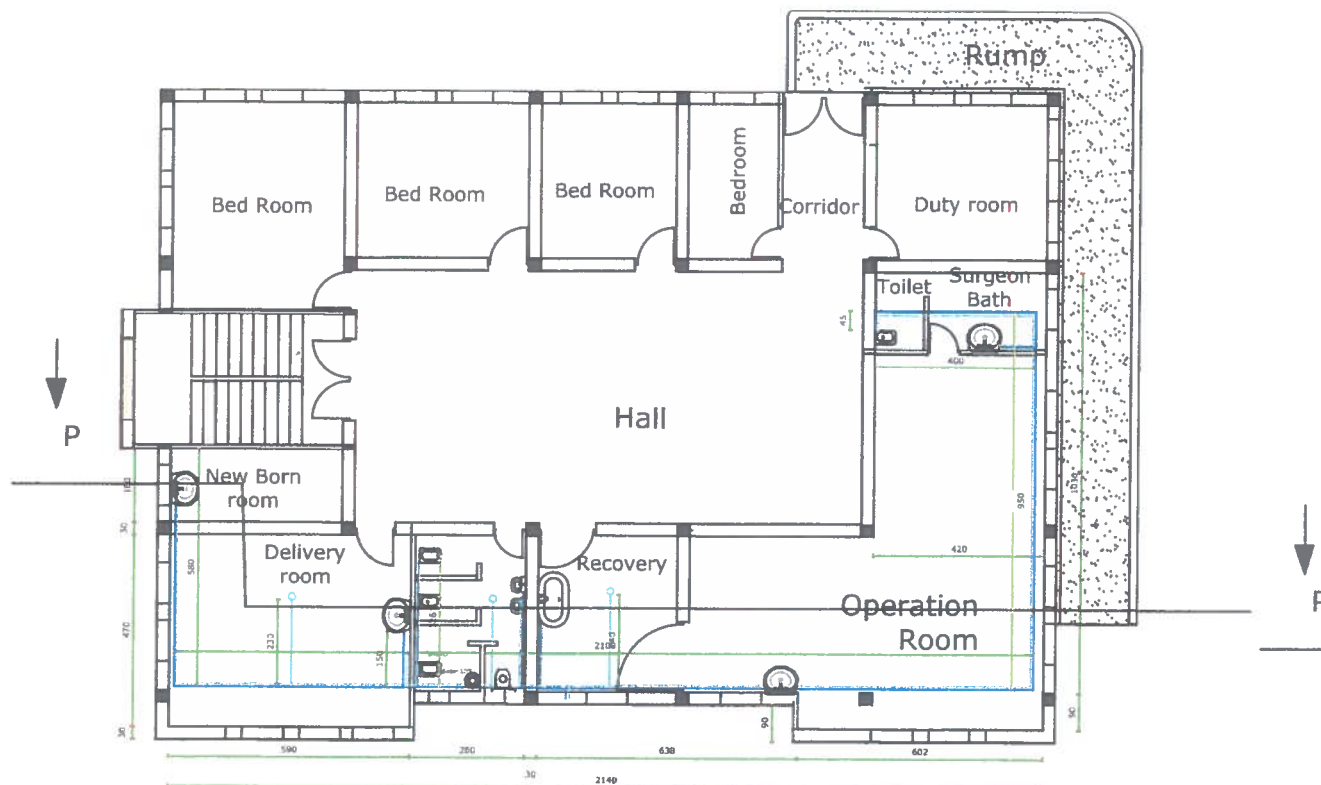


SURVEYED BY	PACO SURVEY TEAM
DESIGN BY	PACO DESIGN TEAM
DRAWING BY	PACO DESIGN TEAM
CHECKED BY	PACO DESIGN TEAM
APPROVED BY	UNHCR

Sub- project Name	Construction of two story building maternity ward in the existing CHC of Dasht-e-Archi district PARR
Section Name	Water supply and canalization
Project Code	
Drawing Title	First floor plumbing Plan

DESIGNED SUBMITTAL	
SUBMITTAL DESCRIPTION	Plumbing
DATE	19-DEC-20123

SCALE	1:100
PAPER SIZE	A-3
SHEET REFERENCE NO	MODEL OF PAGE 38



LEGEND	
	WC SINK
	Hand Wash
	Eastern water closet
	Dish wash sink
	Sewerage pipe
	Water pipe
	Water Boiler
	Toilet

SECON FLOOR PLUMBING PLAN

SURVEYED BY	PACO SURVEY TEAM
DESIGN BY	PACO DESIGN TEAM
DRAWING BY	PACO DESIGN TEAM
CHECKED BY	PACO DESIGN TEAM
APPROVED BY	UNHCR

Sub- project Name	Construction of two story building maternity ward in the existing CHC of Dasht-e-Archi district PARR
Section Name	Water supply and canalization
Project Code	
Drawing Title	Second floor Plumbing Plan

DESIGNED SUBMITTAL	
SUBMITTAL DESCRIPTION	Plumbing
DATE	19-DEC-20123

SCALE
1:100
PAPER SIZE A-3
SHEET REFERENCE NO
MODEL OF PAGE 39



United Nation High
Commissioner
for Refugees
People Action For
Change organization
PACO





LEGEND	
	WC SINK
	Hand Wash
	Western water closet
	Dish wash sink
	Sewerage pipe
	Water pipe
	LPG pipe
	Water Boiler
	Kitchen Oven

FIRST & SECOND FLOOR PLUMBING SECTION P-P



United Nation High
Commissioner
for Refugees
People Action For
Change organization
PACO



SURVEYED BY	PACO SURVEY TEAM
DESIGN BY	PACO DESIGN TEAM
DRAWING BY	PACO DESIGN TEAM
CHECKED BY	PACO DESIGN TEAM
APPROVED BY	UNHCR

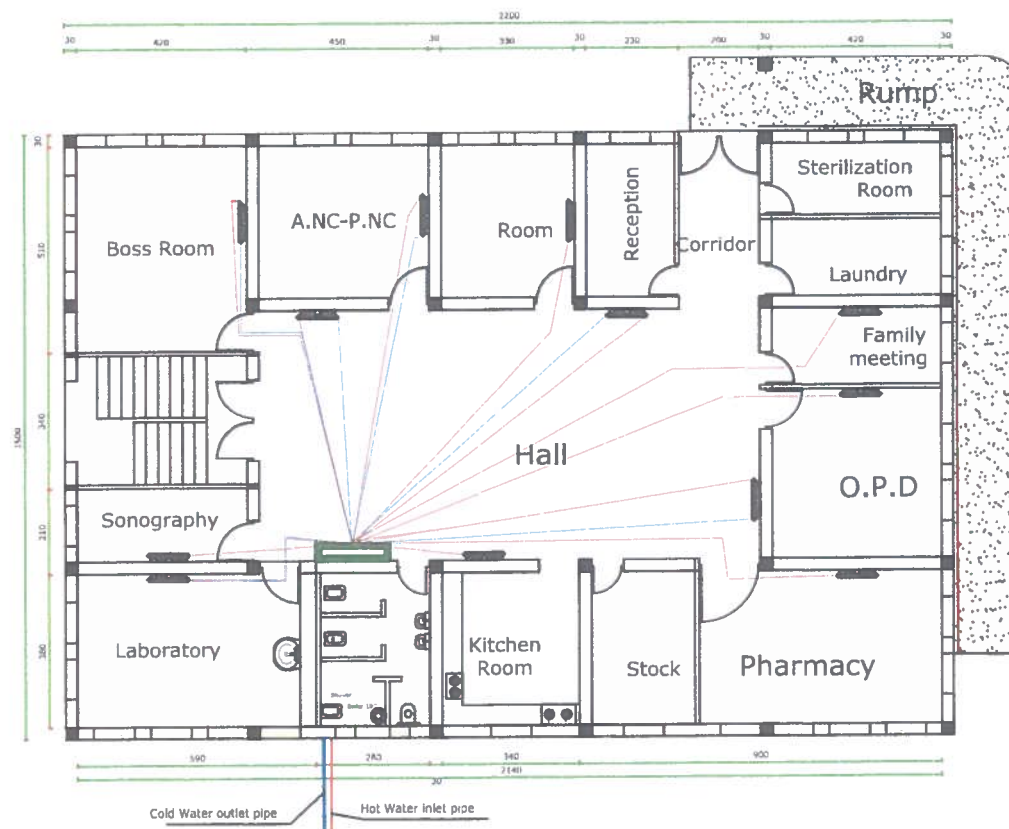
Sub- project Name	Construction of two story building maternity ward in the existing CHC of Dasht-e-Archl district PARR
Section Name	Water supply and canalization
Project Code	
Drawing Title	Cross section of plumbing

DESIGNED SUBMITTAL	
SUBMITTAL DESCRIPTION	Plumbing
DATE	19-DEC-20123

SCALE 1:100

PAPER SIZE A-3

SHEET REFERENCE NO
MODEL OF PAGE 40



FIRST FLOOR CENTRAL HEATING UNIT(CHU) PLAN



United Nation High
Commissioner
for Refugees
People Action For
Change organization
PACO

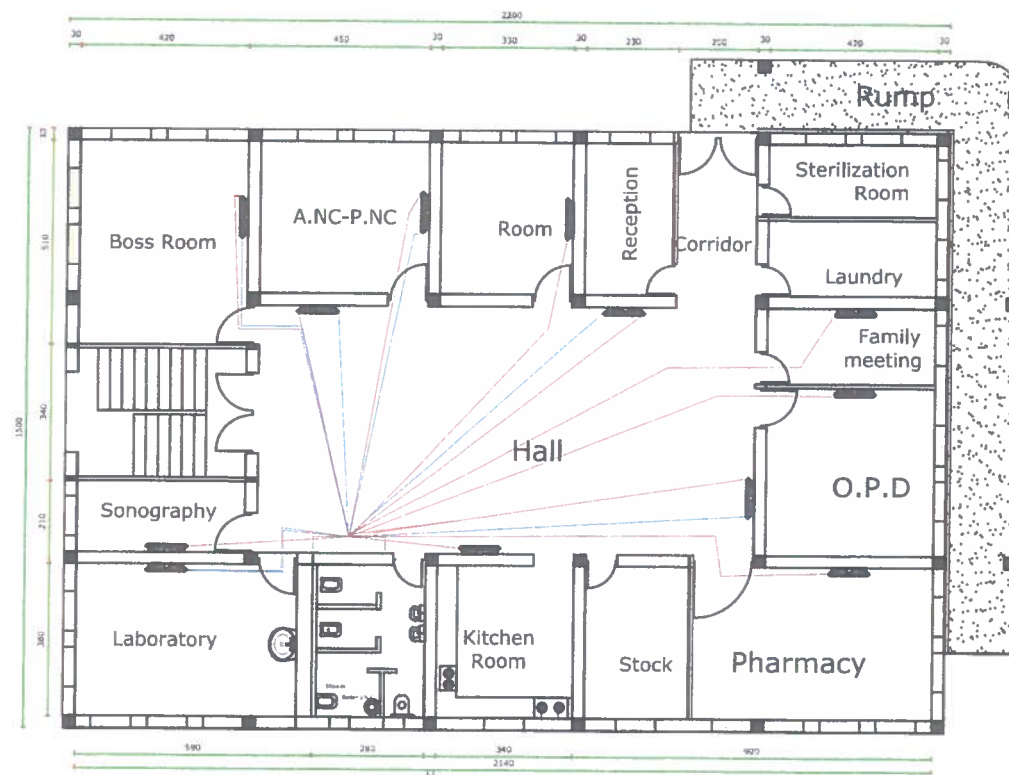


SURVEYED BY	PACO SURVEY TEAM
DESIGN BY	PACO DESIGN TEAM
DRAWING BY	PACO DESIGN TEAM
CHECKED BY	PACO DESIGN TEAM
APPROVED BY	UNHCR

Sub- project Name	Construction of two story building maternity ward in the existing CHC of Dasht-e-Archi district PARR
Section Name	CHU (central heating unit)
Project Code	
Drawing Title	CHU plan

DESIGNED SUBMITTAL	
SUBMITTAL DESCRIPTION	Mechanical
DATE	19-DEC-20123

SCALE	1:100
PAPER SIZE	A-3
SHEET REFERENCE NO	MODEL OF PAGE 41



LEGEND	
	Radiator
	Penal Board
	Cold water Pipe
	Hot water Pipe

FIRST FLOOR CENTRAL HEATING UNIT(CHU) PLAN



United Nation High
Commissioner
for Refugees
People Action For
Change organization
PACO



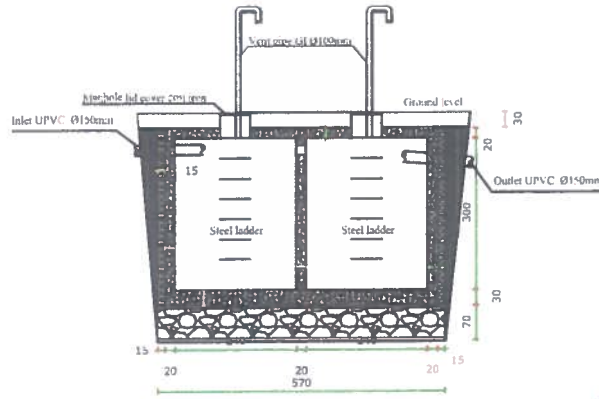
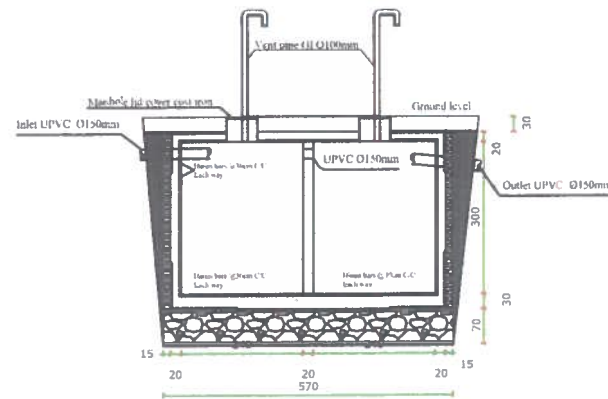
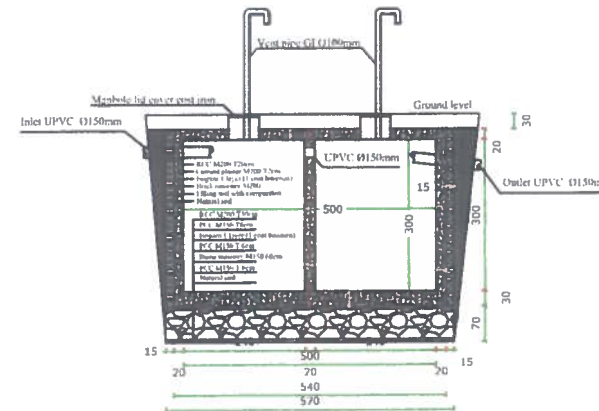
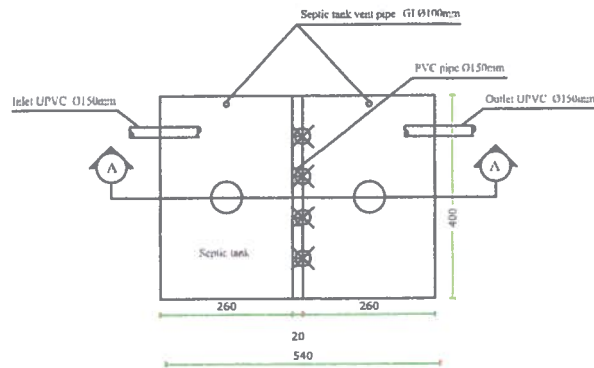
SURVEYED BY	PACO SURVEY TEAM
DESIGN BY	PACO DESIGN TEAM
DRAWING BY	PACO DESIGN TEAM
CHECKED BY	PACO DESIGN TEAM
APPROVED BY	UNHCR

Sub- project Name	Construction of two story building maternity ward in the existing CHC of Dasht-e-Archi district PARR
Section Name	CHU (central heating unit)
Project Code	
Drawing Title	CHU plan

DESIGNED SUBMITTAL	
SUBMITTAL DESCRIPTION	Mechanical
DATE	19-DEC-20123

SCALE	1:100
PAPER SIZE	A-3
SHEET REFERENCE NO	MODEL OF PAGE 42

SEPTIC TANK



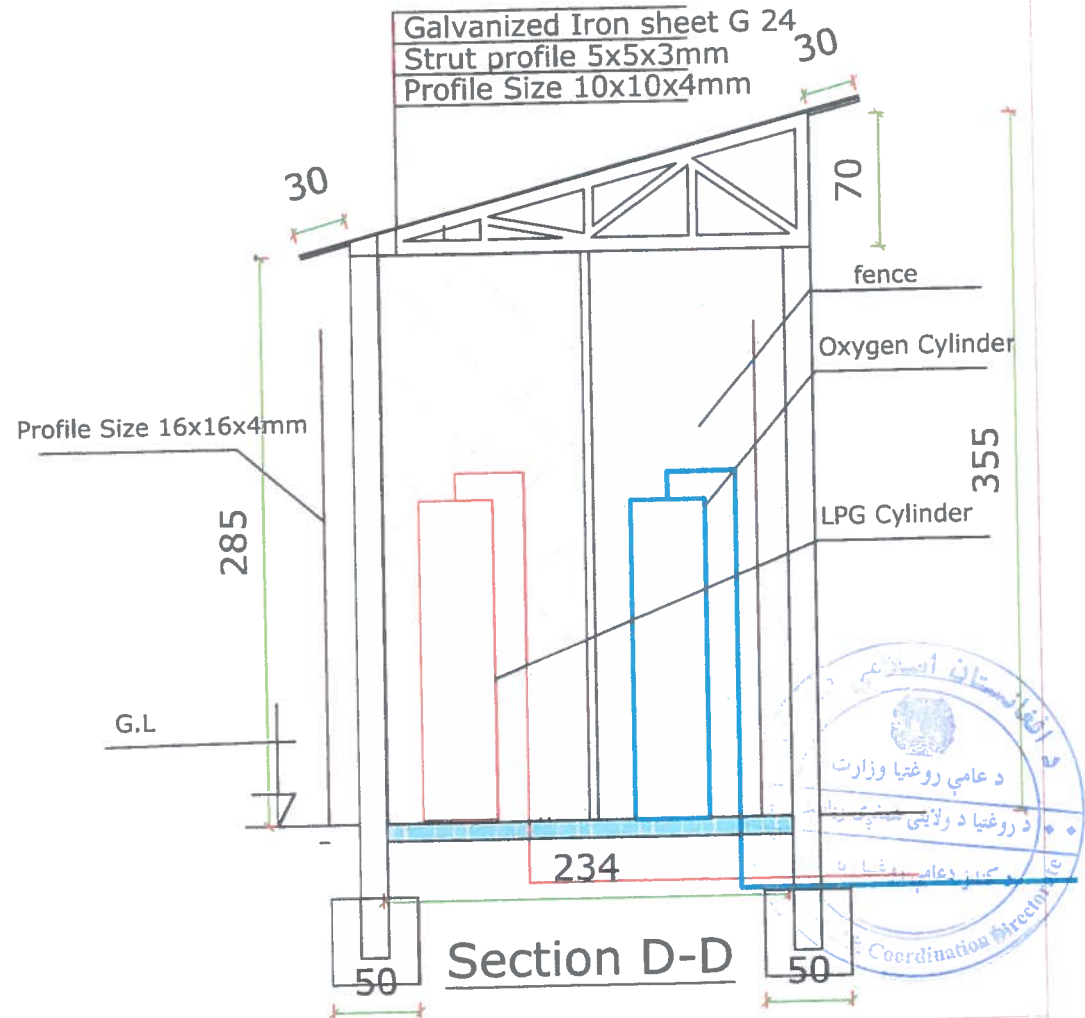
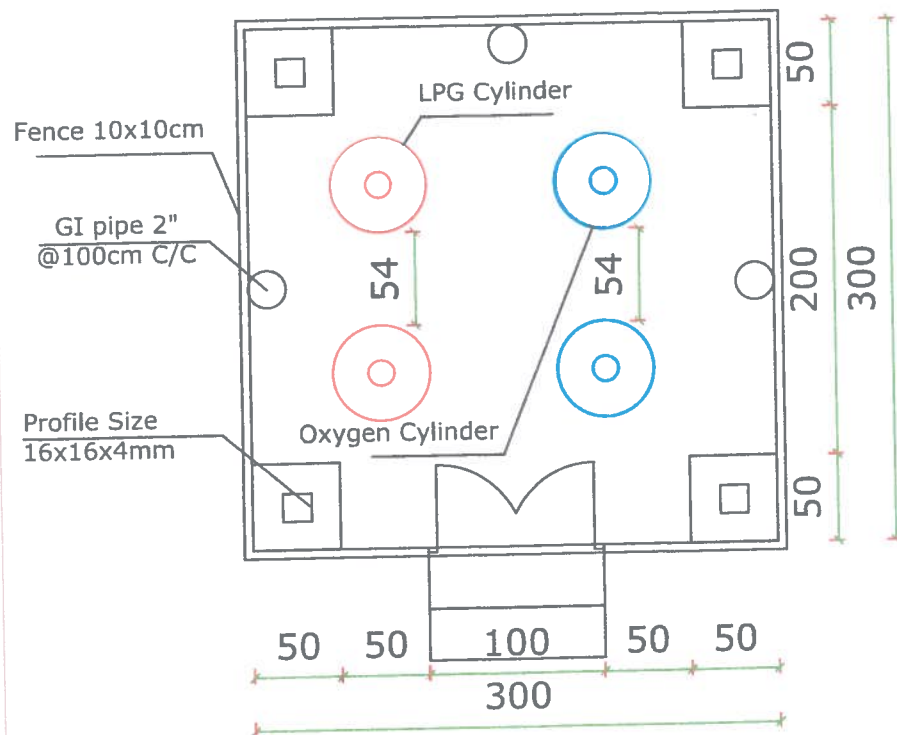
United Nation High
Commissioner
for Refugees
People Action For
Change organization
PACO



SURVEYED BY	PACO SURVEY TEAM	Sub- project Name	Construction of two story building maternity ward in the existing CHC of Dasht-e-Archi district PARR	DESIGNED SUBMITTAL	140
DESIGN BY	PACO DESIGN TEAM	Section Name	Canalization	SUBMITTAL DESCRIPTION	Structure
DRAWING BY	PACO DESIGN TEAM	Project Code		DATE	19-DEC-20123
CHECKED BY	PACO DESIGN TEAM	Drawing Title	Septic Tank plan and section		
APPROVED BY	UNHCR				



Plan of LPG and oxygen canopy



United Nation High
Commissioner
for Refugees
People Action For
Change organization
PACO



SURVEYED BY	PACO SURVEY TEAM
DESIGN BY	PACO DESIGN TEAM
DRAWING BY	PACO DESIGN TEAM
CHECKED BY	PACO DESIGN TEAM
APPROVED BY	UNHCR

Sub- project Name	Construction of two story building maternity ward in the existing CHC of Dasht-e-Archi district PARR
Section Name	Plan, section
Project Code	
Drawing Title	LPG and Oxygen Canopy

DESIGNED SUBMITTAL	
SUBMITTAL DESCRIPTION	Architecture
DATE	19-DEC-20123

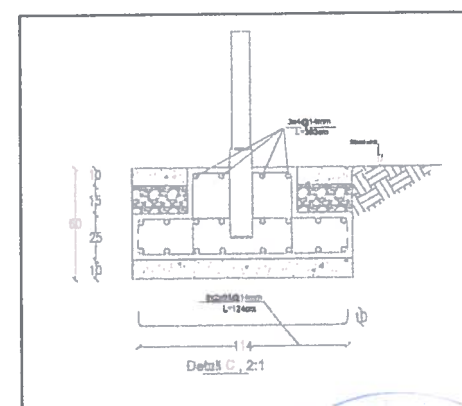
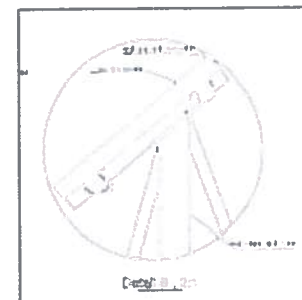
SCALE 1:100
PAPER SIZE A-3
SHEET REFERENCE NO MODEL OF PAGE 41

360

1120

11	10	9	8	7	6	5	4	3	2	1
11	10	9	8	7	6	5	4	3	2	1

Solar Panels Plan



United Nation High
Commissioner
for Refugees

People Action For
Change organization
PACO



SURVEYED BY	PACO SURVEY TEAM
DESIGN BY	PACO DESIGN TEAM
DRAWING BY	PACO DESIGN TEAM
CHECKED BY	PACO DESIGN TEAM
APPROVED BY	UNHCR

Sub- project Name	Construction of two story building maternity ward in the existing CHC of Dahle-e-Archi district PARR
Section Name	Solar System
Project Code	
Drawing Title	Solar frame, stand and foundation

DESIGNED SUBMITTAL	
SUBMITTAL DESCRIPTION	Architecture
DATE	19-DEC-20123

SCALE	1:100
PAPER SIZE A-3	
SHEET REFERENCE NO	MODEL OF PAGE 47

