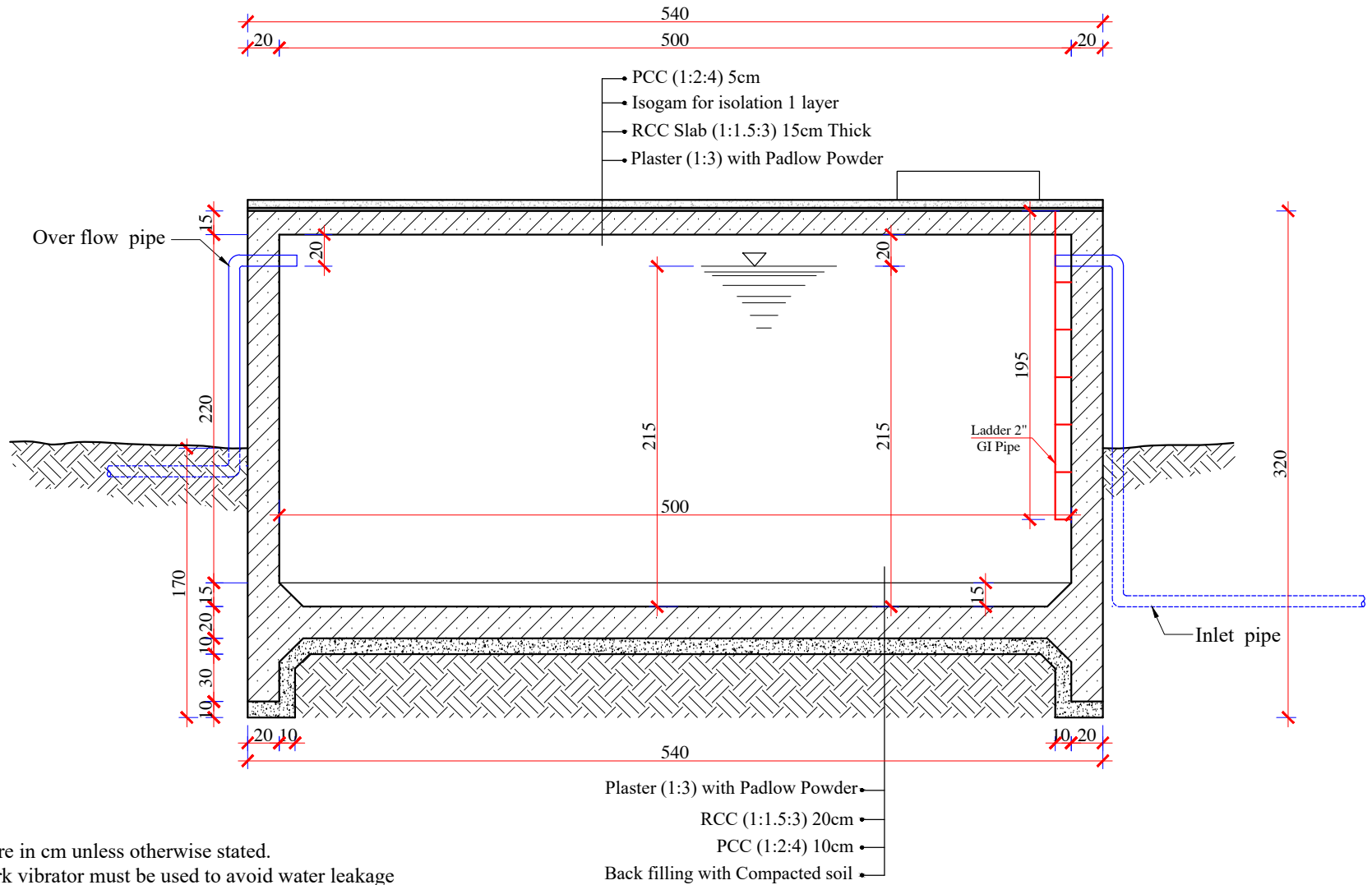


**Note:**

- 1- All dimensions are in cm unless otherwise stated.
- 2- During RCC work vibrator must be used to avoid water leakage from reservoir.
- 3- All PCC works should be with 1:2:4 mortar unless otherwise stated.
- 4- All RCC works should be with 1:1.5:3 mortar.
- 5- Isolation material is glass wool.
- 7- Curing must be continued upto 28 days.
- 8- Clear and Clean water must be used every where.
- 9- The inlet, outlet, overflow and washing pipes should be adjusted according to site condition.

<b>MEDAIR</b> WASH <b>MEDAIR</b>	SURVEYED BY	MEDAIR Engineering Dep	CHECKED BY	Eng Obaidullah Muneeb	SCALE	1:xx	<div style="border: 1px solid black; padding: 2px; text-align: center;">1/7</div>	PROVINCE	Urozgan	PROJECT NAME	30 Cubic meter RCC Water Reservoir-1
	DESIGNED BY	MEDAIR Engineering Dep	REVIEWED BY	Conner Wingerter	DATE	2023/11/23		DISTRICT	Dehrawud	DRAWING TITLE	Surface Reservoir Plan
	DRAWN BY	MEDAIR Engineering Dep	APPROVED BY	Conner Wingerter	DRAWING NO.			VILLAGE	Anarjoy		

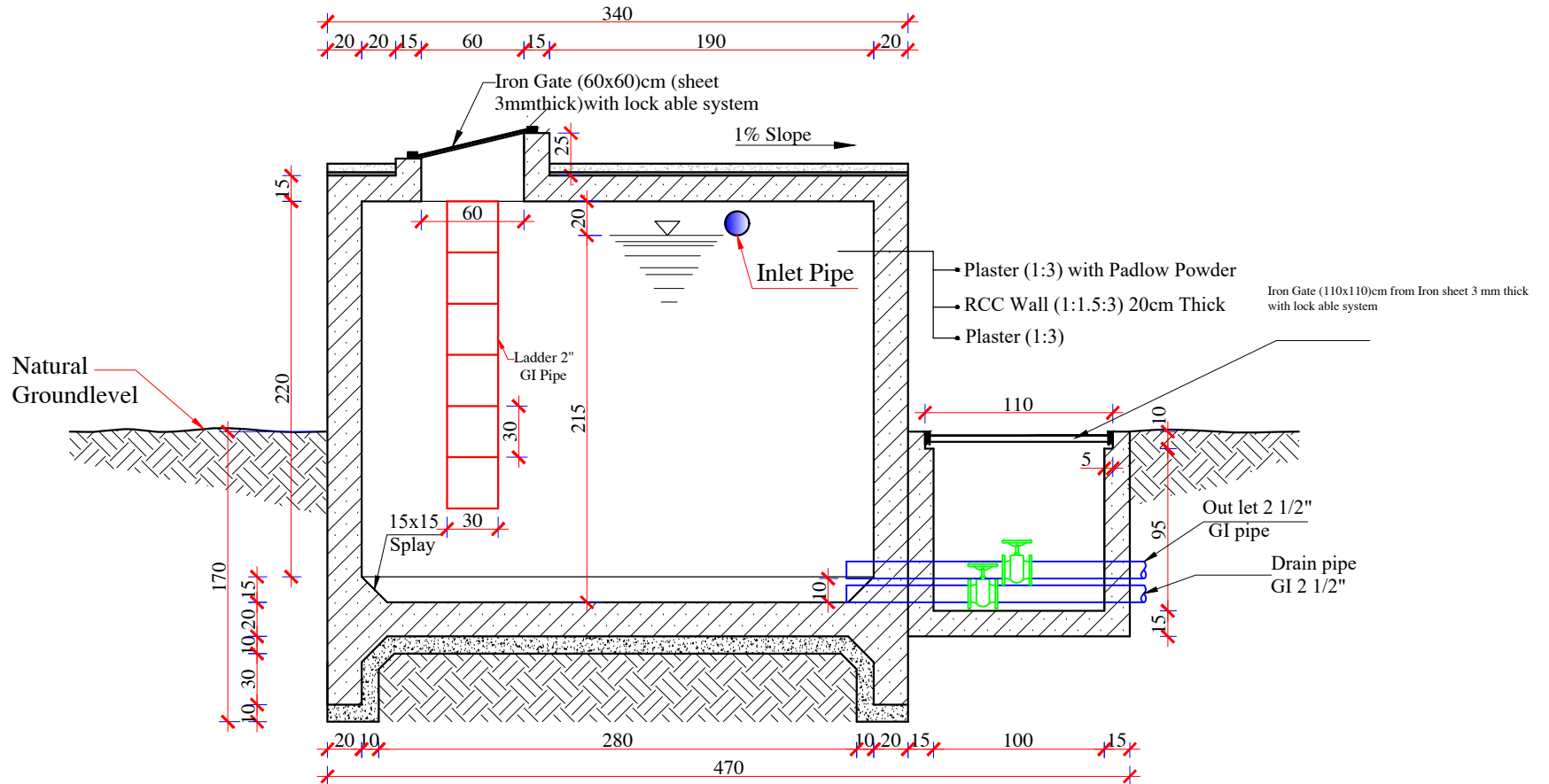


#### Note:

- 1- All dimensions are in cm unless otherwise stated.
- 2- During RCC work vibrator must be used to avoid water leakage from reservoir.
- 3- All PCC works should be with 1:2:4 mortar unless otherwise stated.
- 4- All RCC works should be with 1:1.5:3 mortar.
- 5- Isolation material is glass wool.
- 7- Curing must be continued upto 28 days.
- 8- Clear and Clean water must be used every where.
- 9- The inlet, outlet, overflow and washing pipes should be adjusted according to site condition.

## SECTION A-A

<b>MEDAIR</b> WASH <b>MEDAIR</b>	SURVEYED BY	MEDAIR Engineering Dep	CHECKED BY	Eng Obaidullah Muneeb	SCALE	1:xx	SHEET NO. 2/7	PROVINCE	Urozgan	PROJECT NAME	30 Cubic meter RCC Water Reservoir-1
	DESIGNED BY	MEDAIR Engineering Dep	REVIEWED BY	Conner Wingerter	DATE	2023/11/23		DISTRICT	Dehrawud	WASH Project	
	DRAWN BY	MEDAIR Engineering Dep	APPROVED BY	Conner Wingerter	DRAWING NO.			VILLAGE	Anarjoy	DRAWING TITLE	Surface Reservoir Section A-A

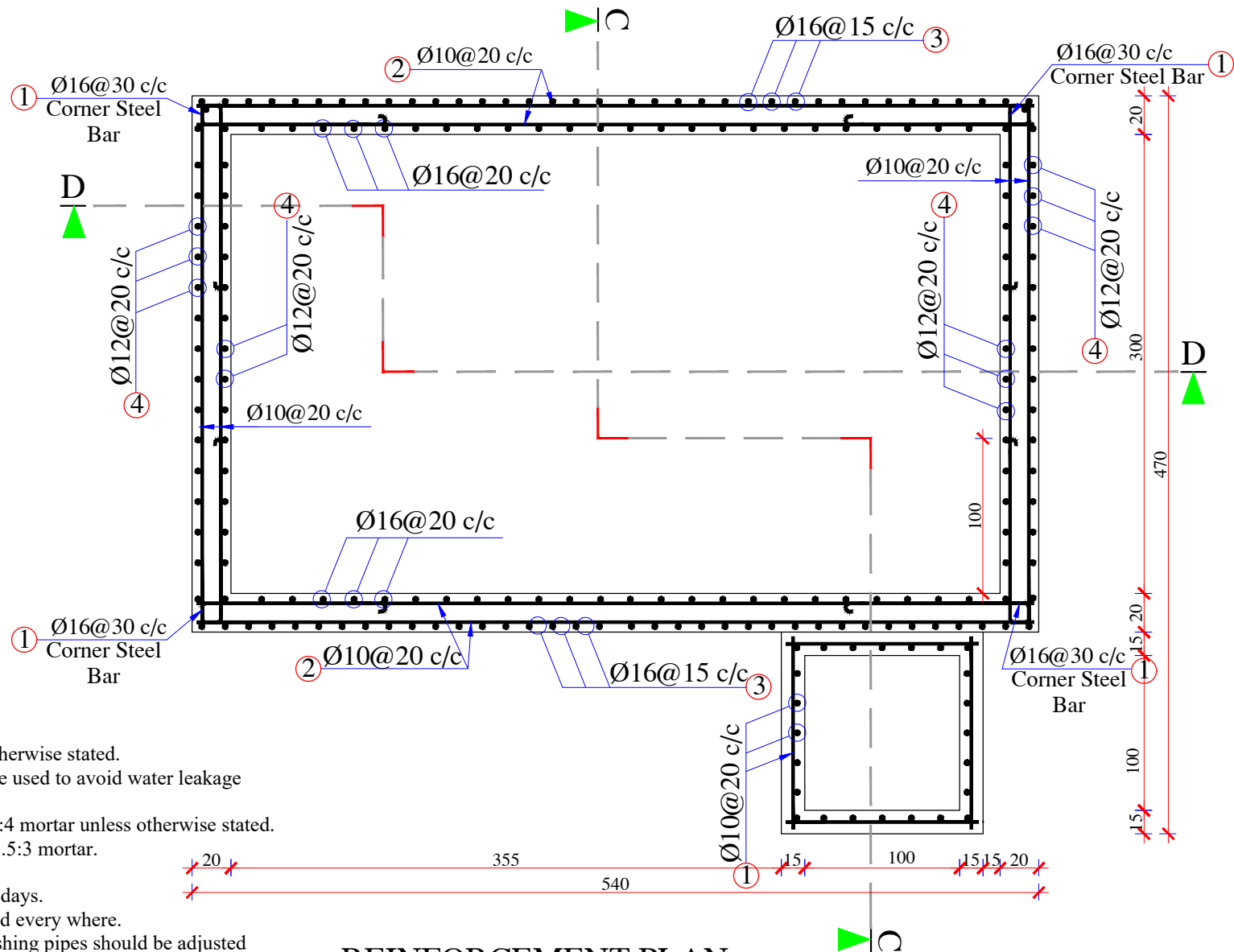


#### Note:

- 1- All dimensions are in cm unless otherwise stated.
- 2- During RCC work vibrator must be used to avoid water leakage from reservoir.
- 3- All PCC works should be with 1:2:4 mortar unless otherwise stated.
- 4- All RCC works should be with 1:1.5:3 mortar.
- 5- Isolation material is glass wool.
- 7- Curing must be continued upto 28 days.
- 8- Clear and Clean water must be used every where.
- 9- The inlet, outlet, overflow and washing pipes should be adjusted according to site condition.

## SECTION B-B

<b>MEDAIR</b> WASH <b>MEDAIR</b>	SURVEYED BY	MEDAIR Engineering Dep	CHECKED BY	Eng Obaidullah Muneeb	SCALE	1:xx	SHEET NO. 3/7	PROVINCE	Urozgan	PROJECT NAME	30 Cubic meter RCC Water Reservoir-1
	DESIGNED BY	MEDAIR Engineering Dep	REVIEWED BY	Conner Wingerter	DATE	2023/11/23		DISTRICT	Dehrawud	DRAWING TITLE	Surface Reservoir Section B-B
	DRAWN BY	MEDAIR Engineering Dep	APPROVED BY	Conner Wingerter	DRAWING NO.			VILLAGE	Anarjoy		

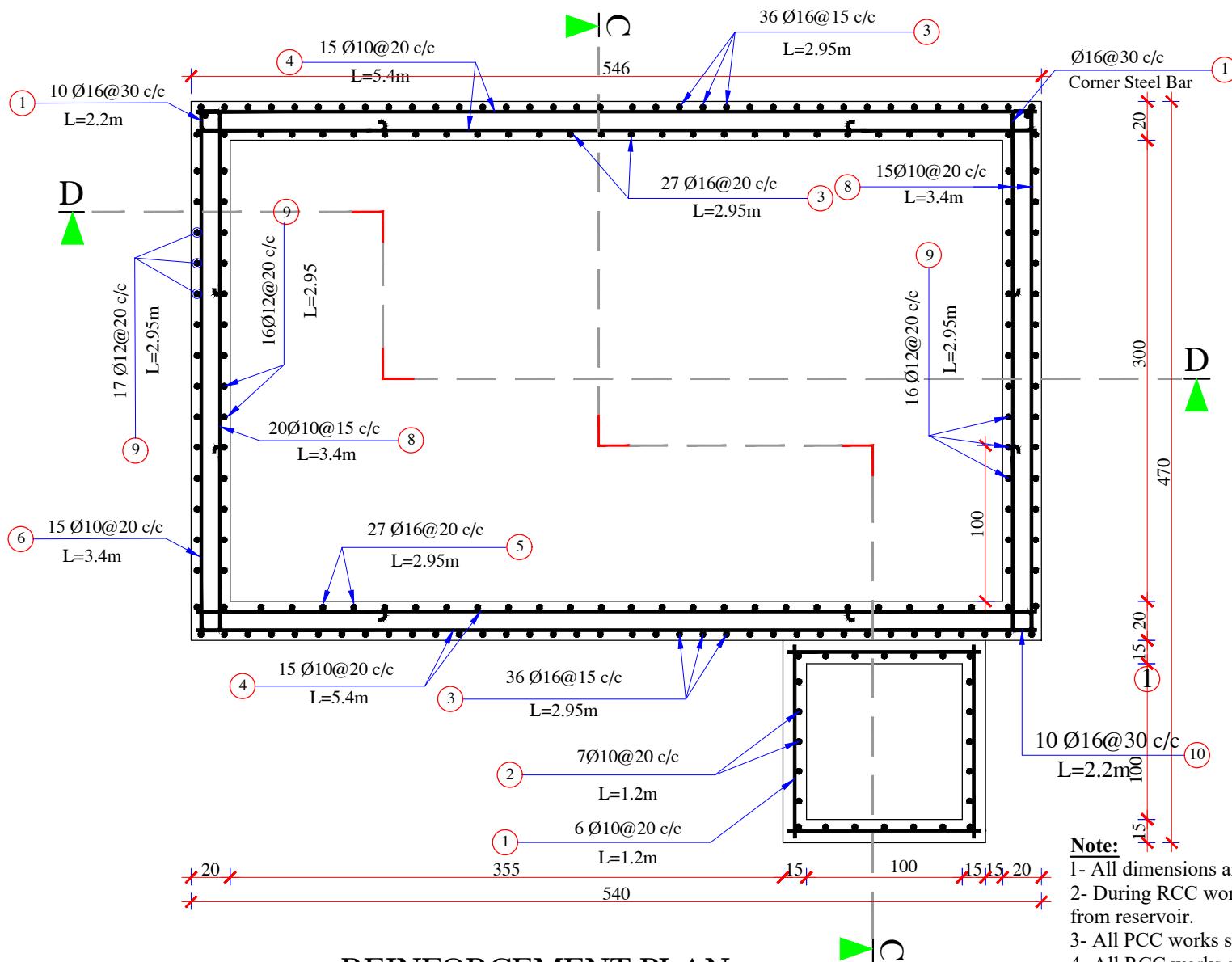


**REINFORCEMENT PLAN**

**Note:**

- 1- All dimensions are in cm unless otherwise stated.
- 2- During RCC work vibrator must be used to avoid water leakage from reservoir.
- 3- All PCC works should be with 1:2:4 mortar unless otherwise stated.
- 4- All RCC works should be with 1:1.5:3 mortar.
- 5- Isolation material is glass wool.
- 7- Curing must be continued upto 28 days.
- 8- Clear and Clean water must be used every where.
- 9- The inlet, outlet, overflow and washing pipes should be adjusted according to site condition.

<b>MEDAIR</b> WASH <b>MEDAIR</b>	SURVEYED BY	MEDAIR Engineering Dep	CHECKED BY	Eng Obaidullah Muneeb	SCALE	1:xx	SHEET NO. 4/7	PROVINCE	Urozgan	PROJECT NAME	30 Cubic meter RCC Water Reservoir-1
	DESIGNED BY	MEDAIR Engineering Dep	REVIEWED BY	Conner Wingerter	DATE	2023/11/23		DISTRICT	Dehrawud	DRAWING TITLE	Surface Reservoir Reinforcement plan
	DRAWN BY	MEDAIR Engineering Dep	APPROVED BY	Conner Wingerter	DRAWING NO.			VILLAGE	Anarjoy		

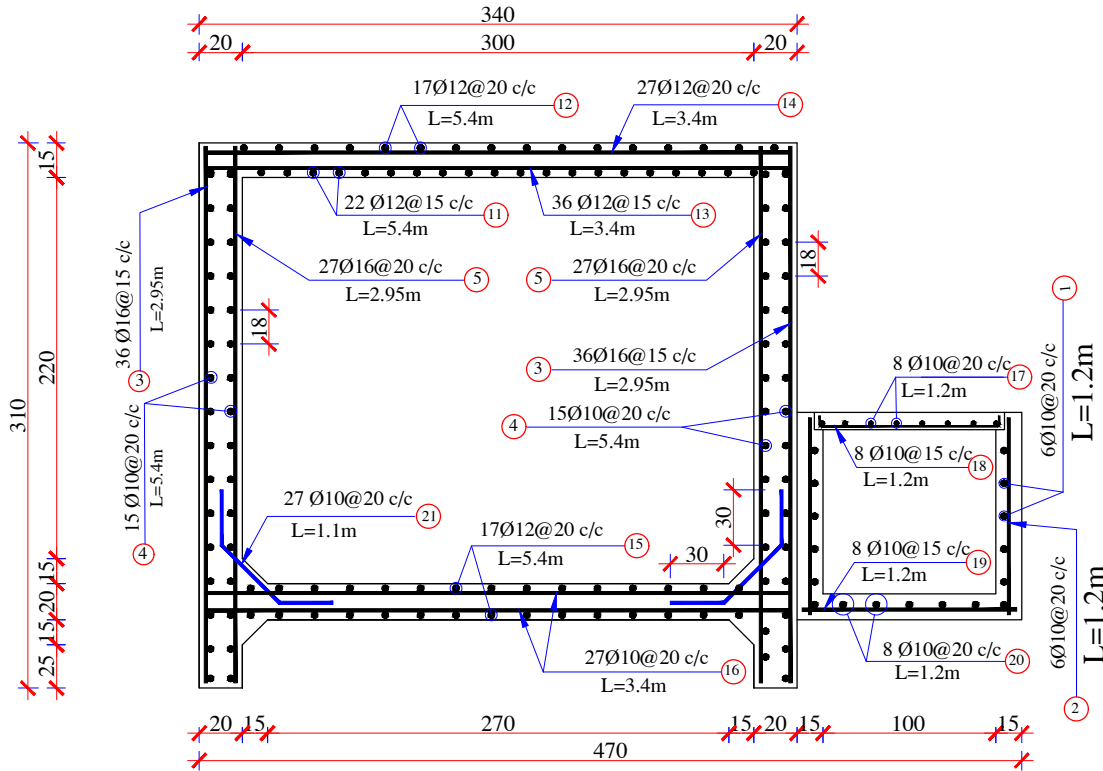


Corner Steel Bar Ø16 @30 c/c  
L=220cm

**Note:**

- 1- All dimensions are in cm unless otherwise stated.
- 2- During RCC work vibrator must be used to avoid water leakage from reservoir.
- 3- All PCC works should be with 1:2:4 mortar unless otherwise stated.
- 4- All RCC works should be with 1:1.5:3 mortar.
- 5- Isolation material is glass wool.
- 7- Curing must be continued upto 28 days.
- 8- Clear and Clean water must be used every where.
- 9- The inlet, outlet, overflow and washing pipes should be adjusted according to site condition.

<b>MEDAIR</b> WASH <b>MEDAIR</b>	SURVEYED BY	MEDAIR Engineering Dep	CHECKED BY	Eng Obaidullah Muneeb	SCALE	1:xx	SHEET NO. 5/7	PROVINCE	Urozgan	PROJECT NAME	30 Cubic meter RCC Water Reservoir-1
	DESIGNED BY	MEDAIR Engineering Dep	REVIEWED BY	Conner Wingerter	DATE	2023/11/23		DISTRICT	Dehrawud	DRAWING TITLE	Surface Reservoir Reinforcement plan
	DRAWN BY	MEDAIR Engineering Dep	APPROVED BY	Conner Wingerter	DRAWING NO.			VILLAGE	Anarjoy		

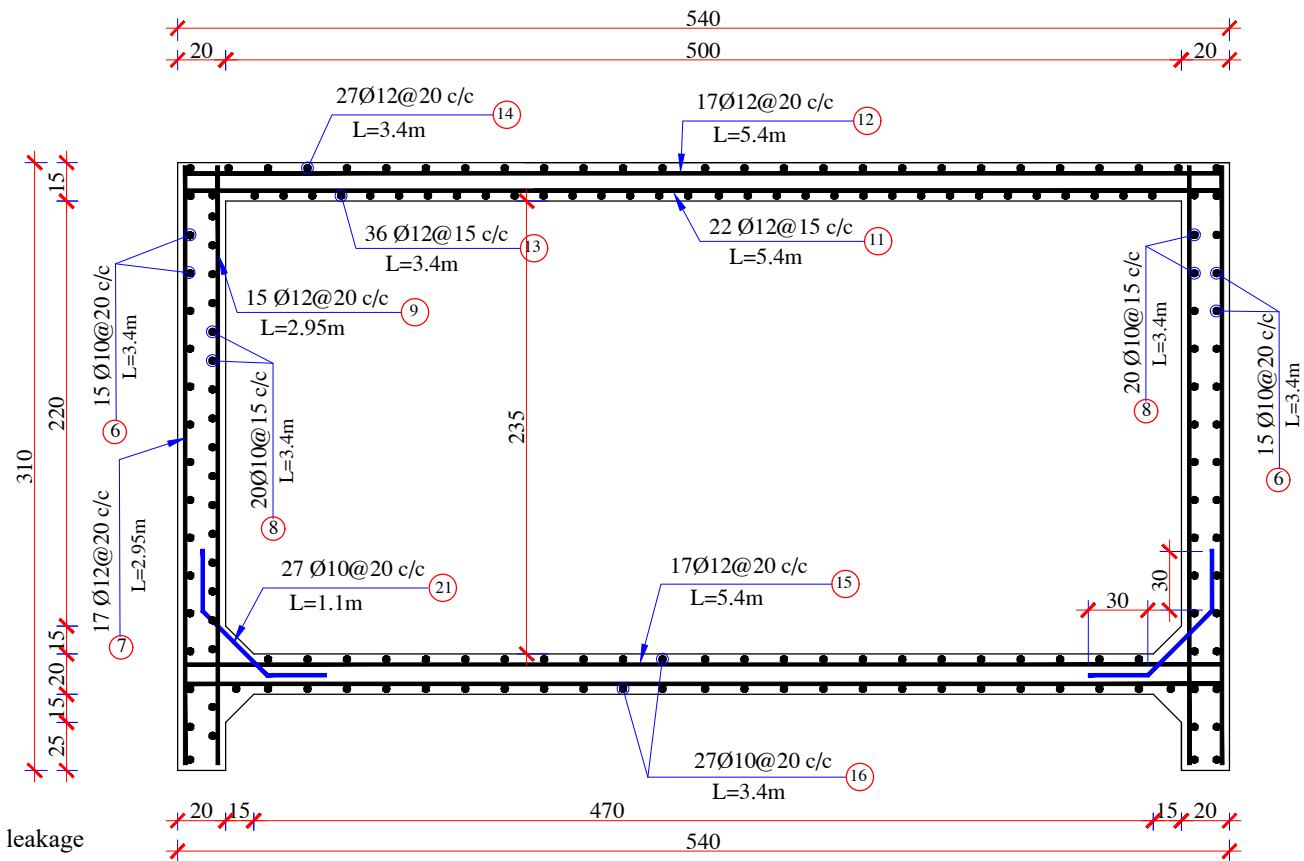


**SECTION C-C**

**STEEL BAR SCHEDULE FOR 30 CUBIC METER RCC WATER RESERVOIR**

Shape of bar	Bar No	Bar Dia (mm)	Number of Bar	Total Number	Length (m)	Total Leng (m)	Weight (kg/m)	Total weight (kg)	Total weight +5% (kg)
	1	10	4x6	24	1.2	28.8	0.6166	17.76	18.65
	2	10	4x7	28	1.2	33.6	0.6166	20.72	21.75
	3	16	2x36	72	2.95	212.4	1.579	335.38	352.15
	4	10	2x15	30	5.4	162	0.6166	99.89	104.88
	5	16	2x27	54	2.95	159.3	1.579	251.53	264.1
	6	10	2x15	30	3.4	102	0.6166	62.89	66.04
	7	12	2x17	34	2.95	100.3	0.888	89.06	93.52
	8	10	2x20	40	3.4	136	0.6166	83.85	88.05
	9	12	2x16	32	2.95	94.4	0.888	83.83	88.02
	10	16	58	58	2.2	127.6	1.579	201.48	211.55
	11	12	1x22	22	5.4	118.8	0.888	167.65	110.76
	12	12	1x17	17	5.4	91.8	0.888	81.5	85.59
	13	12	1x36	36	3.4	122.4	0.888	108.69	114.13
	14	12	1x17	17	3.4	57.8	0.888	51.33	53.89
	15	10	2x17	34	5.4	183.6	0.6166	113.2	118.87
	16	10	2x27	54	3.4	183.6	0.6166	113.2	118.87
	17	10	8	8	1.2	9.6	0.6166	5.91	6.22
	18	10	8	8	1.2	9.6	0.6166	5.91	6.22
	19	10	8	8	1.2	9.6	0.6166	5.91	6.22
	20	10	8	8	1.2	9.6	0.6166	5.91	6.22
	21	12	2x44	88	1.1	96.8	0.888	85.96	90.26
Total Weight Bar +5% (Kg)									2025.95 kg

Bar Dia (mm)	Total Length (m)	Weight (kg/m)	Total weight (kg)	Total weight +5% (kg)
10	868	0.6166	535.21	561.96
12	682.3	0.888	605.88	636.18
16	499.3	1.579	788.4	827.81



## SECTION D-D

### Note:

- 1- All dimensions are in cm unless otherwise stated.
- 2- During RCC work vibrator must be used to avoid water leakage from reservoir.
- 3- All PCC works should be with 1:2:4 mortar unless otherwise stated.
- 4- All RCC works should be with 1:1.5:3 mortar.
- 5- Isolation material is glass wool.
- 7- Curing must be continued upto 28 days.
- 8- Clear and Clean water must be used every where.
- 9- The inlet, outlet, overflow and washing pipes should be adjusted according to site condition.

<b>MEDAIR</b> WASH <b>MEDAIR</b>	SURVEYED BY	MEDAIR Engineering Dep	CHECKED BY	Eng Obaidullah Muneeb	SCALE	1:xx	SHEET NO. 7/7	PROVINCE	Urozgan	PROJECT NAME	30 Cubic meter RCC Water Reservoir-1
	DESIGNED BY	MEDAIR Engineering Dep	REVIEWED BY	Conner Wingerter	DATE	2023/11/23		DISTRICT	Dehrawud	DRAWING TITLE	Surface Reservoir Section D-D
	DRAWN BY	MEDAIR Engineering Dep	APPROVED BY	Conner Wingerter	DRAWING NO.			VILLAGE	Anarjoy		