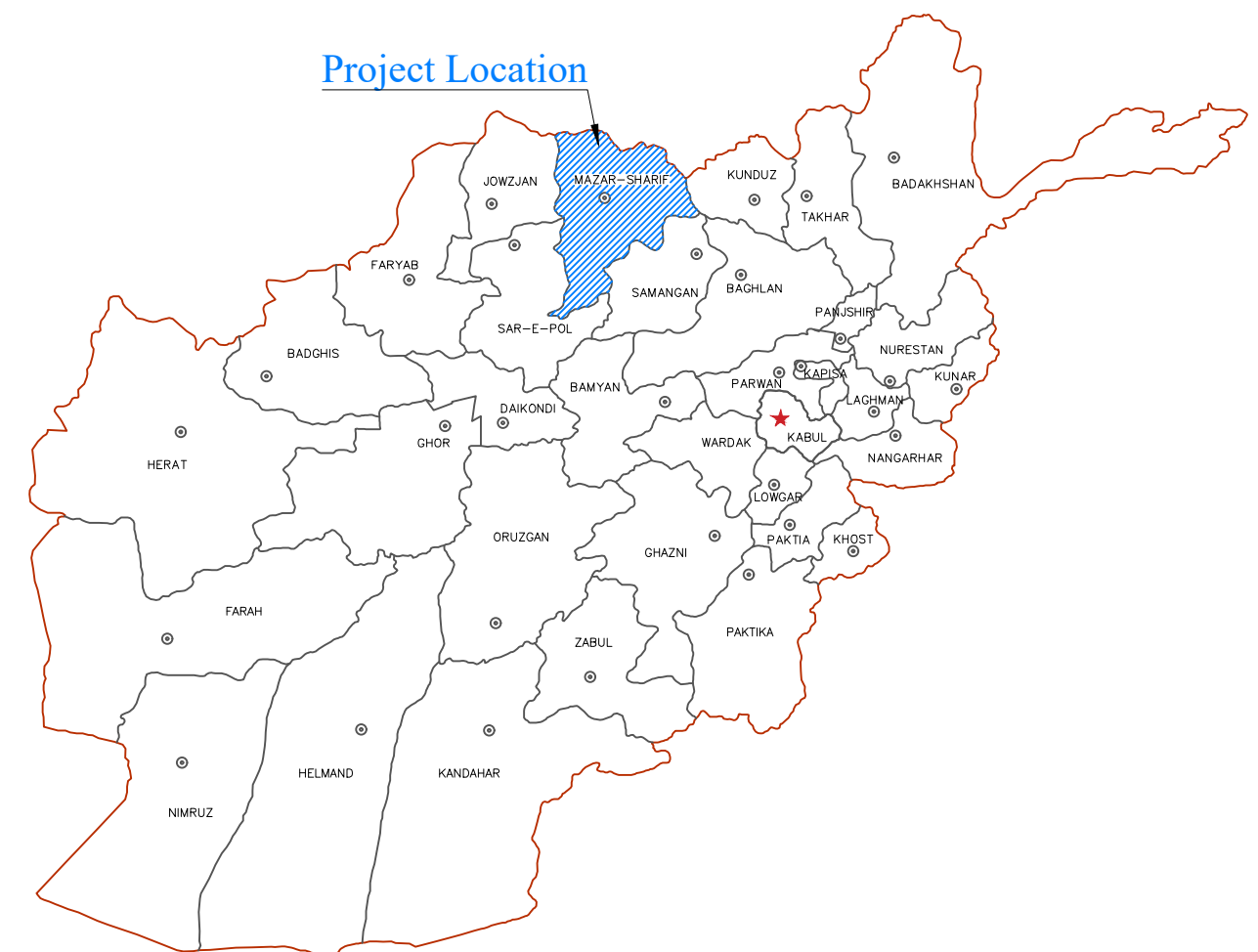




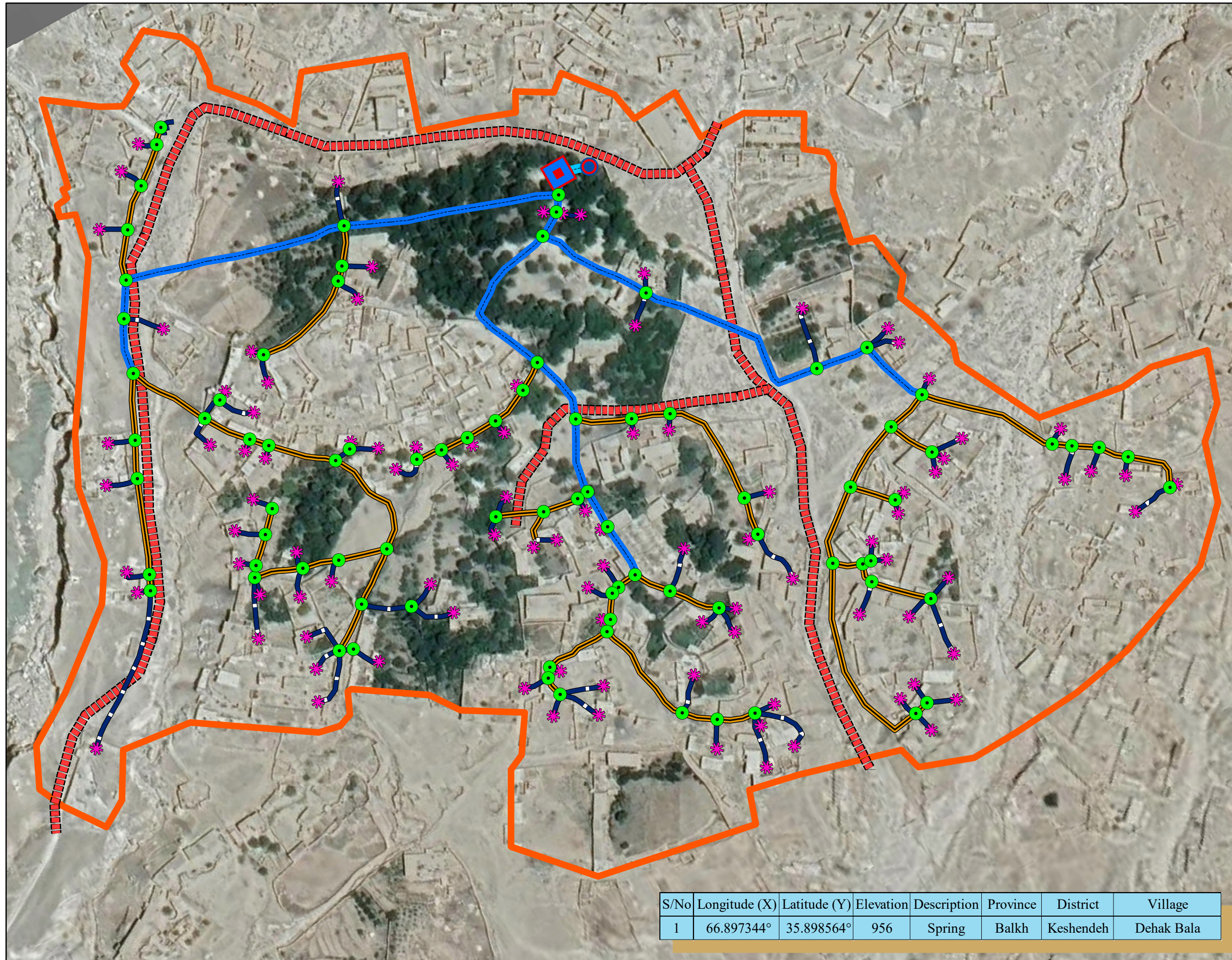
ORGANIZATION FOR AFGHAN WOMEN CAPACITY AND KNOWLEDGE (OAWCK)
SUSTAINABLE ACCESS TO CLEAN DRINKING WATER AND PROMOTION OF HYGIENE IN BALKH PROVINCE

ENGINEERING DRAWINGS

PROJECT NAME:	DEHAK BALA GRAVITY PIPE SCHEME
CONTRACT ID:	BALKH/KESHENDEH/P03
LENGTH :	SOURCE CONNECTION PIPE = 50m
	MAIN PIPE = 1873m
	SUB MAIN PIPE = 1992m
	DISTRIBUTION PIPE = 2285m
DISTRICT:	KESHENDEH
PROVINCE:	BALKH




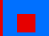








SUBMISSION DATE:	DEC- 2023
------------------	-----------



GIS Map Dehak Bala Gravity Pipe Scheme Network Balkh/Afghanistan

Legend

-  Stand Tap
-  Joint
-  Spring
-  Water Reservoir
-  Source Connection Pipe
-  Main Pipe
-  Sub Main Pipe
-  Distribution Pipe
-  Access Road
-  Boundary



MAP INFORMATION

Map Produced : Dec 2023
 Cartography: OAWCK/AHF
 Projection : Transverse Mercator
 Datum : WGS 1984

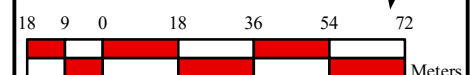
DATA SOURCE

Represent actual Location.
 Base topographic information such as boundaries, roads, and place names courtesy of AGCHO, Pipe Scheme location and some others information about the land is from OAWCK Organization field survey

Map prepared at the
 Organization for Afghan Women Capacity and Knowledge (OAWCK) GIS unit

Scale:

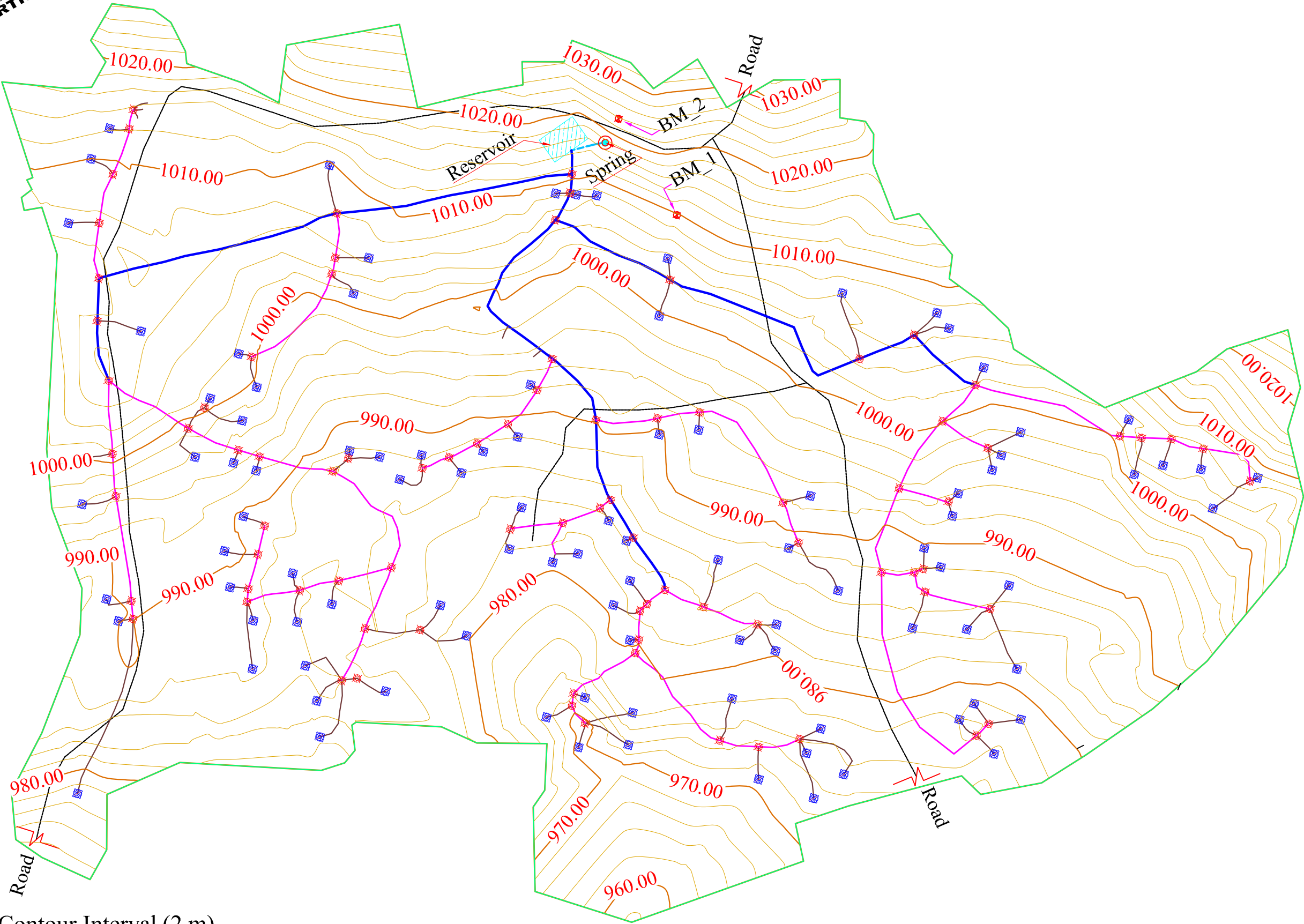
1:1,800
 1 cm = 18 m



S/No	Longitude (X)	Latitude (Y)	Elevation	Description	Province	District	Village
1	66.897344°	35.898564°	956	Spring	Balkh	Keshendeh	Dehak Bala



Contour Map of Dehak Bala Gravity Pipe Scheme Network



Note:
Minor Contour Interval (2 m)
Major Contour Interval (10 m)



Drawn Scale=1:1800
1cm=18m (A3 Paper)

Dehak Bala BM's Tabale				
Point #	Northing	Easting	Elevation	Description
1150	3974696.06	310247.36	1009.74	BM_1
1157	3974746.06	310247.36	1023.79	BM_2

Legend

Water Tap		Bench Marks	
Joint		Source Connection Pipe	
Main Pipe		Sub Main	
Distribution Pipe		Reservoir	
Water Well		Boundary	
Major Contour		Minor Contour	

Survey & Design By: OAWCK Organization

ORGANIZATION:
Organization for Afghan Women Capacity and Knowledge

Sub - Project :
Dehak Bala Gravity Pipe Scheme

Drawing :
Contour Map of Dehak Bala Gravity Pipe Scheme Network

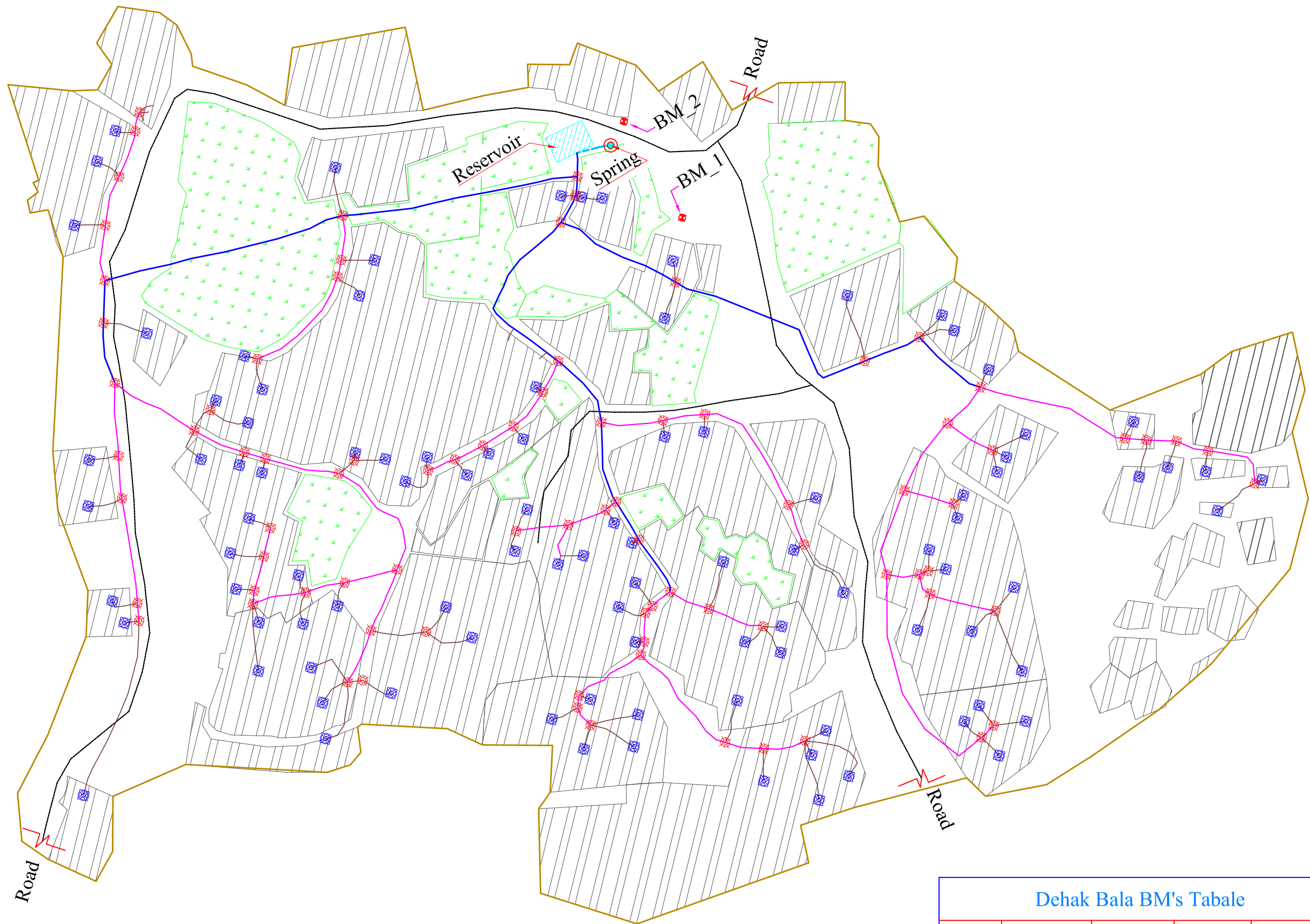
Activity	Name	Signature	Date
Surveyed & Drawn by:	Abdul Baseer		
Design by:	Abdul Waris		
Checked by:	Abdul Waris		
Cross Reviewed by:	Rahmatullah Shakir		

Project Location:
Dehak Bala Village, Keshendeh District, Balkh Province, Afghanistan

Sheet No: 03

Date: Dec/2023

Site Plan of Dehak Bala Gravity Pipe Scheme Network



Drawn Scale=1:1800
1cm=18m (A3 Paper)

Legend

Water Tap		Bench Marks	
Joint		Source Connection Pipe	
Main Pipe		Sub Main Pipe	
Distribution Pipe		Road	
Water Well		Reservoir	
Village		Agriculture Land	
Boundary			

Survey & Design By: OAWCK Organization



ORGANIZATION:
Organization for Afghan Women Capacity and Knowledge

Sub - Project :
Dehak Bala Gravity Pipe Scheme

Drawing :
Site Plan of Dehak Bala Gravity Scheme Network

Activity	Name	Signature	Date
Surveyed & Drawn by:	Abdul Baseer		
Design by:	Abdul Waris		
Checked by:	Abdul Waris		
Cross Reviewed by:	Rahmatullah Shakir		

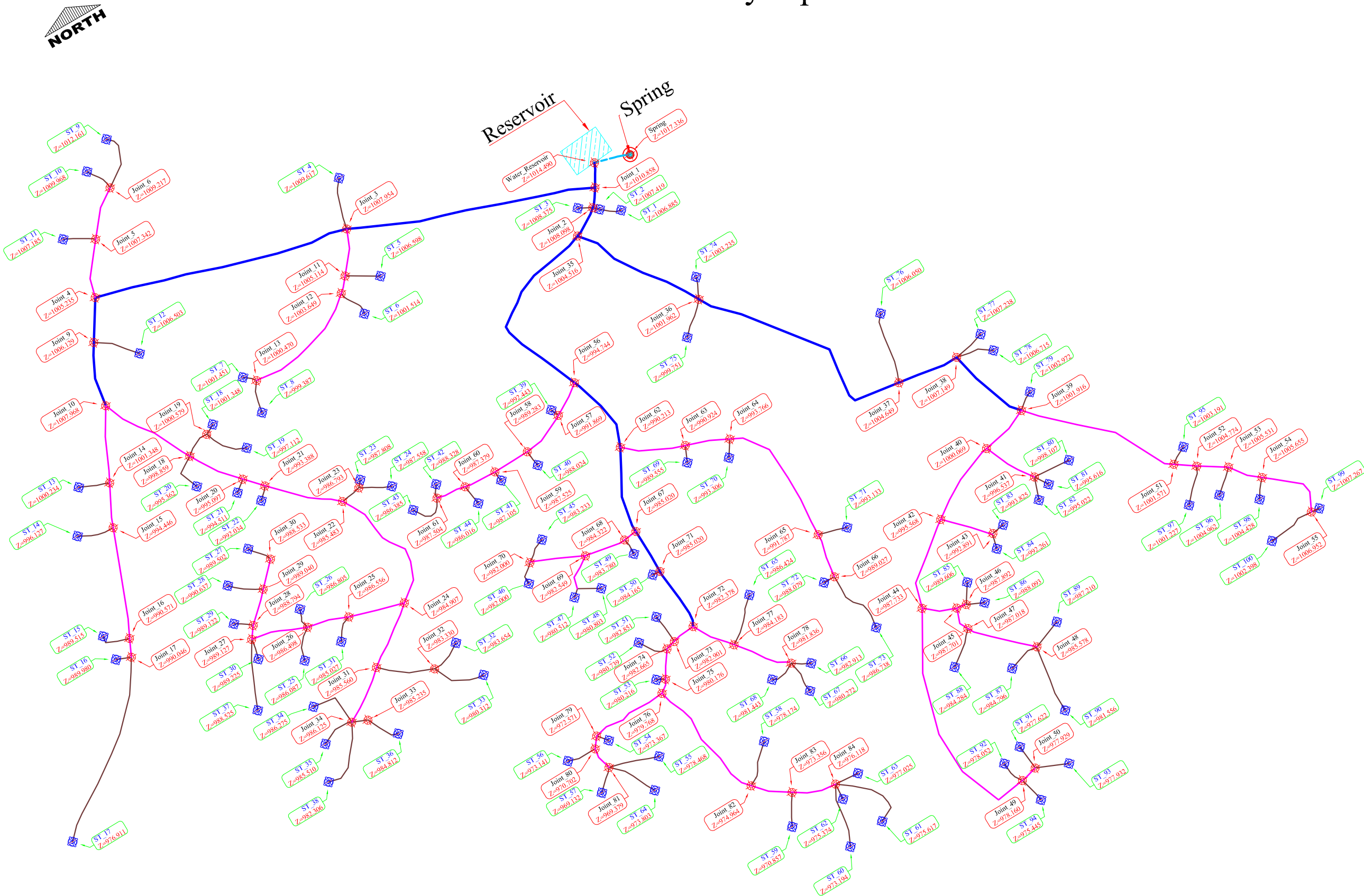
Project Location:
Dehak Bala Village, Keshendeh District, Balkh Province, Afghanistan

Sheet No: 02 Date: Dec/2023

Dehak Bala BM's Tabale

Point #	Northing	Easting	Elevation	Description
1150	3974696.06	310247.36	1009.74	BM_1
1157	3974746.06	310247.36	1023.79	BM_2

Structure Plan of Dehak Bala Gravity Pipe Scheme Network



Legend			
Water Tap		Joint	
Source Connection Pipe		Main Pipe	
Sub Main Pipe		Distribution Pipe	
Reservoir		Water Well	

Abbreviations:
ST = Stand Tap

Survey & Design By: OAWCK Organization



ORGANIZATION:
Organization for Afghan Women Capacity and Knowledge

Sub - Project :
Dehak Bala Gravity Pipe Scheme

Drawing :
Structure Plan of Dehak Bala Gravity Pipe Scheme Network

Activity	Name	Signature	Date
Surveyed & Drawn by:	Abdul Baseer		
Design by:	Abdul Waris		
Checked by:	Abdul Waris		
Cross Reviewed by:	Rahmatullah Shakir		

Project Location:
Dehak Bala Village, Keshendeh District, Balkh Province, Afghanistan

Sheet No: 04 Date: Dec/2023

Drawn Scale=1:1800
1cm=18m (A3 Paper)