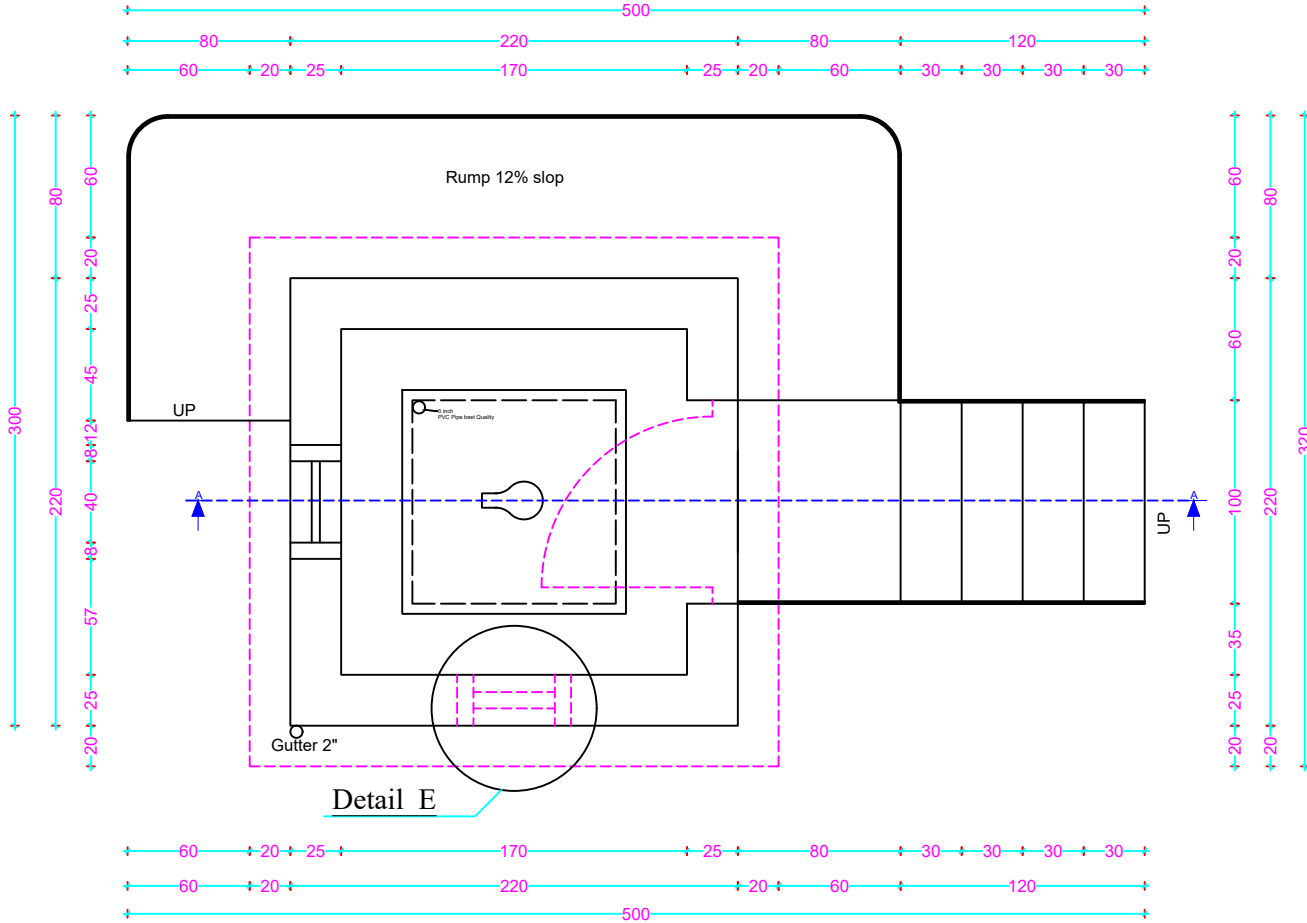
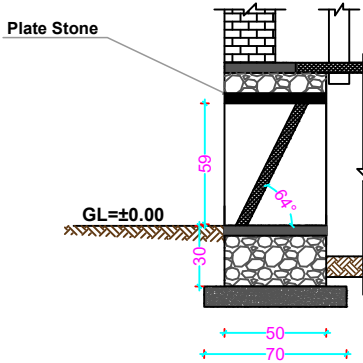


PLAN OF DRY VAULT LATRINE



Detail E

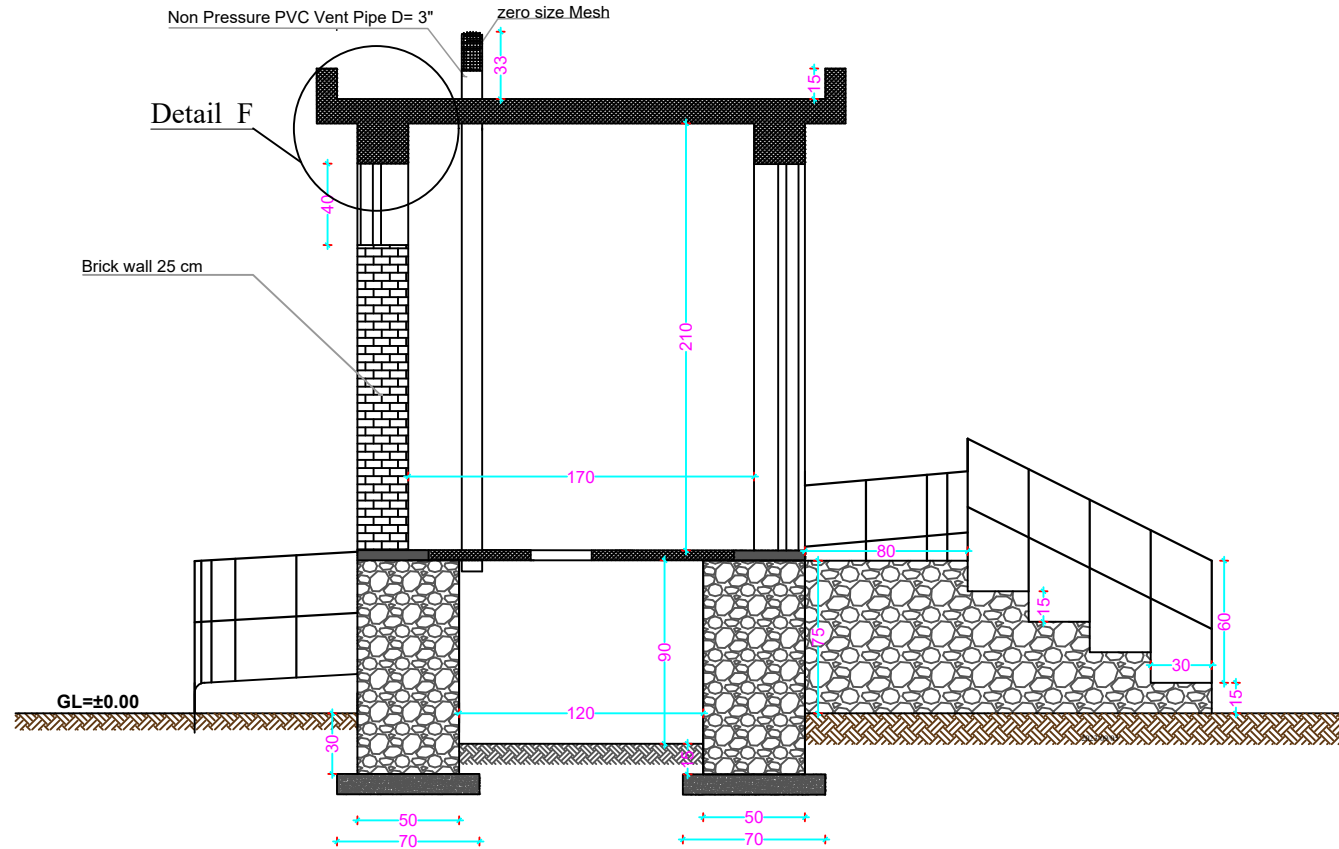


No	Surveyed by :	OAWCK Engineering Team	
1	Designed by:	OAWCK Engineering Team	
2	Drawn by:	OAWCK Engineering Team	
3	Approved by:	Haji M.Zaman Safi	

Organization for Afghan Woman Capacity
and Knowledge
(OAWCK)

Scale:		Province:	Balkh	Project name: AHF/WASH Project
Date:		Districts:	Kushandi & Zari	
Drawing No:		Village	Concern Villages as per Contract	Drawing Title: Dry Latrine

SECTION A-A

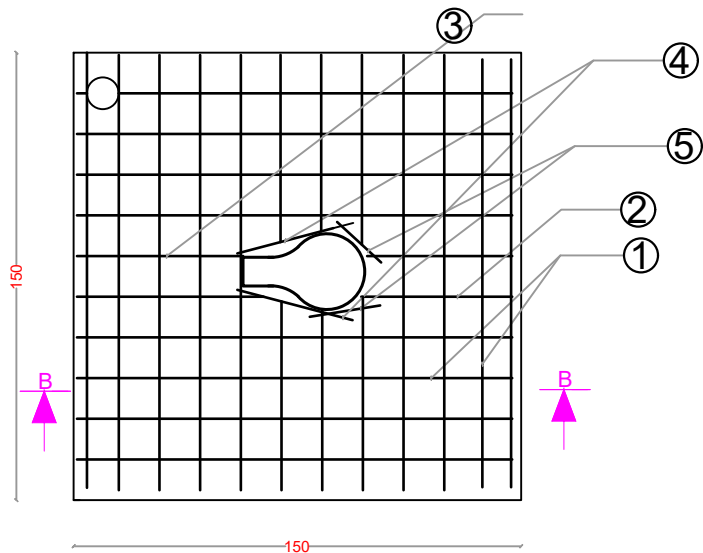


No	Surveyed by :	OAWCK Engineering Team	
1	Designed by:	OAWCK Engineering Team	
2	Drawn by:	OAWCK Engineering Team	
3	Approved by:	Haji M.Zaman Safi	

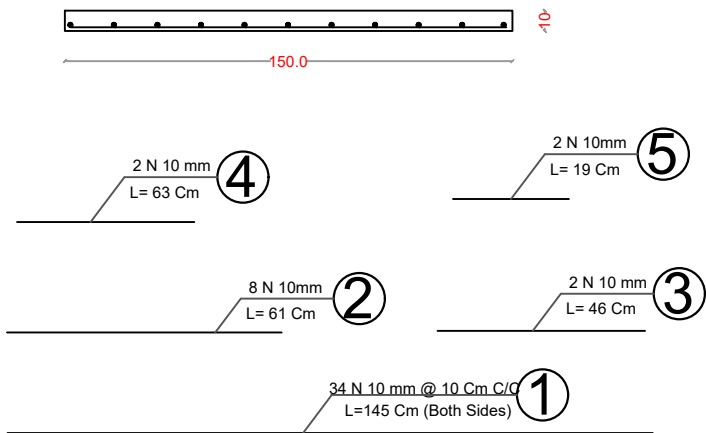
Organization for Afghan Woman Capacity
and Knowledge
(OAWCK)

Scale:		Province:	Balkh	Project name: AHF/WASH Project
Date:		Districts:	Kushandi & Zari	
Drawing No:		Village:	Concern Villages as per Contract	Drawing Title: Dry Latrine

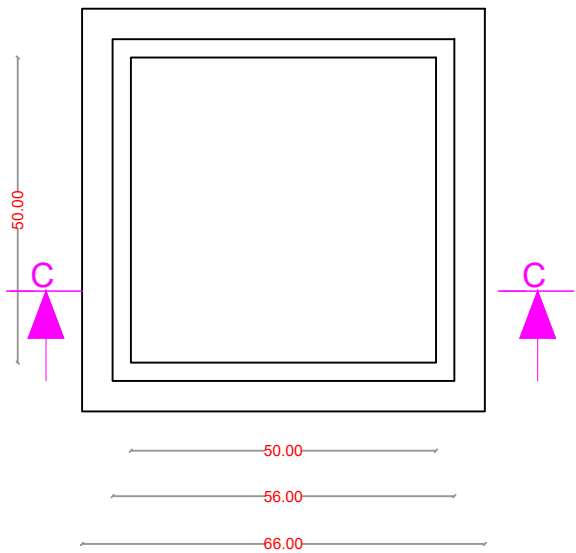
SLAB REINFORCEMENT DETAILS



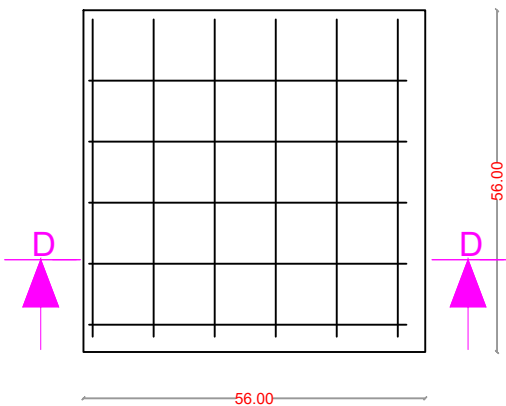
SECTION B-B



MANHOLE FRAME & COVER SLAB PLAN

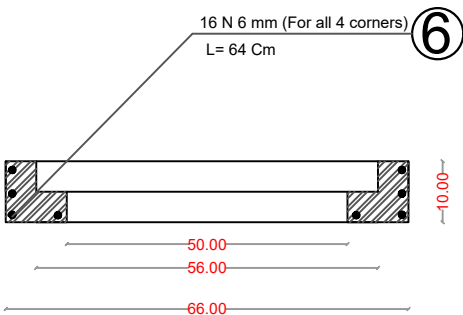


COVER SLAB REINFORCEMENT DETAILS

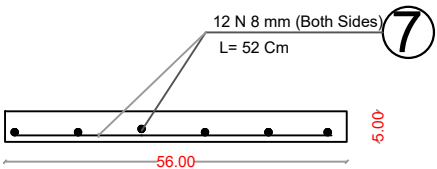


MANHOLE CONCRETE FRAME

SECTION C-C



SECTION D-D

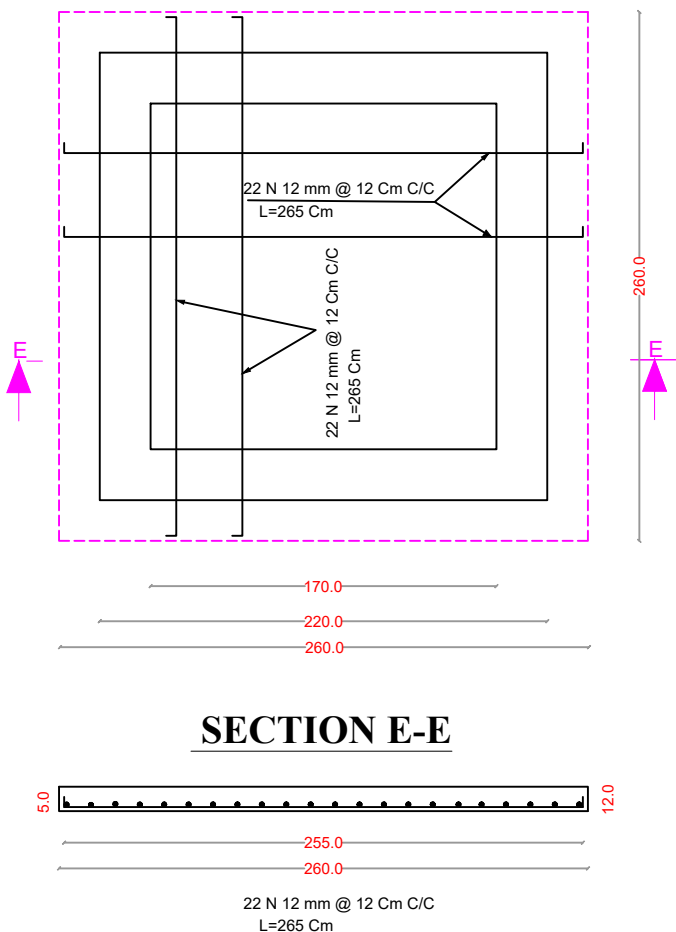


No	Surveyed by :	OAWCK Engineering Team
1	Designed by:	OAWCK Engineering Team
2	Drawn by:	OAWCK Engineering Team
3	Approved by:	Haji M.Zaman Safi

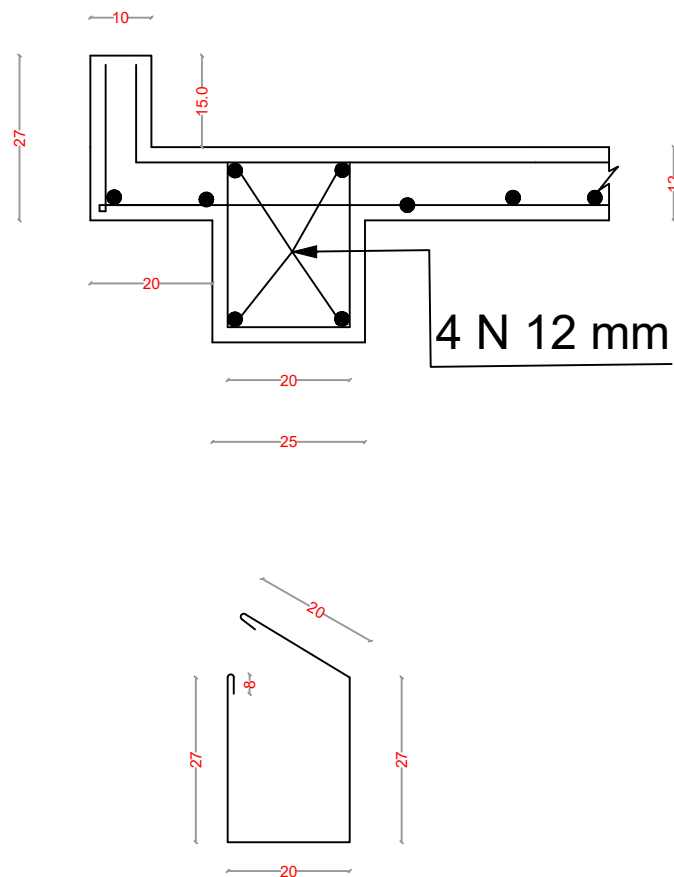
Organization for Afghan Woman Capacity
and Knowledge
(OAWCK)

Scale:		Province:	Balkh	Project name:	AHF/WASH Project
Date:		Districts:	Kushandi & Zari		
Drawing No:		Village	Concern Villages as per Contract	Drawing Title:	Dry Latrine

Plan of Slab



Detail F-F M 1:25



Note:

- 1: all Damnation by Centimeter
- 2: Brick: Shall be obtained from an approved source and of uniform color, size (7*11*22) cm, and shape. Bricks shall have smooth rectangular faces with sharp straight, right-angle edges. Maximum absorption shall not be more than 20% of its dry weight on immersion in water for 24 hours. Minimum crushing strength shall be 75 kg/cm²ma .
- 3: Reinforcement:: Steel reinforcement (Tashkent or khan Steel) Shall be the correct diameter ,as shown on the Drawings
- 4: Mark of concrete/mortar for stone masonry M-120
- 5: Installation of metallic trap door (45cm X 45cm) in the vault for empty excreta from latrine
- 6: Installation 4" PVC normal type black color pipe for ventilation
- 7: Installation urine 2" GL pipe
- 8: Metallic door (190*90) cm Gage2mm or Made from kantenar or best gouality of Wooden .
- 9: *Gravel* : The gravel used for every concrete part must be crashed, cleaned and have10 to 25 mm diameter.
- 10: PCC for covering the floor for seating place (thick 10cm).
- 11: Mark of PCC concrete is (M-150).
- 12: Paint tow layer Weather Sheet 100% according to the OAWCK Engineer Advice



No	Surveyed by :	OAWCK Engineering Team
1	Designed by:	OAWCK Engineering Team
2	Drawn by:	OAWCK Engineering Team
3	Approved by:	Haji M.Zaman Safi

Organization for Afghan Woman Capacity
and Knowledge
(OAWCK)

Scale:		Province:	Balkh	Project name: AHF/WASH Project
Date:		Districts:	Kushandi & Zari	
Drawing No:		Villages	Concern Villages as per Contract	Drawing Title: Dry Latrine